

INDEX OF SHEETS

| SHEET | DESCRIPTION |
|-------|---|
| 1 | COVER SHEET, INDEX OF SHEETS, STANDARDS |
| 2 | GENERAL NOTES, SIGNATURES |
| 3 | SUMMARY OF QUANTITIES |
| 4 | BITUMINOUS MIX DESIGN, PAVEMENT MARKING |
| 5 | 039-0036 DETOUR SIGNING |
| 6 | 039-0036 PLAN AND ELEVATION |
| 7-8 | 039-0036 BEAM DETAILS |
| 9 | 039-0009 PLAN AND ELEVATION, REPAIR DETAILS |
| 10 | 039-0009 REPAIR DETAILS |

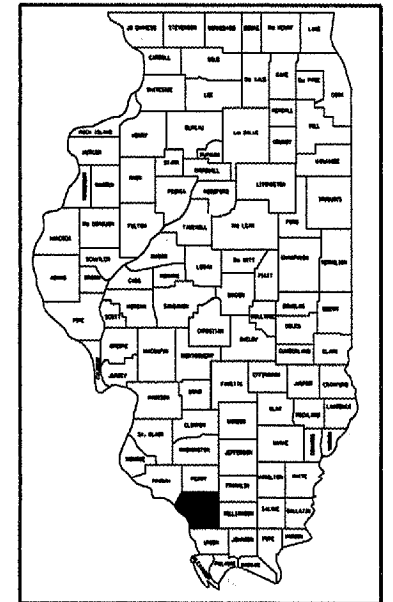
**STATE OF ILLINOIS
DEPARTMENT OF TRANSPORTATION
DIVISION OF HIGHWAYS**

**PROPOSED
HIGHWAY PLANS
DISTRICT NINE**

**FAU ROUTE 9669 (IL 127)
FAP ROUTE 42 (IL 13 & 127)
SECTION 131-1, (12-2)1-1
C-99-016-08
JACKSON COUNTY**

| ROUTE NO. | SECTION | COUNTY | TOTAL SHEETS | SHEET NO. |
|--------------------|---------|---------|--------------|-----------|
| FAP 42 FAU 9669 | | JACKSON | 10 | 1 |

131-1, (12-2)1-1
CONTRACT NO. 78036

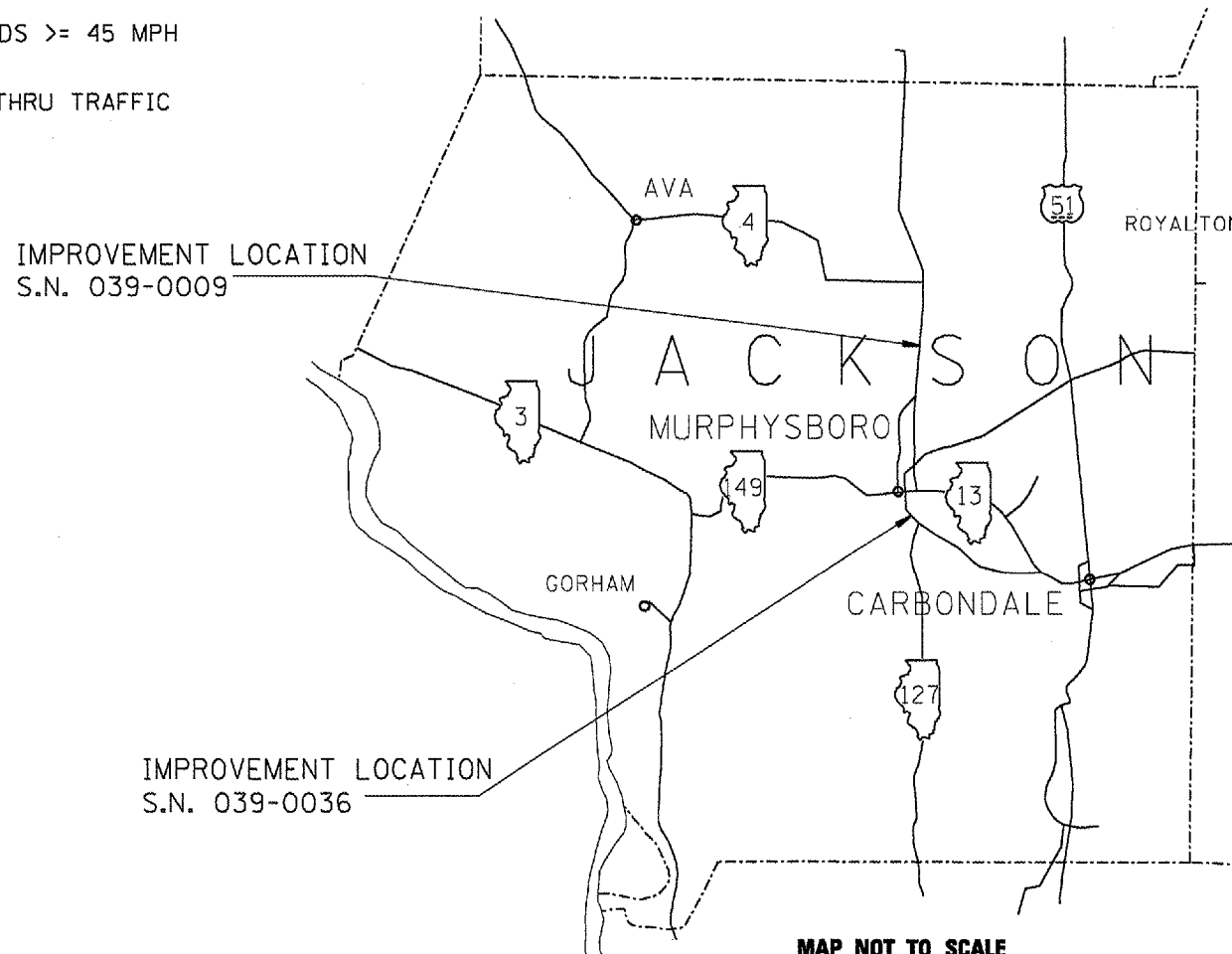


STANDARDS

- 701201-02 LANE CLOSURE, 2L, 2W, DAY ONLY, FOR SPEEDS >= 45 MPH
- 701901 TRAFFIC CONTROL DEVICES
- B.L.R. 22-5 2L, 2W, RURAL TRAFFIC - ROAD CLOSED TO THRU TRAFFIC

SN: 039-0036
MURPHYSBORO TOWNSHIP
2005 ADT = 7000
INVENTORY RATING HS 16.9
OPERATING RATING HS 27.9

SN: 039-0009
SOMERSET TOWNSHIP
2005 ADT = 4800
INVENTORY RATING HS 11.7
OPERATING RATING HS 18.5



MAP NOT TO SCALE

PLAN DRAWINGS ARE NOT TO SCALE.

**J.U.L.I.E.
JOINT UTILITY LOCATION INFORMATION FOR EXCAVATION
1-800-892-0123**

CONTRACT NO. 78036

**STATE OF ILLINOIS
DEPARTMENT OF TRANSPORTATION
DIVISION OF HIGHWAYS**

SUBMITTED *Dec 07* 20
May 08
DEPUTY DIRECTOR OF HIGHWAYS, REGION ENGINEER

February 1, 20 08
Eric E. Hamm
ENGINEER OF DESIGN AND ENVIRONMENT

February 1, 20 08
Christine M. Reed
DIRECTOR OF HIGHWAYS, CHIEF ENGINEER

**PRINTED BY THE AUTHORITY
OF THE STATE OF ILLINOIS**

PROJECT ENGINEER: CASEY N. TECKENBROCK PHONE: (618) 549-2171
SQUAD LEADER: RITA GAUTNEY CENTREX: 782-4554

STATE OF ILLINOIS
DEPARTMENT OF TRANSPORTATION

| ROUTE NO. | DISTRICT | COUNTY | TOTAL SHEETS | SHEET NO. |
|-----------------------|----------|-------------------|--------------|-----------|
| FAP 42 FAU 9669 | • | JACKSON | 10 | 2 |
| FED. ROAD DIST. NO. 7 | ILLINOIS | FED. AID PROJECT: | | |

•131-1, (12-2)1-1
CONTRACT NO. 78036

GENERAL NOTES

THE THICKNESS OF HOT-MIX ASPHALT MIXTURE SHOWN ON THE PLANS IS THE NOMINAL THICKNESS. DEVIATIONS FROM THE NOMINAL THICKNESS WILL BE PERMITTED WHEN SUCH DEVIATIONS OCCUR DUE TO IRREGULARITIES IN THE EXISTING SURFACE OR BASE ON WHICH THE HOT-MIX ASPHALT MIXTURE IS PLACED.

THE DIMENSIONS BETWEEN SIGNS MAY BE MODIFIED SLIGHTLY SO AS TO AVOID CONFLICTS WITH EXISTING SIDEROADS, COMMERCIAL ENTRANCES, AND PRIVATE ENTRANCES. THE BUREAU OF OPERATIONS SHOULD APPROVE FINAL PLACEMENT OF TRAFFIC CONTROL SIGNING.

FACTORS USED FOR ESTIMATING PLAN QUANTITIES ARE AS FOLLOWS AND SHALL NOT BE USED FOR THE BASIS OF FINAL QUANTITIES:

ALL HOT-MIX ASPHALT 2.016 TONS/CU. YD.

The cost of detour signing is included in the cost of Traffic Control and Protection Standard BLR 22, and will not be paid for separately.

Prepared By: Kevin Hammer
DISTRICT OPERATIONS ENGINEER

Examined By: Samuel Danton
ASSISTANT REGIONAL ENGINEER

Examined By: James Travis Emery
DISTRICT LAND ACQUISITION ENGINEER

Examined By: Carrie Nelson
DISTRICT PROGRAM DEVELOPMENT ENGINEER

Examined By: Joe Blankiewicz
DISTRICT STUDIES & PLANS ENGINEER

Examined By: Joseph Linn
DISTRICT CONSTRUCTION ENGINEER

Examined By: Bruce R. Poulos
DISTRICT MATERIALS ENGINEER

Examined By: J. Smother
DISTRICT PROJECT IMPLEMENTATION ENGINEER

Approved By: Max Ramis
DEPUTY DIRECTOR OF HIGHWAYS,
REGION 5 ENGINEER

DATE Dec 6 20 07

STATE OF ILLINOIS
DEPARTMENT OF TRANSPORTATION

| | | | | |
|-----------------------|---------|------------------|--------------|-----------|
| ROUTE NO. | SECTION | COUNTY | TOTAL SHEETS | SHEET NO. |
| FAP 42 FAU 9669 | | JACKSON | 10 | 3 |
| FED. ROAD DIST. NO. 7 | SLIPNO. | FED. AID PROJECT | | |

*131-1, (12-2)-1
CONTRACT NO. 78036

SUMMARY OF QUANTITIES

| 100% STATE CODE NO. | SFTY-2A ITEM DESCRIPTION | UNIT | TOTAL QUANTITY | FAP 42 QUANTITY | |
|------------------------|---|--------|-------------------|--------------------|-------------------|
| | | | | RURAL 039-0009 | URBAN 039-0036 |
| 40603345 | HOT-MIX ASPHALT SURFACE COURSE, MIX "D", N90 | TON | 4.2 | | 4.2 |
| 44001005 | HOT-MIX ASPHALT SURFACE REMOVAL | SQ YD | 11.3 | | 11.3 |
| 50102400 | CONCRETE REMOVAL | CU YD | 3.7 | | 3.7 |
| 50300255 | CONCRETE SUPERSTRUCTURE | CU YD | 3.9 | | 3.9 |
| 50400305 | PRECAST PRESTRESSED CONCRETE DECK BEAMS (17" DEPTH) | SQ FT | 354 | | 354 |
| 50500405 | FURNISHING AND ERECTING STRUCTURAL STEEL | POUND | 19920 | 19600 | 320 |
| 50800205 | REINFORCEMENT BARS, EPOXY COATED | POUND | 190 | | 190 |
| X0325806 | WATERPROOFING MEMBRANE SYSTEM | SQ FT | 392.8 | | 392.8 |
| 58300100 | PORTLAND CEMENT MORTAR FAIRING COURSE | FOOT | 202.3 | | 202.3 |
| 67000400 | ENGINEER'S FIELD OFFICE, TYPE A | CAL MO | 4 | 2 | 2 |
| 67100100 | MOBILIZATION | L SUM | 1 | 0.5 | 0.5 |
| 70101835 | TRAFFIC CONTROL AND PROTECTION, STANDARD BLR 22 | L SUM | 1 | | 1 |
| 70100450 | TRAFFIC CONTROL AND PROTECTION, STANDARD 701201 | L SUM | 1 | 1 | |
| 70106800 | CHANGEABLE MESSAGE SIGN | CAL MO | 3 | 1 | 2 |
| X0323076 | SILICONE JOINT SEALER, 1 3/4" | FOOT | 117 | | 117 |
| X0320047 | REMOVAL OF EXISTING PRECAST PRESTRESSED CONCRETE DECK BEAMS | SQ FT | 364 | | 364 |

Rev.

STATE OF ILLINOIS
DEPARTMENT OF TRANSPORTATION

| ROUTE NO. | SECTION | COUNTY | TOTAL SHEETS | SHEET NO. |
|-----------------------|---------|----------|-------------------|-----------|
| FAP 42 FAU 9669 | • | JACKSON | 10 | 4 |
| FED. ROAD DIST. NO. 7 | | ILLINOIS | FED. AID PROJECT: | |

*131-1, (12-2)1-1
CONTRACT NO. 78036

039-0036
BITUMINOUS MIX DESIGN

| | |
|---|--|
| LOCATION: | HOT-MIX ASPHALT SURFACE COURSE |
| MIXTURE USE(S): | HOT-MIX ASPHALT SURFACE COURSE, MIX D, N90 |
| AC/PG: | PG64-22 |
| RAP % (MAX): | 10 |
| DESIGN AIR VOIDS: | 4.0%, 90 GYRATION DESIGN |
| MIXTURE COMPOSITION: (GRADATION MIXTURE) | IL - 9.5 mm OR IL 12.5 mm |
| FRICTION AGGREGATE: | D SURFACE |

STATE OF ILLINOIS
DEPARTMENT OF TRANSPORTATION

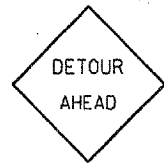
| ROUTE NO. | SECTION | COUNTY | TOTAL SHEETS | SHEET NO. |
|------------------------|---------|----------|--------------------|-----------|
| FAP 42 FAU 9669 | | JACKSON | 10 | 5 |
| PROJ. ROAD DIST. NO. Y | | ILLINOIS | PROJ. ROAD PROJECT | |

*13I-1, (112-211-1)
CONTRACT NO. 78036

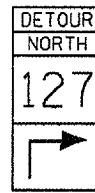
SIGN
DESIGNATION SIGN

SIGN
DESIGNATION SIGN

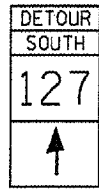
A



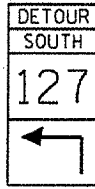
CC



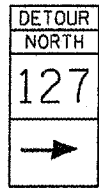
B



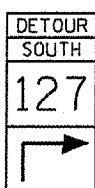
EE



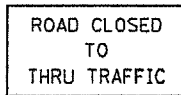
C



FF



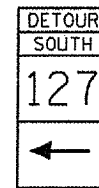
D



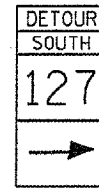
GG



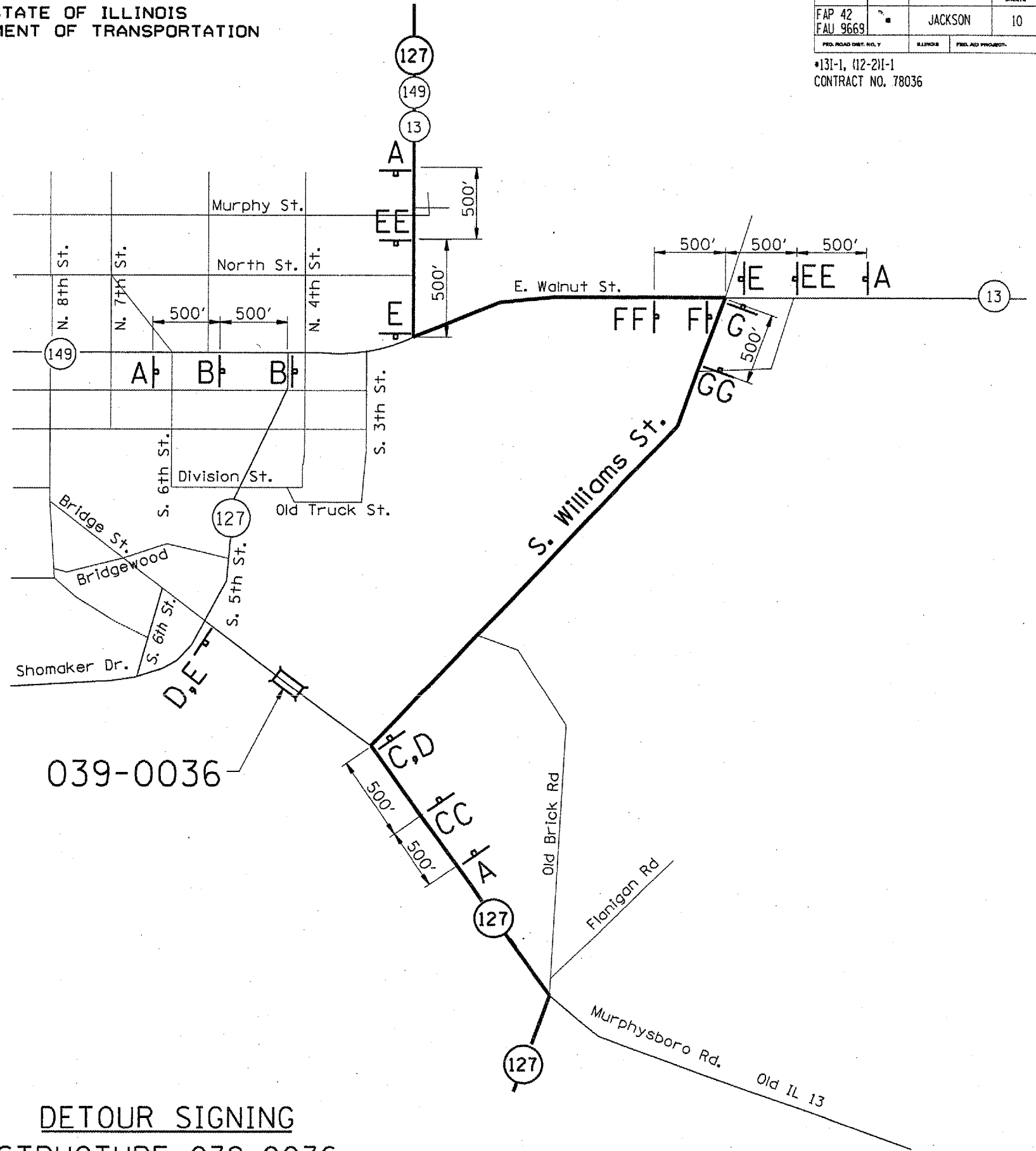
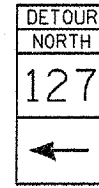
E



F



G



DETOUR SIGNING
STRUCTURE 039-0036

STATE OF ILLINOIS
DEPARTMENT OF TRANSPORTATION

| | | | | |
|-----------------------|---------|----------|------------------|-----------|
| ROUTE NO. | SECTION | COUNTY | SHEET | SHEET NO. |
| | | Jackson | 10 | 6 |
| FED. ROAD DIST. NO. 7 | | ILLINOIS | FED. AID PROJECT | |

3 SHEETS

Contract Number: 78036

GENERAL NOTES

The cut strands at each beam end shall be given two coats of zinc dust spray or paint meeting the requirements of ASTM A780. The zinc dust spray or paint shall be applied before corrosion appears and allowed to dry according to manufacturer's specifications prior to another coat of zinc. A concrete sealer meeting the requirements of Section 587 of the Standard Specifications shall be applied to the exterior face and 9" in on the underside of each fascia beam. The sealer shall be applied after visible crack growth has subsided. This work shall be performed by the producer and included with the cost of the beam.

The contractor is advised that the existing PPC Deck Beams are in a deteriorated condition with reduced load carrying capacity. It is the contractor's responsibility to account for the condition of the beams when developing construction procedures.

Any damage done to the bridge during beam removal shall be repaired by the Contractor. Cost to be included in the cost of Removal of Existing PPC Deck Beams.

The top surface of the beams shall be finished according to the IDOT Manual for Fabrication of Precast Prestressed Concrete Products.

Plan dimensions and details relative to existing plans are subject to routine variations. The Contractor shall field verify existing dimensions and details affecting new construction and make necessary approved adjustments prior to construction or ordering of materials. Such variations shall not be cause for additional compensation for a change in scope of the work, however, the Contractor will be paid for the quantity actually furnished based upon the unit price bid for the work.

All structural steel shall be shop painted with the inorganic zinc rich primer per AASHTO M300, Type 1. Cost included with Furnishing and Erecting Structural Steel.

Existing reinforcement bars extending into the removal area shall be cleaned, straightened and incorporated into the new construction. Any reinforcement bars that are damaged during concrete removal shall be replaced with an approved bar splicer or anchorage system. Cost included with Concrete Removal.

If the contractor's procedure for existing beam removal or placement of new beams involves placement of cranes or other heavy equipment on the bridge, a detailed procedure shall be submitted to the Engineer for approval. The procedure shall include calculations, prepared and sealed by an Illinois Licensed Structural Engineer, verifying that the equipment and procedure used will not overstress the new or existing beams. To distribute load to multiple beams and protect the existing surface, in all cases a double layer mat of heavy timbers shall be used at all times under crane tracks or wheels and any outriggers in the down position. If necessary, shims shall be used under the crane mat to ensure uniform contact with the underlying beams. If heavy equipment will be placed on new PPC deck beams, the following shall be done prior to placement of the timber mats: placement and tightening of transverse tie assemblies, grouting and curing the dowel rods 24 hours minimum and grouting and curing the shear keys.

Reinforcement bars shall conform to the requirements of ASTM A 706 Gr 60 (IL Modified). See Special Provisions.

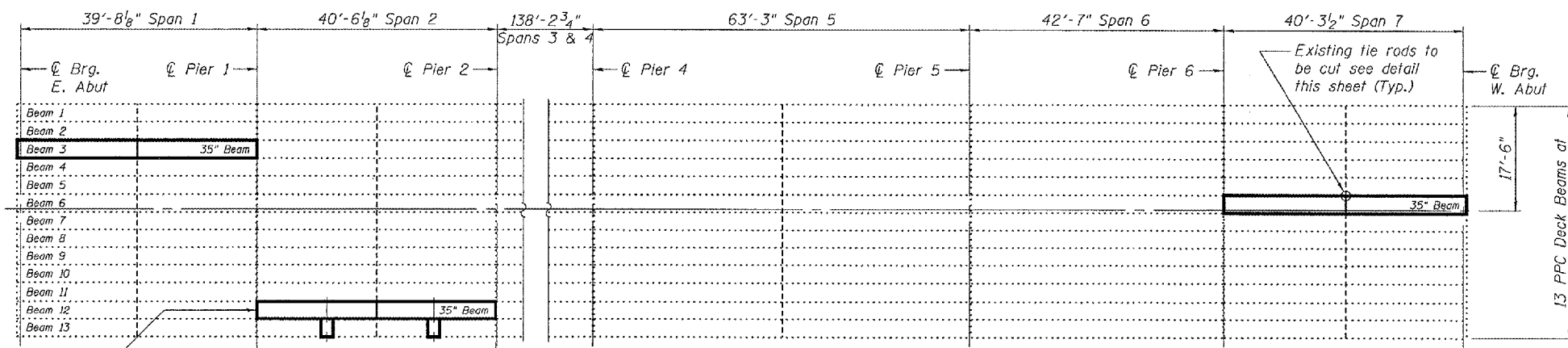
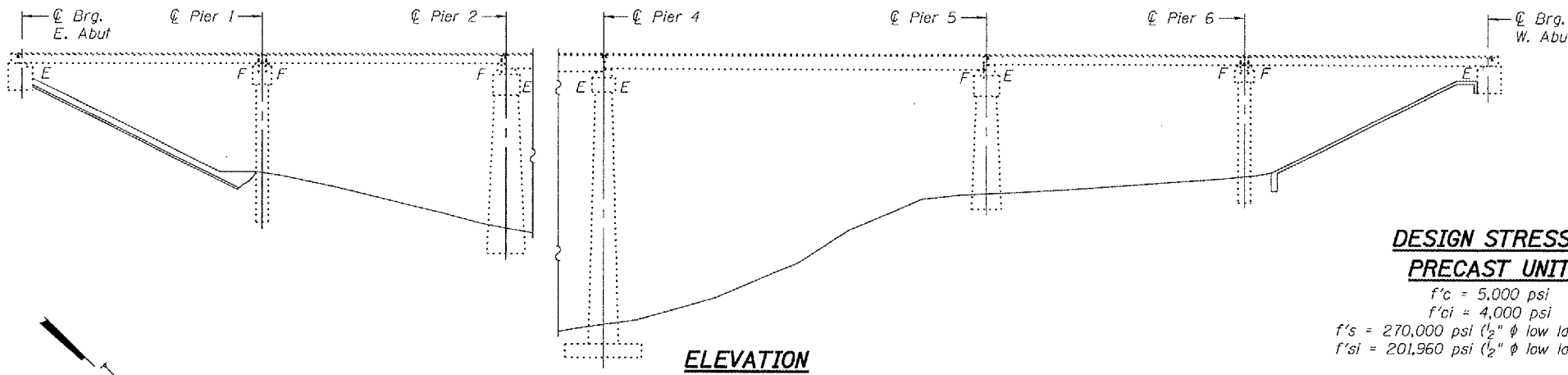
Reinforcement bars designated (E) shall be epoxy coated.

TOTAL BILL OF MATERIAL

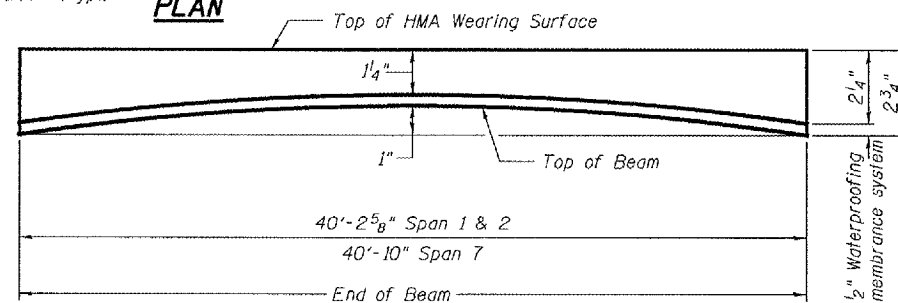
| ITEM | UNIT | QUANTITY |
|---|---------|----------|
| Removal of Existing PPC Deck Beams | Sq. Ft. | 364 |
| Concrete Removal | Cu. Yd. | 3.7 |
| Hot Mix Asphalt Surface Removal | Sq. Yd. | 11.3 |
| PPC Deck Beams 17" Depth | Sq. Ft. | 354 |
| Concrete Superstructure | Cu. Ft. | 3.9 |
| Hotmix Asphalt Surface Course Mix "D" N90 | Ton | 4.2 |
| Waterproofing Membrane System | Sq. Ft. | 392.8 |
| PC Mortar Fairing Course | Foot | 202.3 |
| Furnishing and Erecting Structural Steel | Pound | 320 |
| Reinforcement Bars, Epoxy Coated | Pound | 190 |
| Silicone Joint Sealer, 1 1/4" | Foot | 117 |

**DESIGN STRESSES
PRECAST UNITS**

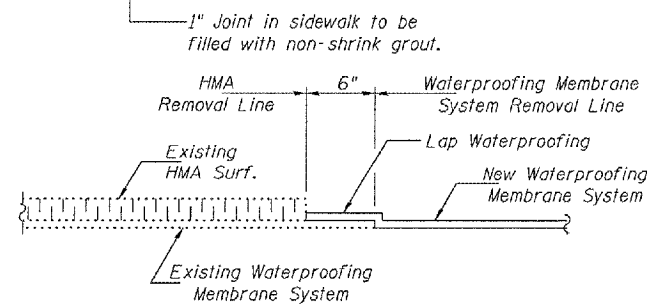
$f'_c = 5,000$ psi
 $f'_{ci} = 4,000$ psi
 $f'_s = 270,000$ psi ($1/2"$ ϕ low lax strands)
 $f'_{si} = 201,960$ psi ($1/2"$ ϕ low lax strands)



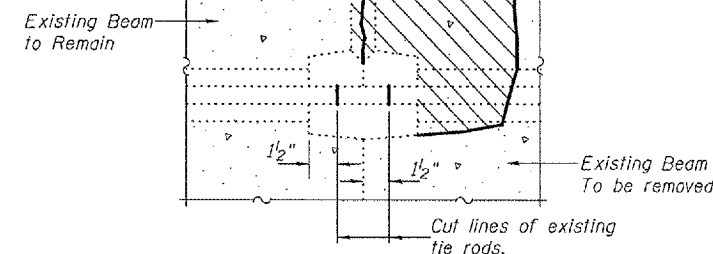
PLAN



ANTICIPATED INITIAL CAMBER DIAGRAM



WATERPROOFING TREATMENT



**BEAM REMOVAL DETAIL
AT TRANSVERSE TIES**



DESIGNED: Adrian T. Hallway
CHECKED: [Signature]
DRAWN: [Signature]
CHECKED: [Signature]

January 15, 2008
EXAMINED: [Signature]
PASSED: [Signature]

Expires: November 30, 2008

**PLAN AND ELEVATION
F.A. RT. 9669
JACKSON COUNTY
SN 039-0036**

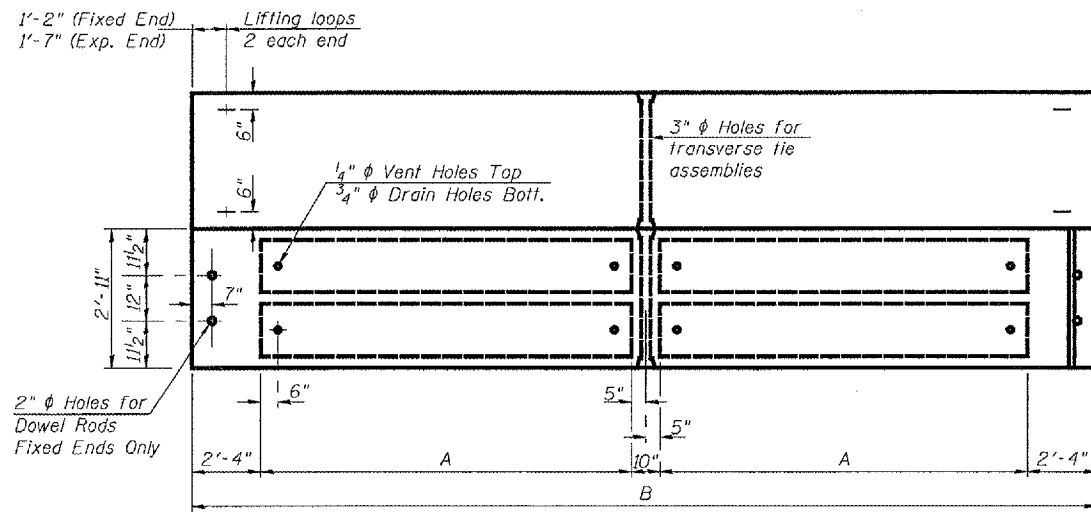
STATE OF ILLINOIS
DEPARTMENT OF TRANSPORTATION

| | | | | |
|-----------------------|----------|------------------|-------|-------------|
| ROUTE NO. | SECTION | COUNTY | SHEET | SHEET NO. 2 |
| | | Jackson | 10 | 3 SHEETS |
| FED. ROAD DIST. NO. 7 | ILLINOIS | FED. AID PROJECT | | |

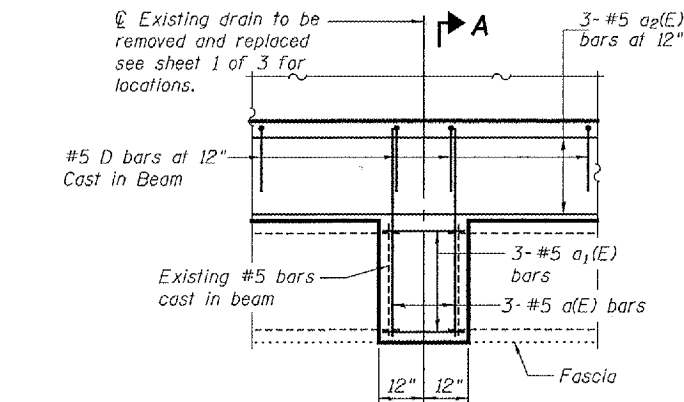
Contract Number: 78036

Table of Dimensions

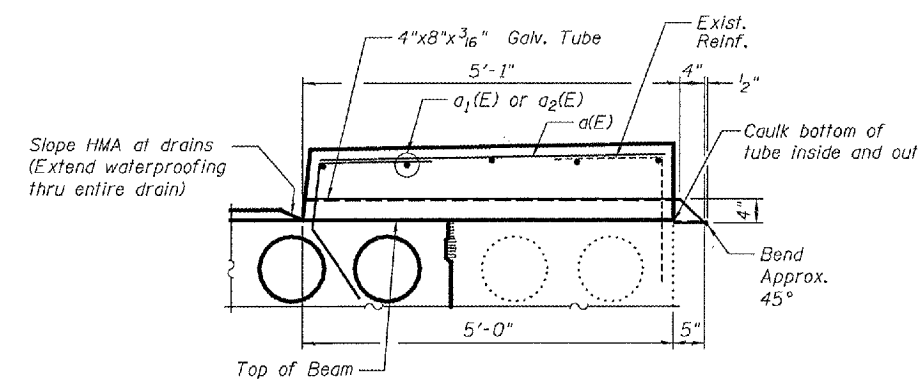
| Span | Dim A | Dim B |
|------|--------------------------------------|-------------------------------------|
| 1 | 17'-4 ⁵ / ₁₆ " | 40'-2 ⁵ / ₈ " |
| 2 | 17'-4 ⁵ / ₁₆ " | 40'-2 ⁵ / ₈ " |
| 7 | 17'-8" | 40'-10" |



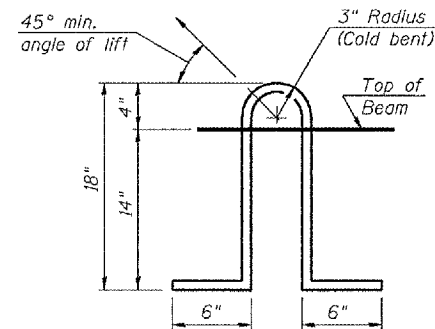
PLAN



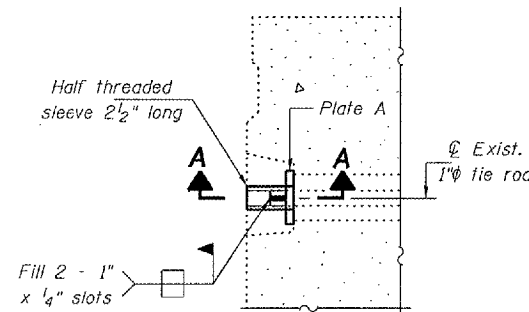
PLAN AT DRAIN SPAN 2



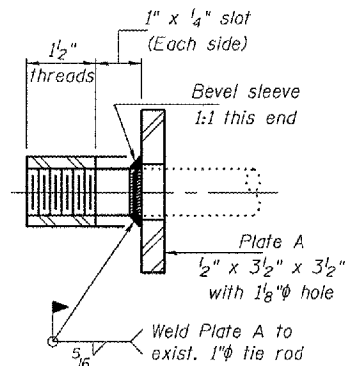
SECTION A-A



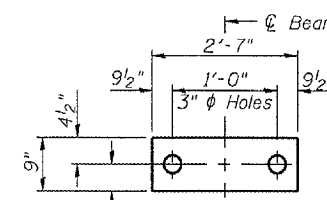
LIFTING LOOP DETAIL



DETAIL A

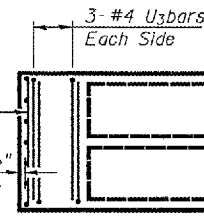


SECTION A-A
(3 Required)

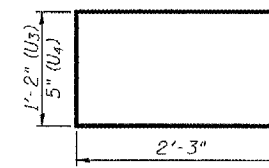


FABRIC BEARING PAD

(Fixed shown, expansion similar without holes)



END PLAN

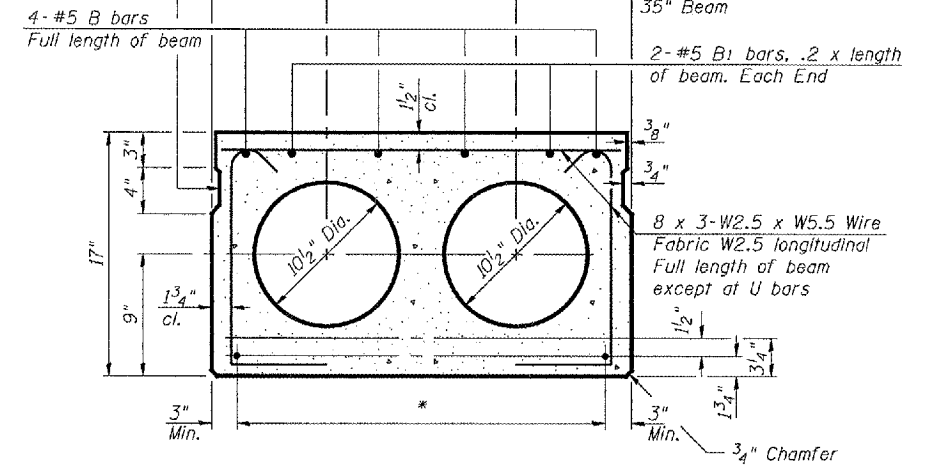


BAR U3 & U4

NOTES

Prestressing steel shall be uncoated high strength, low relaxation 7-wire strand, Grade 270. The nominal diameter shall be 1/2" and the nominal cross-sectional area shall be 0.153 sq. in. Lifting loops shall be 2 - 1/2" φ-270 ksi strands, as shown. The 1" φ rods in the transverse tie assembly shall be tightened to a snug fit and the threads set. Pockets that receive transverse tie bar on outside shall be filled with grout after transverse tie assembly is in place. Non prestressing steel shall conform to ASTM A 706 (IL MOD), Grade 60. The bearing seat surfaces shall be adjusted by shimming to assure firm and even bearing. Two 1/8" fabric adjusting shims of the dimensions of the Exterior Bearing Pad shall be provided for each bearing. Keyway surfaces shall be cleaned to remove form oil or other bond breaking material prior to shipment of the beams. Cleaning shall be done by sandblasting the keyway areas between top of the beam and the bottom edge of the key. Corrosion Inhibitor, per Article 1020.05(b)(12) of the Standard Specifications, shall be used in the concrete for precast prestressed concrete deck beams. Required Release Strength, f'ci, shall be 4,000 p.s.i.

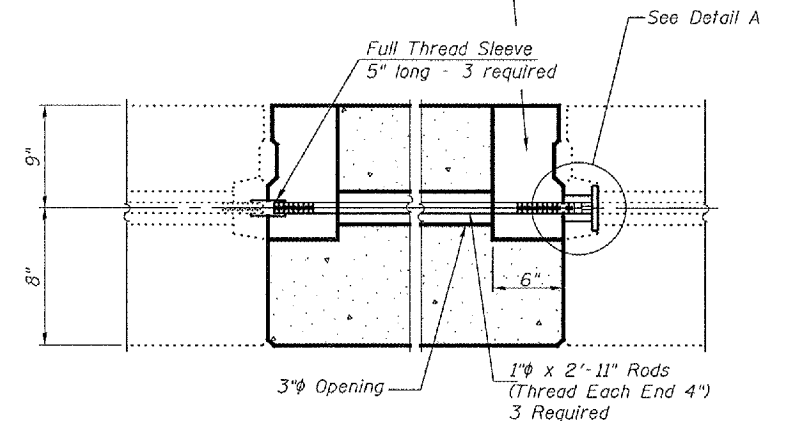
Omit key on exterior face of outside beams.



TYPICAL SECTION

1/2" φ Strands, Each Strand Stressed to 30,900 Lbs. 9-Strands 1 3/4" up, 2-Strands 3/4" up, 2-Strands 12" up

6" x 6" x 1 1/2" Blockout to be filled with Class BS Concrete after Beams have been installed. Cost shall be included in the cost of "Concrete Superstructure". Omit on exterior of fascia beams.



TYPICAL TRANSVERSE TIE ASSEMBLY

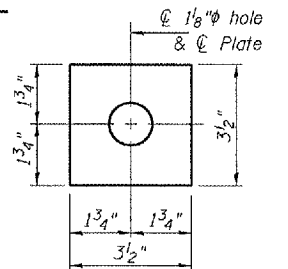


PLATE A
(3 Required)

BILL OF MATERIAL

| Bar | No. | Size | Length | Shape |
|---|-----|------|---------|-------|
| a(E) | 6 | #5 | 4'-8" | — |
| a1(E) | 6 | #5 | 1'-10" | — |
| a2(E) | 3 | #5 | 40'-0" | — |
| b(E) | 9 | #5 | 2'-9" | — |
| Concrete Removal | | | Cu. Yd. | 3.7 |
| Concrete Superstructure | | | Cu. Yd. | 3.9 |
| Reinforcement Bars, Epoxy Coated | | | Lbs. | 190 |
| Precast Prestressed Conc. Deck Bms. 17" | | | Sq. Ft. | 354 |

BEAM DETAILS
F.A. RT. 9669
JACKSON COUNTY
SN 039-0036

| | |
|----------|------------------|
| DESIGNED | A.T.H. |
| CHECKED | A.J.B. |
| DRAWN | Drew Christopher |
| CHECKED | A.T.H. A.J.B. |

| | |
|----------|---|
| EXAMINED | January 15, 2008 |
| PASSED | Ralph E. Anderson ENGINEER OF BRIDGES AND STRUCTURES |

PD-3-S 11-1-06

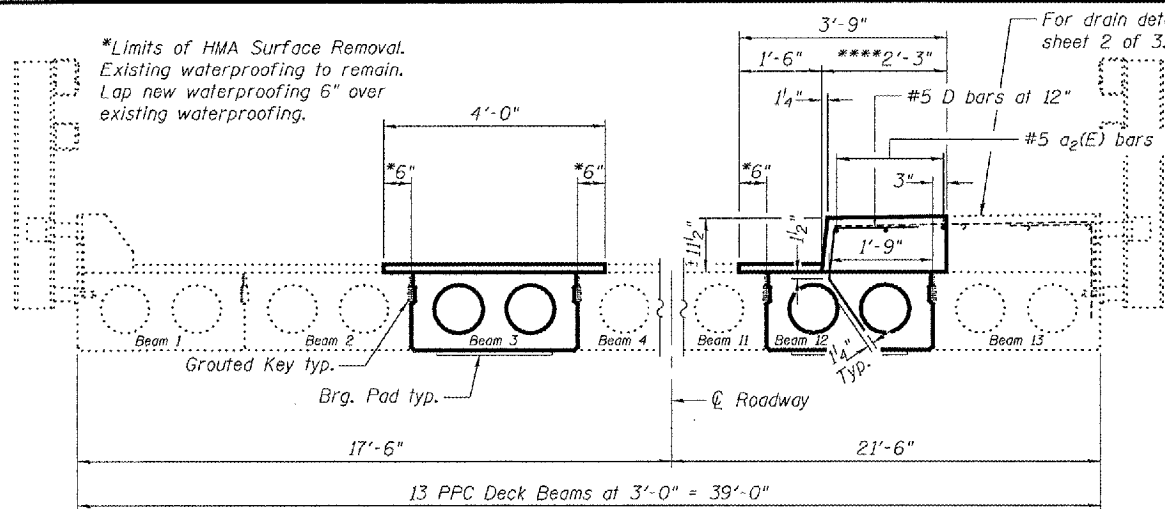
STATE OF ILLINOIS
DEPARTMENT OF TRANSPORTATION

| ROUTE NO. | SECTION | COUNTY | TOTAL SHEETS | SHEET NO. |
|-----------|---------|---------|--------------|-----------|
| | | Jackson | 10 | 8 |

Contract Number: 78036

SHEET NO. 3
3 SHEETS

*Limits of HMA Surface Removal.
Existing waterproofing to remain.
Lap new waterproofing 6" over
existing waterproofing.

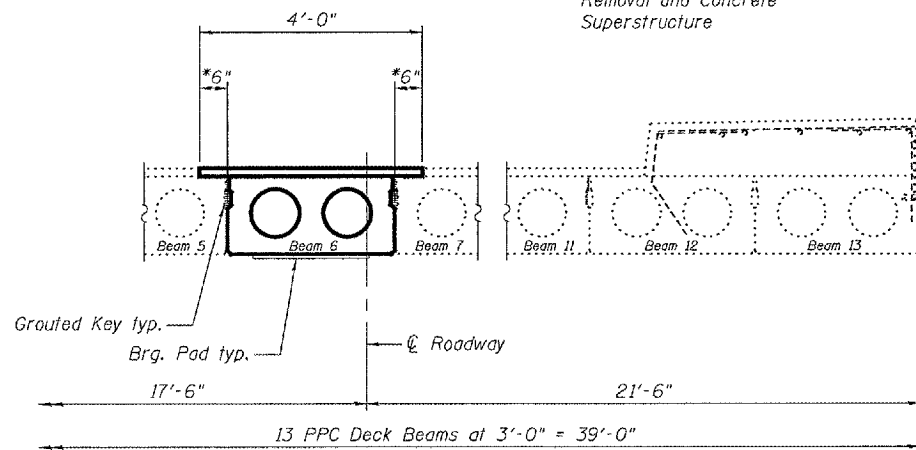


SPAN 1 ELEVATION
(Looking West)

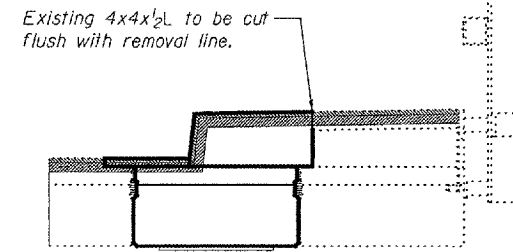
SPAN 2 ELEVATION
(Looking West)

***1" Joint shall be filled with
non-shrink grout. Dimension
may vary to accommodate
tolerance in beam lengths.

****Concrete in this area is
included with Concrete
Removal and Concrete
Superstructure

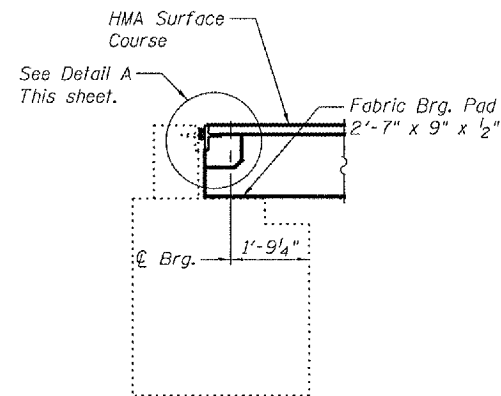


SPAN 7 ELEVATION
(Looking West)

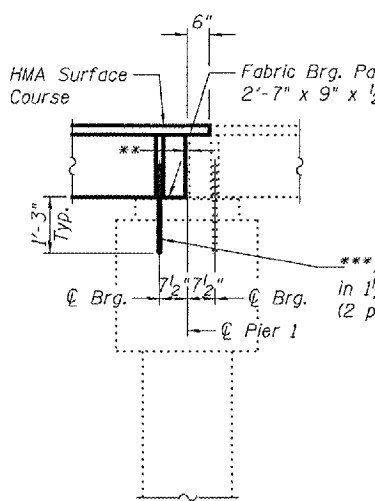


END OF JOINT TREATMENT

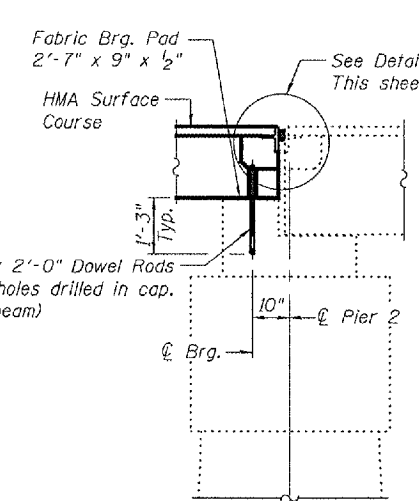
Note: After fabrication all surfaces
of the steel plates shall be given
one shop coat of paint specified
for Structural Steel. No field
painting required.



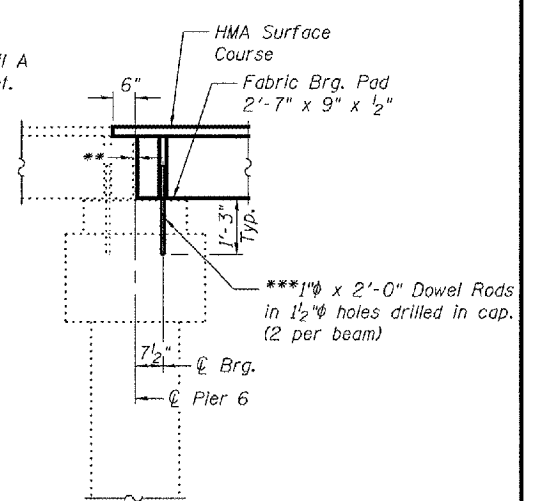
TYPICAL ABUTMENT SECTION



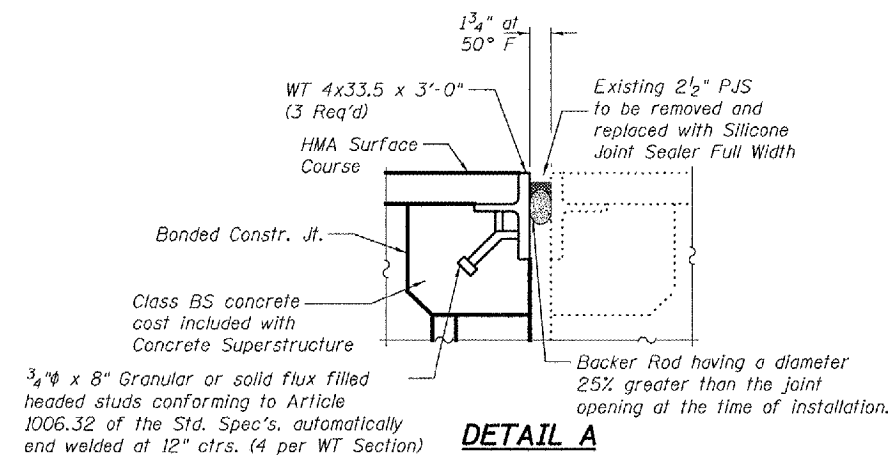
PIER 1 SECTION



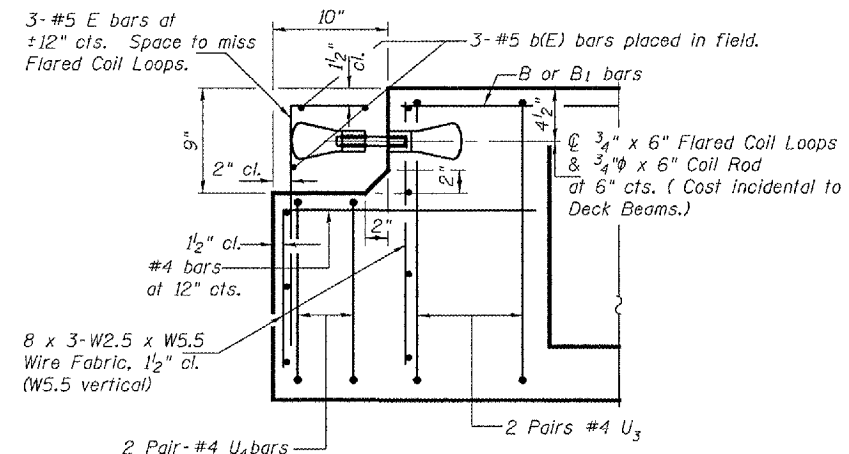
PIER 2 SECTION



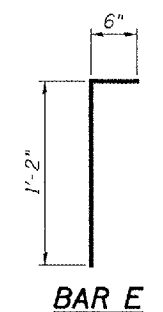
PIER 6 SECTION



DETAIL A



END OF BEAM
(EXP. ENDS AND FIXED END PIER 2)



BAR E

| | |
|----------|------------------|
| DESIGNED | A.T.H. |
| CHECKED | A.J.B. |
| DRAWN | Drew Christopher |
| CHECKED | A.T.H. A.J.B. |

| | |
|----------|-------------------|
| EXAMINED | January 15, 2008 |
| PASSED | Ralph E. Anderson |

***Existing dowel rods are to be burned off, ground flush,
and sealed with epoxy prior to placement of new beams.
Cost included in Removal of Existing PPC Deck Beams.
After beams have been erected holes shall be drilled into
cap and dowel rods placed. Dowel holes shall be filled with
non-shrink grout to top of beam and allowed to cure a
minimum of 24 hours prior to grouting the shear keys.

BEAM DETAILS
F.A. RT. 9669
JACKSON COUNTY
SN 039-0036

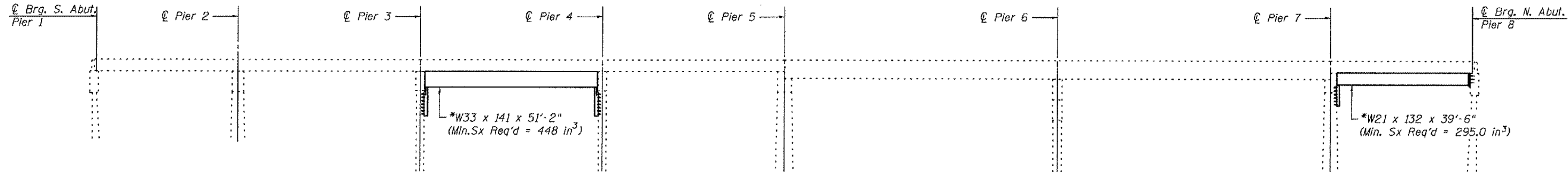
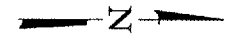
STATE OF ILLINOIS
DEPARTMENT OF TRANSPORTATION

| | | | | | |
|-----------------------|---------|----------|-----------|-------------------|-----------|
| ROUTE NO. | SECTION | COUNTY | SHEET NO. | SHEET | SHEET NO. |
| FAP 42 | | Jackson | 10 | 9 | 2 SHEETS |
| FED. ROAD DIST. NO. 4 | | ILLINOIS | | FED. ROAD PROJECT | |

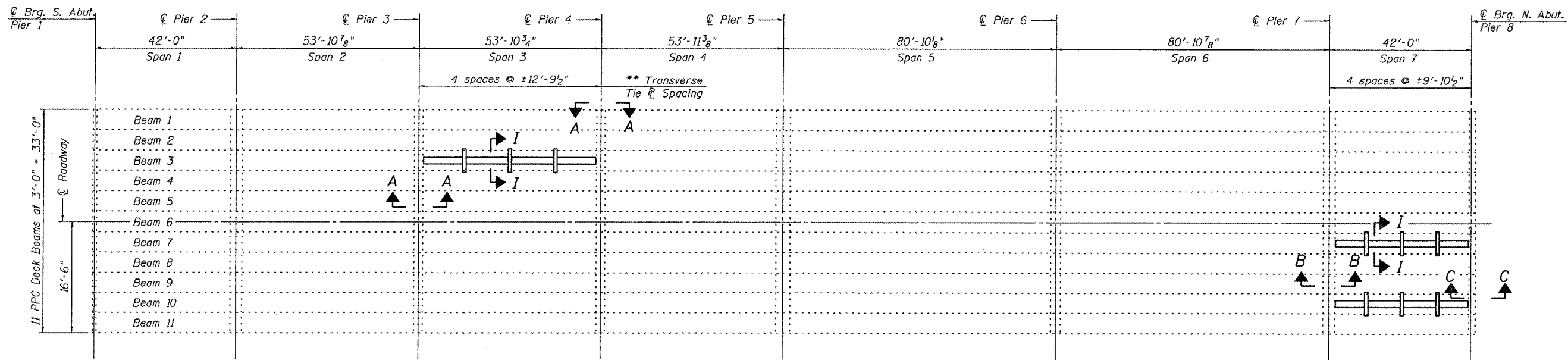
Contract # 78036

*Contractor is to verify beam length prior to ordering material. Other sections meeting the section modulus requirements shown may be allowed subject to approval by the Bureau of Bridges and Structures.

** \varnothing Transverse tie \varnothing 's (3 per span). Place additional shims at midpoints between tie \varnothing 's. Securely weld shims to top flange of support beam. Minimum shim size is 6" x flange width. Spacing may be adjusted to miss adjacent transverse tie \varnothing 's.



ELEVATION



PLAN

GENERAL NOTES

All structural steel shall conform to AASHTO Classification M-270 Gr. 36, unless otherwise noted.
Plan dimensions and details relative to existing plans are subject to routine variations. The Contractor shall field verify existing dimensions and details affecting new construction and make necessary approved adjustments prior to construction or ordering of materials. Such variations shall not be cause for additional compensation for a change in scope of the work, however, the Contractor will be paid for the quantity actually furnished based upon the unit price bid for the work.

See Section 584 of the Standard Specifications for Epoxy Grouting of Threaded Rods; Min. embedment 9".

The cost of epoxy grouted threaded rods shall be included with Furnishing and Erecting Structural Steel.

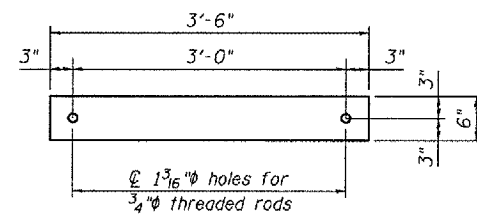
The contractor is advised that the existing PPC Deck Beams are in a deteriorated condition with reduced load carrying capacity. It is the contractor's responsibility to account for the condition of the beams when developing construction procedures.

If the contractor's procedure for placement of beams involves placement of cranes or other heavy equipment on the bridge, a detailed procedure shall be submitted to the Engineer for approval. The procedure shall include calculations, prepared and sealed by an Illinois Licensed Structural Engineer, verifying that the equipment and procedure used will not overstress the existing beams. To distribute load to multiple beams and protect the existing surface, in all cases a double layer mat of heavy timbers shall be used at all times under crane tracks or wheels and any outriggers in the down position. If necessary, shims shall be used under the crane mat to ensure uniform contact with the underlying beams.

TOTAL BILL OF MATERIAL

| ITEM | UNIT | QUANTITY |
|--|-------|----------|
| Furnishing and Erecting Structural Steel | Pound | 19,600 |

Contractor has the option of using used steel. See Special Provision.



TRANSVERSE TIE \varnothing
1/2" x 3'-6" x 6" (9 Req'd.)



| | |
|----------|-----|
| DESIGNED | CMV |
| CHECKED | SDS |
| DRAWN | DLH |
| CHECKED | CMV |



GENERAL PLAN AND ELEVATION
REPAIR DETAILS
IL RTE 13 & IL RTE 127
OVER BEAUCOUP CREEK
JACKSON COUNTY
S.N. 039-0009

Operator: dhaberting Date: 11/26/2007 Filename: L:\Jobs\IDOT BBS\6727 BBS Various\Various\6727.09\CADD_Struct\I.S.N. 039-0009_rev 1.dgn

Operator: dtheberling

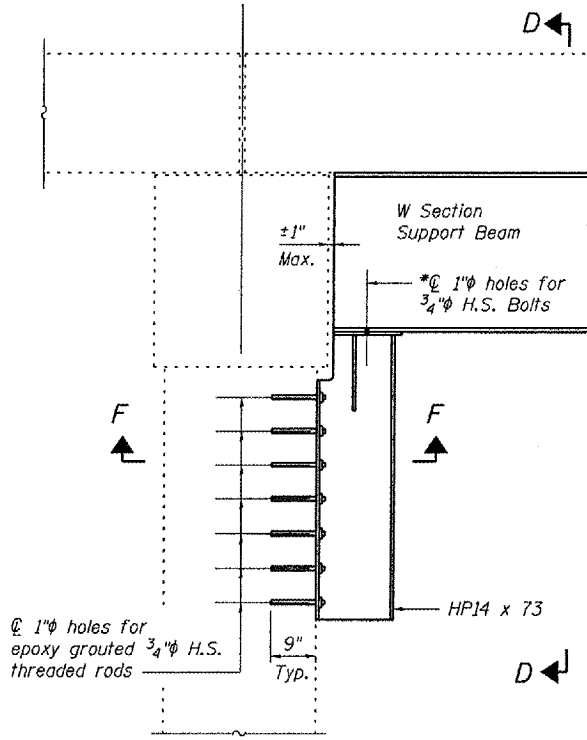
Date: 11/26/2007

Filename: L:\Jobs\IDOT BBS\6727 BBS Various Various\6727.09\CADD_S\N. 039-0009\rev 1.dgn

STATE OF ILLINOIS
DEPARTMENT OF TRANSPORTATION

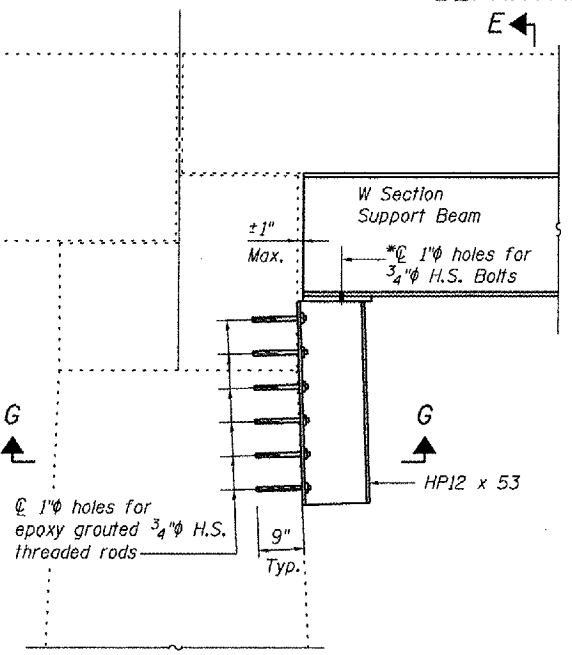
| | | | | |
|---------------------|---------|----------|----------------|-----------|
| ROUTE NO. | SECTION | COUNTY | NO. SHEETS | SHEET NO. |
| FAP 42 | | Jackson | 10 10 | 2 |
| FED. ROAD DIST. NO. | | ILLINOIS | REPAIR PROJECT | |

Contract # 78036

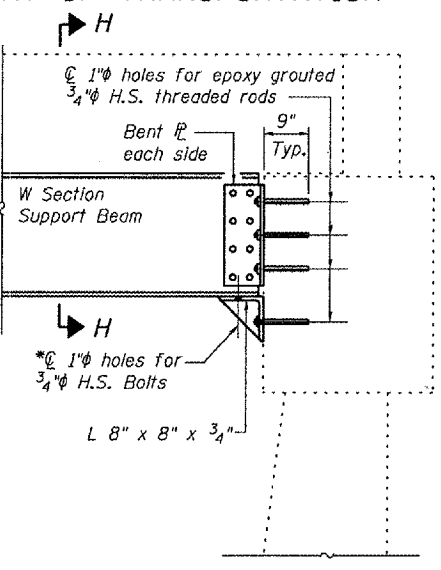


SECTION A-A
(At Pier 3 & Pier 4)

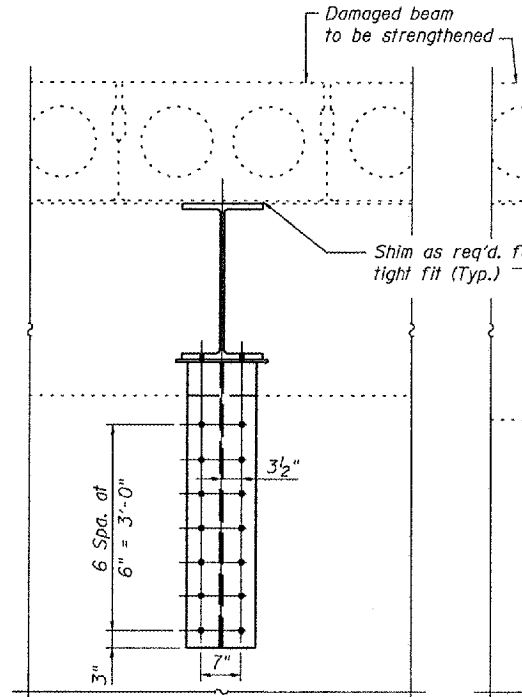
*Field drill holes in support beam using hole in top bearing flange as a template.



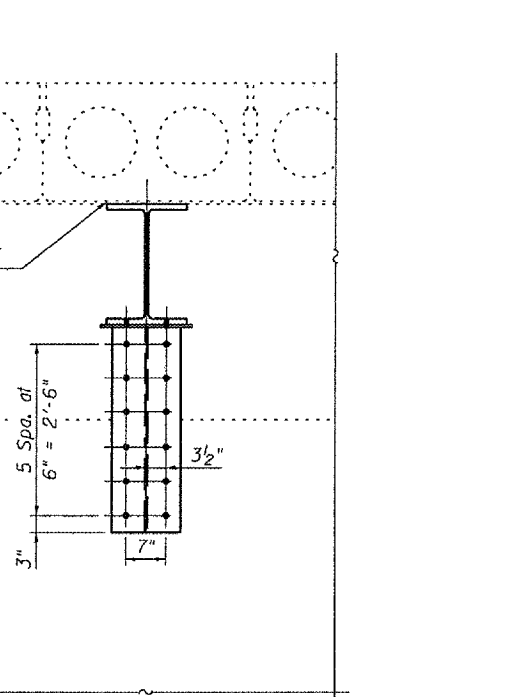
SECTION B-B
(At Pier 7)



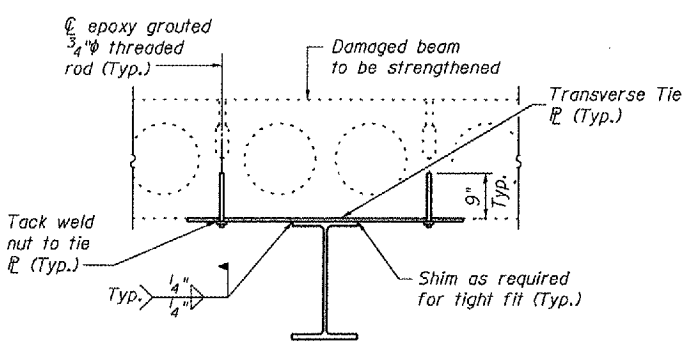
SECTION C-C
(At N. Abut.)



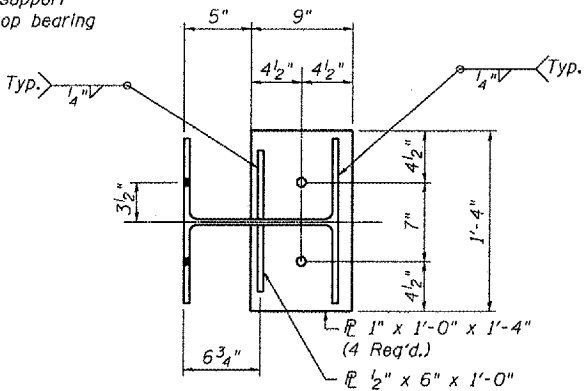
SECTION D-D



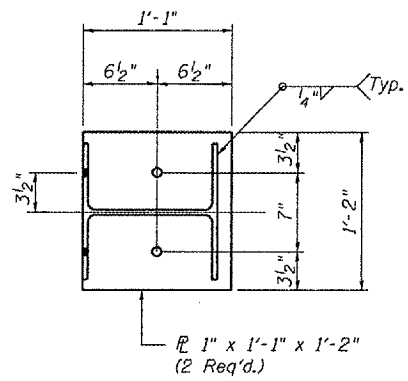
SECTION E-E



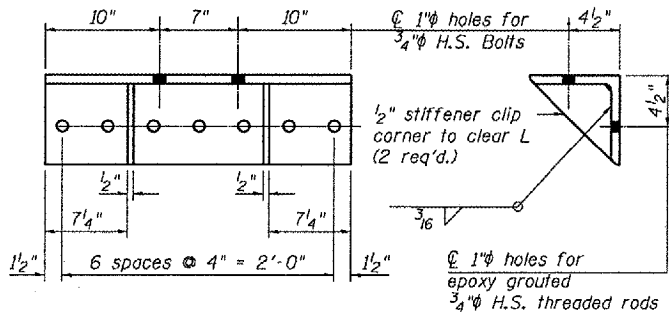
SECTION I-I



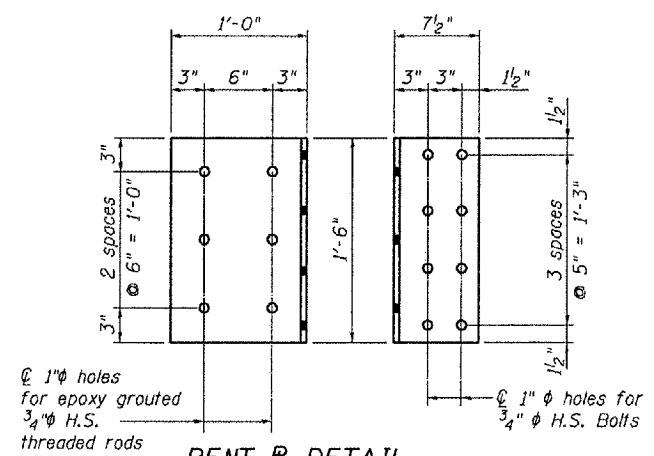
SECTION F-F



SECTION G-G

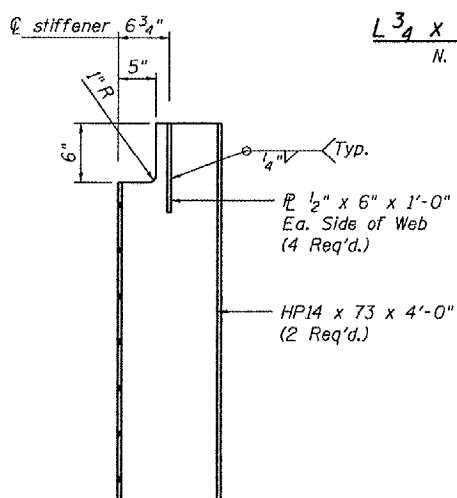


SECTION H-H
(At N. Abut.)



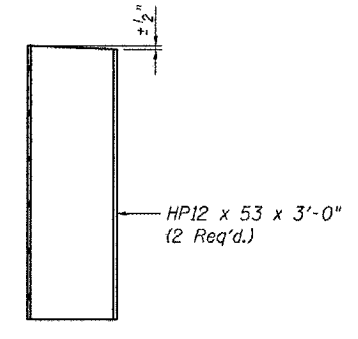
BENT FLANGE DETAIL

Flange 1/2" x 1'-6" x 1'-7 1/2" N. Abut. (4 Req'd.)



TYPICAL HP SECTION
(Pier 3 & 4)

L 3/4 x 8 x 8 x 2'-3" N. Abut. (2 Req'd.)



TYPICAL HP SECTION
(Pier 7)

| | |
|----------|-----|
| DESIGNED | CMV |
| CHECKED | SDS |
| DRAWN | DLH |
| CHECKED | CMV |

WHKS & CO.
ENGINEERS PLANNERS LAND SURVEYORS
MASON CITY, IOWA DUBUQUE, IOWA AMES, IOWA
E. DUBUQUE, ILLINOIS SPRINGFIELD, ILLINOIS ROCHESTER, MINNESOTA

REPAIR DETAILS
IL RTE 13 & IL RTE 127
OVER BEAUCOUP CREEK
JACKSON COUNTY
S.N. 039-0009