

STATE OF ILLINOIS
DEPARTMENT OF TRANSPORTATION
DIVISION OF HIGHWAYS

PROPOSED
HIGHWAY PLANS

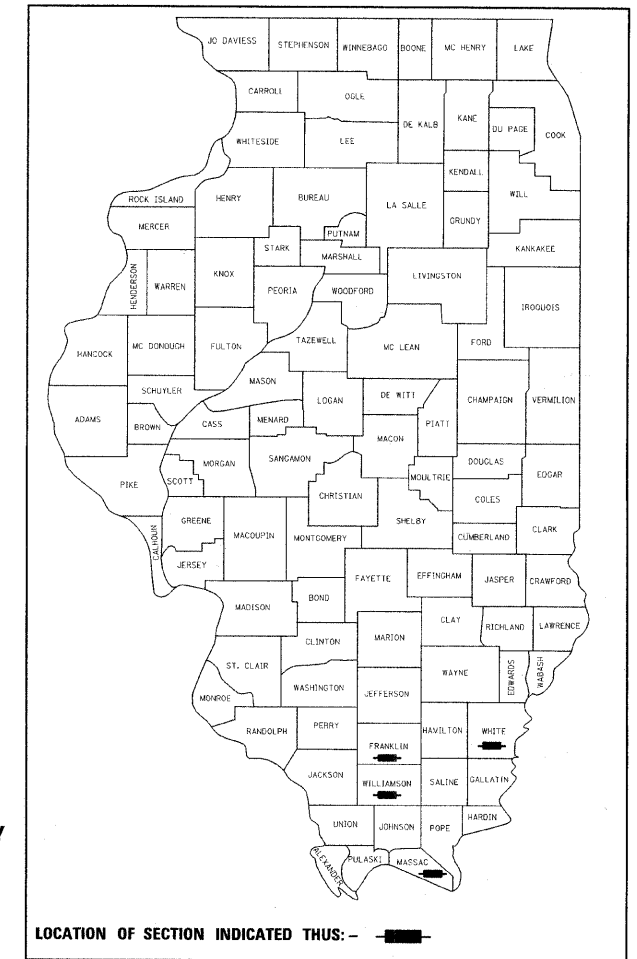
VARIOUS ROUTES

SECTION D9 SAFETY FY08-3
PROJECT: ACHSIP-0005(580)
VARIOUS COUNTIES

C-99-023-08

F.A. RTE.	SECTION	COUNTY	TOTAL SHEETS	SHEET NO.
D9 SAFETY FY08-3			16	1
FED. ROAD DIST. NO.	ILLINOIS	CONTRACT NO.	78042	
* FAP 782, FAP 873, FAS 904, FAS 961				
** WHITE, FRANKLIN, WILLIAMSON, MASSAC				

D-99-038-07



FOR INDEX OF SHEETS, SEE SHEET NO. 2
 FOR SUMMARY OF QUANTITIES, SEE SHEET NO. 3

LOCATION	ADT(2005)	%TRUCK
ILLINOIS 1	1,950	19%
ILLINOIS 149	1,950	7%
ILLINOIS 166	2,800	7%
US 45	5,700	5%

LOCATION #1
 WHITE COUNTY
 FAP ROUTE 782
 ILLINOIS 1

PROJECT BEGINS
 STA 39+65

PROJECT ENDS
 STA 213+00

LENGTH: LOCATION #1 - 3.3 MILES
 LOCATION #2 - 4.0 MILES
 LOCATION #3 - 4.0 MILES
 LOCATION #4 - 1.0 MILE
 TOTAL - 12.3 MILES

LOCATION #3
 WILLIAMSON COUNTY
 FAS ROUTE 904
 ILLINOIS 166

PROJECT ENDS
 STA 189+70

LOCATION #2
 FRANKLIN COUNTY
 FA ROUTE 873
 ILLINOIS 149

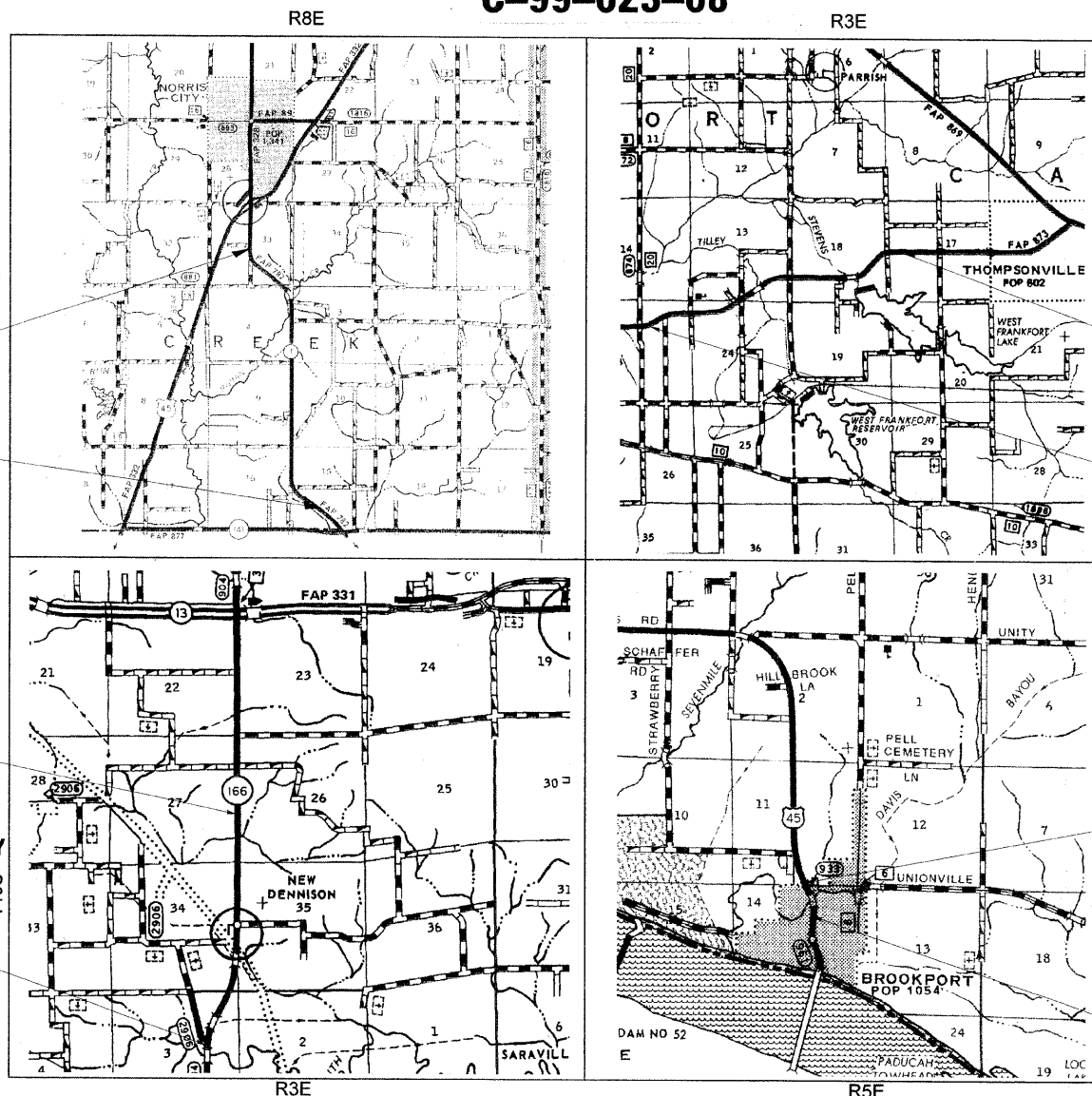
PROJECT ENDS
 STA 1140+17

PROJECT BEGINS
 STA 992+00

LOCATION #4
 MASSAC COUNTY
 FAS ROUTE 961
 US 45

PROJECT BEGINS
 STA 111+60

PROJECT ENDS
 STA 158+00



J.U.L.I.E.
 JOINT UTILITY LOCATION INFORMATION FOR EXCAVATION
 1-800-892-0123
 OR 811

PROJECT ENGINEER SUSAN POE
 PROJECT MANAGER CHRIS RUSSELL

CONTRACT NO. 78042

STATE OF ILLINOIS
 DEPARTMENT OF TRANSPORTATION
 DIVISION OF HIGHWAYS

SUBMITTED Dec 6 20 07
May Kramer
 DEPUTY DIRECTOR OF HIGHWAYS, REGION ENGINEER

February 1, 2008
Eric E. Horn
 INTERIM ENGINEER OF DESIGN AND ENVIRONMENT

February 1, 2008
Christine M. Reed
 DIRECTOR OF HIGHWAYS, CHIEF ENGINEER

**PRINTED BY THE AUTHORITY
 OF THE STATE OF ILLINOIS**

STANDARDS

- 280001-04 TEMPORARY EROSION CONTROL SYSTEMS
- 630001-07 STEEL PLATE BEAM GUARDRAIL
- 630101-07 GUARDRAIL MOUNTED ON EXISTING CULVERTS
- 631006-05 TRAFFIC BARRIER TERMINAL, TYPE 1B
- 631031-06 TRAFFIC BARRIER TERMINAL, TYPE 6
- 635006-02 REFLECTOR AND TERMINAL MARKER PLACEMENT
- 635011-01 REFLECTOR MARKER AND MOUNTING DETAILS
- 701006-02 OFF-ROAD OPERATIONS, 2L, 2W, 15' TO 24" FROM EDGE OF PAVEMENT
- 701326-02 LANE CLOSURE, 2L, 2W PAVEMENT WIDENING, FOR SPEEDS > 45 MPH
- 701901 TRAFFIC CONTROL DEVICES

GENERAL NOTES

- 1. ALL STEEL PLATE BEAM GUARDRAIL (SHORT RADIUS) SHALL HAVE 8.5' RADIUS

COMMITMENTS: NONE

INDEX OF SHEETS

SHEET NO.	DESCRIPTION
1	COVER SHEET
2	GENERAL NOTES, STANDARDS, INDEX OF SHEETS
3	SUMMARY OF QUANTITIES
4-7	GUARDRAIL SCHEDULE
8-9	HOT MIX ASPHALT SHOULDER SCHEDULE
10	EARTHWORK, SEEDING AND EROSION CONTROL SCHEDULE
11	DETAILS : TYPICAL, UNITY SCHOOL ROAD ALIGNMENT, TEMPORARY DITCH CHECK; LOCATION #3 RIGHT OF WAY
12	DETAILS : STEEL PLATE BEAM GUARDRAIL, SHORT RADIUS
13-16	CROSS SECTIONS IL 166

LOCATION #1 ILLINOIS 1 STATION EQUATION STA. 50+13.00 BK = STA. 50+84.30 AH STA. 83+77.10 BK = STA. 84+46.60 AH STA. 211+73.80 BK = STA. 212+82.00 AH
--

LOCATION #3 ILLINOIS 166 STATION EQUATION STA. 167+98.77 AH = STA. 167+96.44 BK STA. 188+87.30 BK = STA. 188+89.06 AH

LOCATION #2 ILLINOIS 149 STATION EQUATION STA. 1002+58.90 BK = STA. 1002+59.87 AH STA. 1016+56.20 BK = STA. 1016+58.91 AH STA. 1042+33.09 BK = STA. 1042+34.23 AH STA. 1076+44.97 BK = STA. 1076+47.32 AH STA. 1139+53.88 AH = STA. 1139+52.85 BK
--

Prepared By: *Dr. Alan Fiorino*
DISTRICT STUDIES & PLANNING ENGINEER

Examined By: *James Lewis Emery*
DISTRICT LAND ACQUISITION ENGINEER

Examined By: *Corrie Nelson*
DISTRICT PROGRAM DEVELOPMENT ENGINEER

Examined By: *Warren Hammons*
DISTRICT OPERATIONS ENGINEER

Examined By: *Joseph Linn*
DISTRICT CONSTRUCTION ENGINEER

Examined By: *Bruce W. Roberts*
DISTRICT MATERIALS ENGINEER

Examined By: *Shirley Smith*
DISTRICT PROJECT IMPLEMENTATION ENGINEER

Examined By: *William H. Hartman*
ASSISTANT REGIONAL ENGINEER

Approved By: *Mary C. Lamei*
DEPUTY DIRECTOR OF HIGHWAYS, REGION ENGINEER

DATE: Dec 6 2007

* FAP 782, FAP 873, FAS 904, FAS 961
** WHITE, FRANKLIN, WILLIAMSON, MASSAC

FILE NAME = c:\projects\4903607\4903607.plm32	USER NAME = russellcf	DESIGNED -	REVISED -	STATE OF ILLINOIS DEPARTMENT OF TRANSPORTATION	GENERAL NOTES, STANDARDS, AND INDEX OF SHEETS	F.A. RTE.	SECTION	COUNTY	TOTAL SHEETS	SHEET NO.	
		DRAWN -	REVISED -			*	D9 SAFETY FY08-3	**	16	2	
		CHECKED -	REVISED -			CONTRACT NO. 78042					
		DATE -	REVISED -			SCALE:	SHEET NO.	OF	SHEETS	STA.	TO STA.

SUMMARY OF QUANTITIES

CODE NUMBER	ITEM DESCRIPTION	UNIT	TOTAL QUANTITY	HSIP 90% FEDERAL / 10% STATE			
				LOCATION 1 IL 1 WHITE COUNTY	LOCATION 2 IL 149 FRANKLIN COUNTY	LOCATION 3 IL 166 WILLIAMSON COUNTY	LOCATION 4 US 45 MASSAC COUNTY
				SFTY-2A	SFTY-2A	SFTY-2A	SFTY-2A
	CONSTRUCTION TYPE CODE						
20100210	TREE REMOVAL (OVER 15 UNITS DIAMETER)	UNIT	39	0	0	39	0
20200100	EARTH EXCAVATION	CUYD	886	0	0	886	0
20200600	EXCAVATING AND GRADING EXISTING SHOULDER	UNIT	342	67	120	76	79
25000350	SEEDING, CLASS 7	ACRE	0.46	0	0	0.46	0
25000400	NITROGEN FERTILIZER NUTRIENT	POUND	74	0	0	74	0
25000500	PHOSPHORUS FERTILIZER NUTRIENT	POUND	56	0	0	56	0
25000600	POTASSIUM FERTILIZER NUTRIENT	POUND	56	0	0	56	0
25000700	AGRICULTURAL GROUND LIMESTONE	TON	0.92	0	0	0.92	0
25001010	SEEDING, CLASS 2 (MODIFIED)	ACRE	0.46	0	0	0.46	0
25100115	MULCH, METHOD 2	ACRE	0.92	0	0	0.92	0
25100630	EROSION CONTROL BLANKET	SOYD	112	0	0	112	0
28000300	TEMPORARY DITCH CHECKS	EACH	4	0	0	4	0
48203021	HOT-MIX ASPHALT SHOULDERS, 6"	SOYD	8,057	1,428	2,595	2,315	1,719
63000000	STEEL PLATE BEAM GUARDRAIL, TYPE A	FOOT	6,030.0	1,437.5	1,292.5	3,075.0	225.0
63000025	STEEL PLATE BEAM GUARDRAIL, ATTACHED TO STRUCTURE	FOOT	37.5	25	12.5	0	0
63100041	TRAFFIC BARRIER TERMINAL, TYPE 1B	EACH	5	2	1	0	2
63100085	TRAFFIC BARRIER TERMINAL, TYPE 6	EACH	8	0	4	4	0
63100167	TRAFFIC BARRIER TERMINAL, TYPE 1(SPECIAL)-TANGENT	EACH	30	12	3	12	3
63200310	GUARDRAIL REMOVAL	FOOT	2,736	479	998	1,159	100
63300725	STEEL PLATE BEAM GUARDRAIL (SHORT RADIUS)	FOOT	52	26	13	0	13
67100100	MOBILIZATION	L SUM	1.0	0.25	0.25	0.25	0.25
70100500	TRAFFIC CONTROL AND PROTECTION, STANDARD 701326	L SUM	1.0	0.25	0.25	0.25	0.25
78200405	GUARDRAIL MARKER	EACH	180	53	34	76	17
78201000	TERMINAL MARKER - DIRECT APPLIED	EACH	35	14	4	12	5

• FAP 782, FAP 873, FAS 904, FAS 961
 ** WHITE, FRANKLIN, WILLIAMSON, MASSAC

FILE NAME c:\projects\4903807\4903807p1.m32	USER NAME = russellr	DESIGNED -	REVISED -	STATE OF ILLINOIS DEPARTMENT OF TRANSPORTATION	SUMMARY OF QUANTITIES				F.A. RTE.	SECTION	COUNTY	TOTAL SHEETS	SHEET NO.	
	PLOT SCALE = 50.00' / IN.	DRAWN -	REVISED -		SCALE:	SHEET NO.	OF	SHEETS	STA.	TO STA.	D9 SAFETY FY08-3	**	16	3
	PLOT DATE = 11/21/2007	CHECKED -	REVISED -		CONTRACT NO. 78042									
		DATE -	REVISED -		FED. ROAD DIST. NO. ILLINOIS FED. AID PROJECT									

LOCATION #1 - IL 1 GUARDRAIL SCHEDULE

LOCATION STATION TO STATION	GUARDRAIL REMOVAL	STEEL PLATE BEAM GUARDRAIL, TYPE A	STEEL PLATE BEAM GUARDRAIL, ATTACHED TO STRUCTURE	STEEL PLATE BEAM GUARDRAIL, SHORT RADIUS	TRAFFIC BARRIER TERMINAL TYPE 1B	TRAFFIC BARRIER TERMINAL TYPE 1, SPECIAL (TAN)	TERMINAL MARKERS DIRECT APPLIED	GUARDRAIL MARKERS	COMMENTS
	FOOT	FOOT	FOOT	FOOT	EACH	EACH	EACH	EACH	
SN # - 097-0026									
LT 82+89 TO LT 83+14	25								
LT 81+64 TO LT 82+14						1	1	2	
LT 82+14 TO LT 83+14		100						2	
RT 83+61 TO RT 84+80.5	50					1	1	2	
RT 86+91 TO RT 87+16	25								
RT 86+91 TO RT 88+03.5		112.5				1	1	2	
RT 88+03.5 TO RT 88+53.5								2	
LT 87+00 TO LT 87+40	40								
LT 86+75 TO LT 89+00		225				1	1	3	
LT 89+00 TO LT 89+50								2	
SN # - 097-7032									
RT 93+41 TO RT 93+66	25								
RT 91+16 TO RT 91+66						1	1	2	
RT 91+66 TO RT 93+66		200						3	
LT 93+46 TO LT 94+85	139								
LT 92+37 TO LT 92+87						1	1	2	
LT 92+87 TO LT 93+99.5		112.5	25					2	
LT 93+99.5 TO LT 94+24.5									
LT 94+24.5 TO LT 96+49.5		225						3	
LT 96+49.5 TO LT 96+99.5						1	1	2	
RT 94+28 TO RT 94+53	25	25							
RT 94+53 TO RT 94+64.5				13				1	8.5' RADIUS
RT 94+64.5					1		1	2	
SN # - 097-7032									
LT 113+11 TO LT 113+36	25								
LT 111+98.5 TO LT 112+48.5						1	1	2	
LT 112+48.5 TO LT 113+36		87.5						2	
RT 113+11 TO RT 113+36	25								
RT 112+90					1		1	2	
RT 112+90 TO RT 112+98.5				13				1	8.5' RADIUS
RT 112+98.5 TO RT 113+36		37.5						1	
LT 114+12 TO LT 114+37	25								
LT 114+12 TO LT 116+24.5		212.5						3	
LT 116+24.5 TO LT 116+74.5						1	1	2	
RT 114+12 TO RT 114+37	25								
RT 114+12 TO RT 115+12		100				1	1	2	
RT 115+12 TO RT 115+62								2	
BOX CULVERT									
LT 164+02 TO LT 164+27	25								
LT 163+77 TO LT 164+27						1	1	2	
LT 164+54 TO LT 164+79	25								
LT 164+54 TO LT 165+04						1	1	2	
LOCATION #1 TOTALS	479	1437.5	25	26	2	12	14	53	0

• FAP 782, FAP 873, FAS 904, FAS 961
 ** WHITE, FRANKLIN, WILLIAMSON, MASSAC

FILE NAME = c:\projects\903807\d903807p1.m32	USER NAME = russellcf	DESIGNED - DRAWN -	REVISED - REVISED -	STATE OF ILLINOIS DEPARTMENT OF TRANSPORTATION	GUARDRAIL SCHEDULE				F.A. RTE.	SECTION	COUNTY	TOTAL SHEETS	SHEET NO.	
PLOT SCALE = 50.00' / IN.	CHECKED -	REVISED -	REVISED -		SCALE:	SHEET NO.	OF	SHEETS	STA.	TO STA.	D-9 SAFETY FY08-3	**	16	4
PLOT DATE = 11/21/2007	DATE -	REVISED -	REVISED -						CONTRACT NO. 78042		FED. ROAD DIST. NO. [ILLINOIS] FED. AID PROJECT			

LOCATION #2 - IL 149 GUARDRAIL SCHEDULE

LOCATION STATION TO STATION	GUARDRAIL REMOVAL	STEEL PLATE BEAM GUARDRAIL, TYPE A	STEEL PLATE BEAM GUARDRAIL, ATTACHED TO STRUCTURE	STEEL PLATE BEAM GUARDRAIL, SHORT RADIUS	TRAFFIC BARRIER TERMINAL TYPE 1B	TRAFFIC BARRIER TERMINAL TYPE 6	TRAFFIC BARRIER TERMINAL TYPE 1, SPECIAL (TAN)	TERMINAL MARKERS DIRECT APPLIED	GUARDRAIL MARKERS
	FOOT	FOOT	EACH	FOOT	EACH	EACH	EACH	EACH	EACH
SN # - 028-0041									
RT 1109+36 TO 1112+61 RT 1109+45	325				1			1	2
RT 1109+45 TO RT 1109+53.5		87.5		13					2
RT 1109+53.5 TO RT 1110+41			12.5						2
RT 1110+41 TO RT 1110+53.5									2
RT 1110+53.5 TO RT 1112+16		167.5				1			2
RT 1112+16 TO RT 1112+61									2
LT 1109+64 TO LT 1111+96	232								2
LT 1108+76 TO LT 1109+26							1	1	2
LT 1109+26 TO LT 1111+51		225.0							3
LT 1111+51 TO LT 1111+96						1			2
LT 1113+07 TO LT 1115+56	249								2
LT 1113+07 TO LT 1113+52						1			3
LT 1113+52 TO LT 1115+39.5		187.5							2
LT 1115+39.5 TO LT 1115+89.5							1	1	2
RT 1113+47 TO RT 1115+39	192								2
RT 1113+47 TO RT 1113+92						1			8
RT 1113+92 TO RT 1120+17		625.0							2
RT 1120+17 TO RT 1120+67							1	1	2
LOCATION #2 TOTALS	998	1292.5	12.5	13	1	4	3	4	34

LOCATION #3 - IL 166 GUARDRAIL SCHEDULE

LOCATION STATION TO STATION	GUARDRAIL REMOVAL	STEEL PLATE BEAM GUARDRAIL, TYPE A	TRAFFIC BARRIER TERMINAL TYPE 1, SPECIAL (TAN)	TRAFFIC BARRIER TERMINAL TYPE 6	TERMINAL MARKERS DIRECT APPLIED	GUARDRAIL MARKERS
	FOOT	FOOT	EACH	EACH		EACH
DOUBLE 8' x5' BOX CULVERT						
RT 96+62 TO RT 97+12	50		1		1	2
RT 95+37 TO RT 95+87		125				2
RT 95+87 TO RT 97+12						
LT 97+81 TO LT 98+31	50		1		1	2
LT 96+43.5 TO LT 96+93.5		137.5				2
LT 96+93.5 TO LT 98+31						
RT 98+26 TO RT 98+76	50					2
RT 98+26 TO RT 99+63.5		137.5				2
RT 99+63.5 TO RT 100+13.5			1		1	2
LT 99+46 TO LT 99+96	50					2
LT 99+46 TO LT 100+71		125				2
LT 100+71 TO LT 101+21			1		1	2
SN# - 100-2008						
RT 144+81 TO RT 145+31	50		1		1	2
RT 143+81 TO RT 144+31		100				2
RT 144+31 TO RT 145+31						
LT 146+38 TO LT 146+88	50		1		1	2
LT 144+88 TO LT 145+38		150				2
LT 145+38 TO LT 146+88						
RT 146+60 TO RT 147+10	50					2
RT 146+60 TO RT 148+10		150				2
RT 148+10 TO RT 148+60			1		1	2
LT 148+17 TO LT 148+67	50					2
LT 148+17 TO LT 149+17		100				2
LT 149+17 TO LT 149+67			1		1	2
SN# - 100-0029						
RT 174+75 TO RT 177+55	280		1		1	2
RT 171+35 TO RT 171+85		525				7
RT 171+85 TO RT 177+10						2
RT 177+10 TO RT 177+55				1		
LT 176+55 TO LT 177+27	72		1		1	2
LT 171+32 TO LT 171+82		500				7
LT 171+82 TO LT 176+82						2
LT 176+82 TO LT 177+27				1		
LT 178+80 TO LT 181+08	228					2
LT 178+80 TO LT 179+25		187.5		1		3
LT 179+25 TO LT 181+12.5			1		1	2
LT 181+12.5 TO LT 181+62.5						
RT 178+91 TO RT 180+70	179					2
RT 178+91 TO RT 179+36		837.5		1		11
RT 179+36 TO RT 187+73.5			1		1	2
RT 187+73.5 TO RT 188+23.5						
LOCATION #3 TOTALS	1159	3075	12	4	12	76

LOCATION #4 - US 45 GUARDRAIL SCHEDULE

LOCATION STATION TO STATION	GUARDRAIL REMOVAL	STEEL PLATE BEAM GUARDRAIL, TYPE A	STEEL PLATE BEAM GUARDRAIL, SHORT RADIUS	TRAFFIC BARRIER TERMINAL TYPE 1B	TRAFFIC BARRIER TERMINAL TYPE 1, SPECIAL (TAN)	TERMINAL MARKERS DIRECT APPLIED	GUARDRAIL MARKERS	COMMENTS
	FOOT	FOOT	FOOT	EACH	EACH	EACH	EACH	
SN# - 064-0006								
RT 118+43 TO RT 118+93	50							
RT 118+05.5 TO RT 118+55.5					1	1	2	
RT 118+55.5 TO RT 118+93		37.5					1	
LT 119+68 TO LT 119+93	25							
LT 118+55.5 TO LT 119+05.5					1	1	2	
LT 119+05.5 TO LT 119+93		87.5					2	
RT 121+44 TO RT 121+69	25							
RT 121+69 TO RT 121+77.5			13				2	8.5' RADIUS
RT 121+77.5				1		1	2	
RT 10+71 TO RT 10+96 (UNITY SCHOOL RD.)				1		1	2	
RT 10+71(UNITY SCH. RD.) TO LT 123+13(US 45)		100					2	50' RADIUS IN NE QUAD
LT 123+13 TO LT 123+63					1	1	2	
LOCATION #4 TOTALS	100	225	13	2	3	5	17	

LOCATION # 1 HOT-MIX ASPHALT SHOULDER SCHEDULE

LOCATION STATION TO STATION	GROSS LENGTH	NET LENGTH	HOT MIX ASPHALT SHOULDERS, 6"	EXCAVATING AND GRADING EXISTING SHOULDERS	REMARKS
	FOOT	FOOT	SQYD	UNIT	
IL 1 WHITE COUNTY					
LT 39+65 TO LT 51+85	1,148	1,148	256.0	12.0	2' WIDE SHOULDER
RT 39+65 TO RT 51+85	1,148	1,075	239.0	11.0	2' WIDE SHOULDER
LT 73+50 TO LT 81+00	750	750	167.0	8.0	2' WIDE SHOULDER
RT 73+50 TO RT 83+40	990	990	220.0	10.0	2' WIDE SHOULDER
LT 200+00 TO LT 213+00	1,300	1,248	278.0	13.0	2' WIDE SHOULDER
RT 200+00 TO RT 213+00	1,300	1,205	268.0	13.0	2' WIDE SHOULDER
LOCATION #1 TOTAL			1,428	67	

IL 1 OMISSIONS

STATION	TYPE	WIDTH
		FOOT
RT 43+81	ROAD 250E	73
RT 204+80	ROAD 250N	95
LT 205+14	ROAD 250N	52

LOCATION #1 - IL 1 SHOULDER SCHEDULE

LOCATION #2 HOT-MIX ASPHALT SHOULDER SCHEDULE

LOCATION STATION TO STATION	GROSS LENGTH	NET LENGTH	HOT MIX ASPHALT SHOULDERS, 6"	EXCAVATING AND GRADING EXISTING SHOULDERS	REMARKS
	FOOT	FOOT	SQYD	UNIT	
IL 149 FRANKLIN COUNTY					
LT 992+00 TO LT 1018+67	2,667	2,394	532.0	24.0	2' WIDE SHOULDER
RT 992+00 TO RT 1018+67	2,667	2,423	539.0	25.0	2' WIDE SHOULDER
LT 1032+30 TO LT 1042+74	1,044	877	195.0	9.0	2' WIDE SHOULDER
RT 1032+30 TO RT 1042+74	1,044	1,009	225.0	11.0	2' WIDE SHOULDER
LT 1066+55 TO LT 1077+45	1,090	1,090	243.0	11.0	2' WIDE SHOULDER
RT 1066+55 TO RT 1077+45	1,090	1,090	243.0	11.0	2' WIDE SHOULDER
LT 1115+90 TO LT 1121+67	577	577	129.0	6.0	2' WIDE SHOULDER
RT 1120+67 TO RT 1121+67	100	100	23.0	1.0	2' WIDE SHOULDER
LT 1129+70 TO LT 1140+17	1,047	1,047	233.0	11.0	2' WIDE SHOULDER
RT 1129+70 TO RT 1140+17	1,047	1,047	233.0	11.0	2' WIDE SHOULDER
LOCATION #2 TOTAL			2,595	120	

IL 149 OMISSIONS

STATION	TYPE	WIDTH
		FOOT
RT 993+67	LOGAN ROAD	64
LT 993+88	LOGAN ROAD	106
RT 1003+84	PRIVATE ENTRANCE	47
LT 1006+84	PRIVATE ENTRANCE	49
RT 1007+96	CEDAR HILL ROAD	92
LT 1009+32	PRIVATE ENTRANCE	40
RT 1011+98	PRIVATE ENTRANCE	41
LT 1015+32	PRIVATE ENTRANCE	40
LT 1016+98	PRIVATE ENTRANCE	38
LT 1033+33	PRIVATE ENTRANCE	29
LT 1036+19	PRIVATE ENTRANCE	31
LT 1038+83	PRIVATE ENTRANCE	36
RT 1038+95	PRIVATE ENTRANCE	35
LT 1041+28	PRIVATE ENTRANCE	40
LT 1042+15	PRIVATE ENTRANCE	31

LOCATION #2 - IL 149 SHOULDER SCHEDULE

• FAP 782, FAP 873, FAS 904, FAS 961
 ** WHITE, FRANKLIN, WILLIAMSON, MASSAC

FILE NAME = c:\projects\903807\d903807p1.m32	USER NAME = russellf	DESIGNED - DRAWN -	REVISED - REVISED -	STATE OF ILLINOIS DEPARTMENT OF TRANSPORTATION	SHOULDER SCHEDULE			F.A. RTE.	SECTION	COUNTY	TOTAL SHEETS	SHEET NO.		
	PLOT SCALE = 50.00' / IN.	CHECKED -	REVISED -					•	D-9 SAFETY FY08-3	**	16	8		
	PLOT DATE = 11/21/2007	DATE -	REVISED -					SCALE: SHEET NO. OF SHEETS STA. TO STA.			CONTRACT NO. 78042			
												FED. ROAD DIST. NO.	ILLINOIS	FED. AID PROJECT

LOCATION #3 HOT-MIX ASPHALT SHOULDER SCHEDULE

LOCATION STATION TO STATION	GROSS LENGTH	NET LENGTH	HOT MIX ASPHALT SHOULDERS, 6"	EXCAVATING AND GRADING EXISTING SHOULDERS	REMARKS
	FOOT	FOOT	SQYD	UNIT	
IL 166 WILLIAMSON COUNTY					
LT 148+67 TO LT 171+30	2,163	2,021	450.0	21.0	2' WIDE SHOULDER
RT 148+60 TO RT 171+30	2,270	2,180	485.0	22.0	2' WIDE SHOULDER
LT 171+30 TO LT 177+27	597	597	266.0	6.0	4' WIDE SHOULDER
RT 171+30 TO RT 177+55	625	625	278.0	7.0	4' WIDE SHOULDER
LT 178+80 TO LT 188+25	945	945	420.0	10.0	4' WIDE SHOULDER
RT 178+91 TO RT 188+25	934	934	416.0	10.0	4' WIDE SHOULDER
LOCATION #3 TOTAL			2,315	76	

IL 166 OMISSIONS

STATION	TYPE	WIDTH
		FOOT
RT 154+78	PRIVATE ENTRANCE	26
RT 156+52	PRIVATE ENTRANCE	35
LT 159+37	PRIVATE ENTRANCE	39
LT 161+14	PRIVATE ENTRANCE	47
LT 162+89	PRIVATE ENTRANCE	27
RT 167+05	PRIVATE ENTRANCE	38
LT 170+47	PRIVATE ENTRANCE	29

LOCATION #3 - IL 166 SHOULDER SCHEDULE

LOCATION #4 HOT-MIX ASPHALT SHOULDER SCHEDULE

LOCATION STATION TO STATION	GROSS LENGTH	NET LENGTH	HOT MIX ASPHALT SHOULDERS, 6"	EXCAVATING AND GRADING EXISTING SHOULDERS	REMARKS
	FOOT	FOOT	SQYD	UNIT	
US 45 MASSAC COUNTY					
LT 111+60 TO LT 118+55	695	695	155.0	7.0	2' WIDE SHOULDER
RT 111+60 TO RT 118+05	645	645	144.0	7.0	2' WIDE SHOULDER
LT 123+63 TO LT 158+00	3,437	3,213	714.0	33.0	2' WIDE SHOULDER
RT 123+00 TO RT 158+00	3,500	3,176	706.0	32.0	2' WIDE SHOULDER
LOCATION #4 TOTAL			1,719	79	

US 45 OMISSIONS

STATION	TYPE	WIDTH
		FOOT
RT 138+79	PRIVATE ENTRANCE	38
RT 142+57	PRIVATE ENTRANCE	37
LT 142+57	PRIVATE ENTRANCE	37
LT 143+64	PRIVATE ENTRANCE	39
RT 145+36	PRIVATE ENTRANCE	33
RT 146+52	PRIVATE ENTRANCE	40
LT 146+72	PRIVATE ENTRANCE	55
RT 147+71	PRIVATE ENTRANCE	30
LT 149+87	PRIVATE ENTRANCE	28
RT 150+20	HILLBROOK ROAD	41
RT 152+64	PRIVATE ENTRANCE	40
LT 153+75	PRIVATE ENTRANCE	65
RT 155+52	PRIVATE ENTRANCE	36
RT 156+61	PRIVATE ENTRANCE	29

LOCATION #4 - US 45 SHOULDER SCHEDULE

* FAP 782, FAP 873, FAS 904, FAS 961
 ** WHITE, FRANKLIN, WILLIAMSON, MASSAC

FILE NAME = c:\proj\jeeta\d90307\d90307p1.m32	USER NAME = russellcf	DESIGNED - DRAWN -	REVISED - REVISED -	STATE OF ILLINOIS DEPARTMENT OF TRANSPORTATION	SHOULDER SCHEDULE				F.A. RTE.	SECTION	COUNTY	TOTAL SHEETS	SHEET NO.
	PLOT SCALE = 50.00' / IN.	CHECKED -	REVISED -		SCALE:	SHEET NO.	OF	SHEETS	STA.	TO STA.	D-9 SAFETY FY08-3	16	9
	PLOT DATE = 11/21/2007	DATE -	REVISED -		CONTRACT NO. 78042				FED. ROAD DIST. NO.		ILLINOIS FED. AID PROJECT		

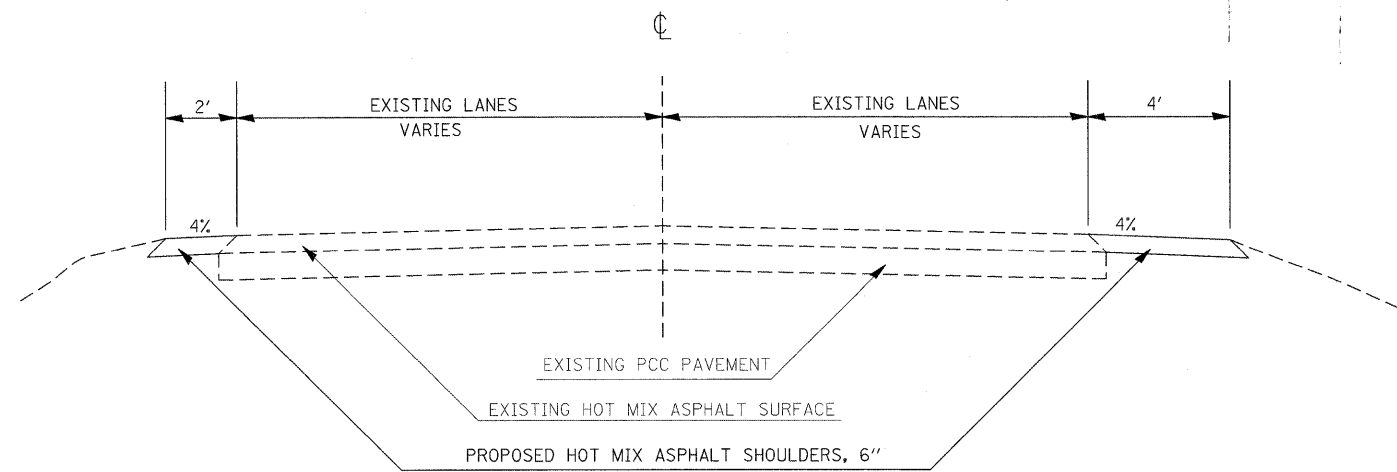
LOCATION #3 EARTHWORK SCHEDULE

LOCATION STATION TO STATION	EARTH EXCAVATION	EXCAVATION TO BE USED IN EMBANKMENT ADJUSTED FOR SHRINKAGE	EMBANKMENT	EARTHWORK BALANCE WASTE (+) OR SHORTAGE (-)	COMMENTS
	CU YD	CU YD	CU YD	CU YD	
IL 166 WILLIAMSON COUNTY					
LT 131+50 TO LT 134+00	350	263	22	241	
RT 131+50 TO RT 134+00	536	402	26	376	
	886			617	

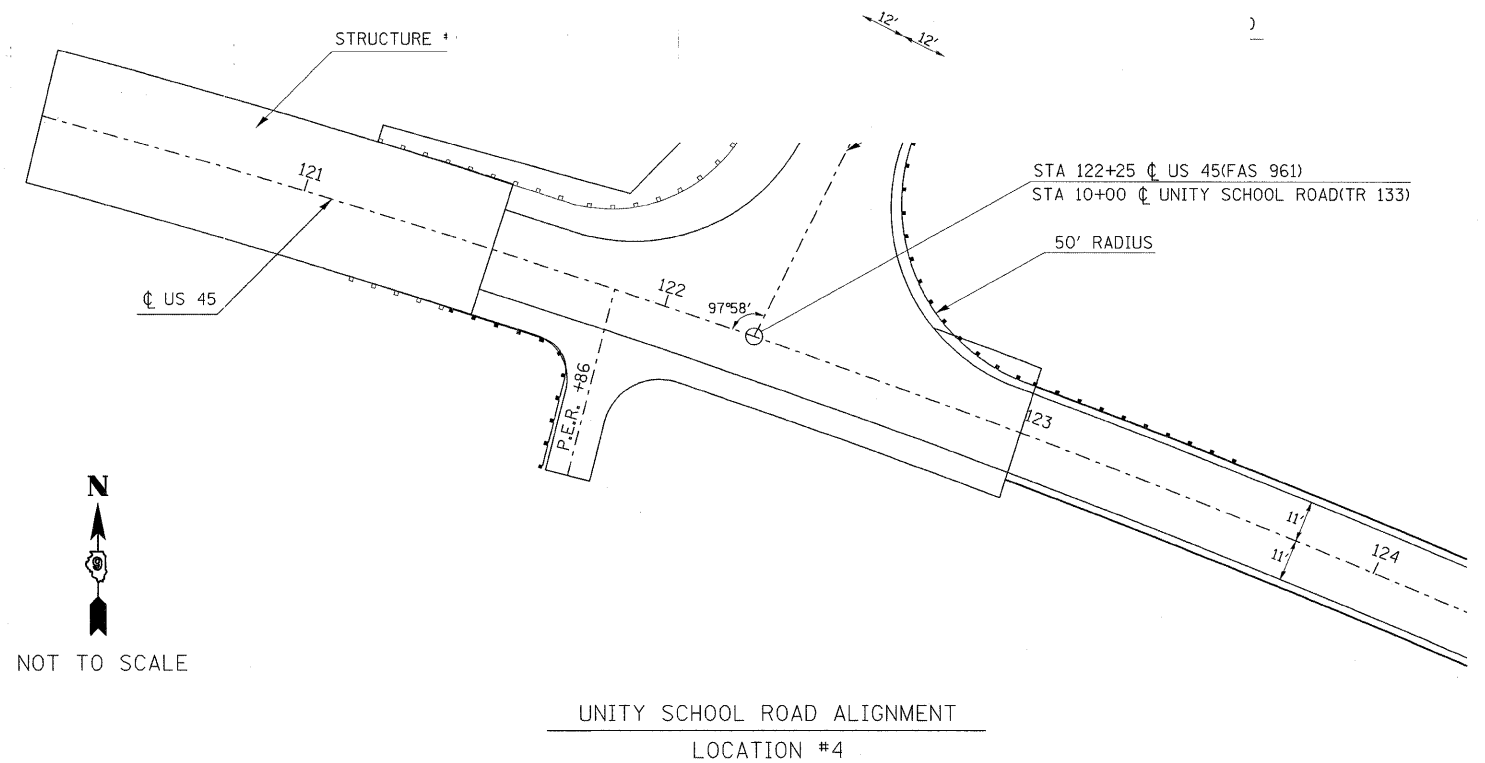
Shrinkage Factors: Earth Excavation 25%

LOCATION #3 SEEDING AND EROSION CONTROL SCHEDULE

LOCATION STATION TO STATION	SEEDING CLASS 2 (MODIFIED)	NITROGEN FERTILIZER NUTRIENT	PHOSPHORUS FERTILIZER NUTRIENT	POTASSIUM FERTILIZER NUTRIENT	AGRICULTURAL GROUND LIMESTONE	MULCH METHOD 2	EROSION CONTROL BLANKET	TEMPORARY DITCH CHECK	SEEDING CLASS 7	TREE REMOVAL (over 15 units diameter)
	ACRE	POUND	POUND	POUND	TON	ACRE	SQ YD	EACH	ACRE	UNIT
IL 166 WILLIAMSON COUNTY										
LT 131+50 TO LT 134+00	0.23	37	28	28	0.46	0.46	56		0.23	
RT 131+50 TO RT 134+00	0.23	37	28	28	0.46	0.46	56		0.23	
RT 132+00								1		
LT 132+00								1		
RT 133+25								1		
LT 132+25								1		
LT 133+04										39
	0.46	74	56	56	0.92	0.92	112	4	0.46	39

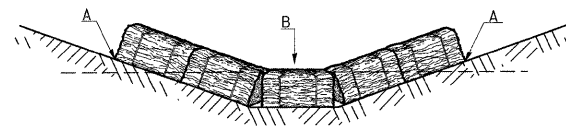


TO BE USED
SEE HOT MIX ASPHALT SHOULDER SCHEDULE



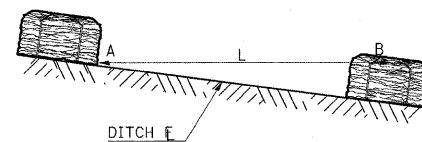
TEMPORARY DITCH CHECKS

PLACEMENT OF TEMPORARY STRAW BALE DITCH CHECK IN DRAINAGEWAY

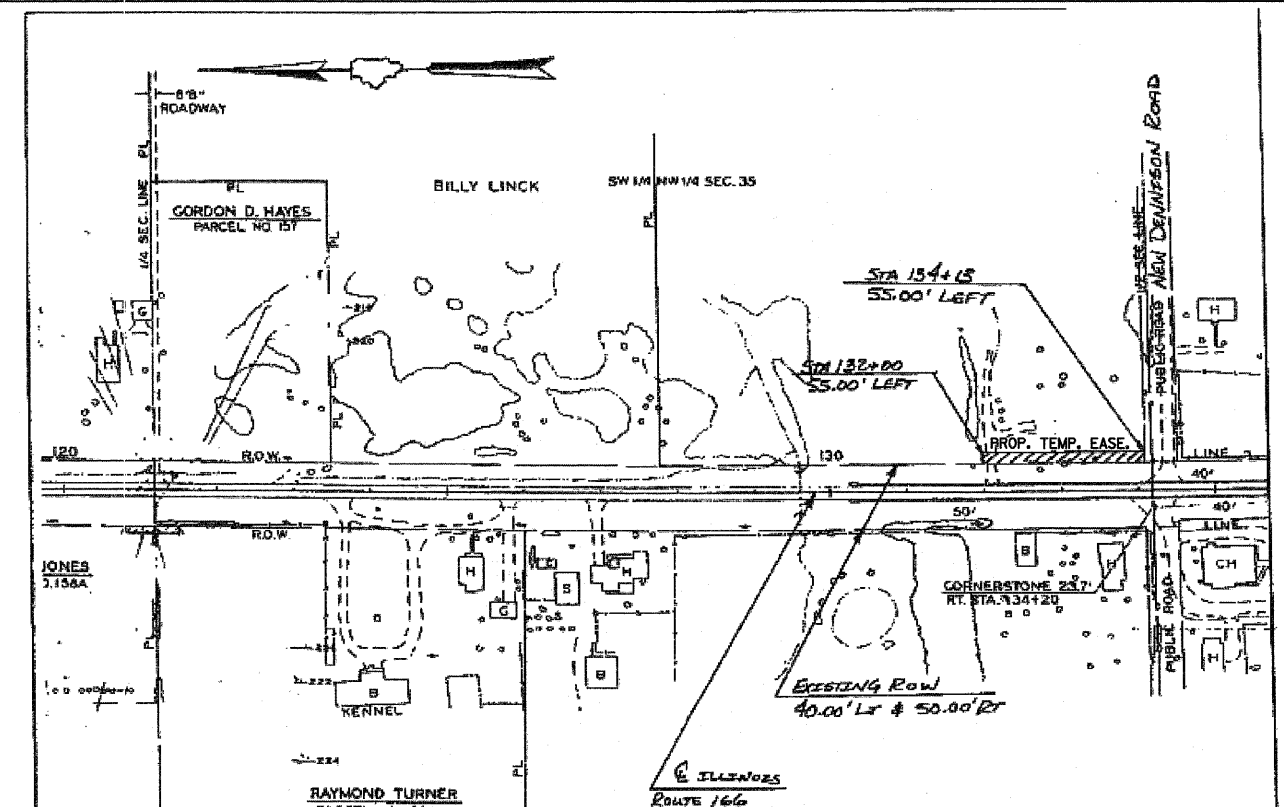


POINTS A SHOULD BE HIGHER THAN POINT B

SPACING BETWEEN TEMPORARY DITCH CHECKS



L = THE DISTANCE SUCH THAT POINTS A AND B ARE OF EQUAL ELEVATION
B = THE LOW POINT IN CENTER OF CHECK



ILLINOIS 166	D9 SAFETY 08-3	R-99-013-08	WILLIAMSON
ROUTE	SECTION	PROJECT NO.	JOB NO.
9005008	JOHN COMBS, RUTH V DUSON, JOYCE COMBS SMALL		4.0 +/-
PARCEL NO.	OWNER		AREA OF WHOLE PROP.
N/A	0.073 ACRES	T.E.	NOV 14, 2007
NEW R.O.W.	TEMP. EASE.	OTHER	DRAWN BY
			DATE

REVISIONS	
DRAWN	9-01-99
REVISED	10-3-01
REVISED	
REVISED	

STD. 9-108

STATE OF ILLINOIS
DEPARTMENT OF TRANSPORTATION

DETAILS AND RIGHT OF WAY

FILE NAME =
c:\projects\151w\1903807\1903807pl.m32

USER NAME = russellcf
DESIGNED -
DRAWN -
PLOT SCALE = 50.00' / IN.
CHECKED -
PLOT DATE = 12/6/2007
DATE -

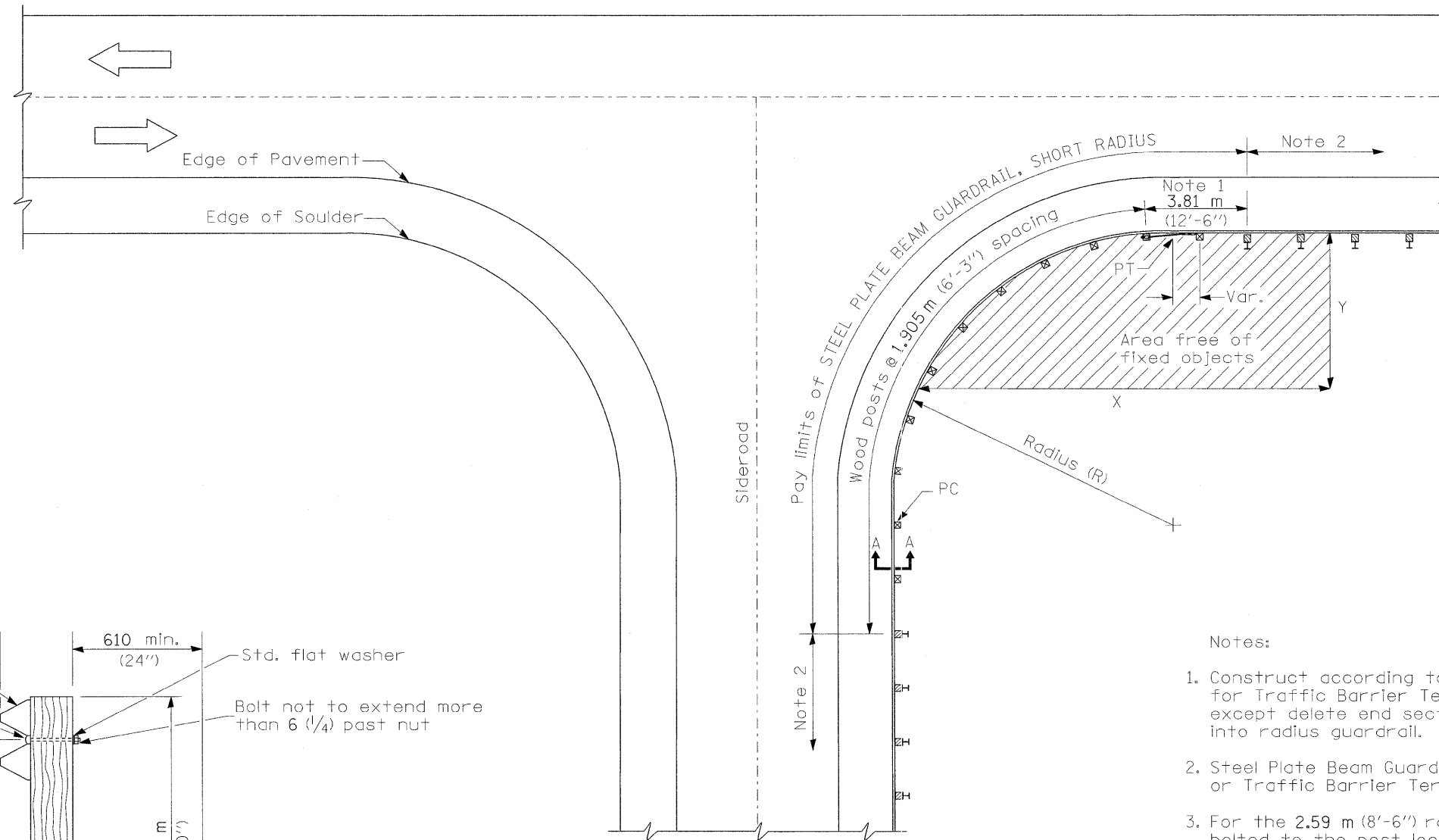
DESIGNED -
DRAWN -
CHECKED -
DATE -

REVISED -
REVISED -
REVISED -
REVISED -

SCALE: SHEET NO. OF SHEETS STA. TO STA.

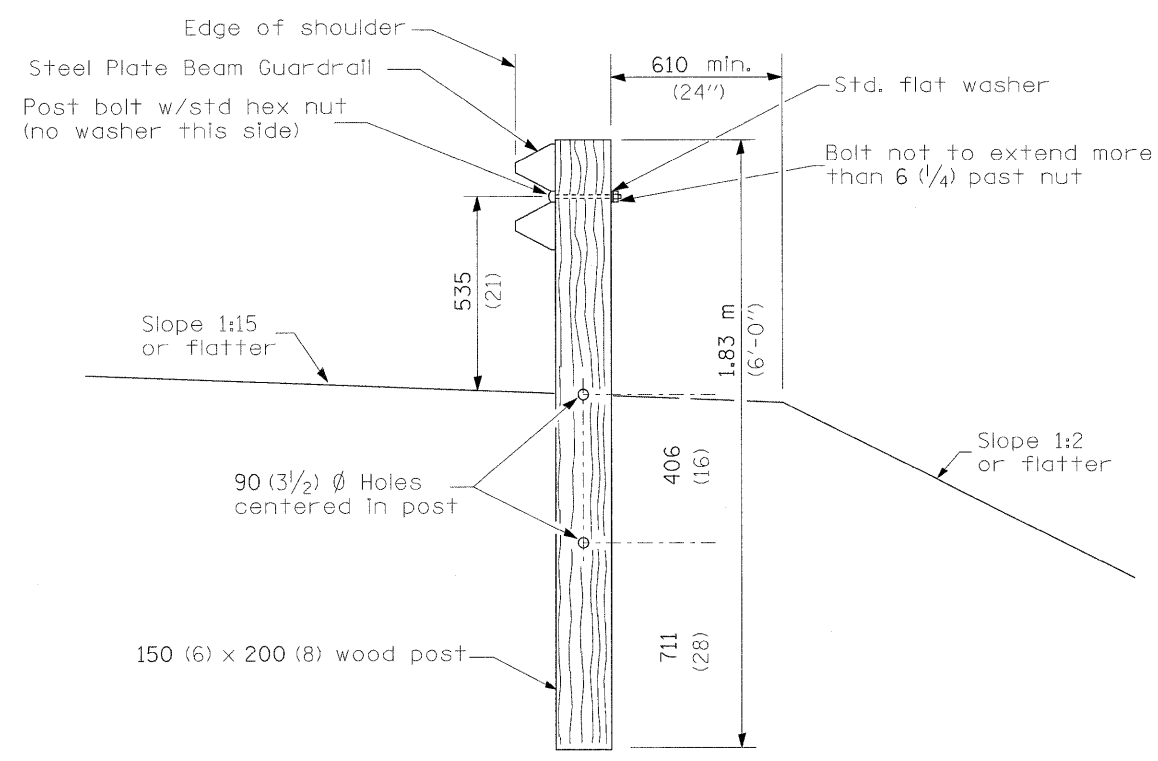
F.A. RTE. SECTION COUNTY TOTAL SHEETS SHEET NO.
D9 SAFETY FY08-3 ** 16 11
CONTRACT NO. 78042

FED. ROAD DIST. NO. ILLINOIS FED. AID PROJECT



- Notes:
- Construct according to Standard 631011 for Traffic Barrier Terminal Type 2, except delete end section and splice into radius guardrail.
 - Steel Plate Beam Guardrail Type A, Type B, or Traffic Barrier Terminal as specified.
 - For the 2.59 m (8'-6") radius, the rail is not bolted to the post located at the midpoint of the curve.

PLAN



SECTION A-A

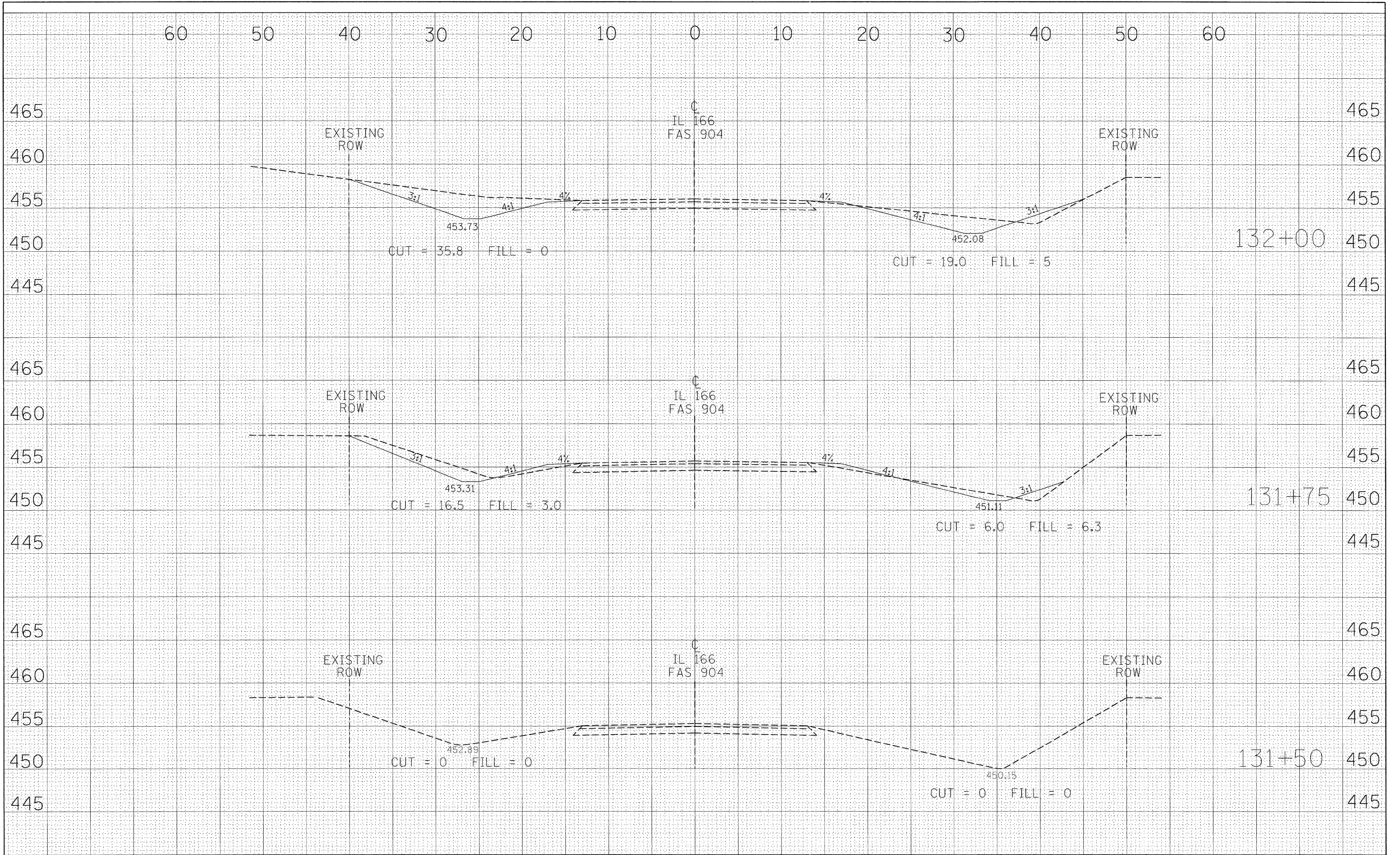
INSTALLATION CHARACTERISTICS PER DESIGN RADIUS (R)			
R	NO. OF WOOD POSTS	X	Y
2.59 (8'-6")	5 (Note 3)	7.6 m (25')	4.6 (15')
5.18 (17'-0")	6	9.1 m (30')	4.6 (15')
7.77 (25'-6")	8	12.2 m (40')	6.1 (20')
10.67 (35'-0")	11	15.2 m (50')	6.1 (20')

GENERAL NOTES

All slope ratios are expressed as units of vertical displacement to units of horizontal displacement (V:H).
 All dimensions are in millimeters (inches) unless otherwise shown.

FINAL SURVEY PLOTTED DATE
 SURVEY PLOTTED DATE
 NOTE BOOK NO.
 AREAS CHECKED

ORIGINAL SURVEY PLOTTED DATE
 SURVEY PLOTTED DATE
 NOTE BOOK NO.
 AREAS CHECKED



FILE NAME =
 c:\projects\d903607\d903607p1.m32

USER NAME = russellof
 PLOT SCALE = 5.00' / IN.
 PLOT DATE = 11/21/2007

DESIGNED -
 DRAWN -
 CHECKED -
 DATE -

REVISED -
 REVISED -
 REVISED -
 REVISED -

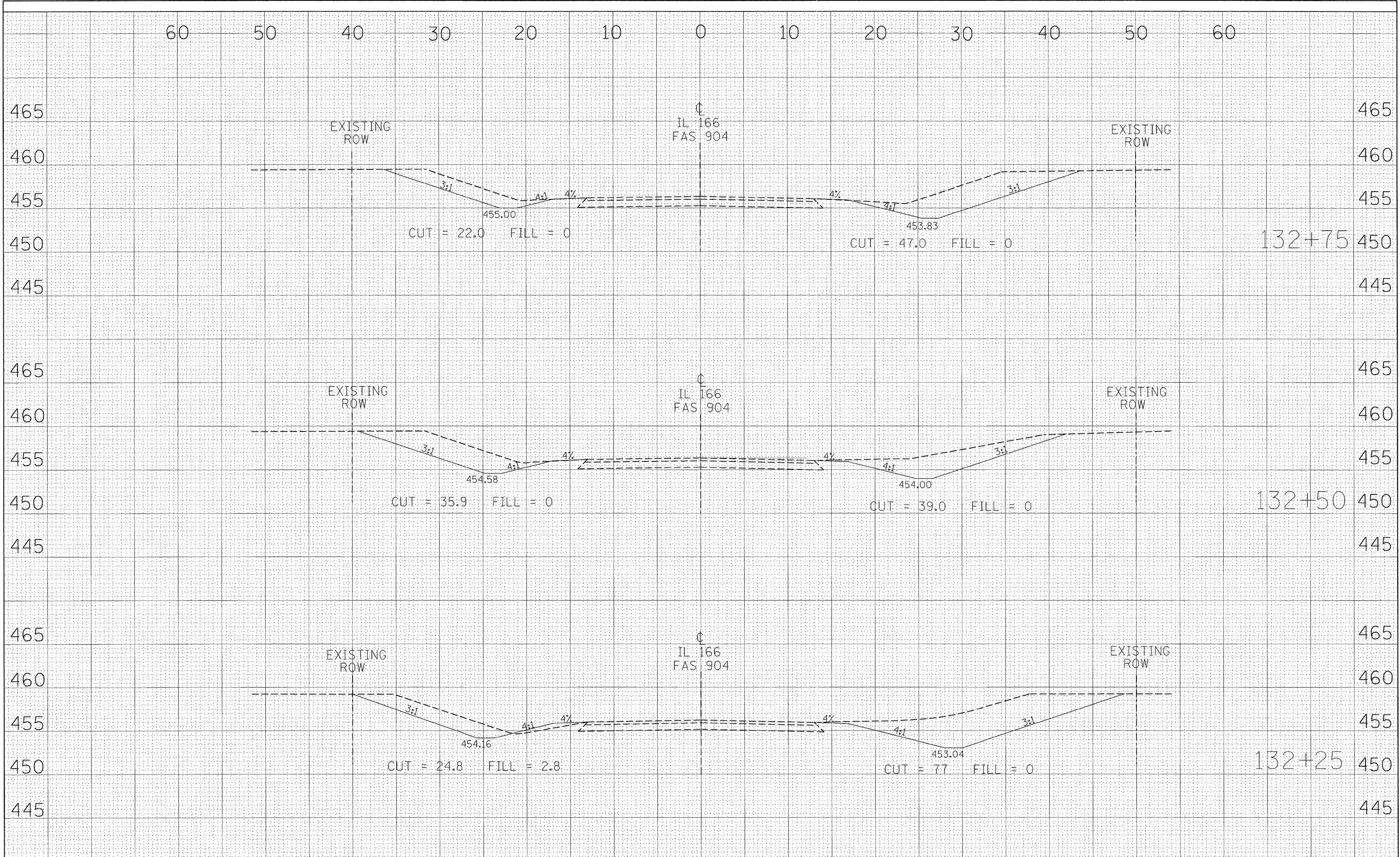
**STATE OF ILLINOIS
 DEPARTMENT OF TRANSPORTATION**

CROSS SECTIONS - IL 166
 SCALE: SHEET NO. OF SHEETS STA. 131+50 TO STA. 132+00

F.A. RTE.	SECTION	COUNTY	TOTAL SHEETS	SHEET NO.
*	D9 SAFETY FY08-3	*	16	13
FED. ROAD DIST. NO. ILLINOIS FED. AID PROJECT			CONTRACT NO. 78042	

DATE _____ BY _____
 SURVEYED _____ PLOTTED _____
 SURVEY BOOK _____ NOTE DATE _____
 NO. _____ AREAS CHECKED _____

DATE _____ BY _____
 SURVEYED _____ PLOTTED _____
 SURVEY BOOK _____ NOTE DATE _____
 NO. _____ AREAS CHECKED _____



FILE NAME = c:\projects\d903807\d903807p1.m32

USER NAME = russellcf
 DESIGNED -
 DRAWN -
 CHECKED -
 DATE -
 REVISED -
 REVISED -
 REVISED -
 REVISED -

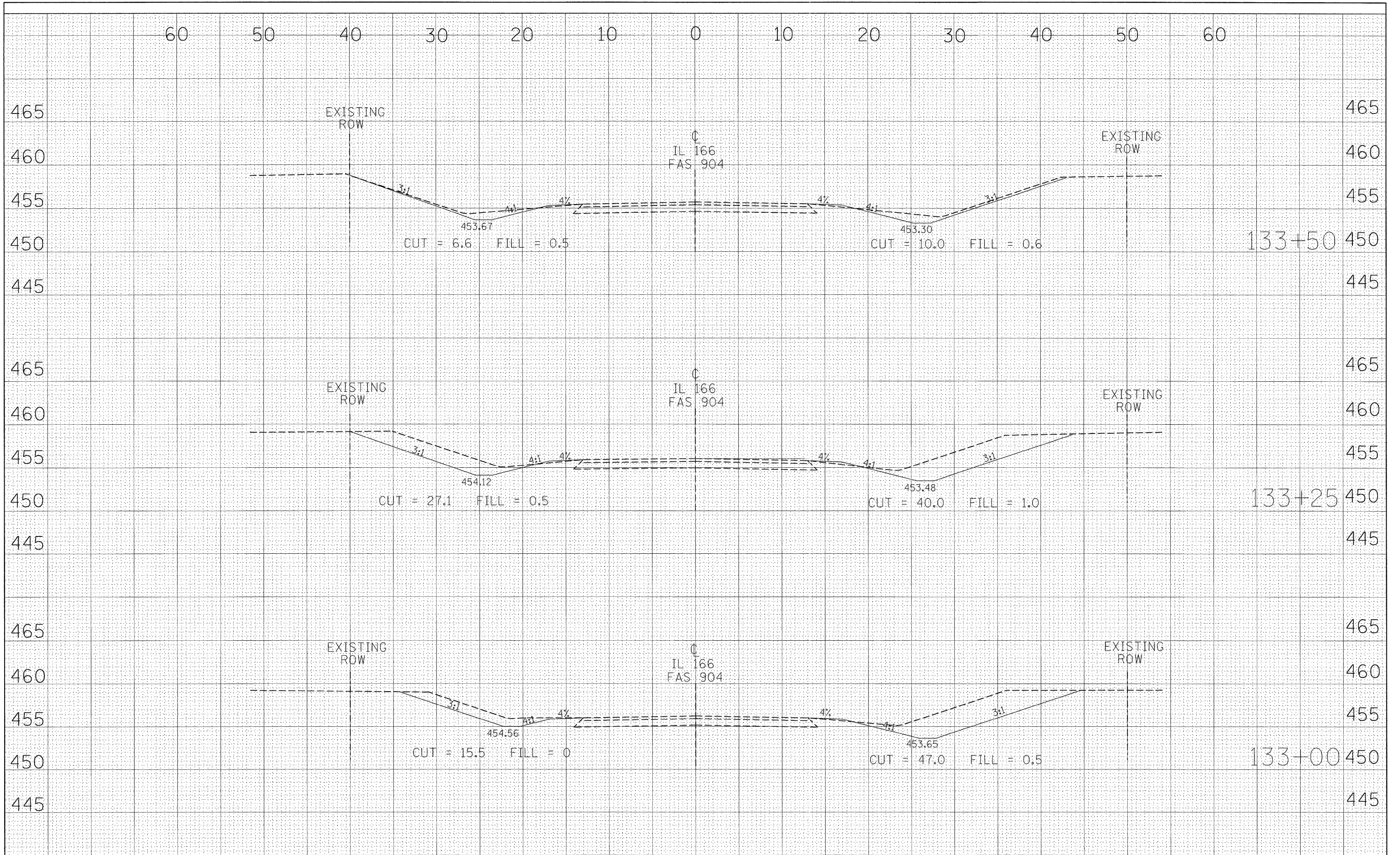
STATE OF ILLINOIS
DEPARTMENT OF TRANSPORTATION

CROSS SECTIONS - IL 166
 SCALE: SHEET NO. OF SHEETS STA. 132+25 TO STA. 132+75

F.A. RTE.	SECTION	COUNTY	TOTAL SHEETS	SHEET NO.
•	D9 SAFETY FY08-3	•	16	14
CONTRACT NO. 78042				
FED. ROAD DIST. NO. [ILLINOIS] FED. AID PROJECT				

DATE _____
 BY _____
 SURVEYED _____
 PLOTTED _____
 TEMPLATE _____
 NOTE BOOK _____
 AREAS CHECKED _____
 NO. _____

DATE _____
 BY _____
 SURVEYED _____
 PLOTTED _____
 TEMPLATE _____
 NOTE BOOK _____
 AREAS CHECKED _____
 NO. _____



FILE NAME =
 c:\projects\d903807\d903807p1.m32

USER NAME = russellcf
 DESIGNED -
 DRAWN -
 CHECKED -
 DATE -
 REVISED -
 REVISED -
 REVISED -
 REVISED -

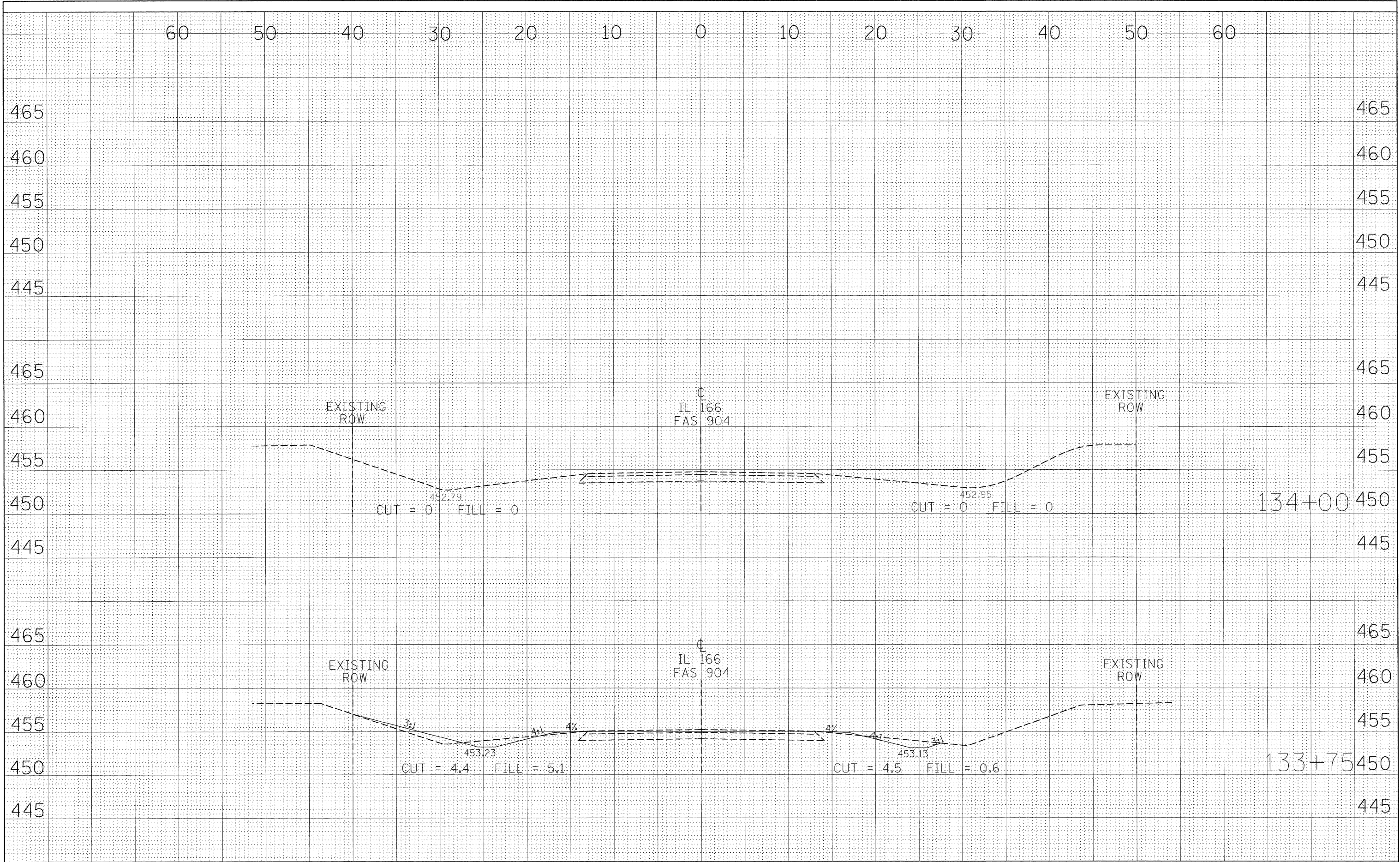
STATE OF ILLINOIS
DEPARTMENT OF TRANSPORTATION

CROSS SECTIONS - IL 166
 SCALE: _____ SHEET NO. _____ OF _____ SHEETS STA. 133+00 TO STA. 133+50

F.A. RTE.	SECTION	COUNTY	TOTAL SHEETS	SHEET NO.
•	D9 SAFETY FY08-3	•	16	15
CONTRACT NO. 78042				
FED. ROAD DIST. NO. [ILLINOIS] FED. AID PROJECT				

DATE	
BY	
FINAL SURVEY	
SURVEYED	
PLOTTED	
NOTE BOOK	
TEMPLATE	
AREAS CHECKED	
NO.	

DATE	
BY	
ORIGINAL SURVEY	
SURVEYED	
PLOTTED	
NOTE BOOK	
TEMPLATE	
AREAS CHECKED	
NO.	



FILE NAME = c:\projects\903807\903807p1.m32	USER NAME = russellof	DESIGNED - DRAWN -	REVISED - REVISED -	STATE OF ILLINOIS DEPARTMENT OF TRANSPORTATION	CROSS SECTIONS - IL 166				F.A. RTE. •	SECTION D9 SAFETY FY08-3	COUNTY •	TOTAL SHEETS 16	SHEET NO. 16
	PLOT SCALE = 5.00' / IN.	CHECKED -	REVISED -		SCALE:	SHEET NO.	OF	SHEETS	STA. 133+75	TO STA. 134+00	CONTRACT NO. 78042		
	PLOT DATE = 11/21/2007	DATE -	REVISED -		FED. ROAD DIST. NO. ILLINOIS FED. AID PROJECT								