

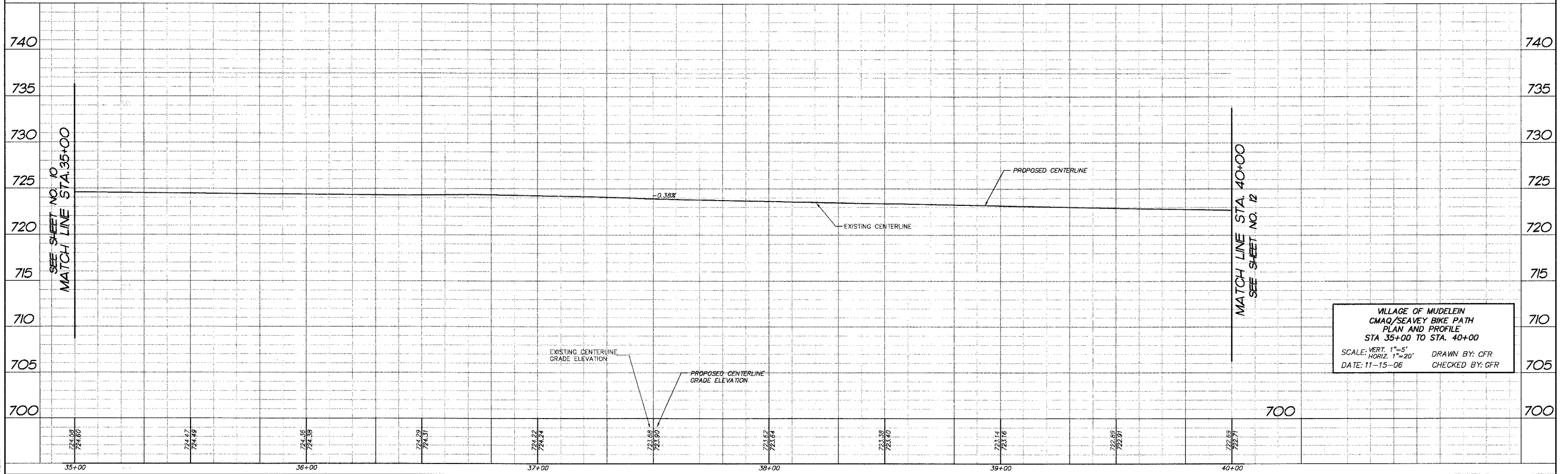
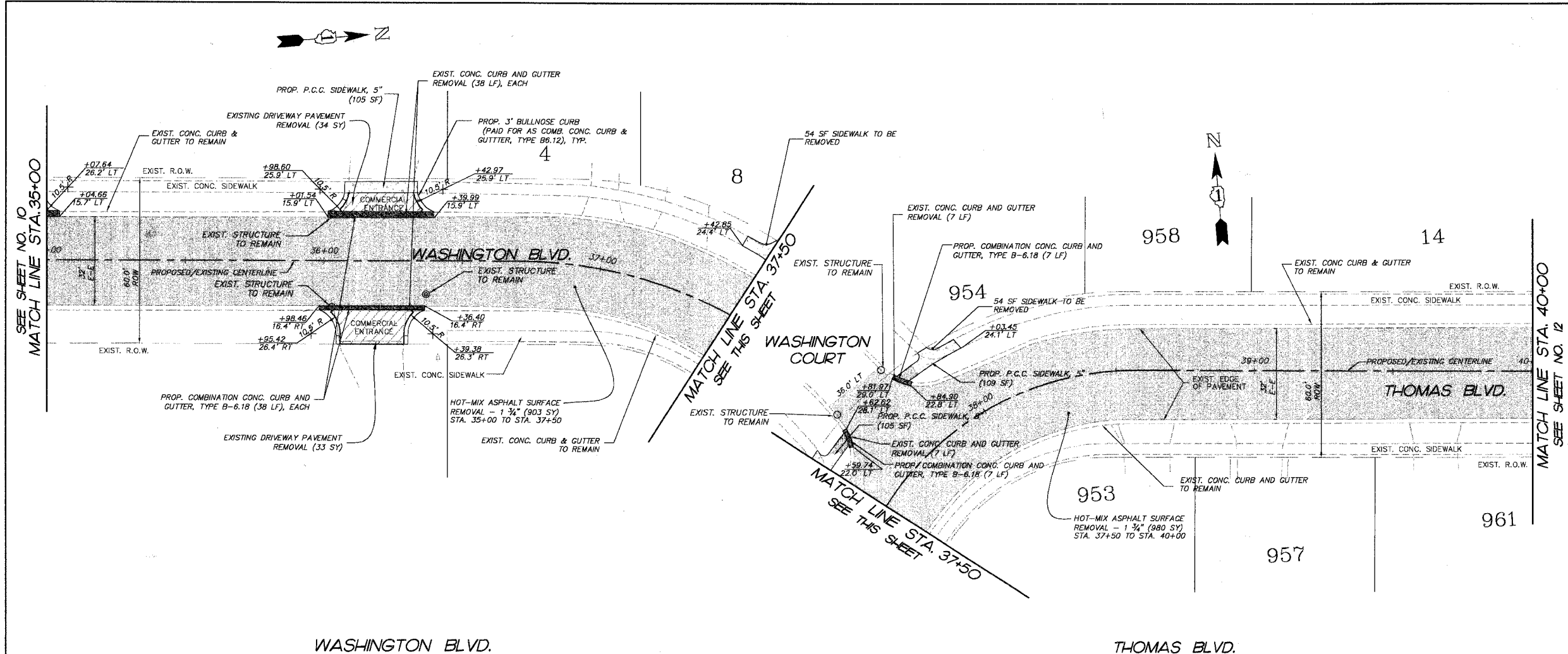
F.A.P. RTE.	SECTION	COUNTY	TOTAL SHEETS	SHEET NO.
	04-00075-00-BT	LAKE	42	11
STA. 35+00		TO STA. 40+00		
FED. ROAD DIST. NO. 1		ILLINOIS		HIGHWAY PROJECT
CONTRACT NO. 83890				

LEGEND:

- DENOTES HOT-MIX ASPHALT SURFACE REMOVAL - 1 3/4" REPLACE WITH HOT-MIX ASPHALT SURFACE COURSE, MIX "D", NS0 - 2" (SEE TYPICAL SECTION)
- DENOTES PROPOSED BIT. DRIVEWAY PAVEMENT, 12" - 4" - HOT-MIX ASPHALT SURFACE COURSE, MIXTURE D, NS0 - 8" - SUB-BASE GRANULAR MATERIAL, TYPE B
- DENOTES AREA OF COMBINATION CURB AND GUTTER REMOVAL
- DENOTES AREA OF DEPRESSED CURB
- DENOTES PROPOSED SIDEWALK RAMP WITH DETECTABLE WARNINGS

DATE	BY

FINAL SURVEY PLOTTED
 SURVEY NOTE BOOK NO.
 TEMPLATE AREAS CHECKED



VILLAGE OF MUDELEIN
 CMAQ/SEAVEY BIKE PATH
 PLAN AND PROFILE
 STA 35+00 TO STA. 40+00
 SCALE: VERT. 1"=5' HORIZ. 1"=20'
 DATE: 11-15-06 DRAWN BY: CFR
 CHECKED BY: GFR