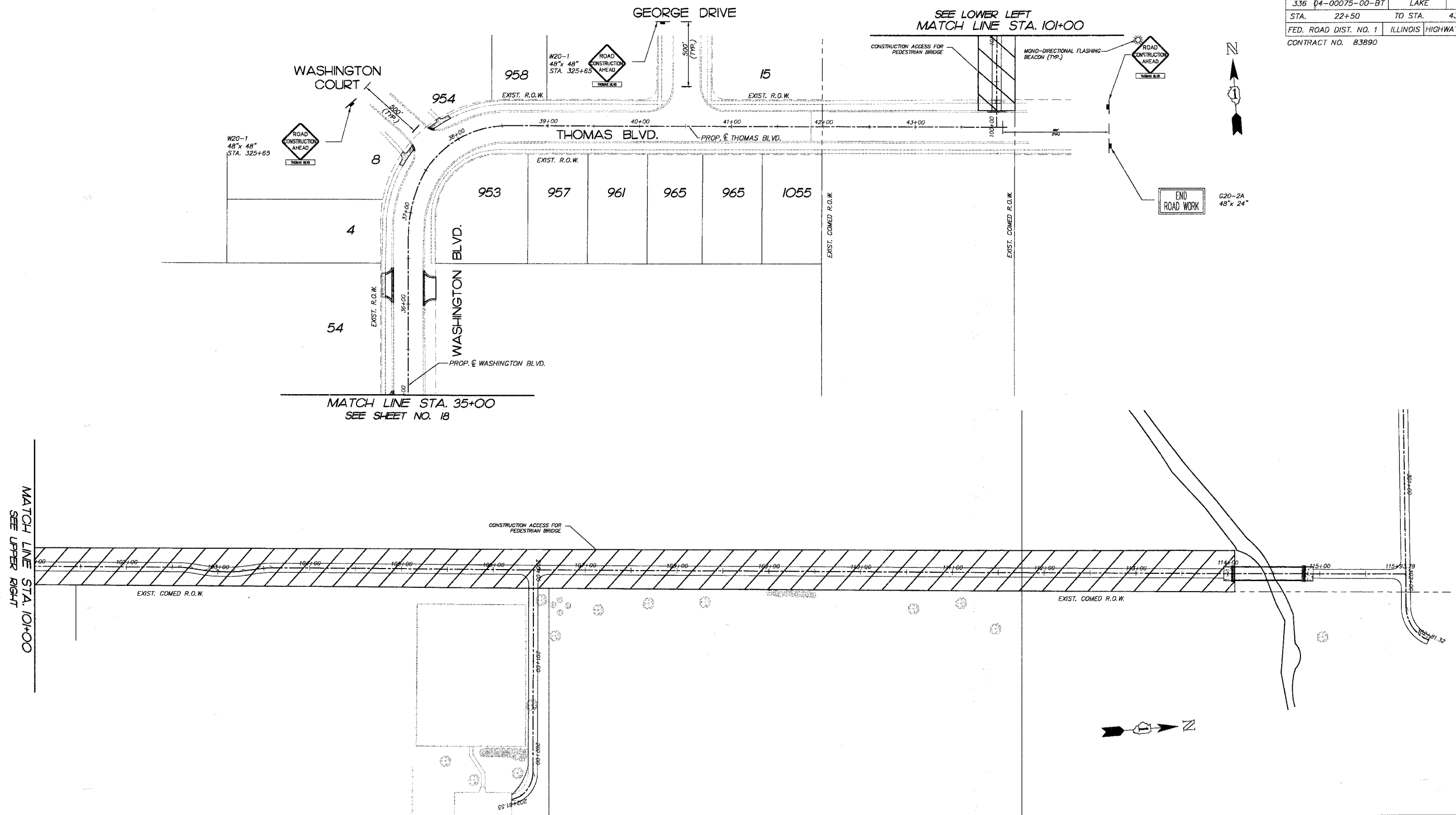


F.A.P. R.T.E.	SECTION	COUNTY	TOTAL SHEETS	SHEET NO.
336	04-00075-00-BT	LAKE	42	19
STA.	22+50	TO STA.	43+00	
FED. ROAD DIST. NO. 1		ILLINOIS	HIGHWAY PROJECT	
CONTRACT NO. 83890				



MATCH LINE STA. 101+00  
SEE UPPER RIGHT

REVISIONS	
NO.	DATE
7.	
6.	
5.	
4.	
3.	
2.	
1.	12-28-07

**SMITH ENGINEERING CONSULTANTS, INC.**  
 CIVIL/STRUCTURAL ENGINEERS AND SURVEYORS  
 4500 PRIME PARKWAY, SUITE 201  
 MCKENRY, ILLINOIS 60050  
 PH: 815-386-1773 FAX: 815-386-1781  
 www.smithengineering.com E-MAIL: see@smithengineering.com  
 MCKENRY HUNTLEY FORTVILLE  
 ILLINOIS PROFESSIONAL DESIGN FIRM # 184-000108

ILLINOIS DEPARTMENT OF TRANSPORTATION  
 VILLAGE OF MUNDELEIN  
 CMAQ/SEAVEY BIKE PATH  
 SUGGESTED MAINTENANCE OF  
 TRAFFIC PLAN  
 STA. 35+00 TO STA. 43+00 &  
 STA. 101+00 TO 114+00  
 SCALE: 1" = 50'  
 DATE 11-15-06  
 DRAWN BY BDH  
 CHECKED BY GFR

PLOT FILE: STANDARD  
 COMP. FILE: 050460-627.dwg