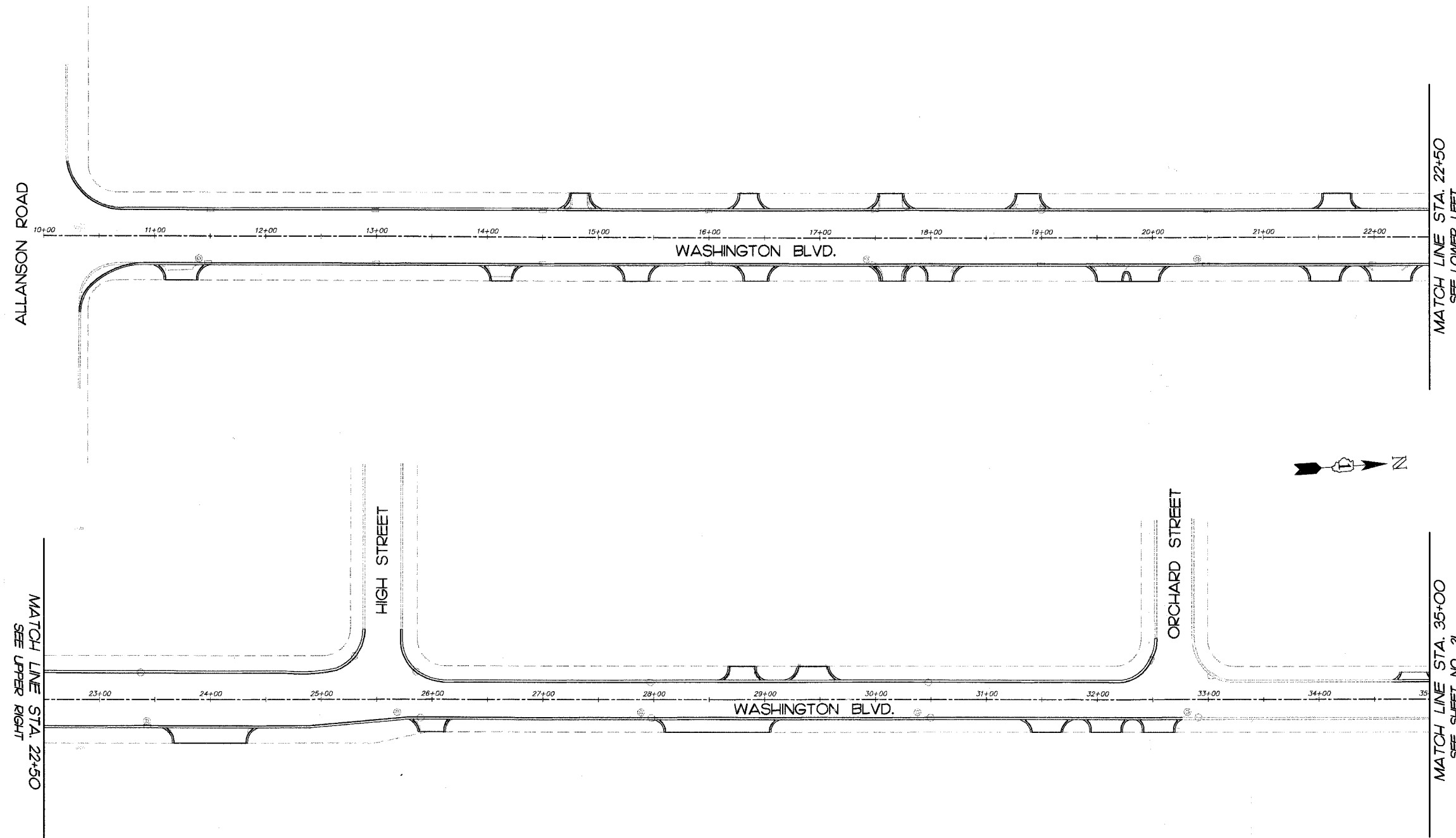


F.A.P. RTE.	SECTION	COUNTY	TOTAL SHEETS	SHEET NO.
336	04-00075-00-BT	LAKE	42	20
STA.	10+00	TO STA.	35+00	
FED. ROAD DIST. NO. 1		ILLINOIS HIGHWAY PROJECT		
CONTRACT NO. 83890				



EROSION CONTROL NOTES:

A. SOIL DISTURBANCE SHALL BE CONDUCTED IN SUCH A MANNER AS TO MINIMIZE EROSION. SOIL STABILIZATION MEASURES SHALL CONSIDER THE TIME OF YEAR, SITE CONDITIONS, AND THE USE OF TEMPORARY OR PERMANENT MEASURES.

B. SOIL EROSION AND SEDIMENT CONTROL FEATURES SHALL BE CONSTRUCTED PRIOR TO THE COMMENCEMENT OF HYDROLOGIC DISTURBANCE OF UPLAND AREAS.

C. DISTURBED AREAS SHALL BE STABILIZED WITH TEMPORARY OR PERMANENT MEASURES WITHIN 14 CALENDAR DAYS OF THE END OF ACTIVE HYDROLOGIC DISTURBANCE OR REDISTURBANCE.

D. AREAS OR EMBANKMENTS HAVING SLOPES GREATER THAN OR EQUAL TO 3:1V, AND APPROVED BY THE ENFORCEMENT OFFICER, SHALL BE STABILIZED WITH SOD, MAT, OR BLANKET IN COMBINATION WITH SEEDING.

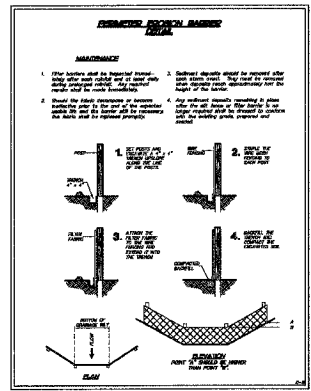
E. ALL STORM SEWERS THAT ARE OR WILL BE FUNCTIONING DURING CONSTRUCTION SHALL BE PROTECTED, BY AN APPROPRIATE SEDIMENT CONTROL MEASURE.

F. ALL TEMPORARY EROSION AND SEDIMENT CONTROL MEASURES SHALL BE REMOVED WITHIN 30 DAYS AFTER FINAL SITE STABILIZATION IS ACHIEVED OR AFTER THE TEMPORARY MEASURES ARE NO LONGER NEEDED.

G. ALL TEMPORARY AND PERMANENT EROSION CONTROL MEASURES MUST BE MAINTAINED AND REPAIRED AS NEEDED.

H. SOIL STOCKPILES SHALL NOT BE LOCATED IN A FLOOD PRONE AREA OR A DESIGNATED BUFFER PROTECTING WATERS OF THE UNITED STATES OR ISOLATED WATERS OF LAKE COUNTY.

I. IF DEWATERING SERVICES ARE USED, ADJOINING PROPERTIES AND DISCHARGE LOCATIONS SHALL BE PROTECTED FROM EROSION. DISCHARGES SHALL BE ROUTED THROUGH AN EFFECTIVE SEDIMENT CONTROL MEASURE (e.g. SEDIMENT TRAP, SEDIMENT BASIN, OR OTHER APPROPRIATE MEASURE).



REVISIONS		
NO.	NAME	DATE
7.		
6.		
5.		
4.		
3.		
2.		
1.	BDH	12-28-07

SMITH ENGINEERING CONSULTANTS, INC.
 CIVIL/STRUCTURAL ENGINEERS AND SURVEYORS
 4900 PRIME PARKWAY, SUITE 201
 MOHENTY, ILLINOIS 60050
 PH: 616-386-1774 FAX: 616-386-1781
 www.smithengineering.com E-MAIL: sec@smithengineering.com
 MOHENTY HUNTLEY YORKVILLE
 ILLINOIS PROFESSIONAL DESIGN FIRM # 184-000108

ILLINOIS DEPARTMENT OF TRANSPORTATION
 VILLAGE OF MUNDELEIN
 CMAQ/SEAVEY BIKE PATH
 EROSION CONTROL PLAN
 STA. 10+00 TO STA. 35+00

SCALE: 1" = 50'
 DATE 11-15-06
 DRAWN BY BDH
 CHECKED BY GFR

PLOT FILE: STANDARD
 VIEW: 20
 COMP. FILE: 050460-628.dwg