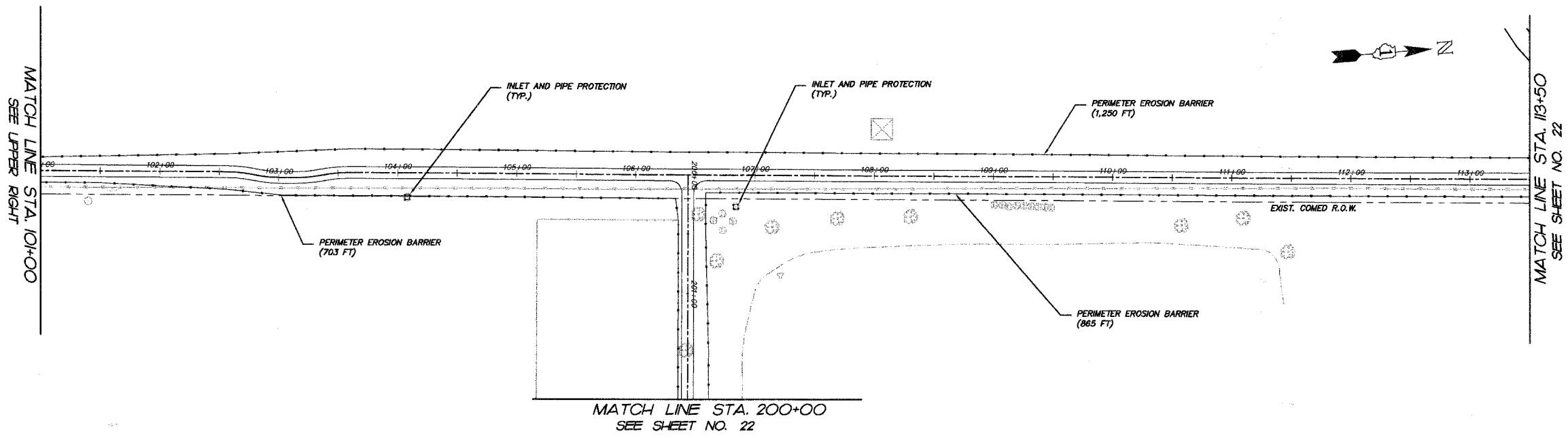
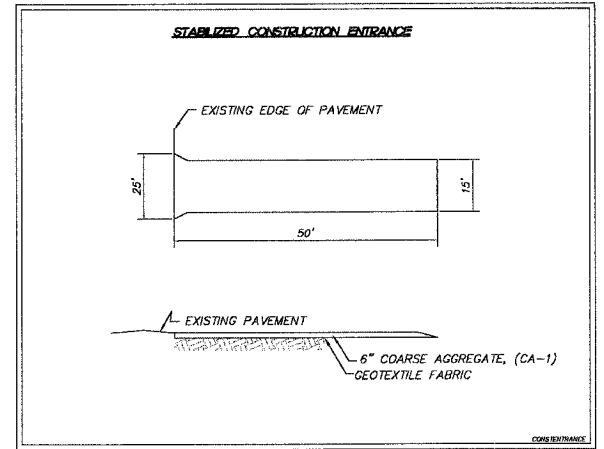
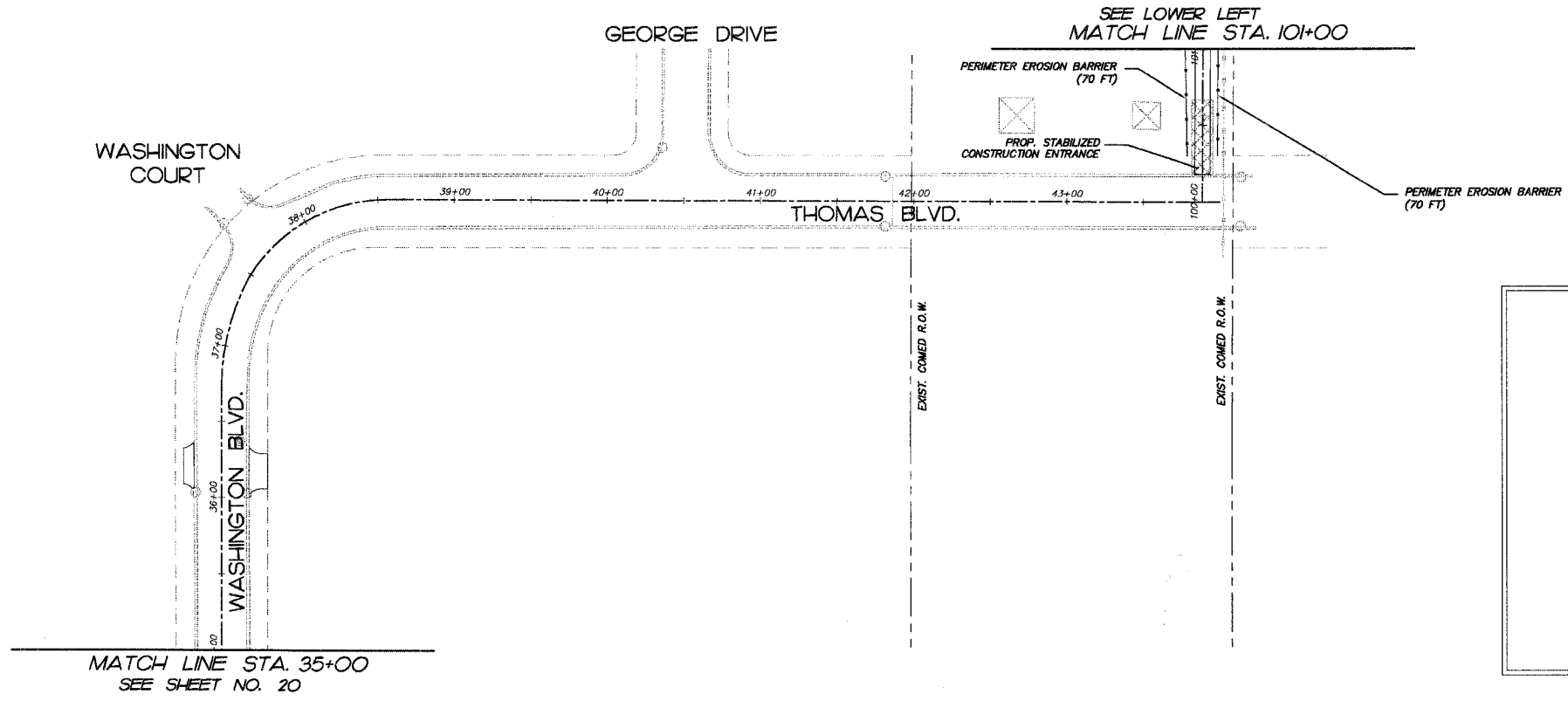


F.A.P. RTE.	SECTION	COUNTY	TOTAL SHEETS	SHEET NO.
336	D4-00075-00-BT	LAKE	42	21
STA.	35+00	TO STA.	113+50.3	
FED. ROAD DIST. NO. 1	ILLINOIS HIGHWAY PROJECT			
CONTRACT NO. 83890				



PLOT FILE: STANDARD  
 ME: W. J.  
 COUNTY: FILE: 050460-626.dwg

REVISIONS	
NO.	DATE
7.	
6.	
5.	
4.	
3.	
2.	
1.	BDH 12-28-07

**SMITH ENGINEERING CONSULTANTS, INC.**  
 CIVIL/STRUCTURAL ENGINEERS AND SURVEYORS  
 4500 PINE PARKWAY, SUITE 201  
 MCHENRY, ILLINOIS 60050  
 PH: 815-353-1776 FAX: 815-353-1781  
 www.smithengineering.com E-MAIL: sec@smithengineering.com  
 MCHENRY HUNTLEY YORKVILLE  
 ILLINOIS PROFESSIONAL DESIGN FIRM # 184-000108

ILLINOIS DEPARTMENT OF TRANSPORTATION  
 VILLAGE OF MUNDELEIN  
 CMAQ/SEAVEY BIKE PATH  
 EROSION CONTROL PLAN  
 STA. 35+00 TO 43+88.71 AND  
 STA. 100+00 TO 101+00  
 SCALE: 1" = 50'  
 DATE: 11-15-06  
 DRAWN BY: BDH  
 CHECKED BY: GFR