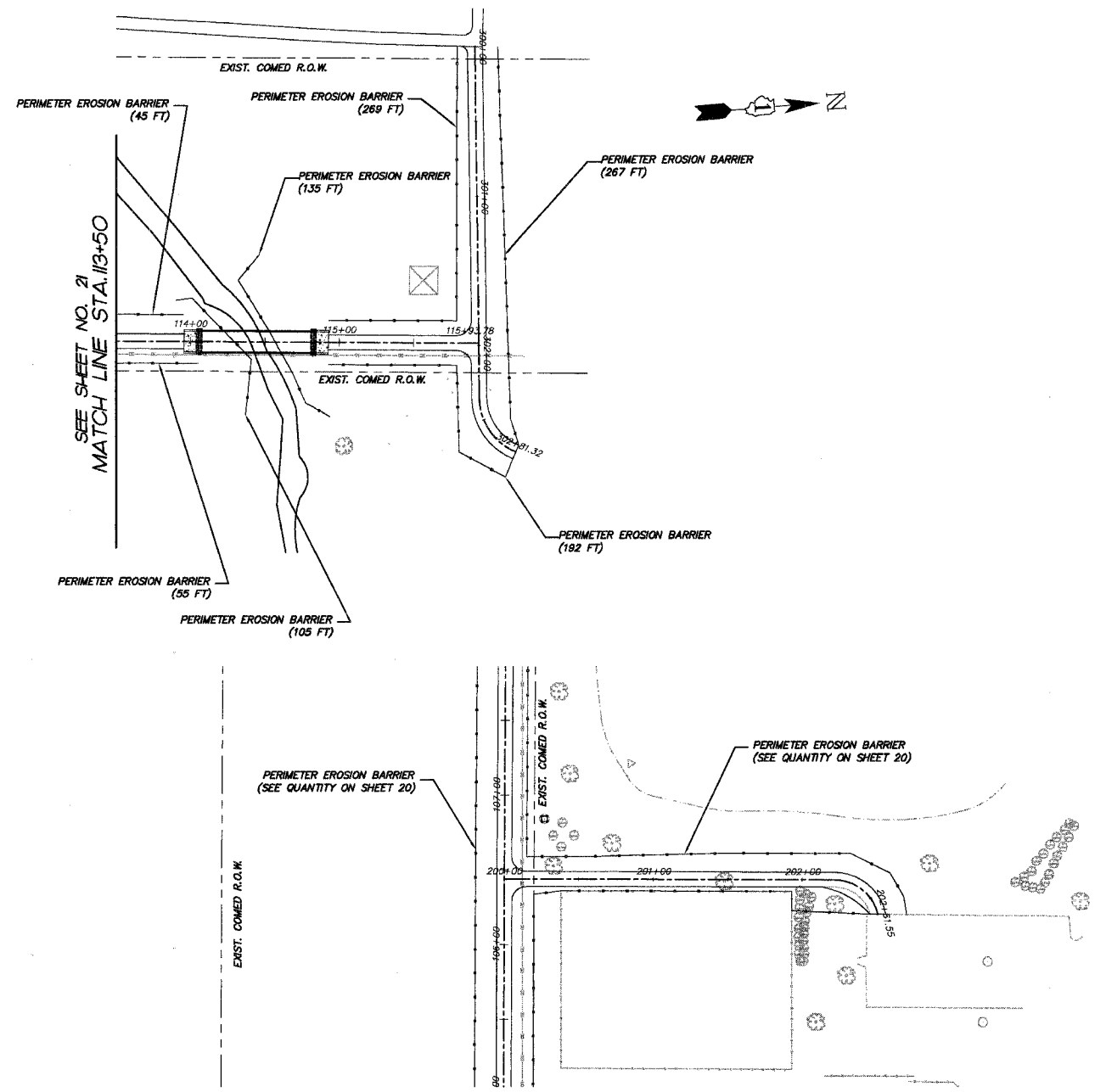


F.A.P. RTE.	SECTION	COUNTY	TOTAL SHEETS	SHEET NO.
336	04-00075-00-BT	LAKE	42	22
STA.	-	TO STA.	-	-
FED. ROAD DIST. NO. 1		ILLINOIS	HIGHWAY PROJECT	
CONTRACT NO. 83890				



PLOT FILE: STANDARD
 VERT: 22
 COMP. FILE: 050460-626.dwg

REVISIONS	
NAME	DATE
7.	
6.	
5.	
4.	
3.	
2.	
1.	

SMITH ENGINEERING CONSULTANTS, INC.
 CIVIL/STRUCTURAL ENGINEERS AND SURVEYORS
 4600 PRIME PARKWAY, SUITE 201
 MCHEENY, ILLINOIS 60050
 PH: 815-385-1778 FAX: 815-385-1781
 www.smithengineering.com E-MAIL: sec@smithengineering.com
 ■ MCHEENY ■ HUNTLEY ■ YORKVILLE
 ILLINOIS PROFESSIONAL DESIGN FIRM # 184-000108

ILLINOIS DEPARTMENT OF TRANSPORTATION
 VILLAGE OF MUNDELEIN
 CMAQ/SEAVEY BIKE PATH
 EROSION CONTROL PLAN
 STA. 113+50 TO 115+93.78,
 STA. 200+00 TO 202+61.55,
 AND STA. 300+00 TO 302+81+32
 SCALE: 1" = 50' DRAWN BY BDH
 DATE 11-15-06 CHECKED BY GFR