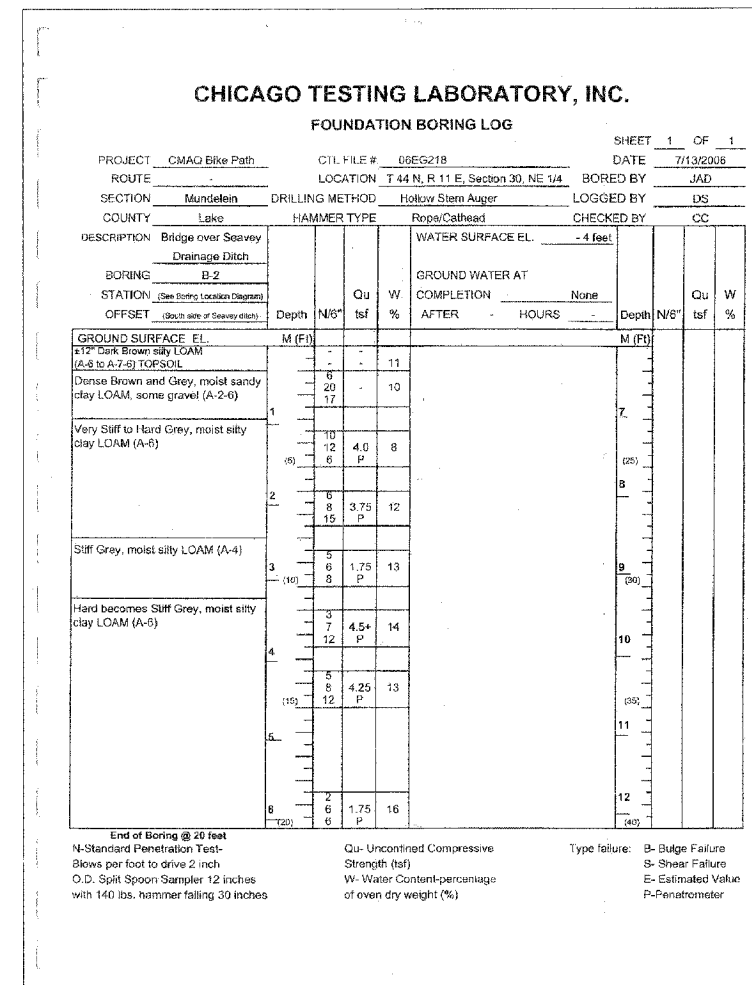
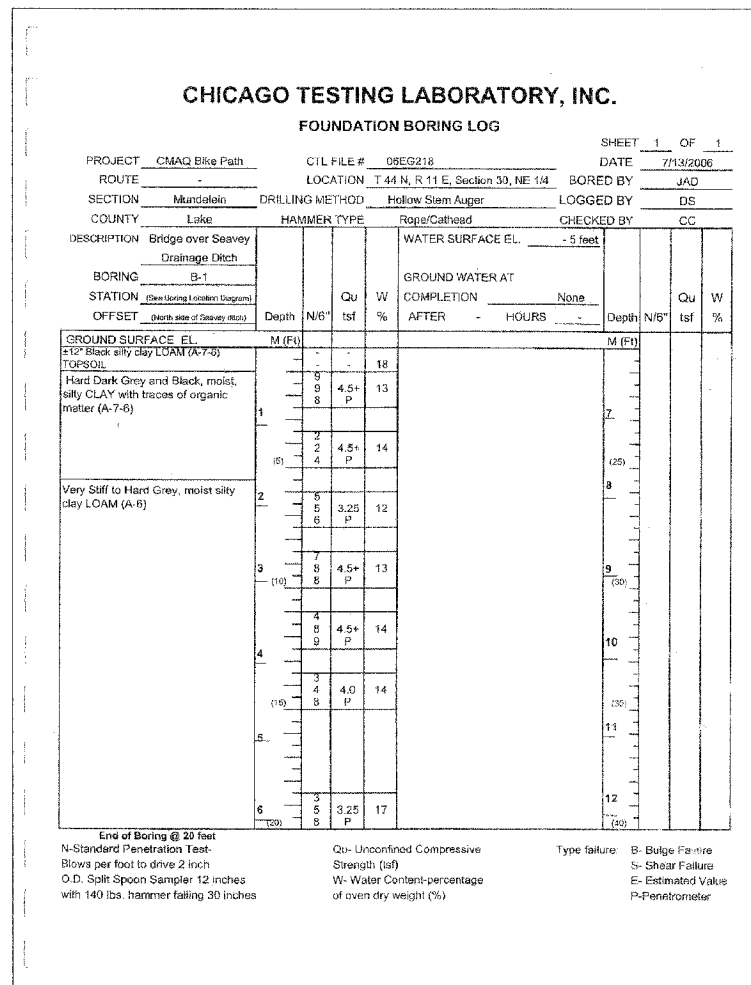


F.A.P. RTE.	SECTION	COUNTY	TOTAL SHEETS	SHEET NO.
336	04-00075-00-BT	LAKE	42	36
STA.	TO STA.			
FED. ROAD DIST. NO. 1		ILLINOIS	HIGHWAY PROJECT	
CONTRACT NO. 83890				



PLOT FILE: STANDARD
 NEW: 36
 COMP. FILE: 0504651-836.dwg

REVISIONS	
NO.	DATE
7.	
6.	
5.	
4.	
3.	
2.	
1.	

SMITH ENGINEERING CONSULTANTS, INC.
 CIVIL/STRUCTURAL ENGINEERS AND SURVEYORS
 4500 PRIME PARKWAY, SUITE 801
 MCHENRY, ILLINOIS 60050
 PH: 815-385-1778 FAX: 815-385-1781
 www.smithengineering.com E-MAIL: seo@smithengineering.com
 MCHENRY HUNTLEY YORKVILLE
 ILLINOIS PROFESSIONAL DESIGN FIRM # 184-000108

ILLINOIS DEPARTMENT OF TRANSPORTATION

VILLAGE OF MUNDELEIN
 CMAQ/SEAVEY BIKE PATH
 SOIL BORINGS

SCALE: "NTS" DRAWN BY: GFR
 DATE: 11-15-06 CHECKED BY: GFR