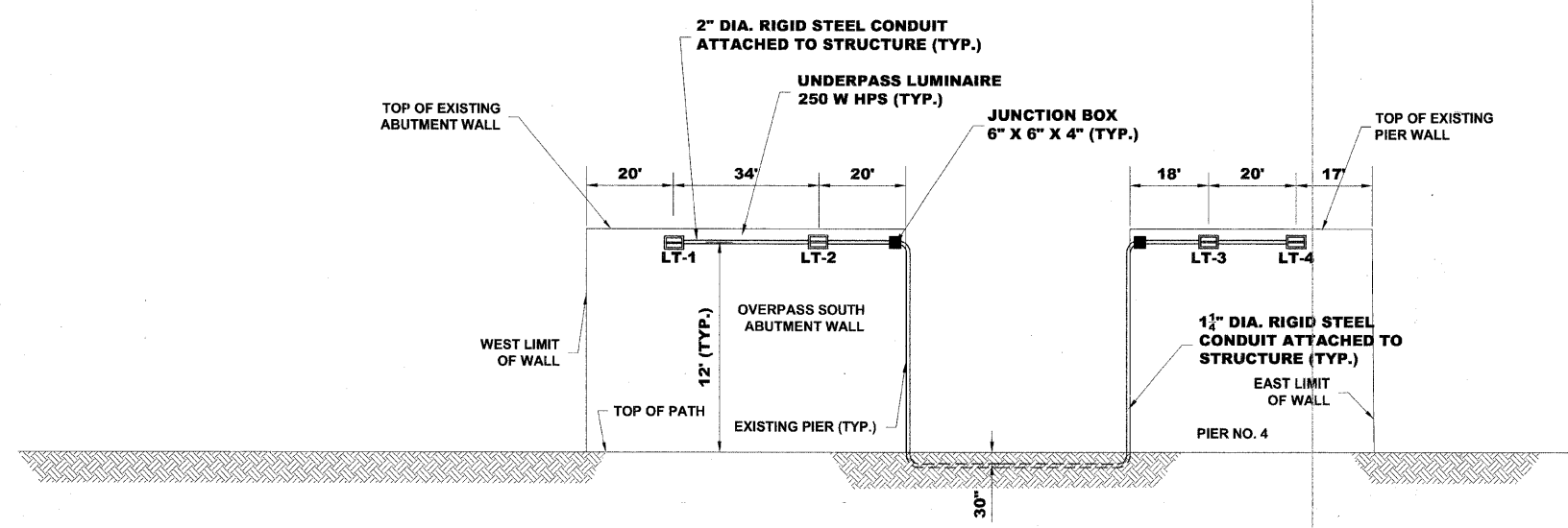


PLAN

AT OVERPASS NORTH ABUTMENT WALL AND NORTH SIDE OF PIER NO. 4



UNDERPASS LIGHTING DETAILS

AT OVERPASS SOUTH ABUTMENT WALL AND NORTH SIDE OF PIER NO. 4

Drawing file: W:\Projects\06033065 - Prairie Path Imp\Site Plan.dwg Jun 04, 2008 - 11:23am

	◆ Civil Engineers	9933 Roosevelt Road
	◆ Municipal Consultants	Westchester, Illinois 60154-2780
	◆ Established 1911	Phone: 708/865-0300
		Fax: 708/865-1212

**ILLINOIS PRAIRIE PATH IMPROVEMENTS
VILLAGE OF BELLWOOD, ILLINOIS**

**OVERPASS LIGHTING PLAN
& LIGHTING DETAILS**

ATB 12-19-07	SCALE: 1" = 20'	SHEET 6 OF 11
LEV 11-26-07	DRAWN BY: MK/LEV	
LEV 11-14-07	BOOK NO.: AERIAL	
PER IDOT REVIEW MK 5-22-07	DATE: 2-9-07	
REVISION:	E.H.E. NO.: 080-03-08580	