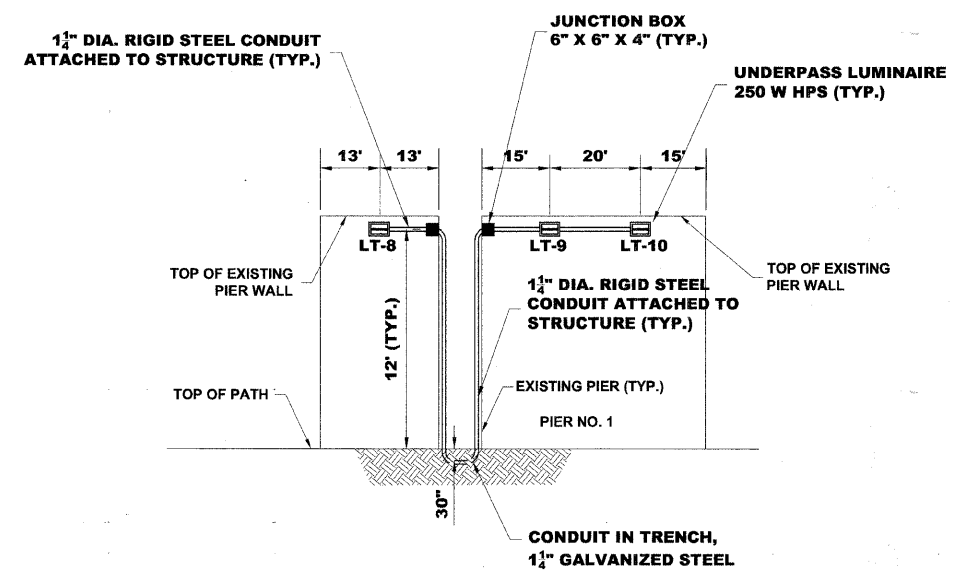


PLAN

AT NORTH SIDE OF OVERPASS WALL NO. 2 AND NORTH SIDE OF PIER NO. 1



UNDERPASS LIGHTING DETAILS

AT NORTH SIDE OF OVERPASS WALL NO. 2 AND NORTH SIDE OF PIER NO. 1

Drawing file: W:\Projects\06033085 - Prairie Path Imp\Site Plan.dwg Jan 04, 2006 - 11:22am

	◆ Civil Engineers	SCALE: 1"=50'
	◆ Municipal Consultants	9933 Roosevelt Road
	◆ Established 1911	Westchester, Illinois 60154-2780
		Phone: 708/865-0300
	Fax: 708/865-1212	

**ILLINOIS PRAIRIE PATH IMPROVEMENTS
VILLAGE OF BELLWOOD, ILLINOIS**

**OVERPASS LIGHTING PLAN
& LIGHTING DETAILS**

ATB 12-19-07	SCALE: 1" = 20'	8 / 11
LEV 11-26-07	DRAWN BY: MK/LEV	
LEV 11-14-07	BOOK NO.: AERIAL	
PER IDOT REVIEW MK 5-22-07	DATE: 2-9-07	
REVISION:	E.H.E. NO.: 090-03-08580	OF