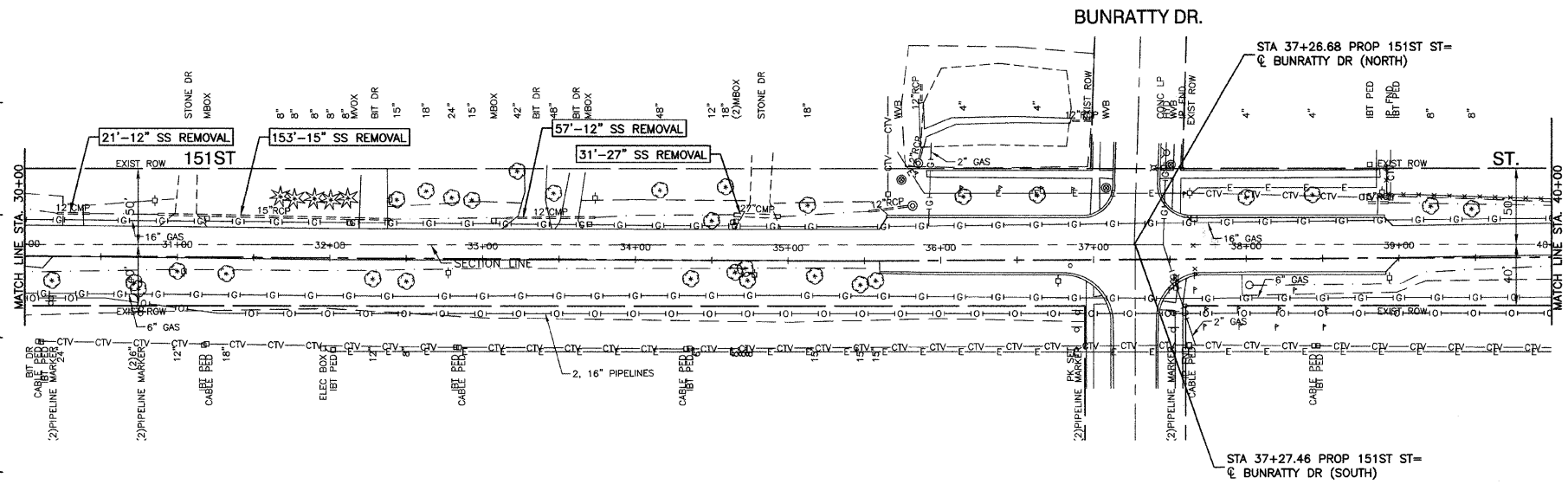


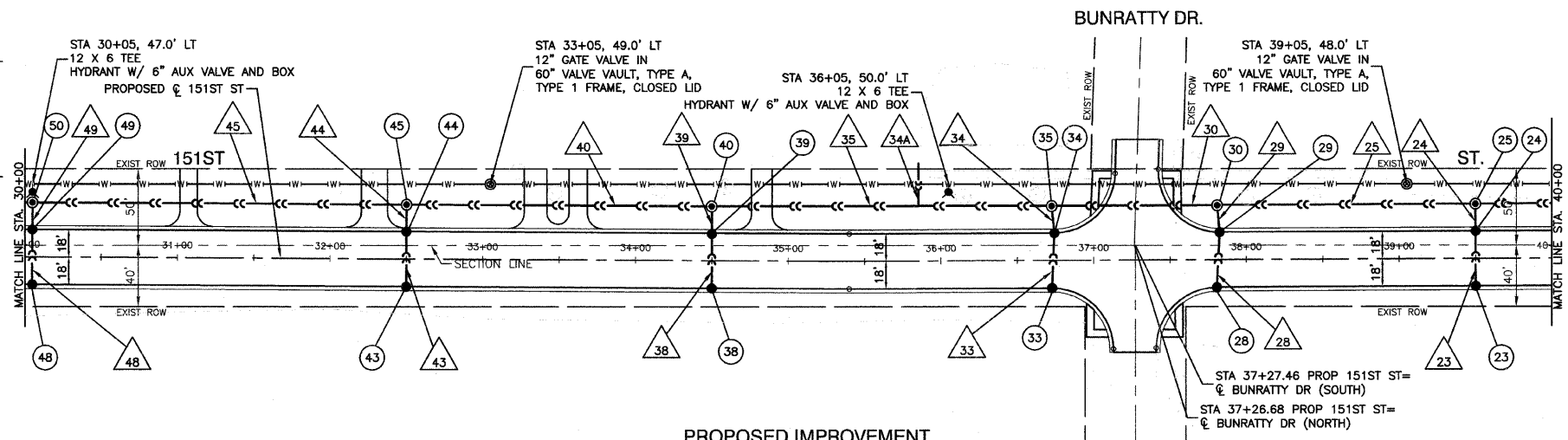
FAU. RE.	SECTION	COUNTY	TOTAL SHEETS	SHEET NO.
0285	01-00052-00-FP	WILL	71	26
STA. 30+00		TO STA. 40+00		
FED. ROAD DIST. NO. 1		ILLINOIS FED. AID PROJECT		

CONTRACT NO. 83956

23 STA 39+50, 18' RT CB TA 4' DIA T24 F&G RIM EL=697.41 N 12" INV=689.91	33 STA 36+73, 18' RT CB TA 4' DIA T24 F&G RIM EL=695.33 N 12" INV=686.94	43 STA 32+50, 18' RT CB TA 4' DIA T24 F&G RIM EL=690.41 N 12" INV=682.51
24 STA 39+50, 18' LT CB TA 4' DIA T24 F&G RIM EL=697.41 S 12" INV=688.29 N 12" INV=686.29	34 STA 36+74, 18' LT CB TA 4' DIA T24 F&G RIM EL=695.33 S 12" INV=685.32 N 12" INV=683.32	44 STA 32+50, 18' LT CB TA 4' DIA T24 F&G RIM EL=690.41 S 12" INV=680.89 N 12" INV=678.89
25 STA 39+50, 35.5' LT MH TA 5' DIA T1F+CL RIM EL=698.00 S 12" INV=685.50 E 24" INV=683.60 W 24" INV=683.50	35 STA 36+73, 35.5' LT MH TA 5' DIA T1F+CL RIM EL=696.40 S 12" INV=682.53 E 24" INV=680.63 W 24" INV=680.53	45 STA 32+50, 35.5' LT MH TA 5' DIA T1F+CL RIM EL=690.80 S 12" INV=678.10 E 24" INV=676.20 W 24" INV=676.10
28 STA 37+81, 10 RT CB TA 4' DIA T24 F&G RIM EL=696.15 N 12" INV=688.12	38 STA 34+50, 18' RT CB TA 4' DIA T24 F&G RIM EL=692.91 N 12" INV=684.62	48 STA 30+05, 18' RT CB TA 4' DIA T24 F&G RIM EL=685.65 N 12" INV=679.35
29 STA 37+83, 18' LT CB TA 4' DIA T24 F&G RIM EL=696.16 S 12" INV=686.50 N 12" INV=684.50	39 STA 34+50, 18' LT CB TA 4' DIA T24 F&G RIM EL=692.91 S 12" INV=683.00 N 12" INV=681.00	49 STA 30+05, 18' LT CB TA 4' DIA T24 F&G RIM EL=685.65 S 12" INV=677.73 N 12" INV=675.73
30 STA 37+81, 36' LT MH TA 5' DIA T1F+CL RIM EL=696.50 S 12" INV=683.71 E 24" INV=681.81 W 24" INV=681.71	40 STA 34+50, 35.5' LT MH TA 5' DIA T1F+CL RIM EL=693.50 S 12" INV=680.20 E 24" INV=678.30 W 24" INV=678.20	50 STA 30+05, 35.5' LT MH TA 5' DIA T1F+CL RIM EL=686.30 S 12" INV=674.94 E 24" INV=673.04 W 24" INV=672.94



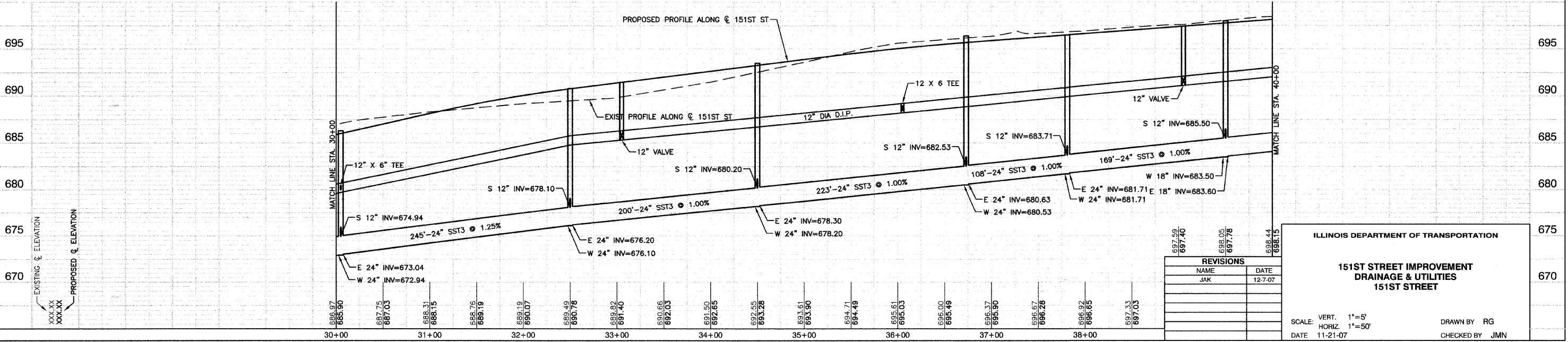
EXISTING CONDITION



PROPOSED IMPROVEMENT

23	36'-12" SST2 CL III @ 4.50% (30.08)
24	18'-12" SST3 CL IV @ 4.50% (4.3)
25	169'-24" SST3 CL IV @ 1.00% (0.0)
28	36'-12" SST2 CL III @ 4.50% (36.6)
29	18'-12" SST3 CL IV @ 4.50% (5.0)
30	108'-24" SST3 CL IV @ 1.00% (115.9)
33	36'-12" SST2 CL III @ 4.50% (38.2)
34	18'-12" SST2 CL IV @ 4.50% (5.1)
34A	28'-12" SST2 CL IV @ 1.00% (0)*
35	223'-24" SST3 CL IV @ 1.00% (45.3)
38	36'-12" SST2 CL III @ 4.50% (38.9)
39	18'-12" SST2 CL IV @ 4.50% (4.9)
40	200'-24" SST3 CL IV @ 1.0% (83.8)
43	36'-12" SST2 CL III @ 4.50% (36.6)
44	18'-12" SST3 CL IV @ 4.50% (4.7)
45	245'-24" SST3 CL IV @ 1.25% (48.2)
48	36'-12" SST2 CL IV @ 4.50% (27.4)
49	18'-12" SST2 CL IV @ 1.25% (0.0)

\* AS DIRECTED BY THE ENGINEER



REVISIONS	
NAME	DATE
JAK	12-7-07

ILLINOIS DEPARTMENT OF TRANSPORTATION

**151ST STREET IMPROVEMENT  
DRAINAGE & UTILITIES  
151ST STREET**

SCALE: VERT. 1"=5'  
HORIZ. 1"=50'

DATE 11-21-07 DRAWN BY RG CHECKED BY JMN