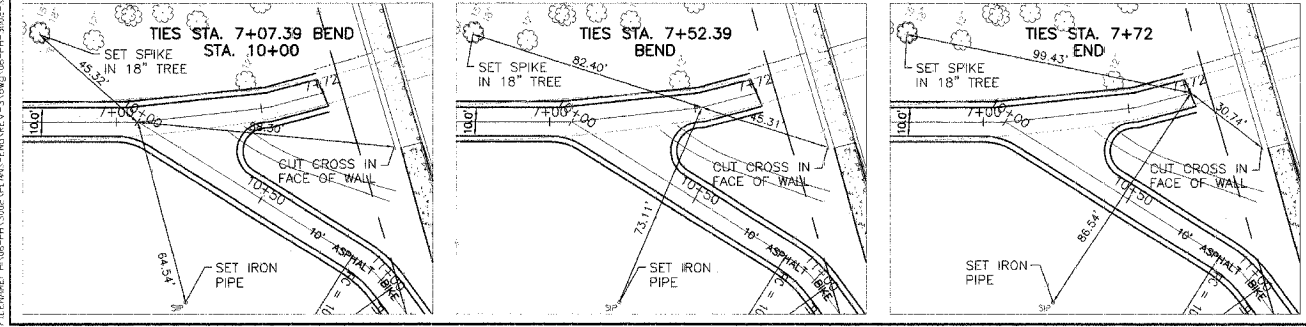
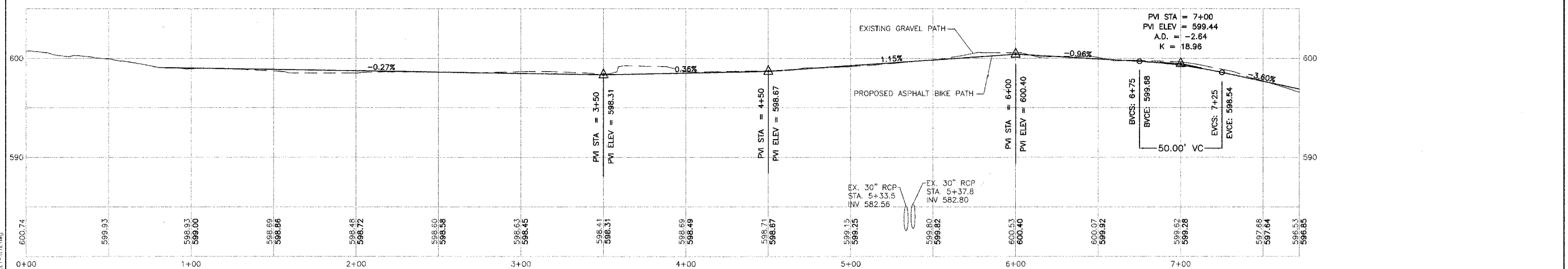
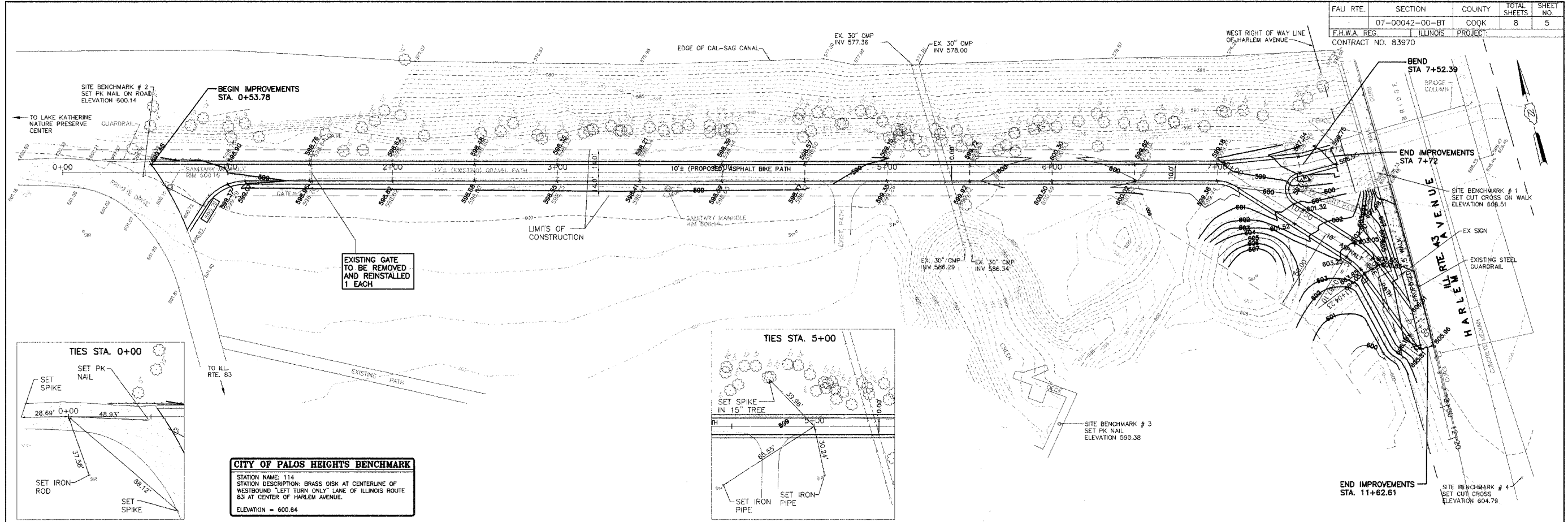


FAU RTE.	SECTION	COUNTY	TOTAL SHEETS	SHEET NO.
07-00042-00-BT	COOK	ILLINOIS	8	5
F.H.W.A. REG. PROJECT: ILLINOIS CONTRACT NO. 83970				



**MORRIS ENGINEERING, INC.**  
 5100 S. LINCOLN SUITE 100 LISLE, ILLINOIS 60532  
 PHONE: (630)271-0770 • WEBSITE: ECIVIL.COM  
 LOCATION: H:\06-PH\3002\PLANS-ENG\REV-3\DWG\06-PH-3002-SHEET-SITE.dwg  
 DRAWN BY: CJS DESIGN BY: RAC CHECKED BY: JUV  
 JOB NO.: 06-PH-3002 SCALE: 1"=30' H 1"=5' V

**HARLEM AVENUE BIKE PATH EXTENSION**

**PLAN & PROFILE**

DATE	REVISIONS	BY	SHEET
1 8-28-07	PER IDOT LETTER OF 7-31-07	RAC	<b>5</b> OF 8 SHEETS
2 10-01-07	PER IDOT LETTER OF 9-27-07	RAC	
3 10-19-07	PER IDOT BLR	RAC	
4			

PLOT DATE: 01-28-2007  
 C:\PLOT\06-PH\3002\PLANS-ENG\REV-3\DWG\06-PH-3002-SHEET-SITE.dwg