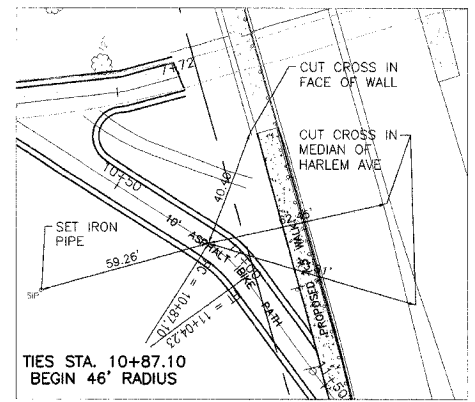
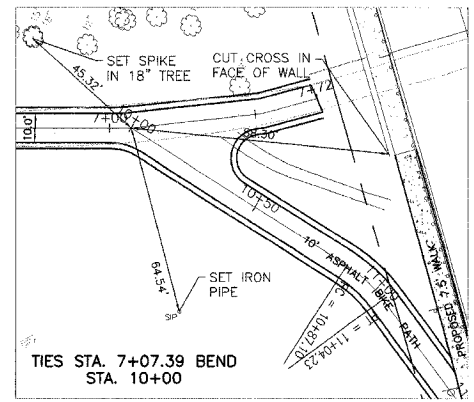
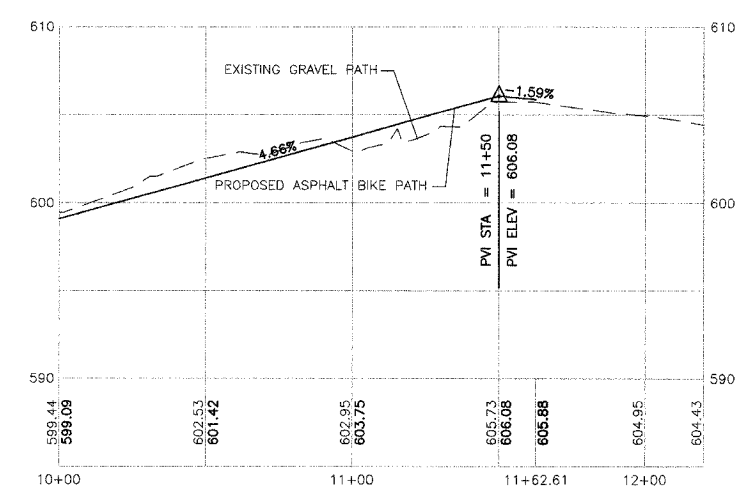
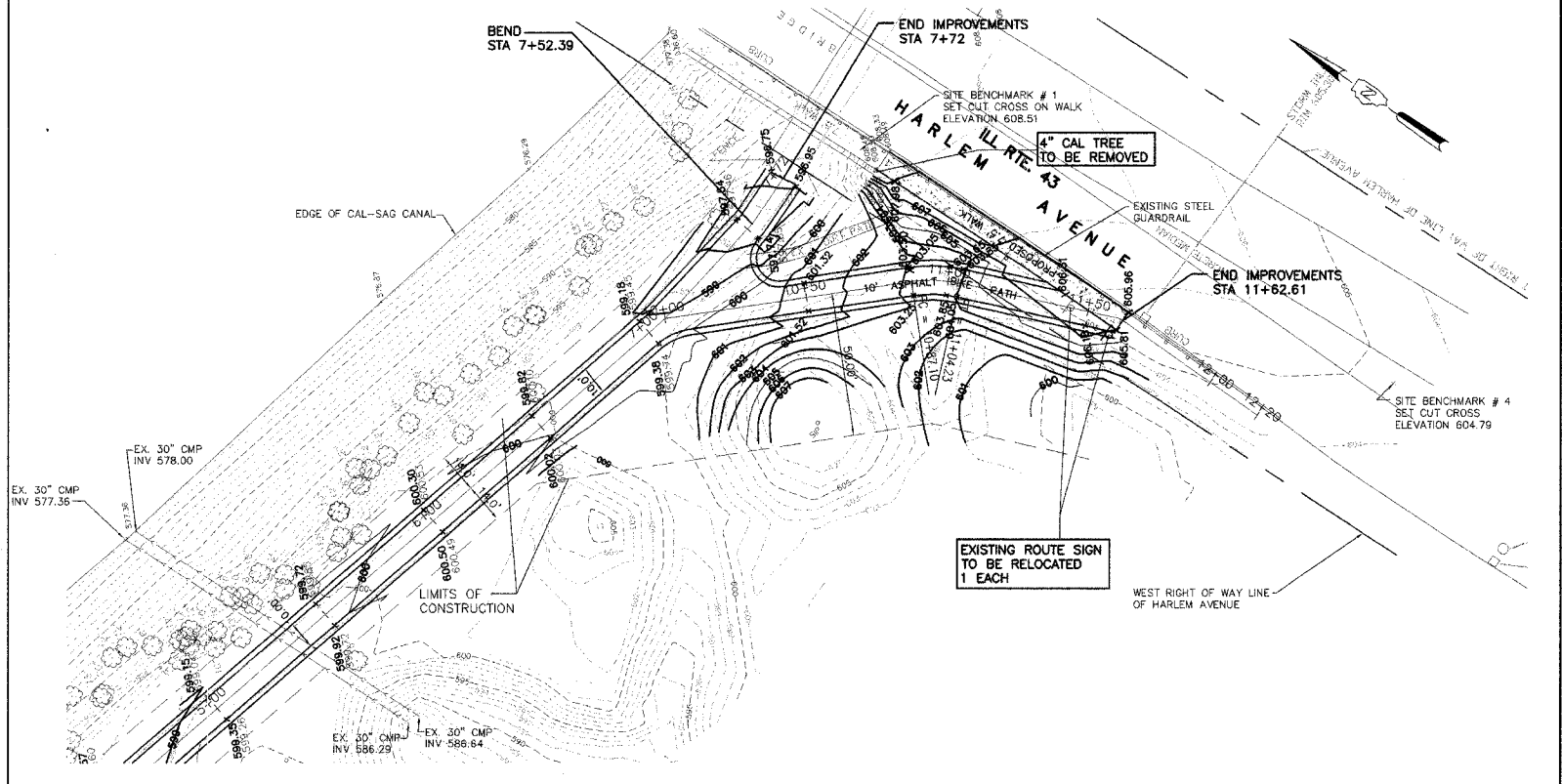
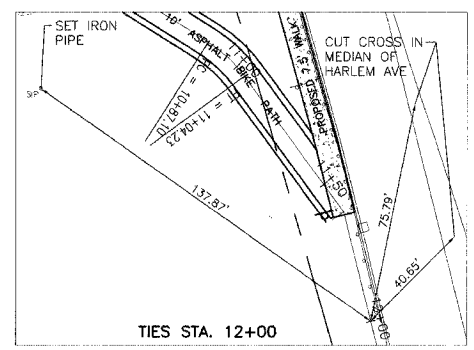
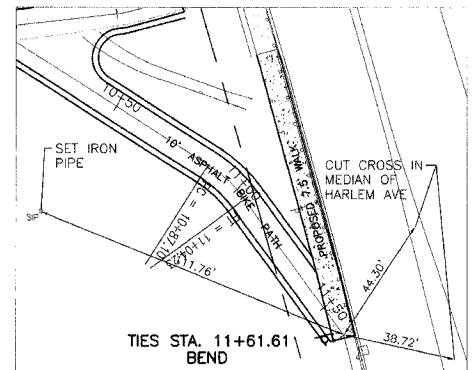
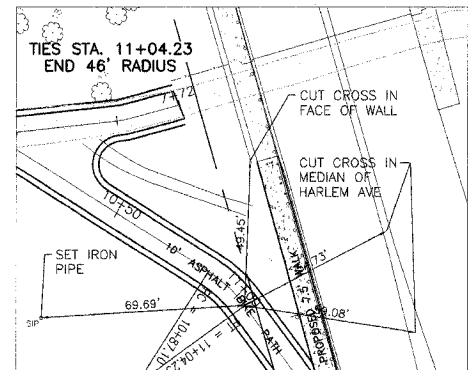


FAU RTE.	SECTION	COUNTY	TOTAL SHEETS	SHEET NO.
	07-00042-00-BT	COOK	8	6
F.H.W.A. REG.	ILLINOIS	PROJECT:		
CONTRACT NO. 83970				



CURVE DATA
 CURVE #1
 P.C. STA. 10+87.10
 P.T. STA. 11+04.23
 $\Delta = 21'20''11''$
 $R = 46.00'$
 $L = 17.13$
 $CH = 17.03$



MORRIS ENGINEERING, INC.
 5100 S. LINCOLN SUITE 100 LISLE, ILLINOIS 60532
 PHONE: (630)271-0770 • WEBSITE: ECIVIL.COM
 LOCATION: H:\06-PH\3002\PLANS-DWG\REV-3\dwg\06-PH-3002-SHEET-SITE.dwg
 DRAWN BY: CJS DESIGN BY: RAC CHECKED BY: JJV
 JOB NO.: 06-PH-3002 SCALE: 1"=30' H 1"=5' V

HARLEM AVENUE BIKE PATH EXTENSION			
PLAN & PROFILE			
DATE	REVISIONS	BY	SHEET
8-28-07	PER IDOT LETTER OF 7-31-07	RAC	6
10-01-07	PER IDOT LETTER OF 9-27-07	RAC	
10-19-07	PER IDOT BLR	RAC	
			OF 8 SHEETS

PLT: JUV, DWT, R2, 8/27/07
 ILLINOIS: 06-PH-3002-PLANS-DWG-REV-3\DWG\06-PH-3002-SHEET-SITE.dwg