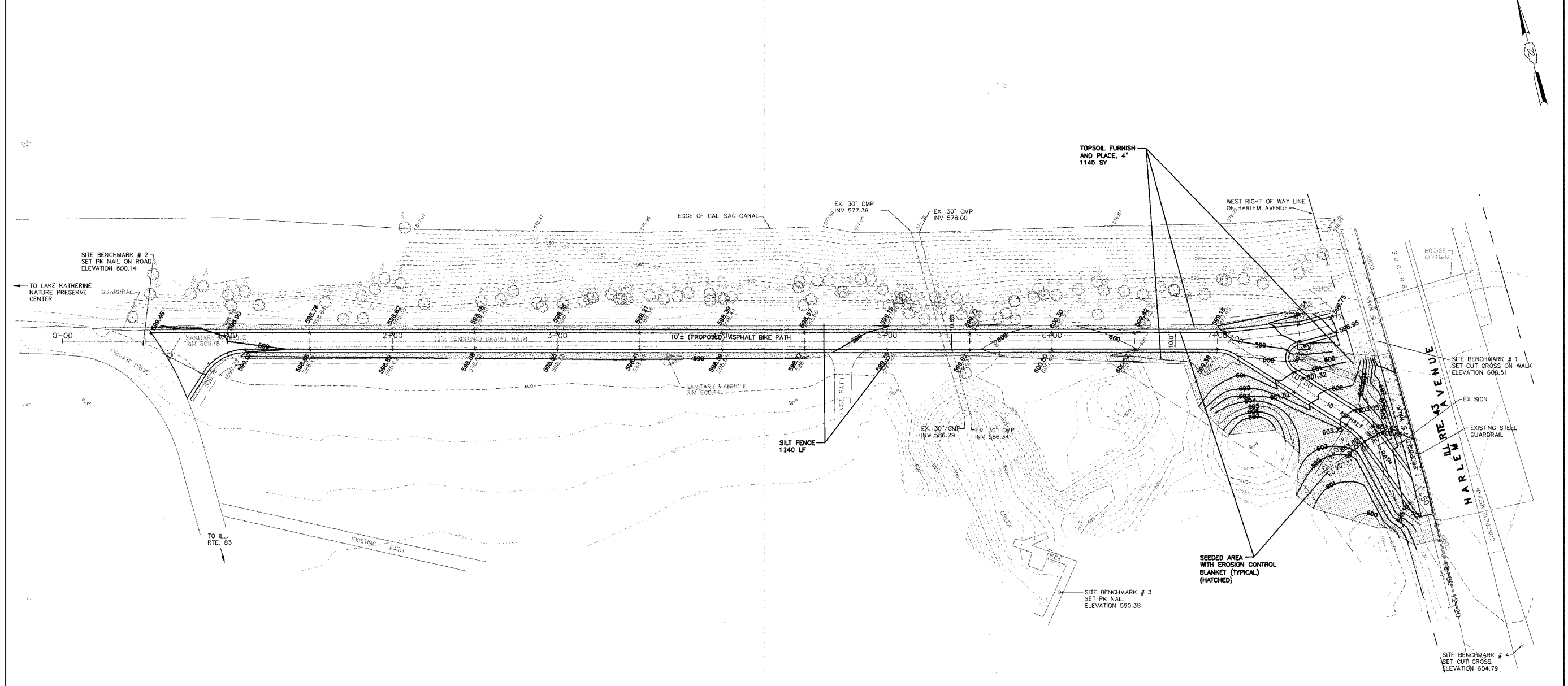


FAU RTE.	SECTION	COUNTY	TOTAL SHEETS	SHEET NO.
	07-00042-00-BT	COOK	8	7
F.H.W.A. REG.	ILLINOIS	PROJECT:		
CONTRACT NO. 83970				



PLOT DATE: 01-22-2007
 FILENAME: H:\06-PH\3002\PLANS-ENG\REV-3\06-PH-3002-SHEET-SITE.dwg

MORRIS ENGINEERING, INC.
 5100 S. LINCOLN SUITE 100 LISLE, ILLINOIS 60532
 PHONE: (630)271-0770 WEBSITE: ECIVIL.COM
 LOCATION: H:\06-PH\3002\PLANS-ENG\REV-3\06-PH-3002-SHEET-SITE.dwg
 DRAWN BY: CJS DESIGN BY: RAC CHECKED BY: JUV
 JOB NO.: 06-PH-3002 SCALE: 1"=30' H 1"=5' V

**HARLEM AVENUE
 BIKE PATH EXTENSION
 EROSION CONTROL PLAN**

DATE	REVISIONS	BY	SHEET
8-28-07	PER IDOT LETTER OF 7-31-07	RAC	7 OF 8 SHEETS
10-01-07	PER IDOT LETTER OF 9-27-07	RAC	
10-19-07	PER IDOT BLR	RAC	