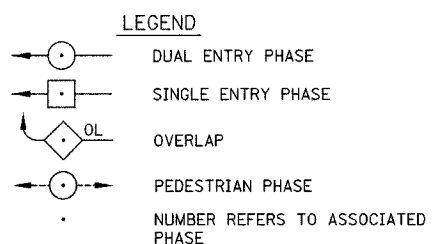
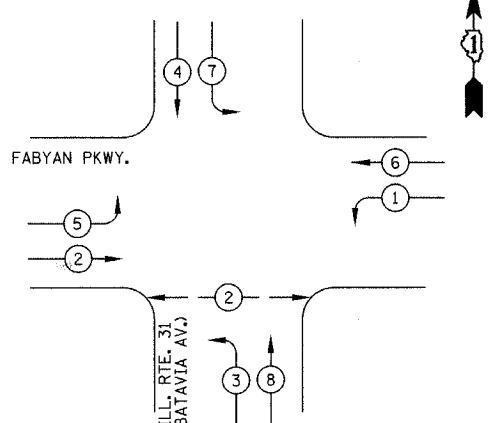
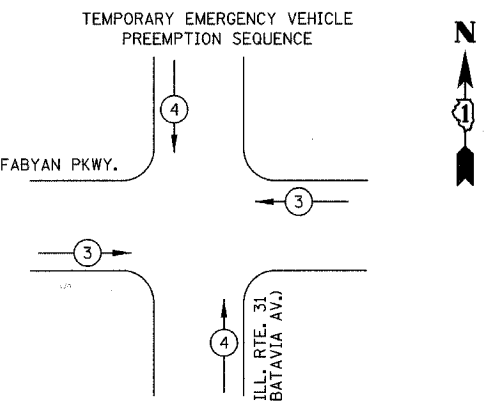


F.A.U. RTE.	SECTION	COUNTY	TOTAL SHEETS	SHEET NO.
363	06-00339-00-TL	KANE	33	6
STA.		TO STA.		
FED. ROAD DIST. NO. 7		ILLINOIS FED. AID PROJECT		

TEMPORARY CONTROLLER SEQUENCE



PHASE DESIGNATION DIAGRAM

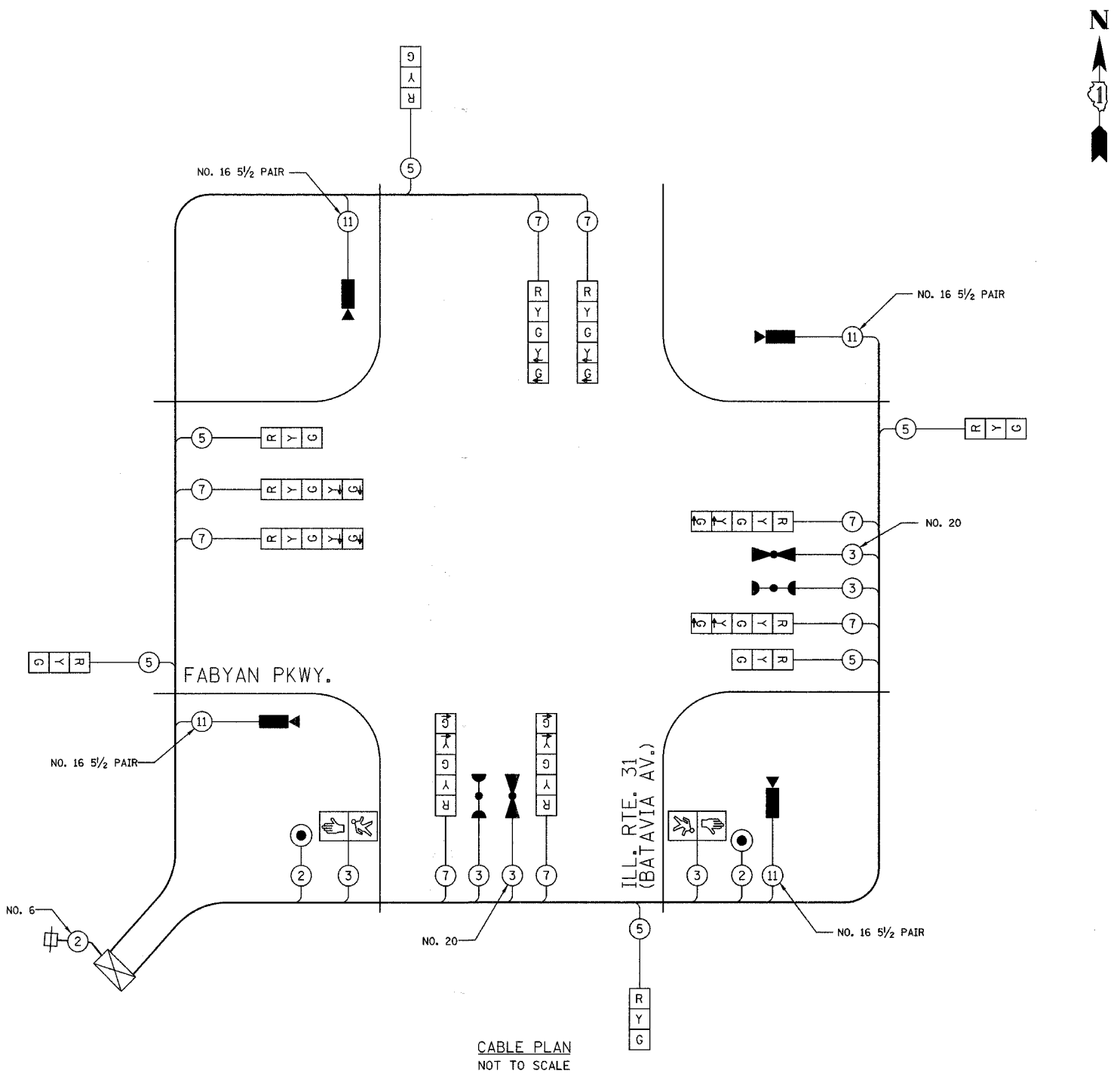


PROPOSED EMERGENCY VEHICLE PREEMPTORS

EMERGENCY VEHICLE PREEMPTOR	3	4
MOVEMENT	← →	↑ ↓

TEMPORARY CABLE DIAGRAM LEGEND

- TEMPORARY TRAFFIC SIGNAL SECTION OR PEDESTRIAN SIGNAL SECTION 12" (300 mm)
- TEMPORARY CONTROLLER CABINET
- TEMPORARY SERVICE INSTALLATION
- INDICATES NUMBER OF CONDUCTORS IN CABLE. ALL CONDUCTORS TO BE NUMBER 14 AWG WIRE UNLESS OTHERWISE NOTED.
- EMERGENCY VEHICLE LIGHT DETECTOR
- CONFIRMATION BEACON
- PEDESTRIAN PUSHBUTTON DETECTOR
- VEHICLE DETECTOR, INDUCTION LOOP
- 12" (300mm) PEDESTRIAN SIGNAL SECTION
- VIDEO VEHICLE DETECTOR



I.D.O.T. TRAFFIC SIGNAL INSTALLATION ELECTRICAL SERVICE REQUIREMENTS

TYPE	NO. LAMPS	WATTAGE INCAND.	WATTAGE LED	% OPERATION	TOTAL WATTAGE
SIGNAL (RED)	12		17	0.50	102
(YELLOW)	12		25	0.25	75
(GREEN)	12		15	0.25	45
ARROW	16		12	0.10	20
PED. SIGNAL	2		25	1.00	50
CONTROLLER	1		100	1.00	100
VIDEO SYSTEMS	1		150	1.00	150
FLASHER				0.50	
TOTAL =					542

ENERGY COSTS TO: CITY OF BATAVIA
100 N. ISLAND AVENUE
BATAVIA, IL 60510
ENERGY SUPPLY: CONTACT: STEVE LUSTED
PHONE: (630) 879-1424
COMPANY: CITY OF BATAVIA

REVISIONS	
NAME	DATE

KANE COUNTY DIVISION OF TRANSPORTATION
TEMPORARY CABLE PLAN, PHASE DESIGNATION DIAGRAM AND EMERGENCY VEHICLE PREEMPTION SEQUENCE

FABYAN PARKWAY & ILL. RTE. 31 (BATAVIA AV.)
SCALE: NOT TO SCALE
DATE: 12/14/2007

DRAWN BY: CEC
DESIGNED BY: BRD/JSH
CHECKED BY: JJE