

F.A.U. RTE.	SECTION	COUNTY	TOTAL SHEETS	SHEET NO.
363	06-00339-00-TL	KANE	33	10
STA.		TO STA.		
FED. ROAD DIST. NO. 7		ILLINOIS FED. AID PROJECT		



EXISTING EQUIPMENT TO BE REMOVED LEGEND

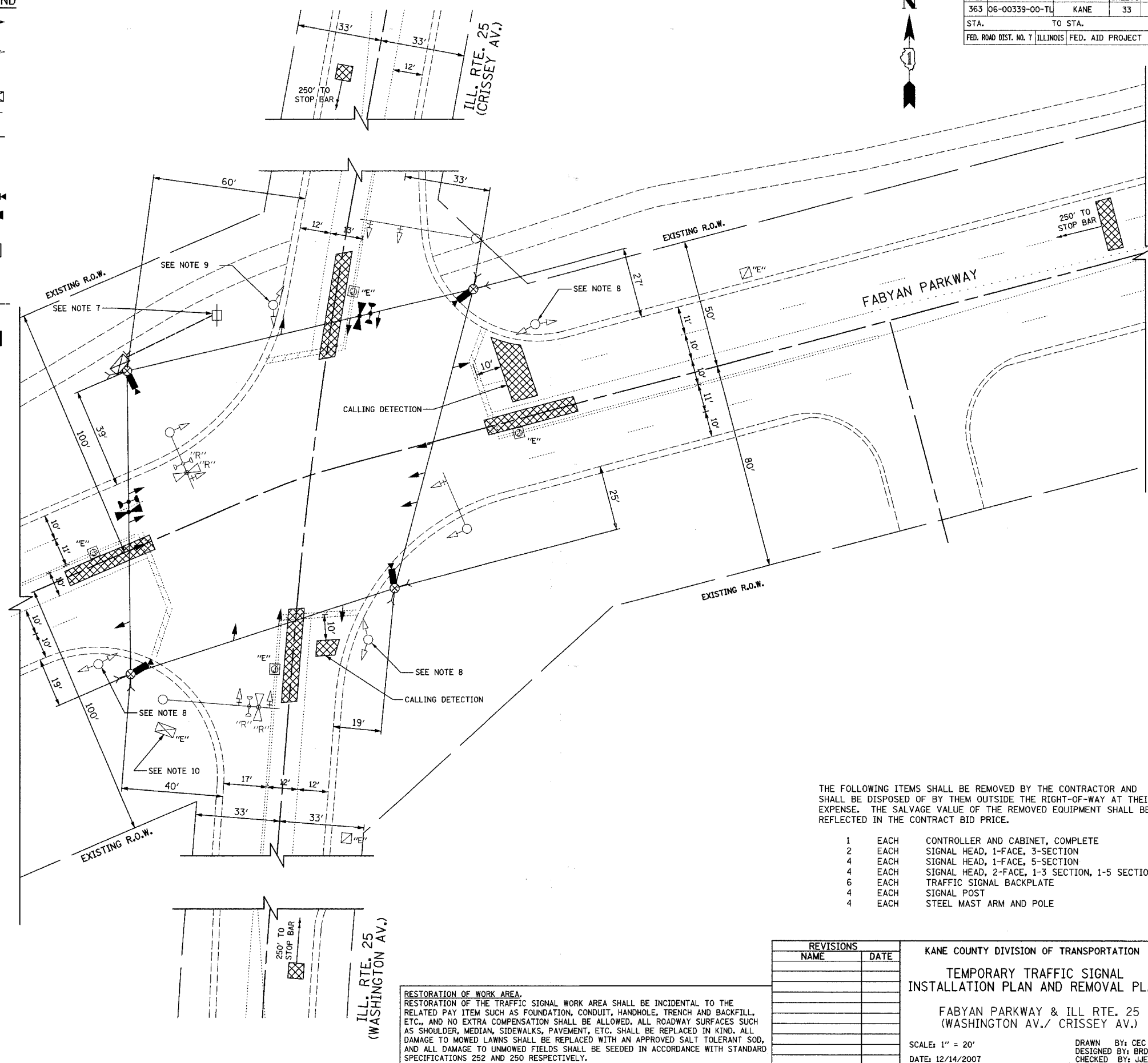
- EXISTING SIGNAL HEAD TO BE REMOVED
- EXISTING SERVICE INSTALLATION TO BE REMOVED
- EXISTING SIGNAL POST TO BE REMOVED
- EXISTING ALUMINUM MAST ARM POLE AND FOUNDATION TO BE REMOVED
- EXISTING CONTROLLER TO BE REMOVED
- EXISTING HANDHOLE TO BE REMOVED
- EXISTING PEDESTRIAN SIGNAL HEAD TO BE REMOVED
- EXISTING PEDESTRIAN PUSH BUTTON TO BE REMOVED
- EMERGENCY VEHICLE LIGHT DETECTOR TO BE RELOCATED
- CONFIRMATION BEACON TO BE RELOCATED
- EXISTING HEAVY-DUTY HANDHOLE TO BE REMOVED
- EXISTING STEEL MAST ARM POLE AND FOUNDATION TO BE REMOVED
- EXISTING JUNCTION BOX TO BE REMOVED
- EXISTING EQUIPMENT TO BE RELOCATED

TEMPORARY TRAFFIC SIGNAL LEGEND

- TEMPORARY TRAFFIC SIGNAL HEAD SPAN WIRE MOUNTED ORIGINAL LOCATION
- TEMPORARY TRAFFIC SIGNAL HEAD SPAN WIRE MOUNTED SECONDARY LOCATION
- TEMPORARY WOOD POLE (CLASS 5 OR BETTER) 45 FOOT (13.7m) MINIMUM
- TEMPORARY CONTROLLER CABINET
- TEMPORARY SPAN WIRE, TETHER WIRE, AND CABLE
- TEMPORARY SERVICE INSTALLATION
- TEMPORARY PEDESTRIAN SIGNAL HEAD, BRACKET MOUNTED
- TEMPORARY PEDESTRIAN PUSHBUTTON DETECTOR
- VIDEO VEHICLE DETECTOR
- EMERGENCY VEHICLE LIGHT DETECTOR
- CONFIRMATION BEACON
- VEHICLE DETECTOR, INDUCTION LOOP
- COMMON TRENCH
- UNIT DUCT
- G.S. CONDUIT IN TRENCH OR PUSHED
- HANDHOLE
- HEAVY-DUTY HANDHOLE

NOTES FOR TEMPORARY TRAFFIC SIGNALS

1. ALL CONTROL EQUIPMENT INCLUDING EMERGENCY PRE-EMPTION AND COMMUNICATION DEVICES FOR THE TEMPORARY TRAFFIC SIGNAL(S) SHALL BE FURNISHED BY THE CONTRACTOR.
2. ONLY CONTROLLERS SUPPLIED BY ONE OF THE DISTRICT APPROVED CLOSED LOOP EQUIPMENT MANUFACTURERS WILL BE APPROVED FOR USE AT TEMPORARY SIGNAL LOCATIONS. ALL CONTROLLERS USED FOR TEMPORARY TRAFFIC SIGNALS SHALL BE FULLY ACTUATED NEMA MICROPROCESSOR BASED WITH RS232 DATA ENTRY PORTS COMPATIBLE WITH EXISTING MONITORING SOFTWARE APPROVED BY IDOT DISTRICT 1, INSTALLED IN A NEMA TS1 OR TS2 CABINET. ONLY ONE BRAND OF CONTROLLER WILL BE ACCEPTED FOR ANY ONE CONTRACT.
3. ALL TRAFFIC SIGNAL SECTIONS AND PEDESTRIAN SIGNAL SECTIONS SHALL BE 12". HEADS SHALL BE PLACED AS INDICATED ON THE TEMPORARY TRAFFIC SIGNAL PLAN OR AS DIRECTED BY THE ENGINEER. THE CONTRACTOR SHALL FURNISH ENOUGH CABLE SLACK TO RELOCATE HEADS TO ANY POSITION ON THE SPAN WIRE OR AT LOCATIONS ILLUSTRATED ON THE PLANS FOR CONSTRUCTION STAGING. THE TEMPORARY TRAFFIC SIGNAL SHALL REMAIN IN OPERATION DURING ALL SIGNAL HEAD RELOCATIONS. EACH TEMPORARY TRAFFIC SIGNAL HEAD SHALL HAVE ITS OWN CABLE FROM THE CONTROLLER CABINET TO THE SIGNAL HEAD.
4. ALL EXISTING STREET NAME AND INTERSECTION REGULATORY SIGNS SHALL BE REMOVED FROM EXISTING POLES, RELOCATED AND SECURELY FASTENED TO THE SIGNAL SPAN WIRE OR WOOD POLE AS DIRECTED BY THE ENGINEER.
5. ANY TEMPORARY SIGNAL WITHIN AN EXISTING CLOSED LOOP TRAFFIC SIGNAL SYSTEM SHALL BE INTERCONNECTED TO THAT SYSTEM USING SIMILAR BRAND CONTROL EQUIPMENT.
6. THE TEMPORARY TRAFFIC SIGNAL SHALL HAVE THE SIGNAL HEAD DISPLAYS, SIGNAL HEAD PLACEMENTS AND CONTROLLER PHASING MATCH THE EXISTING TRAFFIC SIGNAL, AT THE TIME OF THE TURN ON, IF NO TRAFFIC STAGING IS IN PLACE OR WILL NOT BE STAGED ON THE DAY OF THE TURN ON.
7. A 2" DIAMETER GALVANIZED STEEL CONDUIT SHALL BE INSTALLED FROM THE TEMPORARY TRAFFIC SIGNAL CONTROLLER TO THE EXISTING SERVICE INSTALLATION, AND THE FOUNDATION OF THE SERVICE INSTALLATION SHALL BE DRILLED. THIS WORK SHALL BE CONSIDERED INCIDENTAL TO THE PAY ITEM "TEMPORARY TRAFFIC SIGNAL INSTALLATION." PRIOR TO BEGINNING THIS WORK, THE CONTRACTOR SHALL CONTACT THE CITY OF GENEVA TO VERIFY THE LOCATION OF THE SERVICE INSTALLATION. FOLLOWING THE REMOVAL OF THE TEMPORARY TRAFFIC SIGNAL INSTALLATION, THE EXISTING SERVICE INSTALLATION SHALL BE REMOVED.
8. THIS EXISTING TRAFFIC SIGNAL POST SHALL BE REMOVED. THE EXISTING TYPE A CONCRETE FOUNDATION SHALL REMAIN FOR USE BY THE PROPOSED TRAFFIC SIGNAL POST.
9. THE EXISTING TRAFFIC SIGNAL POST AND TYPE A CONCRETE FOUNDATION ON THE NORTHWEST CORNER SHALL BE REMOVED.
10. THE EXISTING TRAFFIC SIGNAL CONTROLLER AND CABINET SHALL BE REMOVED. THE EXISTING TYPE D FOUNDATION SHALL REMAIN.
11. THE EXISTING LIGHT DETECTORS AND CONFIRMATION BEACONS, SHALL BE RELOCATED TO THE PROPOSED MAST ARMS. THE EXISTING LIGHT DETECTOR AMPLIFIER SHALL BE RELOCATED TO THE PROPOSED CONTROLLER CABINET.
12. RESTORATION OF PAVEMENT UPON REMOVAL OF HANDHOLES SHALL BE CONSIDERED INCIDENTAL TO THE PAY ITEM "REMOVE EXISTING HANDHOLE".
13. ALL DETECTION ZONES ARE APPROXIMATE. THE EXACT LOCATIONS SHALL BE DETERMINED AND LAID OUT IN THE FIELD BY THE MANUFACTURER'S TECHNICIAN AS APPROVED BY THE ENGINEER.



THE FOLLOWING ITEMS SHALL BE REMOVED BY THE CONTRACTOR AND SHALL BE DISPOSED OF BY THEM OUTSIDE THE RIGHT-OF-WAY AT THEIR EXPENSE. THE SALVAGE VALUE OF THE REMOVED EQUIPMENT SHALL BE REFLECTED IN THE CONTRACT BID PRICE.

1	EACH	CONTROLLER AND CABINET, COMPLETE
2	EACH	SIGNAL HEAD, 1-FACE, 3-SECTION
4	EACH	SIGNAL HEAD, 1-FACE, 5-SECTION
4	EACH	SIGNAL HEAD, 2-FACE, 1-3 SECTION, 1-5 SECTION
6	EACH	TRAFFIC SIGNAL BACKPLATE
4	EACH	SIGNAL POST
4	EACH	STEEL MAST ARM AND POLE

REVISIONS	
NAME	DATE

KANE COUNTY DIVISION OF TRANSPORTATION
**TEMPORARY TRAFFIC SIGNAL
 INSTALLATION PLAN AND REMOVAL PLAN**
 FABYAN PARKWAY & ILL RTE. 25
 (WASHINGTON AV./ CRISSEY AV.)

SCALE: 1" = 20'
 DATE: 12/14/2007
 DRAWN BY: CEC
 DESIGNED BY: BRD/JSH
 CHECKED BY: JJE

RESTORATION OF WORK AREA.
 RESTORATION OF THE TRAFFIC SIGNAL WORK AREA SHALL BE INCIDENTAL TO THE RELATED PAY ITEM SUCH AS FOUNDATION, CONDUIT, HANDHOLE, TRENCH AND BACKFILL, ETC., AND NO EXTRA COMPENSATION SHALL BE ALLOWED. ALL ROADWAY SURFACES SUCH AS SHOULDER, MEDIAN, SIDEWALKS, PAVEMENT, ETC. SHALL BE REPLACED IN KIND. ALL DAMAGE TO MOWED LAWNS SHALL BE REPLACED WITH AN APPROVED SALT TOLERANT SOD, AND ALL DAMAGE TO UNMOWED FIELDS SHALL BE SEEDED IN ACCORDANCE WITH STANDARD SPECIFICATIONS 252 AND 250 RESPECTIVELY.