

WATER MAIN FITTINGS

- WM-F 11
STA. 26+45
12"x6" TEE
- WM-F 12
STA. 29+16
12"x6" TEE
- WM-F 13
12" TEE
(INSIDE VALVE VAULT)
- WM-F14
12"-45" BEND
- WM-F15
12"-45" BEND
(CONNECT TO EXISTING)

WATER MAIN PIPES

- WM-P 4
APPROX. 600 L.F. OF 12"
- WM-P 4A
APPROX. 22 L.F. OF 20" CASING
- WM-P 4B
APPROX. 22 L.F. OF 20" CASING
- WM-P P5
APPROX. 22 L.F. OF 6" (RJT)
(ADDITIONAL HYDRANT LEADER)
- WM-P 6
APPROX. 26 L.F. OF 6" (RJT)
(ADDITIONAL HYDRANT LEADER)
- WM-P 7
APPROX. 26 L.F. OF 12" (RJT)

WATER VALVE VAULTS

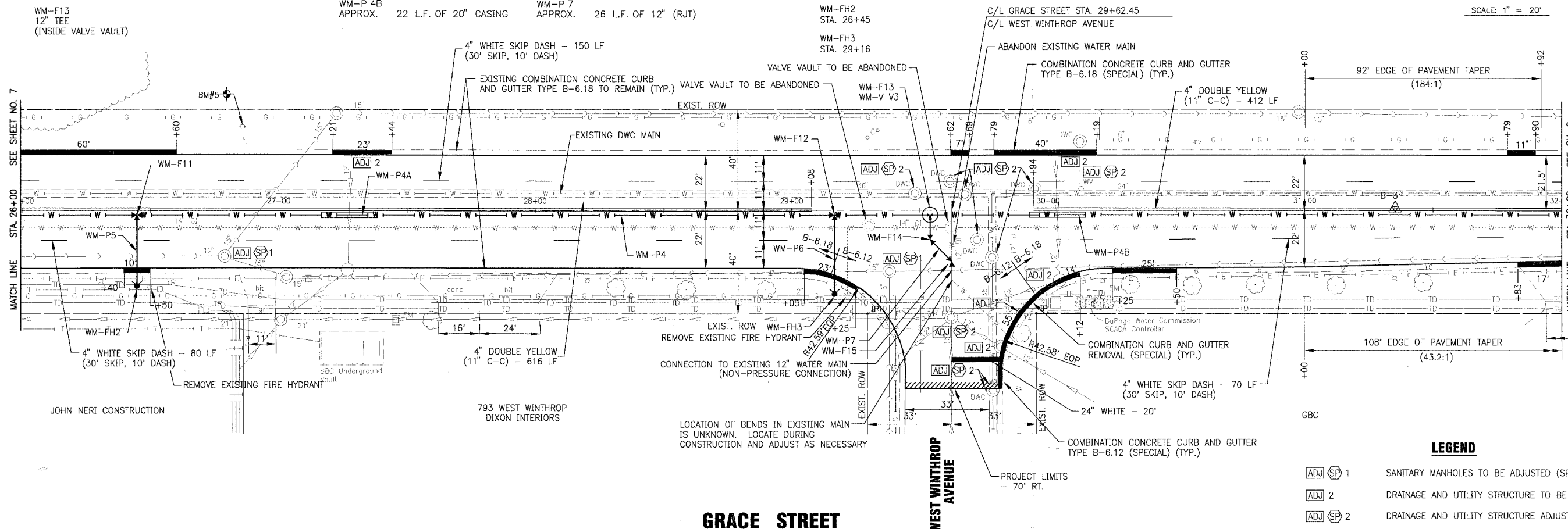
- WM-V V3
12" GATE VALVE IN VAULT
(VALVE ATTACHED TO LINE TEE)

FIRE HYDRANTS

- WM-FH2
STA. 26+45
- WM-FH3
STA. 29+16

F.A.U. RTE.	SECTION	COUNTY	TOTAL SHEETS	SHEET NO.
2619	06-0096-00-RS	DuPAGE	24	8
STA. 26+00		TO STA. 32+00		
FED. ROAD DIST. NO	ILLINOIS	FED AID PROJECT		
C-91-100-07		M-8003 (736)		
CONTRACT NO.: 83990				

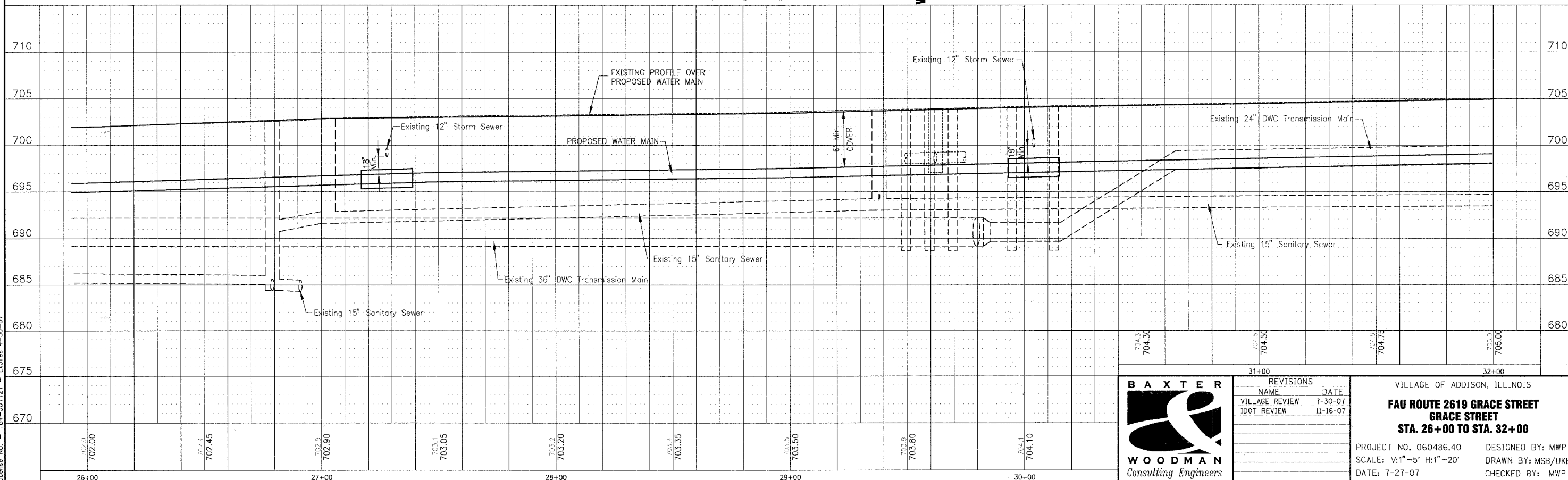
SCALE: 1" = 20'



LEGEND

- ADJ SP 1 SANITARY MANHOLES TO BE ADJUSTED (SPECIAL)
- ADJ 2 DRAINAGE AND UTILITY STRUCTURE TO BE ADJUSTED
- ADJ SP 2 DRAINAGE AND UTILITY STRUCTURE ADJUSTMENT (SPECIAL)

GRACE STREET



I:\ADDN\060486 - Grace STP (App)\DWG\0486\66\PLN.dwg - PP-S18
 Plotted: 11/20/07 @ 8:58pm by: B. Spahr
 Date: 11/20/07
 State of Illinois - Professional Design Firm
 License No. - 184-001121 - Expires 4-30-07



REVISIONS	
NAME	DATE
VILLAGE REVIEW	7-30-07
IDOT REVIEW	11-16-07

VILLAGE OF ADDISON, ILLINOIS
FAU ROUTE 2619 GRACE STREET
GRACE STREET
STA. 26+00 TO STA. 32+00

PROJECT NO. 060486.40 DESIGNED BY: MWP
 SCALE: V:1"=5' H:1"=20' DRAWN BY: MSB/UKB
 DATE: 7-27-07 CHECKED BY: MWP