

WATER MAIN FITTINGS

- WM-F 24
STA. 38+66
12"x6" TEE
- WM-F 25
12"x6" TEE
(INSIDE VALVE VAULT)
- WM-F 26
8"-45' BEND
- WM-F 27
8"-45' BEND
(CONNECT TO EXISTING)
- WM-F 28
STA. 42+03
12"x6" TEE
- WM-F 29
12"x6" TEE
(INSIDE VALVE VAULT)
- WM-F 30
6"-45' BEND
- WM-F 31
6"-45' BEND

WATER MAIN PIPES

- WM-P 13
APPROX. 600 L.F. OF 12"
- WM-P 13A
APPROX. 22 L.F. OF 20" CASING
- WM-P 13B
APPROX. 22 L.F. OF 20" CASING
- WM-P 14
APPROX. 17 L.F. OF 6" (RJT)
(ADDITIONAL HYDRANT LEADER)
- WM-P 15
APPROX. 25 L.F. OF 8" (RJT)
- WM-P 16
APPROX. 22 L.F. OF 6" (RJT)
(ADDITIONAL HYDRANT LEADER)
- WM-P 17
APPROX. 28 L.F. OF 6" (RJT)

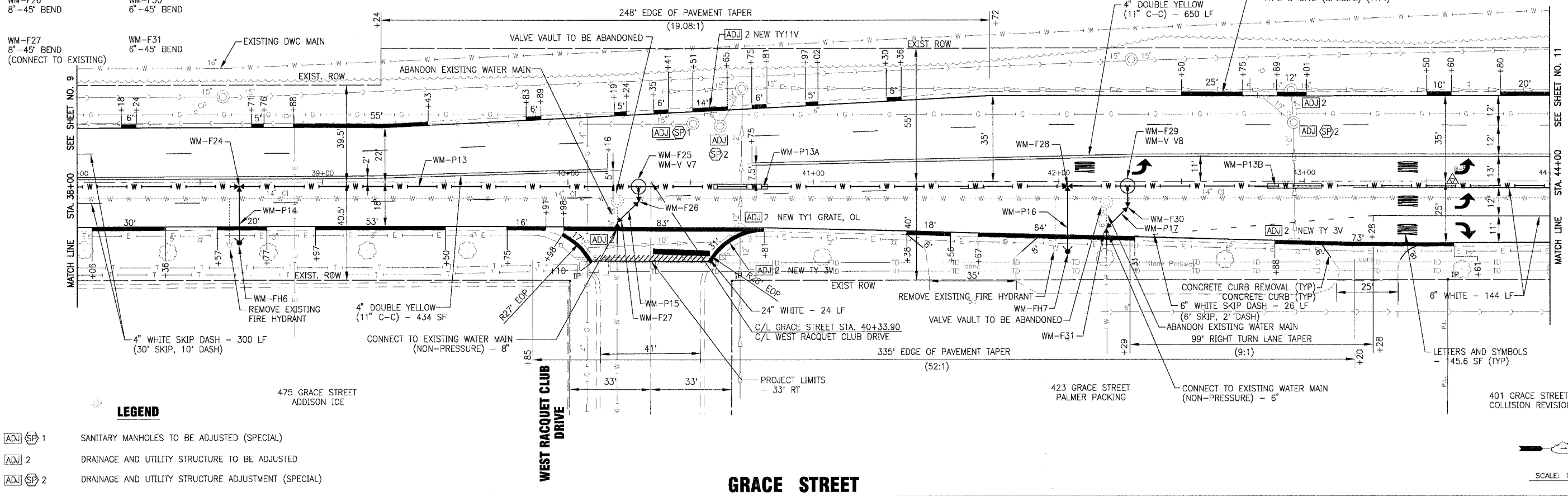
WATER VALVE VAULTS

- WM-V 7
8" GATE VALVE IN VAULT
(VALVE ATTACHED TO LINE TEE)
- WM-V 8
6" GATE VALVE IN VAULT
(VALVE ATTACHED TO LINE TEE)

FIRE HYDRANTS

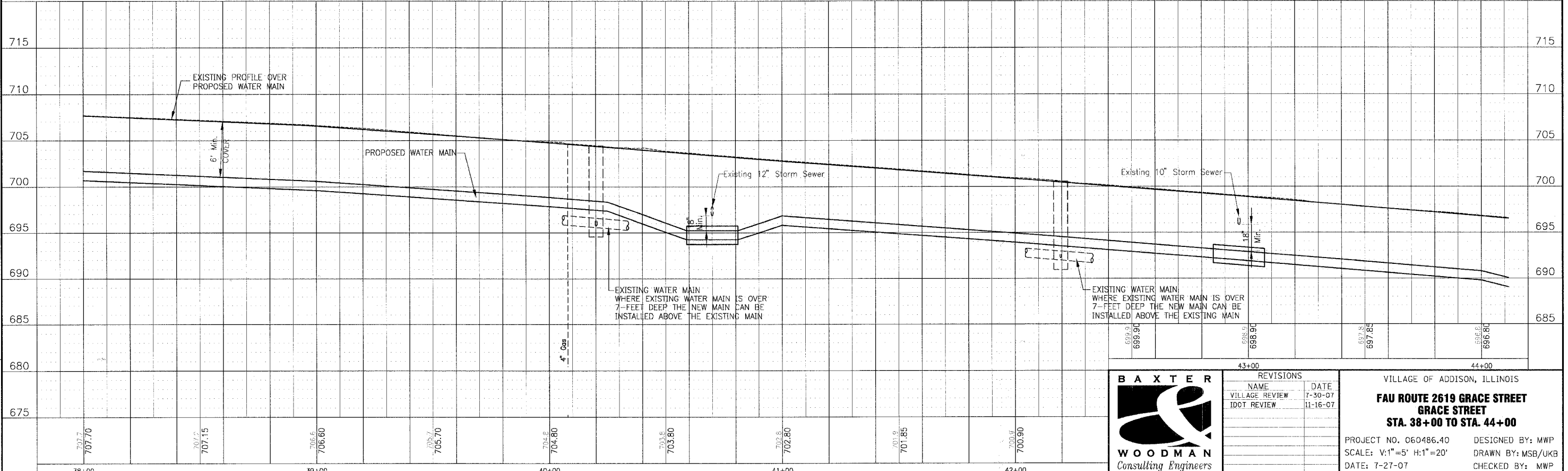
- WM-FH6
STA. 38+66
- WM-FH7
STA. 42+03
- COMBINATION CURB AND GUTTER
REMOVAL (SPECIAL) (TYP.)
- COMBINATION CONCRETE CURB AND GUTTER
TYPE B-6.12 (SPECIAL) (TYP.)

F.A.U. RTE. 2619	SECTION 06-0096-00-RS	COUNTY DUPAGE	TOTAL SHEETS 24	SHEET NO. 10
STA. 38+00		TO STA. 44+00		
FED. ROAD DIST. NO. C-91-100-07	ILLINOIS	FED AID PROJECT M-8003 (736)		
CONTRACT NO.: 83990				



LEGEND

- ADJ SP 1 SANITARY MANHOLES TO BE ADJUSTED (SPECIAL)
- ADJ 2 DRAINAGE AND UTILITY STRUCTURE TO BE ADJUSTED
- ADJ SP 2 DRAINAGE AND UTILITY STRUCTURE ADJUSTMENT (SPECIAL)



I:\ADDM\060486 - Grace STP (LAPP)\DWG\60486\PLAN.dwg - PP-SH10
 Plotted: 11-20-07 @ 5:06pm By: 580kcr
 Copyright © 2007, By Baxter & Woodman, Inc.
 State of Illinois - Professional Design Firm
 License No. - 184-001121 - Expires 4-30-07



REVISIONS	
NAME	DATE
VILLAGE REVIEW	7-30-07
IDOT REVIEW	11-16-07

VILLAGE OF ADDISON, ILLINOIS
FAU ROUTE 2619 GRACE STREET
GRACE STREET
STA. 38+00 TO STA. 44+00
 PROJECT NO. 060486.40 DESIGNED BY: MWP
 SCALE: V:1"=5' H:1"=20' DRAWN BY: MSB/UKB
 DATE: 7-27-07 CHECKED BY: MWP