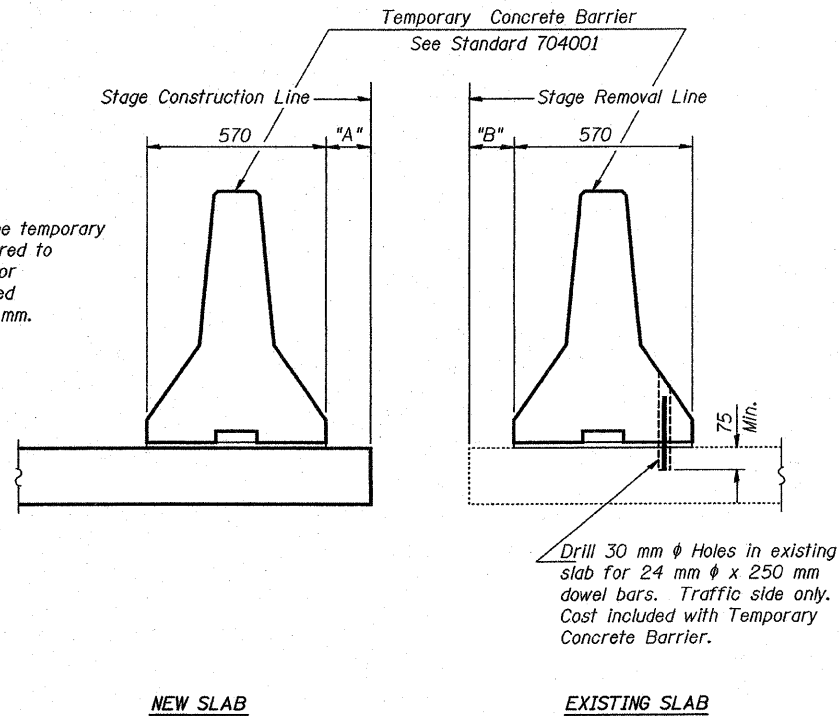


STATE OF ILLINOIS
DEPARTMENT OF TRANSPORTATION

ROUTE NO.	SECTION	COUNTY	TOTAL SHEETS	SHEET NO.	SHEET NO. 3
FAS 204	**	ROCK ISLAND	31	11	14 SHEETS
FED. ROAD DIST. NO. 7		ILLINOIS	FED. AID PROJECT		

** 92-00297-00-BR

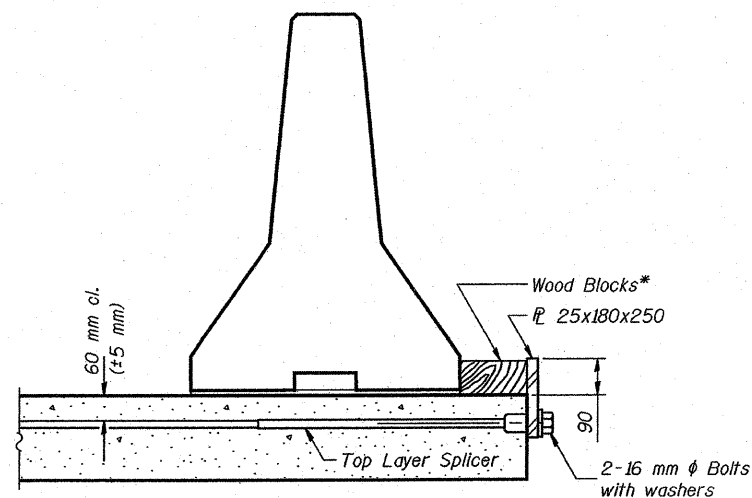
When "A" is 150 mm or less, the temporary concrete barrier shall be anchored to new slab according to Detail I or Detail II. No anchorage required when "A" is greater than 1050 mm.



SECTIONS THRU SLAB

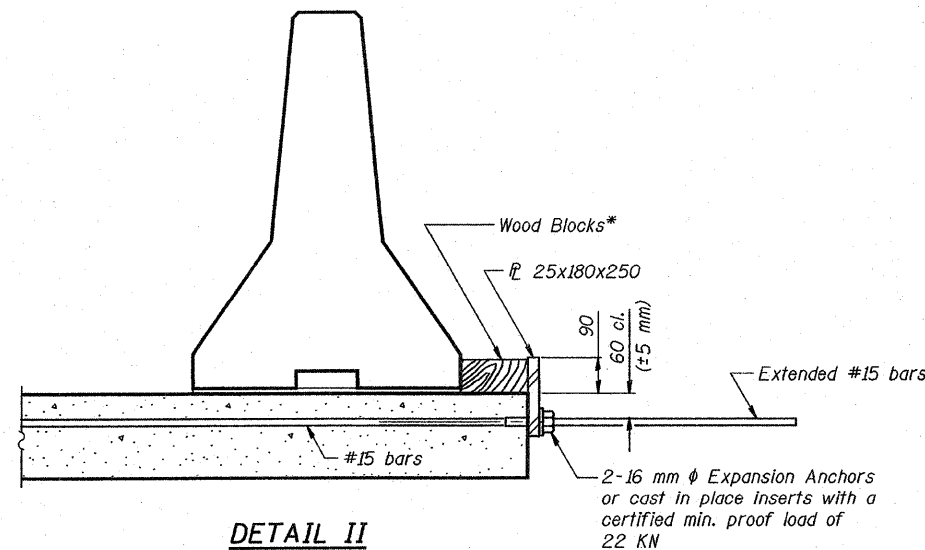
NOTES

- Detail I - With Bar Splicer or Couplers:
Connect one (1) 25x180x250 steel \bar{L} to the top layer of couplers with 2-16 mm ϕ bolts screwed to coupler at approximate \bar{C} of each 3 m barrier panel.
- Detail II - With Extended Reinforcement Bars:
Connect one (1) 25x180x250 steel \bar{L} to the concrete slab with 2-16 mm ϕ Expansion Anchors or cast in place inserts spaced between the top layer of reinforcement at approximate \bar{C} of each 3 m barrier panel.
- Cost of anchorage included with ~~Temporary Concrete Barrier~~ **STD. 701321**
- All dimensions are in millimeters (mm) except as noted.



DETAIL I

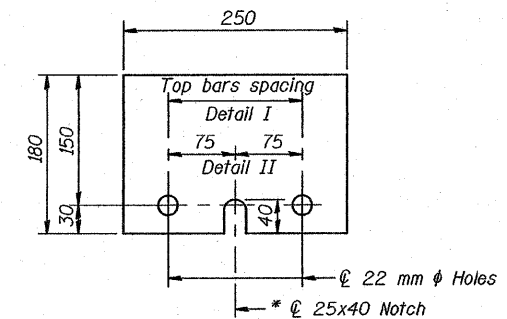
The 25x180x250 Plate shall not be removed until Stage II Construction forms and reinforcement bars are in place.



DETAIL II

The 25x180x250 Plate shall not be removed until Stage II Construction forms and all reinforcement bars are in place and the concrete is ready to be placed.

*Wood blocks may be omitted when required to provide minimum stage traffic lane width. When the wood blocks are omitted, the concrete barrier shall be in direct contact with the steel retainer plate.



\bar{L} 25x180x250

* Required only with Detail II

DESIGNED	SPN
CHECKED	TWH
DRAWN	R. Doty
CHECKED	SPN/TWH

Aug. 24, 2007
EXAMINED *Thomas J. Demagala*
ENGINEER OF BRIDGE DESIGN
PASSED *Ralph E. Anderson*
ENGINEER OF BRIDGES AND STRUCTURES

R-27 (M) 4-30-99

TEMPORARY CONCRETE BARRIER
FOR STAGE CONSTRUCTION
F.A.S. RT. 204 SEC. 92-00297-00-BR
ROCK ISLAND COUNTY
STA. 0+304.801