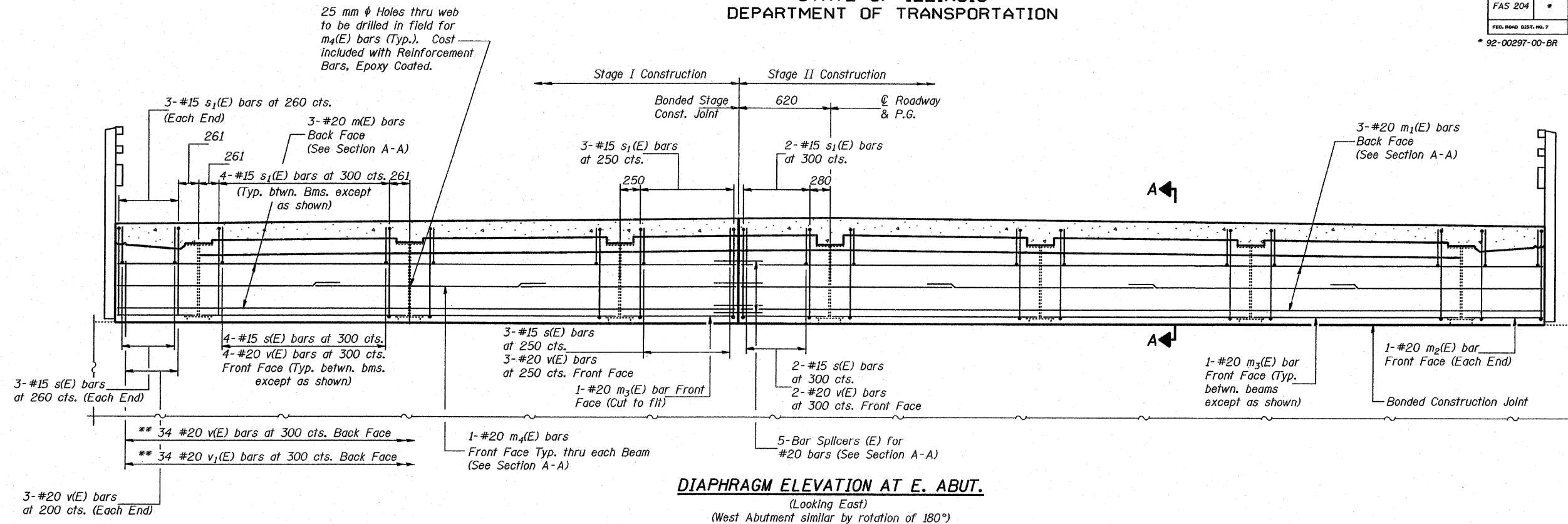


STATE OF ILLINOIS  
DEPARTMENT OF TRANSPORTATION

ROUTE NO.	SECTION	COUNTY	TOTAL SHEETS	SHEET NO.	SHEET NO. 7
FAS 204	*	ROCK ISLAND	31	15	14 SHEETS
FED. ROAD DIST. NO. 7	ILLINOIS	FED. AID PROJECT-			

\* 92-00297-00-BR



DIAPHRAGM ELEVATION AT E. ABUT.

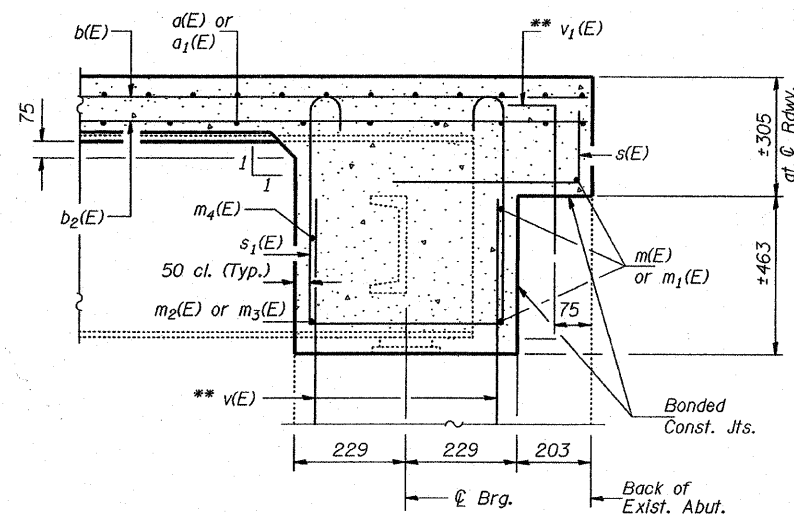
(Looking East)  
(West Abutment similar by rotation of 180°)

\*\* Epoxy grout  $v(E)$  and  $v_1(E)$  bars in 230 mm (Min.) drilled holes according to Section 584 of the Standard Specifications.

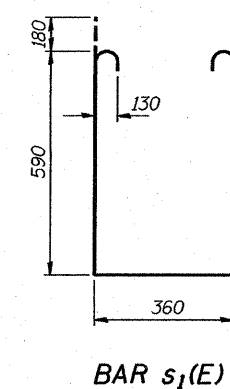
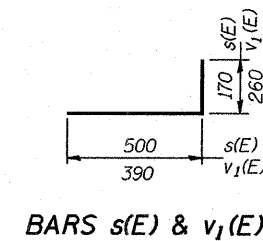
MIN. BAR LAP  
#20 Bar = 850

BILL OF MATERIAL

Bar	No.	Size	Length (m)	Shape
$a(E)$	178	#15	4.40	—
$a_1(E)$	178	#15	5.64	—
$b(E)$	72	#15	10.06	—
$b_1(E)$	34	#20	6.62	—
$b_2(E)$	93	#15	6.85	—
$m(E)$	6	#20	4.40	—
$m_1(E)$	6	#20	5.64	—
$m_2(E)$	4	#20	0.75	—
$m_3(E)$	12	#20	1.34	—
$m_4(E)$	14	#20	2.08	—
$s(E)$	62	#15	0.67	┌
$s_1(E)$	62	#15	1.90	┌
$v(E)$	130	#20	0.68	—
$v_1(E)$	68	#20	0.65	┌
Reinforcement Bars, Epoxy Coated		kg	6290	
Concrete Superstructure		m <sup>3</sup>	45.6	



SECTION A-A



DESIGNED	SPN
CHECKED	TWH
DRAWN	R. Doty
CHECKED	SPN/TWH

Aug. 24, 2007

EXAMINED *Thomas J. Damagala*  
ENGINEER OF BRIDGE DESIGN

PASSED *Ralph E. Anderson*  
ENGINEER OF BRIDGES AND STRUCTURES

SUPERSTRUCTURE DETAILS  
F.A.S. RT. 204 SEC. 92-00297-00-BR  
ROCK ISLAND COUNTY  
STA. 0+304.801