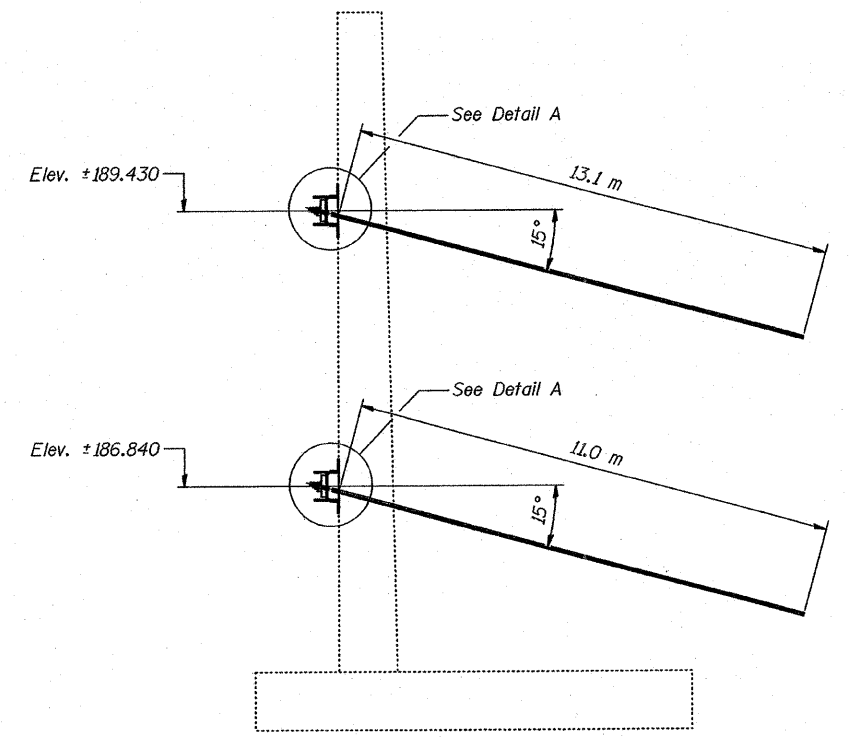
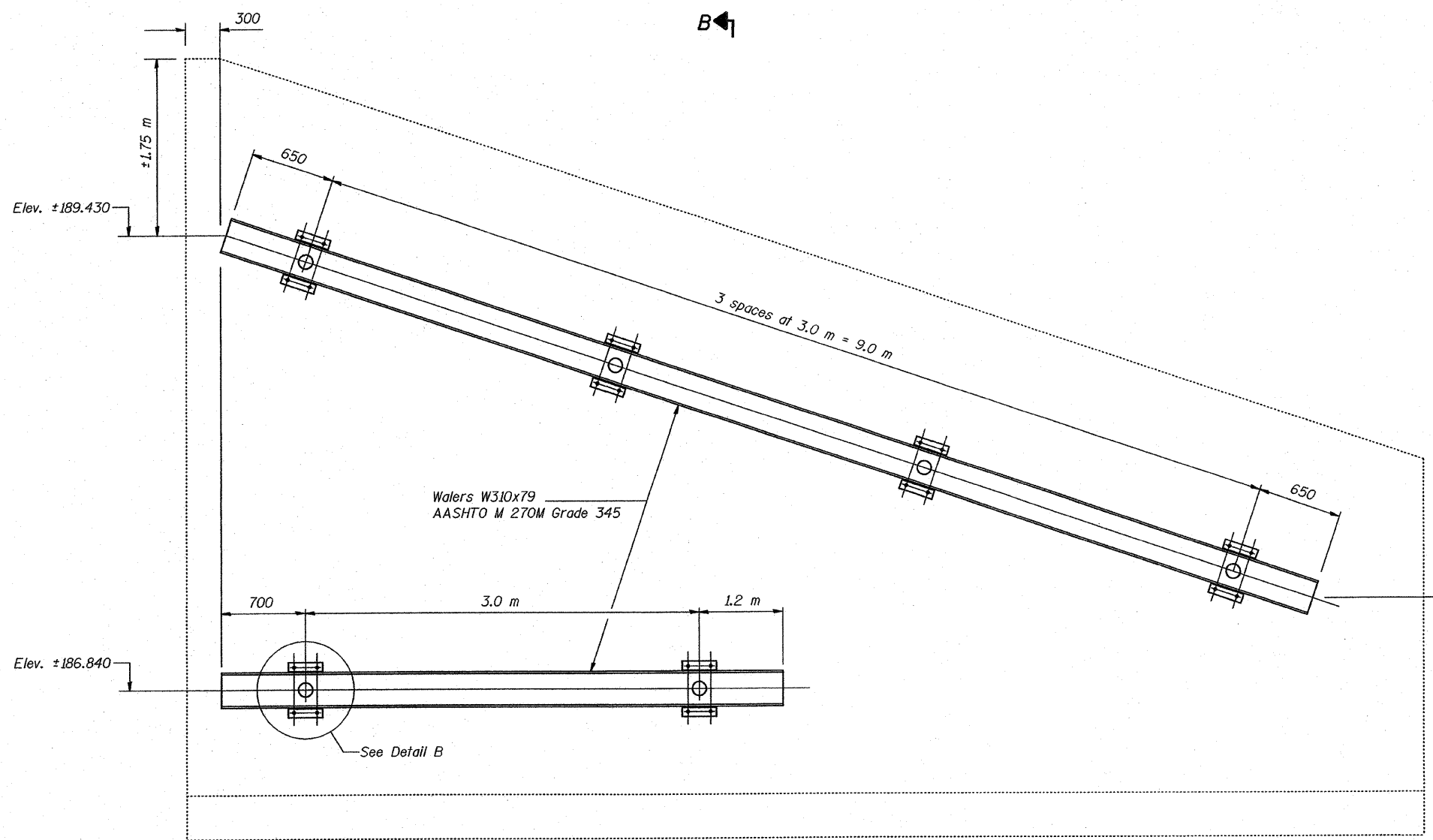


STATE OF ILLINOIS
DEPARTMENT OF TRANSPORTATION

ROUTE NO.	SECTION	COUNTY	SHEET NO.	SHEET	SHEET NO. 12
FAS 204	*	ROCK ISLAND	31	20	14 SHEETS
FED. ROAD DIST. NO. 7		ILLINOIS	FED. AID PROJECT-		

* 92-00297-00-BR



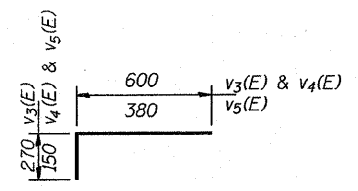
SECTION B-B

ELEVATION - N. W. & N.E. WINGWALLS

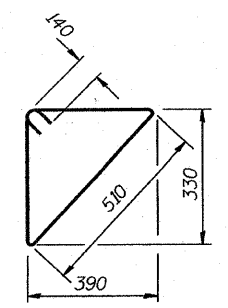
TWO ABUTMENTS
BILL OF MATERIAL

Bar	No.	Size	Length(m)	Shape
$s_2(E)$	46	#15	1.51	▽
$v_2(E)$	10	#15	6.70	—
$v_3(E)$	92	#15	0.87	L
$v_4(E)$	46	#15	0.75	L
$v_5(E)$	46	#15	0.53	L
Concrete Structures			m ³	4.4
Reinforcement Bars, Epoxy Coated			kg	430

Note: Work this sheet with sheet 11 of 15.



BARS $v_3(E)$, $v_4(E)$ & $v_5(E)$



BAR $s_2(E)$

DESIGNED	SPN
CHECKED	TWH
DRAWN	R. Doty
CHECKED	SPN/TWH

Aug. 24, 2007

EXAMINED *Thomas J. Domagala*
ENGINEER OF BRIDGES DESIGN

PASSED *Ronald E. Anderson*
ENGINEER OF BRIDGES AND STRUCTURES

WALL ANCHOR DETAILS
F.A.S. RT. 204 SEC. 92-00297-00-BR
ROCK ISLAND COUNTY
STA. 0+304.801