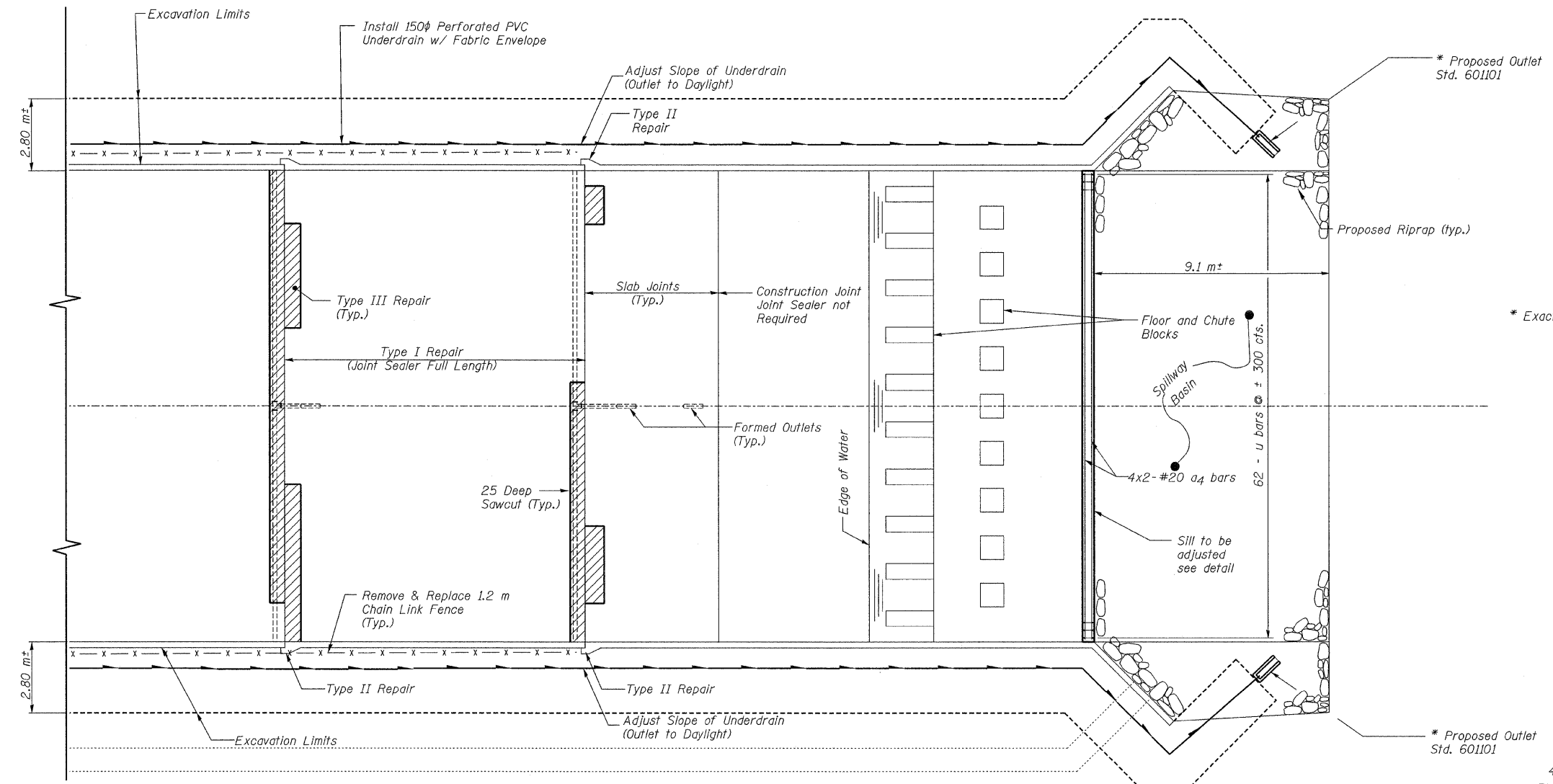
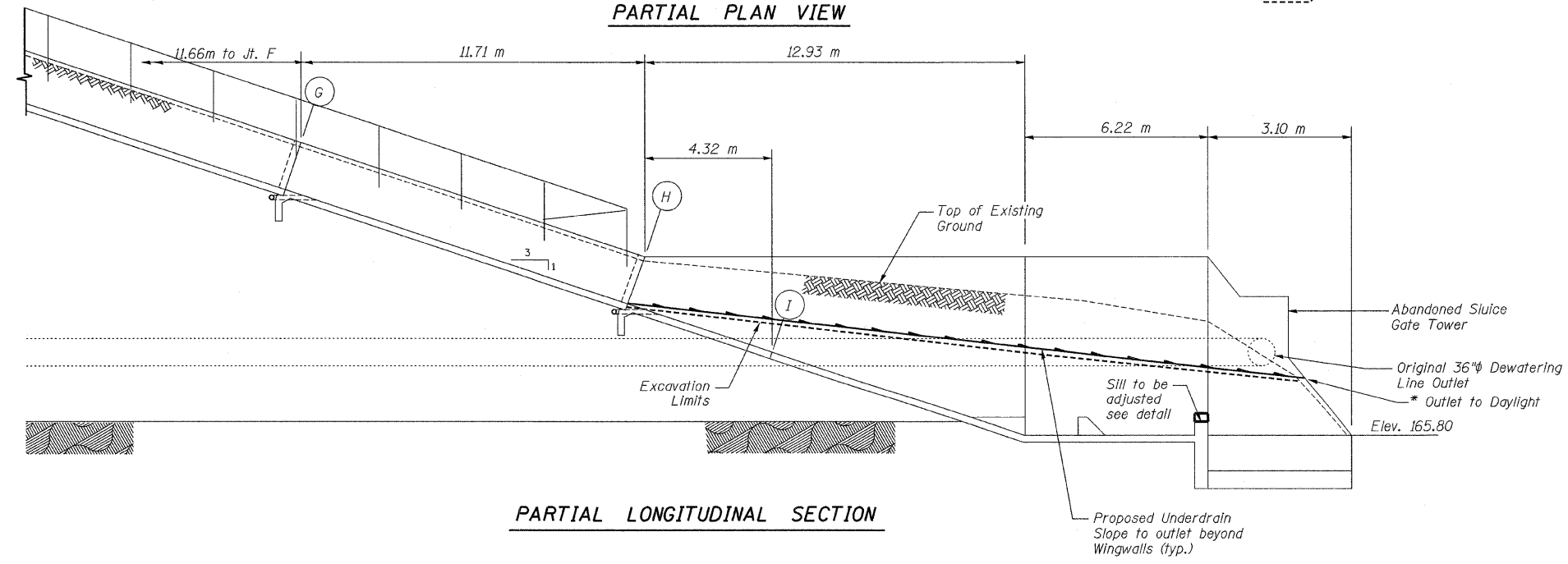


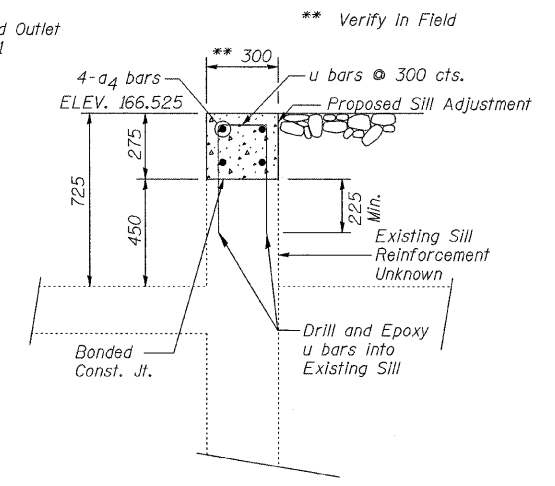
F.A. RTE.	SECTION	COUNTY	TOTAL SHEETS	SHEET NO.
204	92-00297-00-BR	ROCK ISLAND	31	26
STA. 0+270		TO STA. 0+340		
FED. ROAD DIST. NO. 7 ILLINOIS FED. AID PROJECT				



PARTIAL PLAN VIEW



PARTIAL LONGITUDINAL SECTION



SILL DETAIL
(Concrete Structures)

REVISIONS	
NAME	DATE

ILLINOIS DEPARTMENT OF TRANSPORTATION
SPILLWAY
DETAIL PLAN & ELEVATION
 C.H. 59 OVER
 LAKE GEORGE SPILLWAY
 ROCK ISLAND, COUNTY
 DRAWN BY RAP
 CHECKED BY JBF
 DATE NOV. 2007