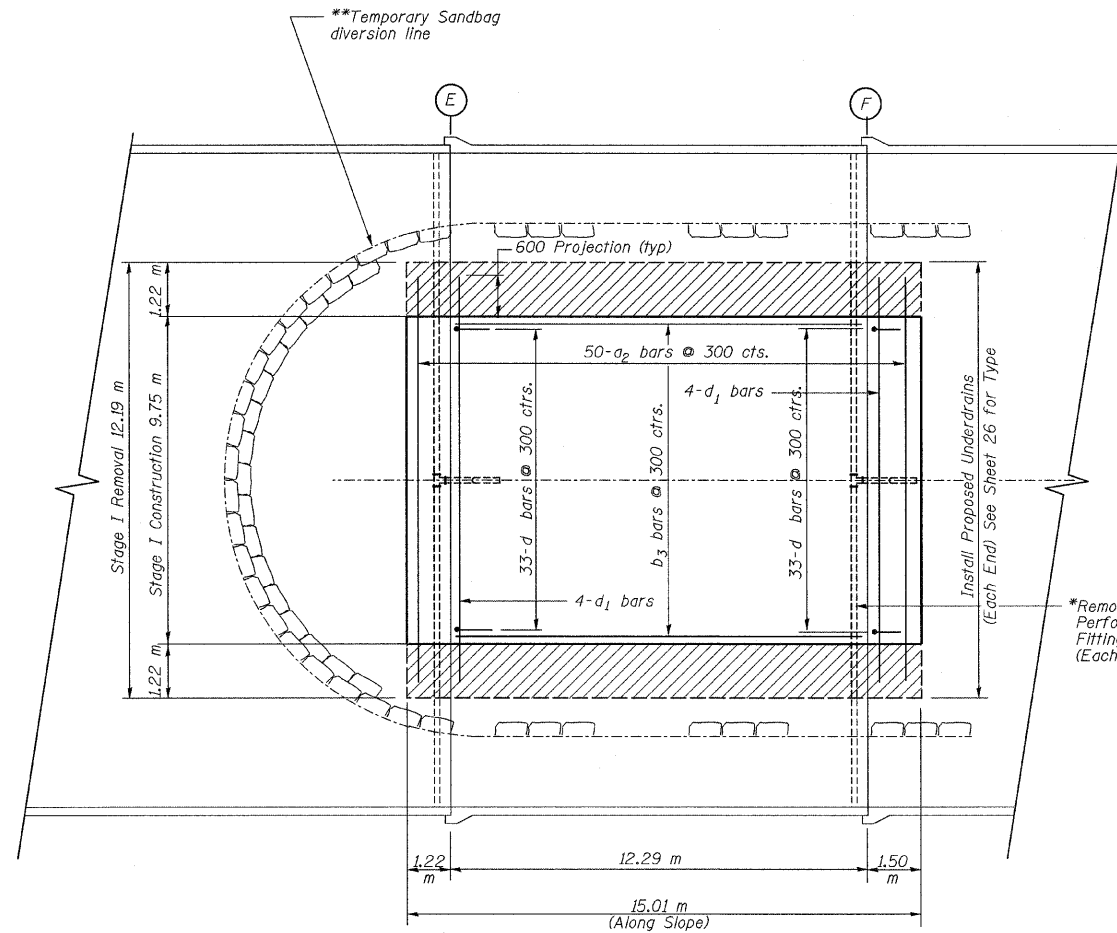
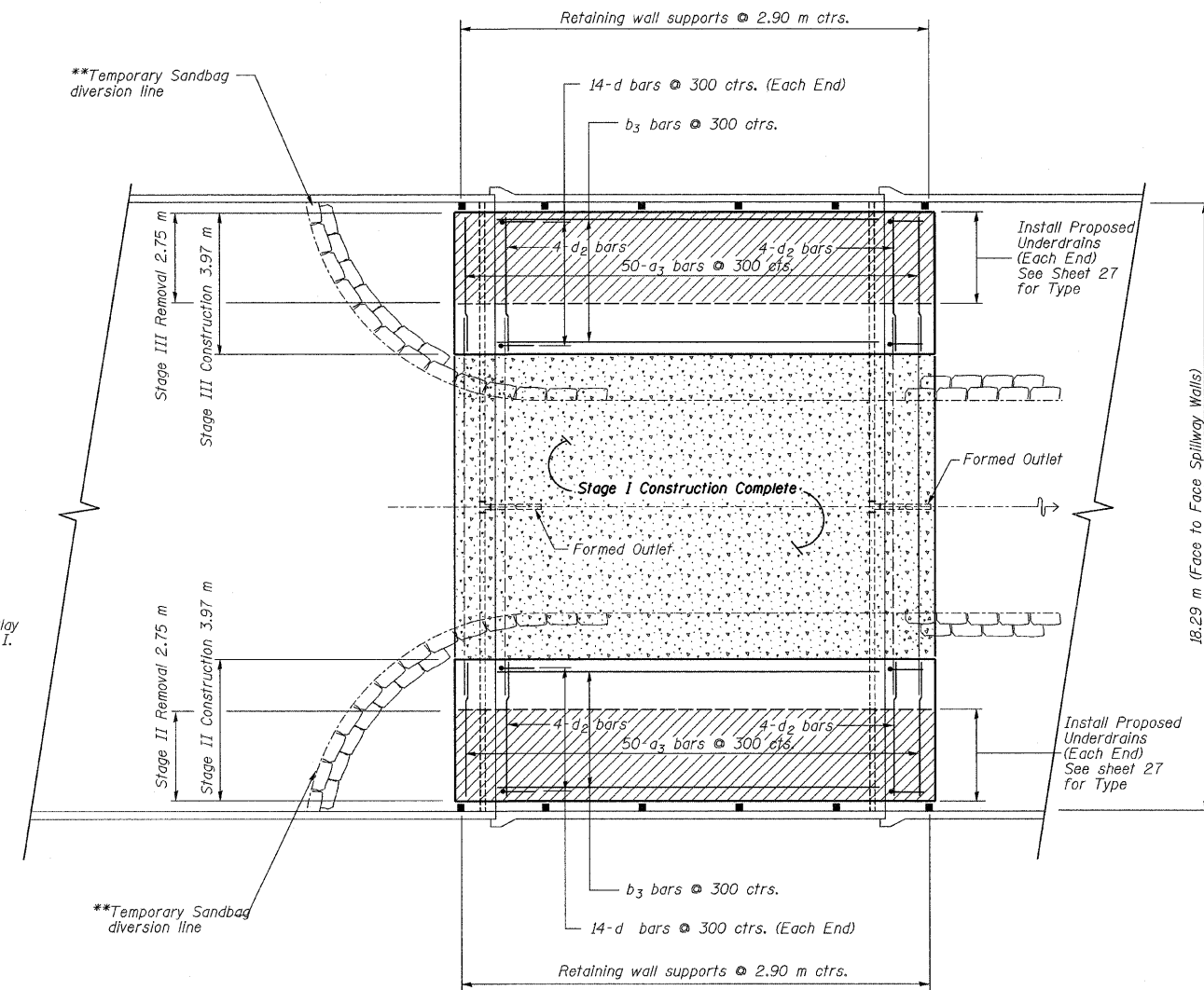


F.A. RTE.	SECTION	COUNTY	TOTAL SHEETS	SHEET NO.
204	92-00297-00-BR	ROCK ISLAND	31	30
STA. 0+270		TO STA. 0+340		
FED. ROAD DIST. NO. 7		ILLINOIS FED. AID PROJECT		



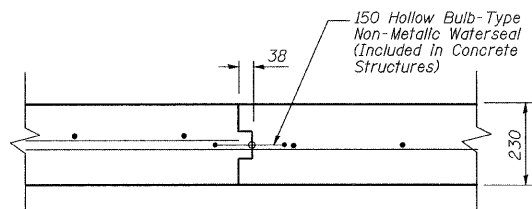
**STAGE I REINFORCING PLAN**



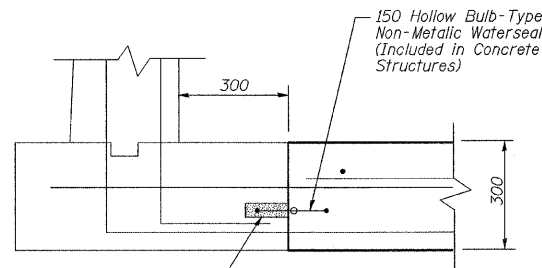
**STAGE II & III REINFORCING PLAN**

\* Cost Included in Concrete Removal & Earth Excavation.

\*\* Contractor shall maintain a dry excavation at all times. Divert flow accordingly during each staged construction. At no time during the project, can the spillway be completely blocked. Spillway flow shall be maintained. This work will not be paid for separately, but shall be included in the cost of Concrete Structures.



Detail 1  
30



Detail 2  
30

Epoxy new Water Seal into 50 wide sawcut groove. Epoxy to meet the requirements of ASTM C881, Type III, Grade 3. Prime Groove with an Epoxy meeting ASTM C881, Type III Grade 1.

REVISIONS	
NAME	DATE

ILLINOIS DEPARTMENT OF TRANSPORTATION  
**SPILLWAY SLAB REPAIR**  
**STAGED DETAIL PLAN**  
 C.H. 59 OVER  
 LAKE GEORGE SPILLWAY  
 ROCK ISLAND, COUNTY  
 DRAWN BY RAP  
 CHECKED BY JBF  
 DATE NOV. 2007