

F.A.S. RTE.	SECTION	COUNTY	TOTAL SHEETS	SHEET NO.
1274	05-00627-00-BR	LASALLE	45	10
STA. 18+80.00		TO STA. 27+00.00		
FED. ROAD DIST. NO.	ILLINOIS	FED. AID PROJECT		

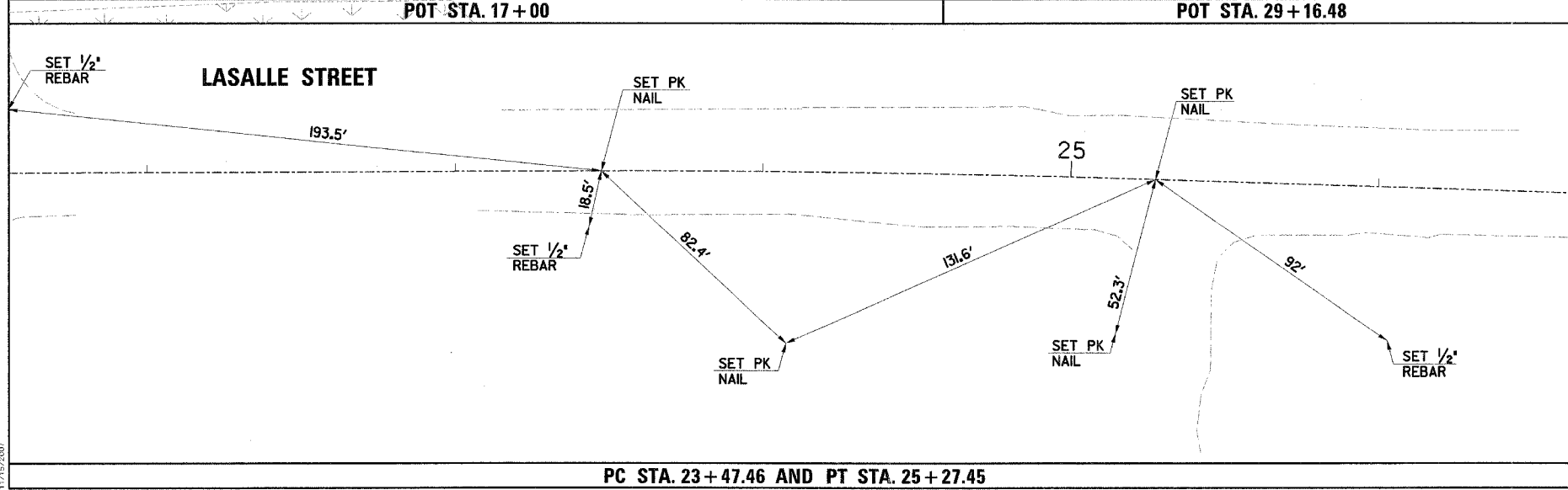
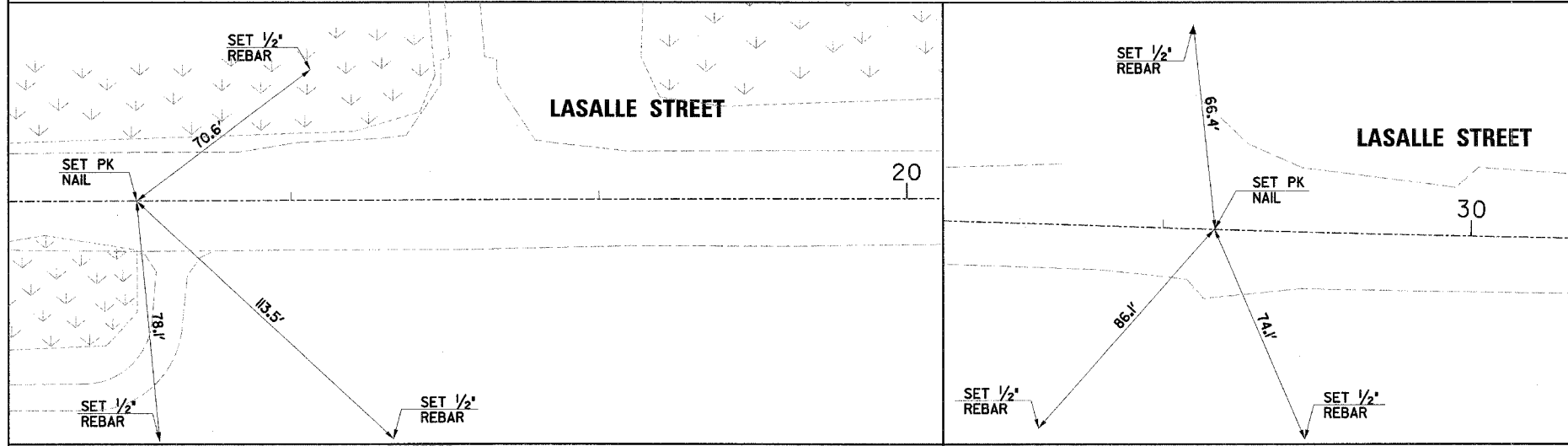
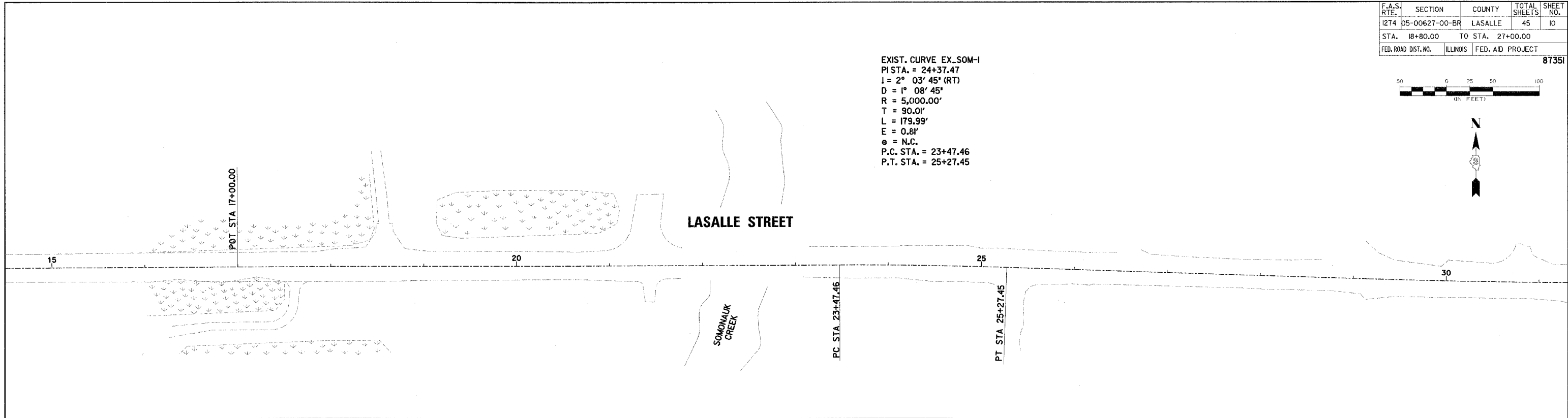
87351



EXIST. CURVE EX\_SOM-1  
 P.I. STA. = 24+37.47  
 I = 2° 03' 45" (RT)  
 D = 1° 08' 45"  
 R = 5,000.00'  
 T = 90.01'  
 L = 179.99'  
 E = 0.81'  
 e = N.C.  
 P.C. STA. = 23+47.46  
 P.T. STA. = 25+27.45

PLAN	SURVEYED	DATE
	BY	
	NOTED	
	BY	
	DATE	

PROFILE	SURVEYED	DATE
	BY	
	NOTED	
	BY	
	DATE	



**BENCHMARKS**

**BENCHMARK 1:**  
RAILROAD SPIKE IN UTILITY POLE ON THE SOUTH SIDE OF LASALLE STREET, EAST OF THE ENTRANCE TO THE WATERFRONT RESTAURANT AND 300 FEET +/- EAST OF THE CENTER OF THE BRIDGE OVER SOMONAUK CREEK. ELEVATION: 655.92

**BENCHMARK 2:**  
CHISELED SQUARE IN CONCRETE HEADWALL AT THE NORTHEAST CORNER OF THE LASALLE STREET BRIDGE OVER SOMONAUK CREEK NORTH OF LAKE HOLIDAY. ELEVATION: 649.88

ELEVATIONS ARE BASED ON THE THE VILLAGE OF SOMONAUK DATUM (INGVD 29).

REVISIONS	
NAME	DATE

ILLINOIS DEPARTMENT OF TRANSPORTATION  
**LASALLE STREET BRIDGE REPLACEMENT**

**ALIGNMENT TIES AND BENCHMARKS**

SCALE: VERT.      DRAWN BY  
 HORIZ.              CHECKED BY  
 DATE 11/16/07

PC STA. 23+47.46 AND PT STA. 25+27.45