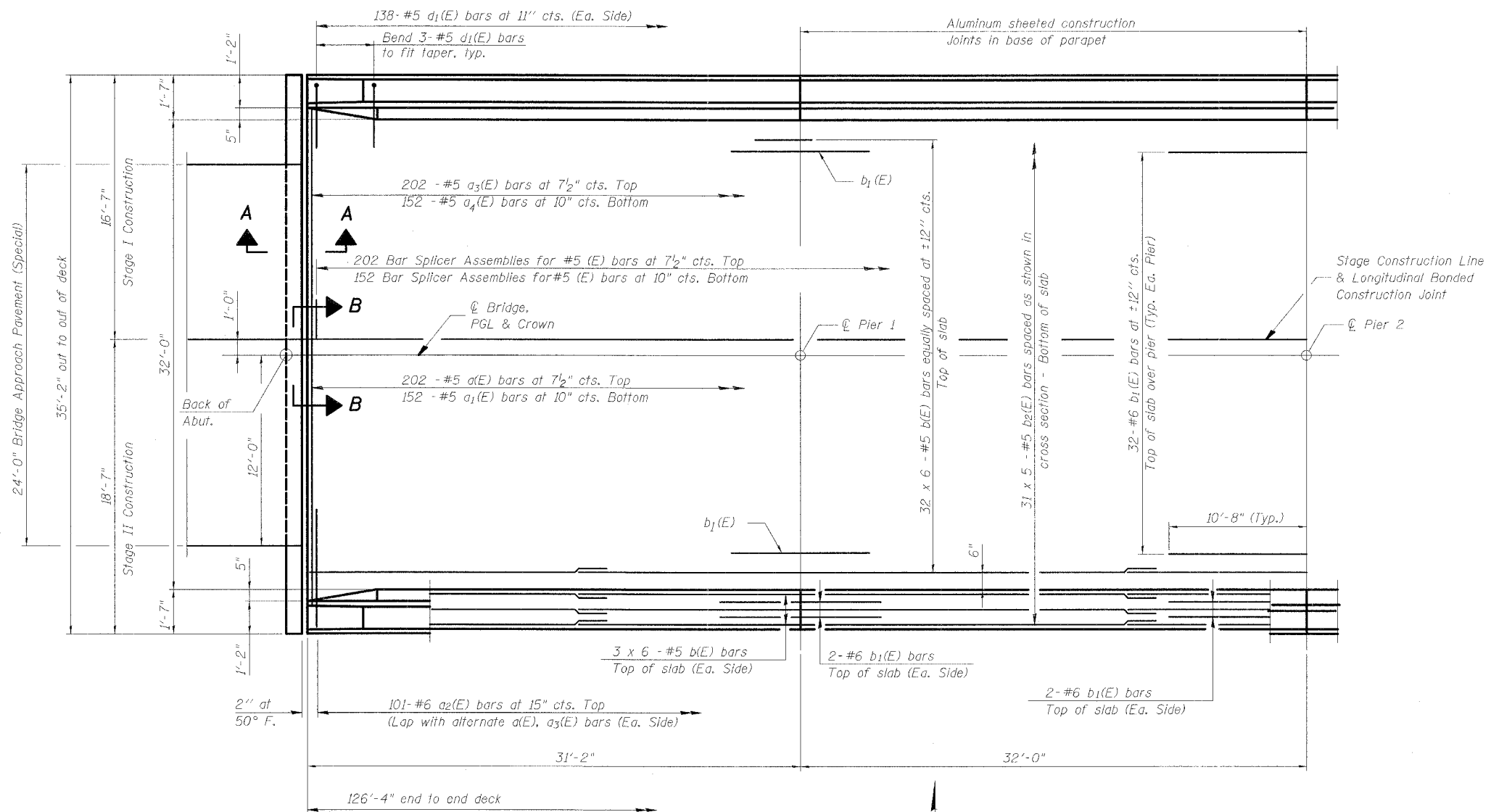


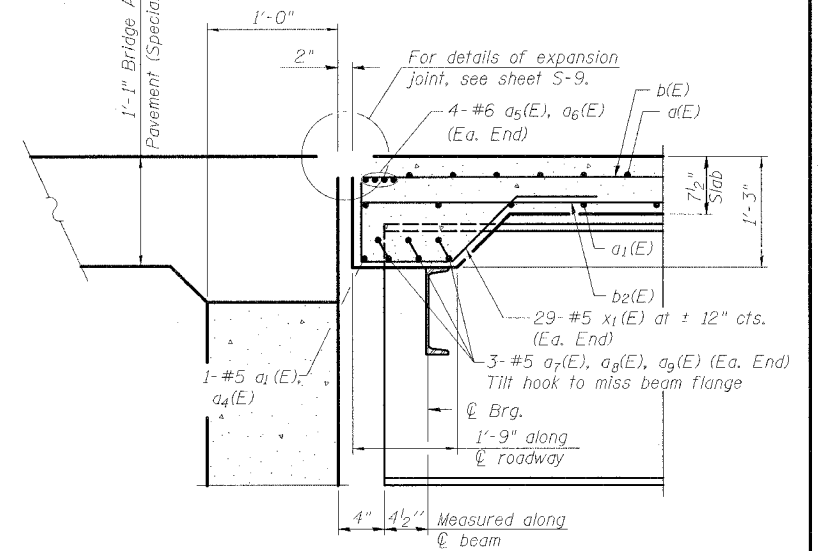
ROUTE NO.	SECTION	COUNTY	SHEET NO.	SHEET
FAS 1274	05-00627-00-BR	LASALLE	45	20
FED. ROAD DIST. NO.	ILLINOIS	FED. AID PROJECT		
1				

SHEET NO. S-7
S-16 SHEETS

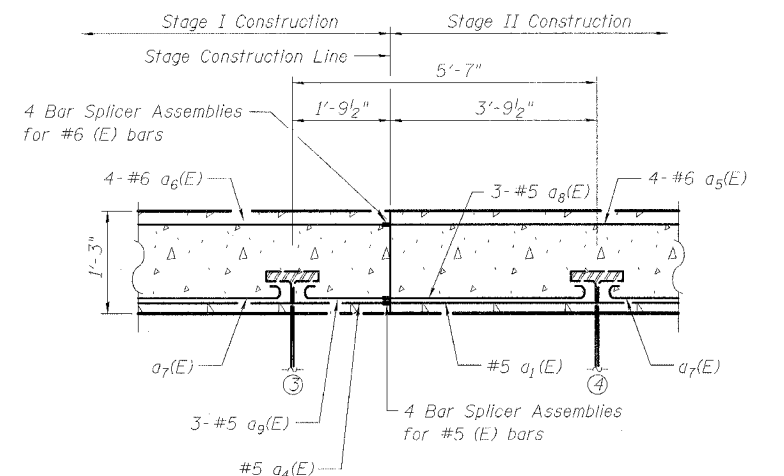
87351



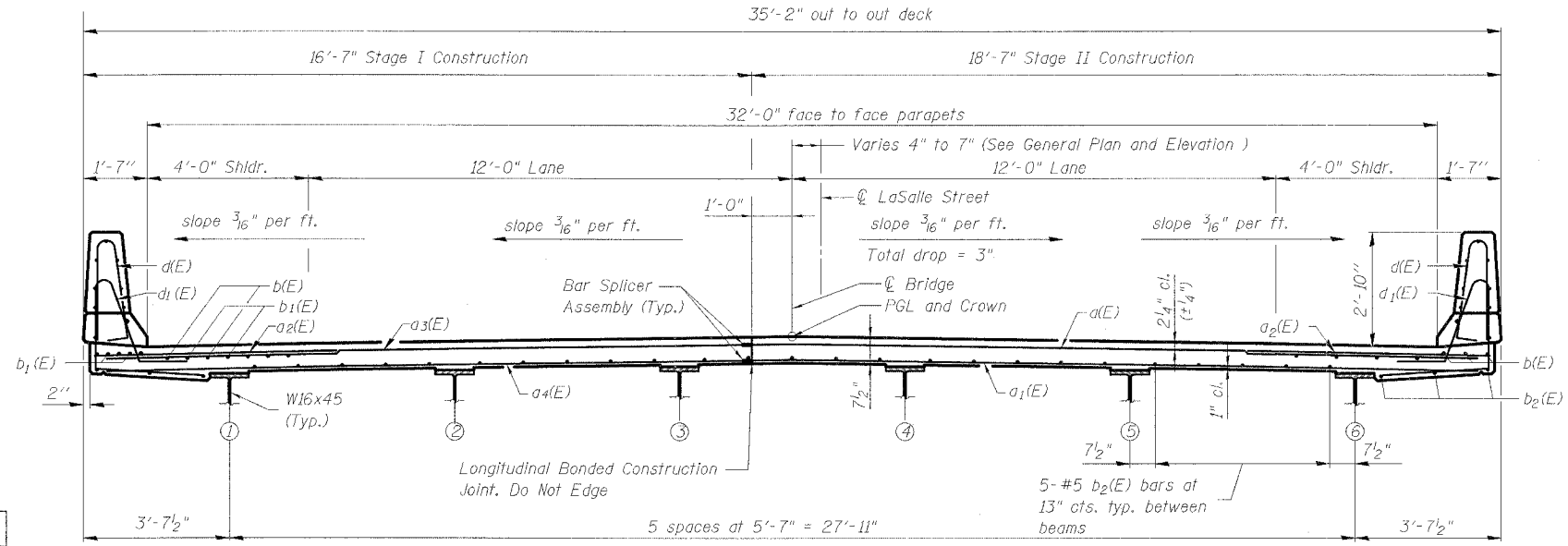
HALF PLAN
(Deck Plan Symmetric about Pier 2)



SECTION A-A



SECTION B-B



NEAR PIER

NEAR MIDSPAN

CROSS SECTION
(Looking East)

Notes:
See Sheet S-8 for superstructure details and Bill of Material.
Bars indicated thus 20 x 3-#5 etc. indicates 20 lines of bars with 3 lengths per line.
See Sheet S-8 for parapet reinforcement.
Dimensions are based on Rolled Rail Strip Seal Joint. If the Contractor elects to use Welded Rail Strip Seal Joint, deck dimensions may require adjustment to satisfy the details on the Expansion Joint Details Sheet.

MINIMUM BAR LAP
(Deck)
#4 bar = 1'-8"
#5 bar = 2'-2"
#6 bar = 2'-7"

DESIGNED	KMA
CHECKED	AEU
DRAWN	WJH
CHECKED	RGD

COMPANY NAME, REV. NO., CLIENT, PROJECT, SHEET NO.

Illinois Professional Design Firm # 184-000108
SEC GROUP, INC.
 Smith Engineering Consultants • SEC Automation • SEC Planning
 4500 Prime Parkway, Mchenry, IL 60050
 L 615.385.1778 F 615.385.1781
 www.secgroupinc.com engineering@secgroupinc.com

LASALLE COUNTY HIGHWAY DEPARTMENT
DECK PLAN AND CROSS SECTION
 LASALLE STREET
 OVER SOMONAUK CREEK
 VILLAGE OF SOMONAUK
 SECTION NO. 05-00627-00-BR
 STRUCTURE NO. 050-3057
 DATE 11-16-2007