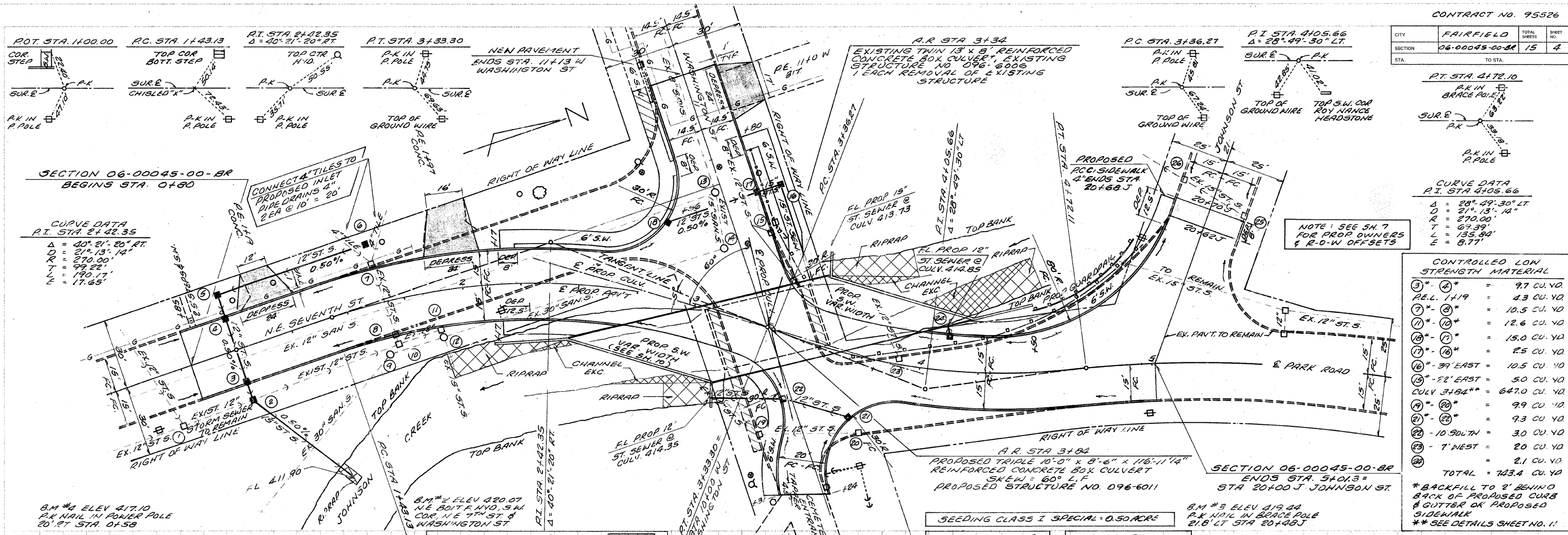


CITY	FAIRFIELD	TOTAL SHEETS	15	SHEET NO.	4
SECTION	06-00045-00-BR	TO STA.			



CURVE DATA
P.I. STA 4105.66

Δ	= 28° 49' 30" LT
D	= 21' 13' 14"
R	= 270.00'
T	= 67.39'
L	= 135.94'
E	= 8.77'

CONTROLLED LOW STRENGTH MATERIAL

⑨ - ④*	= 9.7 CU. YD
REL. 1119	= 4.3 CU. YD
⑦ - ③*	= 10.5 CU. YD
⑩ - ⑥*	= 12.6 CU. YD
⑬ - ⑧*	= 15.0 CU. YD
⑮ - ⑩*	= 2.5 CU. YD
⑯ - 39' EAST	= 10.5 CU. YD
⑰ - 22' EAST	= 5.0 CU. YD
CULV 3484**	= 647.0 CU. YD
⑲ - ⑫*	= 9.9 CU. YD
⑳ - ⑬*	= 9.3 CU. YD
㉑ - 10 SOUTH	= 3.0 CU. YD
㉒ - 7' NEST	= 2.0 CU. YD
㉓	= 2.1 CU. YD
TOTAL	= 743.4 CU. YD

* BACKFILL TO 2' BEHIND BACK OF PROPOSED CURB & GUTTER OR PROPOSED SIDEWALK
** SEE DETAILS SHEET NO. 11

PAVEMENT REMOVAL W/IC STA 20+62J TO 20+70J = 28
STA 0+80 TO STA 3+14 = 850
TOTAL = 878 SQ. YD

PAVEMENT REMOVAL (SPECIAL)
WASHINGTON ST. 10+13N TO 11+13N
PARK ROAD: EAST EDGE EXIST. CULV. TO 5+01.3
JOHNSON ST.: LT. 20+62J TO 20+62J
TOTAL = 1200 SQ. YD

P.C.C. PAVEMENT 8"
LT & RT STA 0+80 TO LT 20+62J = 1613
LT & RT 20+62J TO 20+70J = 29
TOTAL = 1636 SQ. YD

DRIVEWAY PAVEMENT REMOVAL

LT STA 1+19	= 24.1 SQ. YD
LT STA 1+97	= 29.2 SQ. YD
RT STA 1+00	= 28.1 SQ. YD
TOTAL	= 81.4 SQ. YD

P.C.C. DRIVEWAY PAVEMENT 6"

LT STA 1+19	= 24.6 SQ. YD
LT STA 1+97	= 40.4 SQ. YD
RT STA 1+00	= 29.4 SQ. YD
TOTAL	= 94.4 SQ. YD

SIDEWALK REMOVAL

LT STA 0+85	= 8 SQ. FT
LT STA 10+90N TO 11+13N	= 114 SQ. FT
LT STA 10+15N TO 9+52N	= 224 SQ. FT
LT STA 3+40 TO 3+59	= 95 SQ. FT
TOTAL	= 441 SQ. FT

P.C.C. COMBINATION CURB & GUTTER TYPE B-6.24

LT STA. 0+80 TO 11+13N	= 280 FT.
RT STA. 0+80 TO 2+69 CULV.	= 186 FT.
LT STA. 4+00 CULV. TO 20+70J	= 136 FT.
RT STA. 9+24N TO 5+01.3	= 169 FT.
LT STA. 9+31N TO 9+33N CULV.	= 56 FT.
RT STA. 10+14N CULV. TO 11+13N	= 99 FT.
TOTAL	= 926 FT.

COMBINATION CURB & GUTTER REMOVAL

LT STA 9+18N TO 10+15N	= 73 FT
RT STA 11+13N TO 20+62J	= 302 FT
RT STA 9+30N TO 5+01.3	= 158 FT
TOTAL	= 533 FT

P.C.C. SIDEWALK 4"

LT STA 0+85	= 8 SQ. FT.
LT STA 2+17 TO 11+13N	= 780 SQ. FT.
RT STA. 2+17 TO 2+69 CULV.	= 240 SQ. FT.
LT STA. 4+00 CULV. TO 20+62J	= 720 SQ. FT.
LT STA 9+31N TO 9+33N	= 330 SQ. FT.
RT STA 10+13N CULV. TO 10+15N	= 129 SQ. FT.
TOTAL	= 2507 SQ. FT.

SEEDING CLASS I SPECIAL - 0.50 ACRE

STORM SEWER TY. I RCC CL 4 12"

② - ③	= 5 FT
③ - ④	= 20 FT
④ - ⑤	= 8 FT
⑤ - ⑥	= 65 FT
⑦ - ⑩	= 39 FT
⑪ - ⑫	= 28 FT
⑬ - WING	= 31 FT
⑭ - CULV.	= 4 FT
TOTAL	= 208 FT

STORM SEWER TY. I RCC CL 4 15"

② - CREEK	= 54 FT
③ - CULV.	= 42 FT
④ - ⑦	= 8 FT
TOTAL	= 104 FT

STORM SEWER REMOVAL 15"

⑪ - CREEK	= 18 FT
TOTAL	= 18 FT

DRAINAGE STRUCTURES

LOCATION	TYPE	GRATE	INVERT
① 23.3' RT. 0+65	EXIST INLET TO REMAIN	416.89	412.88
② 22.0' RT. 1+00	INLET TA TIFCL	415.70	412.17
③ 14.8' RT. 1+00	INLET TA TIFLG	415.82	412.21
④ 14.8' LT. 1+00	INLET TA TIFLG	415.82	412.36
⑤ 25.0' LT. 1+00	INLET TA TIFCL	417.00	412.41
⑥ 25.0' LT. 1+67	INLET TA TIFCL	417.00	412.75
⑦ 15.0' LT. 1+67	EXIST INLET TO BE REMOVED		
⑧ 15.0' RT. 1+67	EXIST INLET TO BE REMOVED		
⑨ 22.0' RT. 1+64	EXIST SAN. M.H. TO REMAIN	416.70	
⑩ 20.0' RT. 1+67	EXIST INLET TO BE REMOVED		
⑪ 17.0' RT. 1+88	EXIST INLET TO BE REMOVED		
⑫ 20.0' RT. 1+88	EXIST SAN. M.H. TO REMAIN	416.60	
⑬ 3.0' LT. 10+33N	EXIST SAN. M.H. TO BE ADJ.	418.46	411.96
⑭ 6.0' LT. 10+33N	EXIST SAN. M.H. TO BE ADJ.	418.35	411.35
⑮ 14.5' RT. 10+38W	EXIST INLET TO BE REMOVED		
⑯ 25.0' RT. 10+56W	INLET TA TIFCL	417.40	414.15
⑰ 14.5' RT. 10+56W	INLET TA TIFLG	417.70	414.19
⑱ 27.0' LT. 10+56W	INLET TA TIFLG	417.52	414.18
⑲ 44.0' RT. 3+45	EXIST INLET TO BE REMOVED		
⑳ 32.0' RT. 3+40	EXIST INLET TO BE REMOVED		
㉑ 28.0' RT. 3+75	INLET TA TIFLG	417.99	414.65
㉒ 26.0' RT. 3+48	INLET TA TIFLG	418.03	414.51
㉓ 3.0' LT. 3+90	EXIST INLET TO BE REMOVED		
㉔ 15.0' LT. 4+12	INLET TA TIFLG	418.31	414.89
㉕ 15.0' RT. 20+72J	EXIST INLET TO REMAIN	418.37	
㉖ 15.0' LT. 20+77J	EXIST INLET TO REMAIN	418.38	

PAVEMENT FABRIC
LT & RT 0+80 TO LT 20+62J = 1613
LT & RT 20+62J TO 20+70J = 29
TOTAL = 1636 SQ. YD

GUARDRAIL REMOVAL

LT 3+07 TO LT 3+43	= 63 FT.
RT 3+22 TO RT 3+43	= 37 FT.
RT 3+70 TO LT 20+47J	= 137 FT.
TOTAL	= 237 FT.

STEEL PLATE BEAM GUARDRAIL, TYPE B 2 END SECTIONS (COST INCLUDED)
LT. 3+50 TO LT. 20+46J
TOTAL = 50 FT.

PROCESSING MODIFIED SOIL 12"
LT. & RT. STA. 0+80 TO 20+62 J
TOTAL = 1946 SQ. YD

LIME
LT. & RT. STA. 0+80 TO 20+62 J
TOTAL = 49 TON

STONE DUMPED RIPRAP CL A4

65' RT. STA. 1+30	= 2 TON
N.W. WINGWALL	= 21 TON
N.E. WINGWALL	= 18 TON
S.W. WINGWALL	= 15 TON
S.E. WINGWALL	= 15 TON
TOTAL	= 71 TON

DETECTABLE WARNINGS

LT 10+77W	= 10 SQ. FT.
RT 10+77W	= 10 SQ. FT.
LT 2+55	= 10 SQ. FT.
RT 2+55	= 10 SQ. FT.
LT 20+65J	= 10 SQ. FT.
TOTAL	= 50 SQ. FT.

STORM SEWER REMOVAL 12"

② - ⑩	= 66 FT.
⑦ - ⑨	= 28 FT.
⑮ - ⑰	= 18 FT.
⑱ - CULV.	= 24 FT.
㉑ - CREEK	= 6 FT.
㉒ - CREEK	= 22 FT.
㉓ - ㉔	= 42 FT.
TOTAL	= 206 FT.

P.C.C. SIDEWALK SPECIAL ON CULV. LT. = 834 SQ. FT. ON CULV. RT. = 872 SQ. FT. TOTAL = 1706 SQ. FT.

EARTHWORK SCHEDULE

EARTH EXCAVATION	= 32 CU. YD
EARTH EXCAVATION ADJUSTED 25%	= 24 CU. YD
CHANNEL EXCAVATION	= 54 CU. YD
CHANNEL EXCAVATION ADJUSTED 25%	= 41 CU. YD
EMBANKMENT	= 330 CU. YD
FURNISHED EXCAVATION	= 265 CU. YD