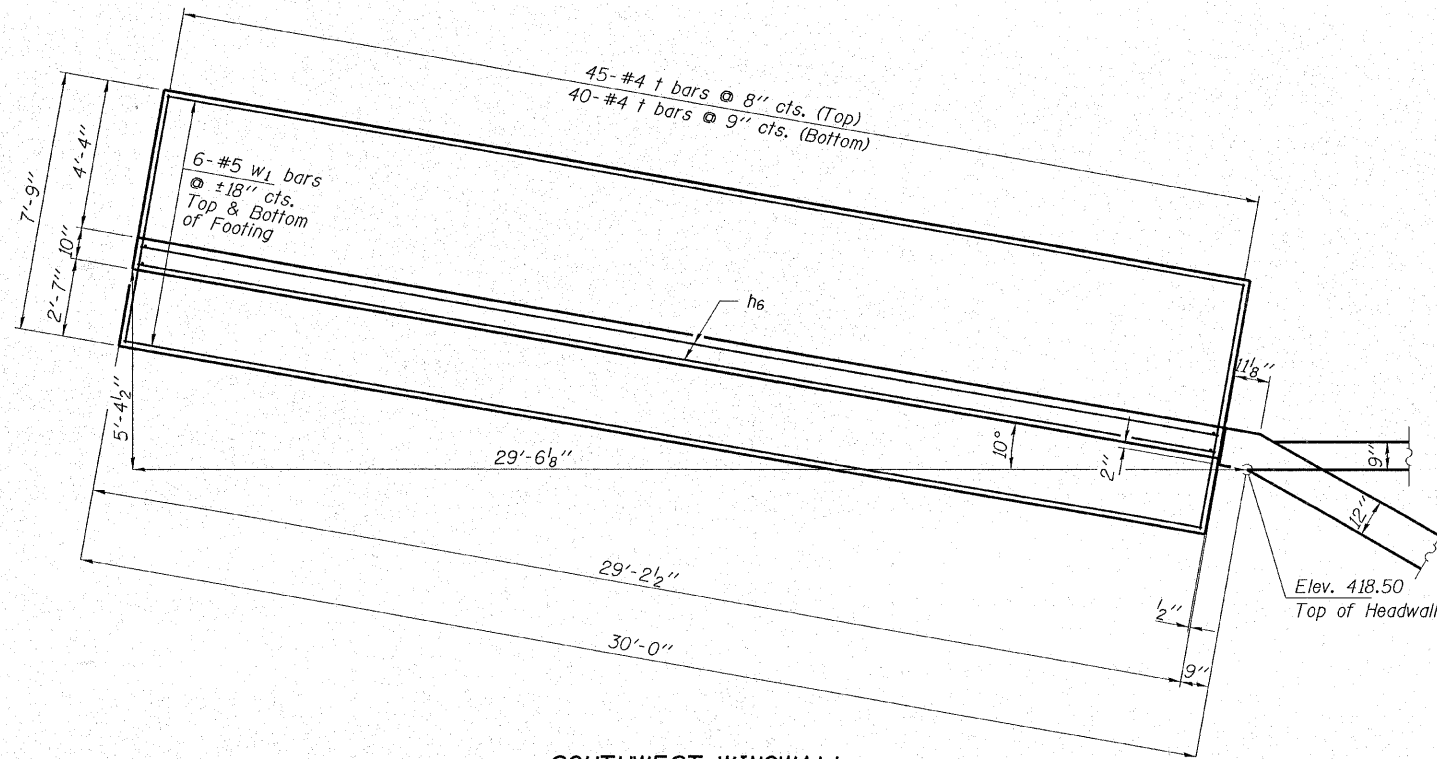
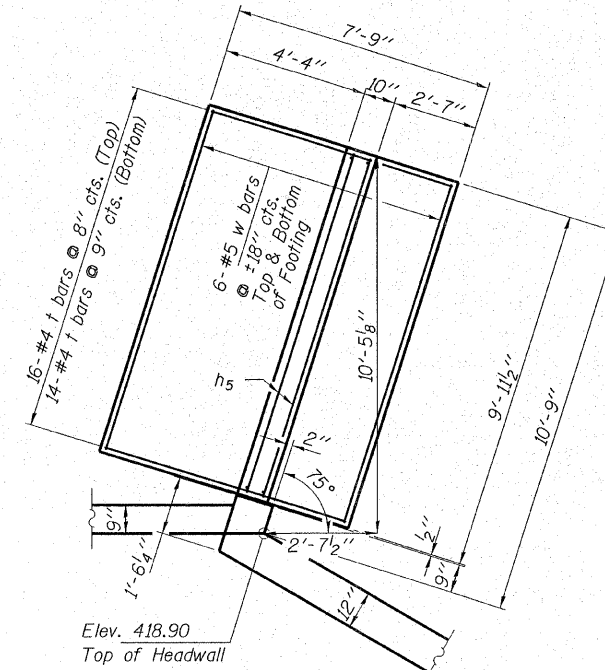


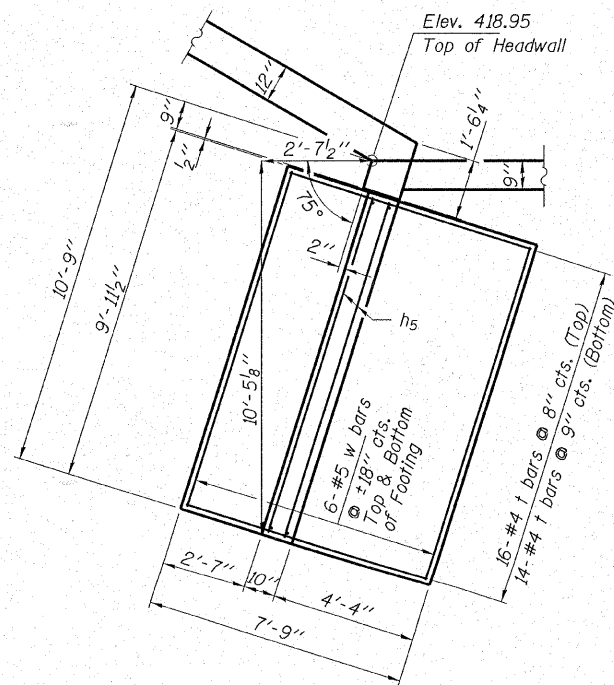
ROUTE NO. F.A.U. 8694	SECTION 06-00045 -00-BR	CITY FAIRFIELD	SHEETS 15	SHEET NO. 9
FED. ROAD DIST. NO.		ILLINOIS	FED. AID PROJECT-	



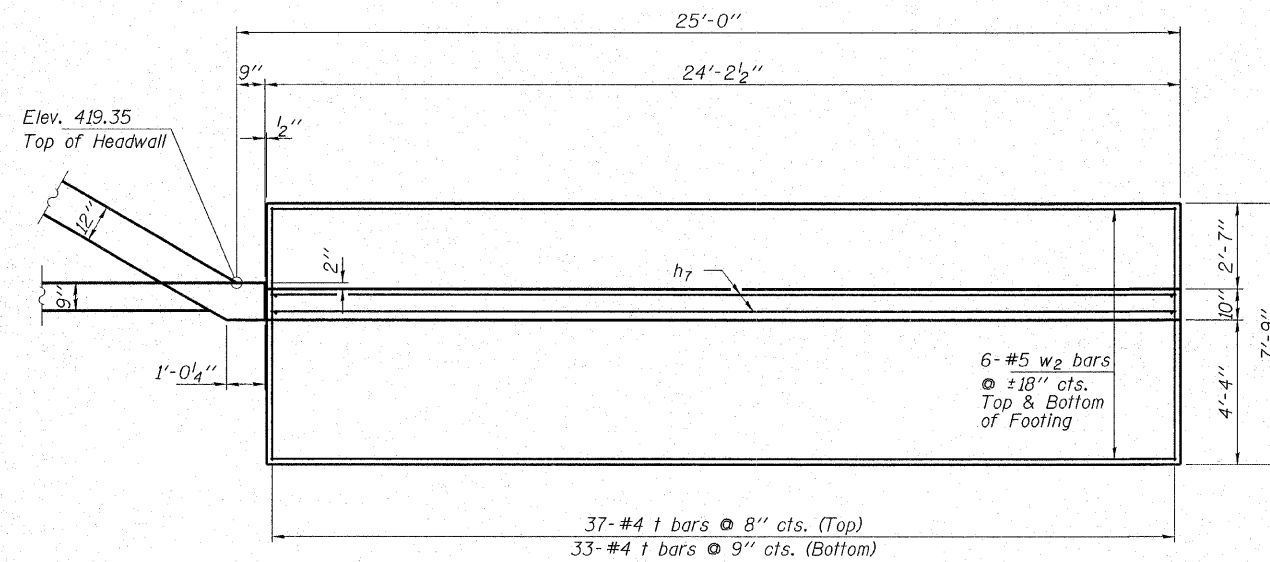
**SOUTHWEST WINGWALL**



**NORTHWEST WINGWALL**



**SOUTHEAST WINGWALL**



**NORTHEAST WINGWALL**

**BILL OF MATERIAL**

Bar	No.	Size	Length	Shape
a	272	#8	34'-6"	⊖
a1	272	#8	32'-8"	⊖
d	92	#4	5'-6"	└
h	292	#6	30'-8"	—
h1	102	#4	39'-9"	—
h2	272	#5	30'-4"	—
h3	32	#8	33'-6"	—
h4	16	#4	32'-2"	—
h5	42	#4	9'-7"	—
h6	21	#4	28'-10"	—
h7	21	#4	23'-10"	—
h8	48	#4	4'-8"	—
n	84	#6	6'-2"	┌
n1	80	#5	4'-3"	┌
s	109	#4	4'-9"	□
s1	109	#4	4'-7"	□
s2	36	#4	5'-1"	□
s3	199	#4	3'-7"	□
t	215	#4	7'-6"	—
v	488	#5	8'-6"	—
v1	488	#5	3'-5"	—
v2	8	#4	9'-3"	—
v3	8	#4	5'-8"	—
v4	31	#5	11'-5"	—
v5	4	#5	9'-5"	—
v6	4	#5	7'-9"	—
v7	12	#4	12'-9"	—
v8	37	#5	10'-8"	—
v9	4	#5	9'-0"	—
v10	4	#5	7'-4"	—
v11	12	#4	12'-4"	—
w	24	#5	9'-7"	—
w1	12	#5	28'-10"	—
w2	12	#5	23'-10"	—

**MIN. BAR LAPS**

- #4 - 1'-4" (Barrel)
- #5 - 1'-8" (Barrel)
- #6 - 2'-0" (Barrel)
- #6 - 2'-7" (Wingwalls)
- #8 - 3'-8" (Barrel)

All reinforcement bars shall be epoxy coated.  
See Sheet 7 of 8 for Railing Inserts. Price included with Aluminum Railing.  
See Sheet 4 of 8 for Corner Details.

**HAMPTON, LENZINI & RENWICK, INC.**  
CIVIL & STRUCTURAL ENGINEERS  
LAND SURVEYORS

**HLR**

3085 STEVENSON DRIVE, SUITE 201  
SPRINGFIELD, ILLINOIS 62703  
(217) 546-3400

ELGIN • SPRINGFIELD

PROJECT NUMBER: 12-97-0008-1    DATE: 03/20/07  
DESIGNED: S.M.S.    CHECKED: S.W.M.    DRAWN: D.A.B.

**CULVERT DETAILS**  
SECTION 06-00045-00-BR  
CITY OF FAIRFIELD  
F.A.U. 8694 / WASHINGTON STREET  
STRUCTURE NO. 096-6011 / STATION 3+34