

Route	Section	County	Sheet of Total Sheets	
TR 437	04-07120-00-BR	SHELBY	1	17
ILLINOIS PROJECT		BROS - 173 (112)		

STATE OF ILLINOIS
DEPARTMENT OF TRANSPORTATION

PLANS FOR PROPOSED
HIGHWAY BRIDGE PROGRAM

SHELBY COUNTY
SECTION 04-07120-00-BR
PROJECT BROS-173(112)
JOB NO. C-97-017-08

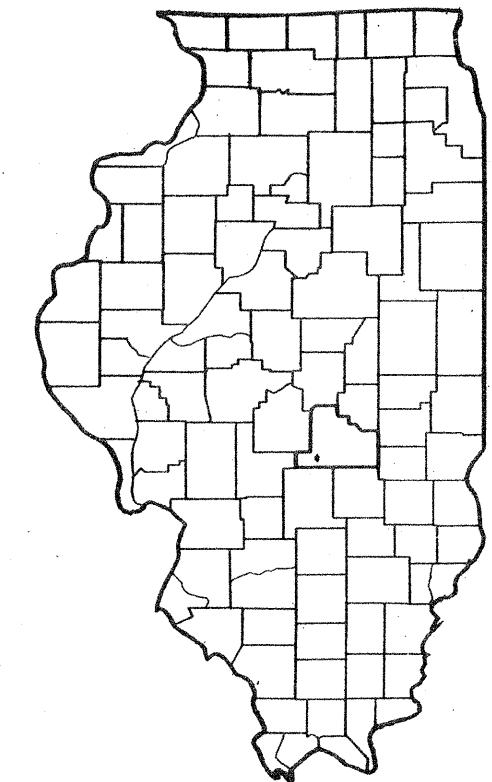
HERRICK TOWNSHIP
TR - 437

INDEX OF SHEETS

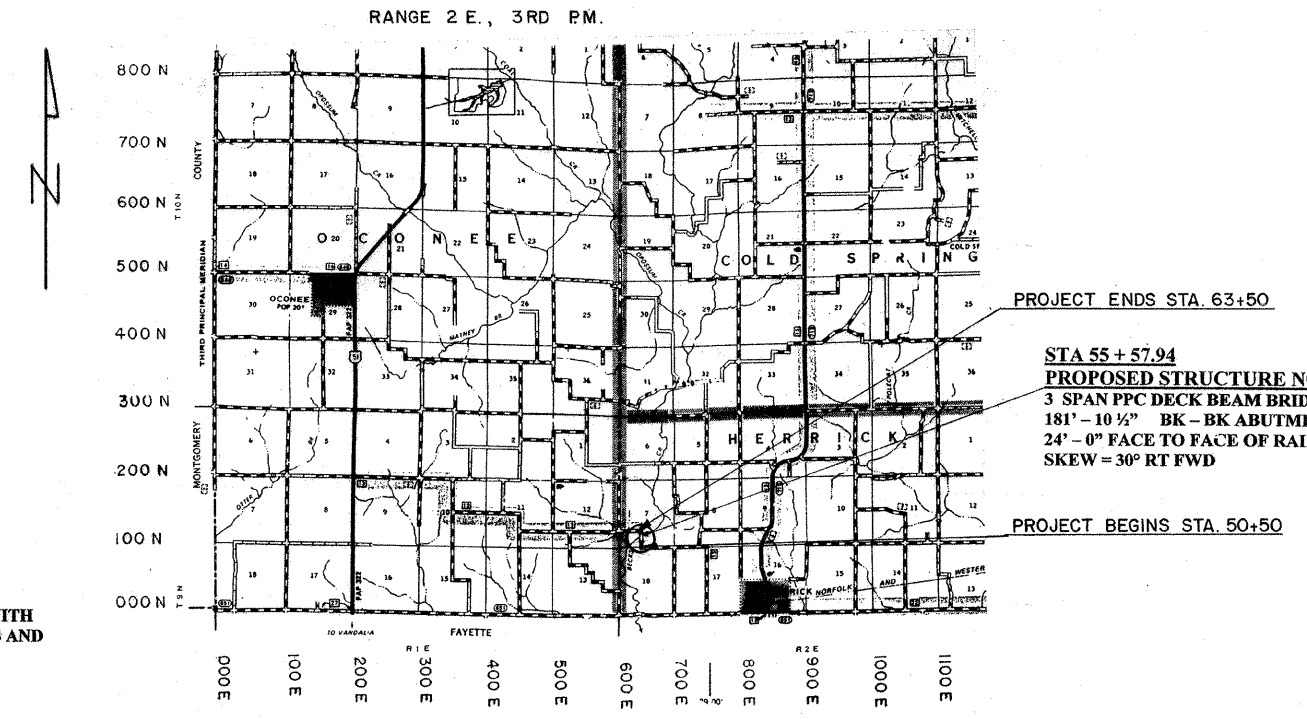
- 1) COVER SHEET
- 2) SCHEDULE OF QUANTITIES AND GENERAL NOTES
- 3) TYPICAL SECTIONS AND DETAILS
- 4) EROSION CONTROL PLAN
- 5-6) PLAN AND PROFILE SHEETS
- 7-9) CROSS SECTION
- 10-17) BRIDGE PLANS

STANDARDS

STANDARD NUMBER	STANDARD NAME
000001-05	STANDARD SYMBOLS, ABBREVIATIONS AND PATTERNS
280001-04	TEMPORARY EROSION CONTROL SYSTEMS
5150001-02	NAME PLATE FOR BRIDGES
542401	METAL END SECTION FOR PIPE CULVERT
542406	METAL END SECTIONS FOR PIPE ARCHES
635006-02	REFLECTOR AND TERMINAL MARKER
666001	RIGHT OF WAY MARKERS
701006-02	OFF ROAD OPERATIONS 2L, 2W, 15' TO 24" FROM PAVEMENT EDGE
701901	TRAFFIC CONTROL DEVICES
BLR-21-7	TYPICAL APPLICATION OF TRAFFIC CONTROL DEVICES FOR CONSTRUCTION ON RURAL LOCAL HIGHWAYS



LOCATION OF SECTION INDICATED THIS -



PROJECT ENDS STA. 63+50

STA 55 + 57.94
PROPOSED STRUCTURE NO. 087-3546
3 SPAN PPC DECK BEAM BRIDGE
181' - 10 1/2" BK - BK ABUTMENT
24' - 0" FACE TO FACE OF RAIL
SKEW = 30° RT FWD

PROJECT BEGINS STA. 50+50

STA 55 + 55
EXISTING STRUCTURE NO. 087-3018
THREE SPAN TIMBER DECK ON STEEL STRINGERS WITH
CLOSED TIMBER ABUTMENTS, TIMBER WINGWALLS AND
TIMBER PILE BENT PILES
129' - 0" BK - BK OF ABUTMENT

LOCATION MAP
NET LENGTH OF SECTION = 1,300 FEET = 0.246 MILES

Plans Prepared by: *S. Alan Spesard*
Date: 10-27-07
S. ALAN SPESARD
Illinois Professional No. 062-052965
Expires on 11-30-07



Approved	10-29	2007
	<i>Ralph Bohm</i>	Township Highway Commissioner
Approved	10-29	2007
	<i>S. Alan Spesard</i>	County Engineer
Passed	11-2	2007
	<i>Maurice Koval</i>	District Engineer of Local Roads & Streets
Releasing For Bid Based on Limited Review	11-2	2007
	<i>Chris J. Koval</i>	Deputy Director of Highways, Regional Engineer Region 4

Contract No. 95528

FUNCTIONAL CLASSIFICATION: RURAL LOCAL ROAD
DESIGN YEAR: 2027
CURRENT ADT = 175
DESIGN ADT = 225
DESIGN SPEED = 30 MPH

Toll Free Joint Utility Locating
Information For Excavators (J.U.L.I.E.)
Telephone Number 1-800-892-0123

Shelby County Highway Department
R.R. 3, Box 38 A
Shelbyville, IL 62565
Phone (217) 774-2721