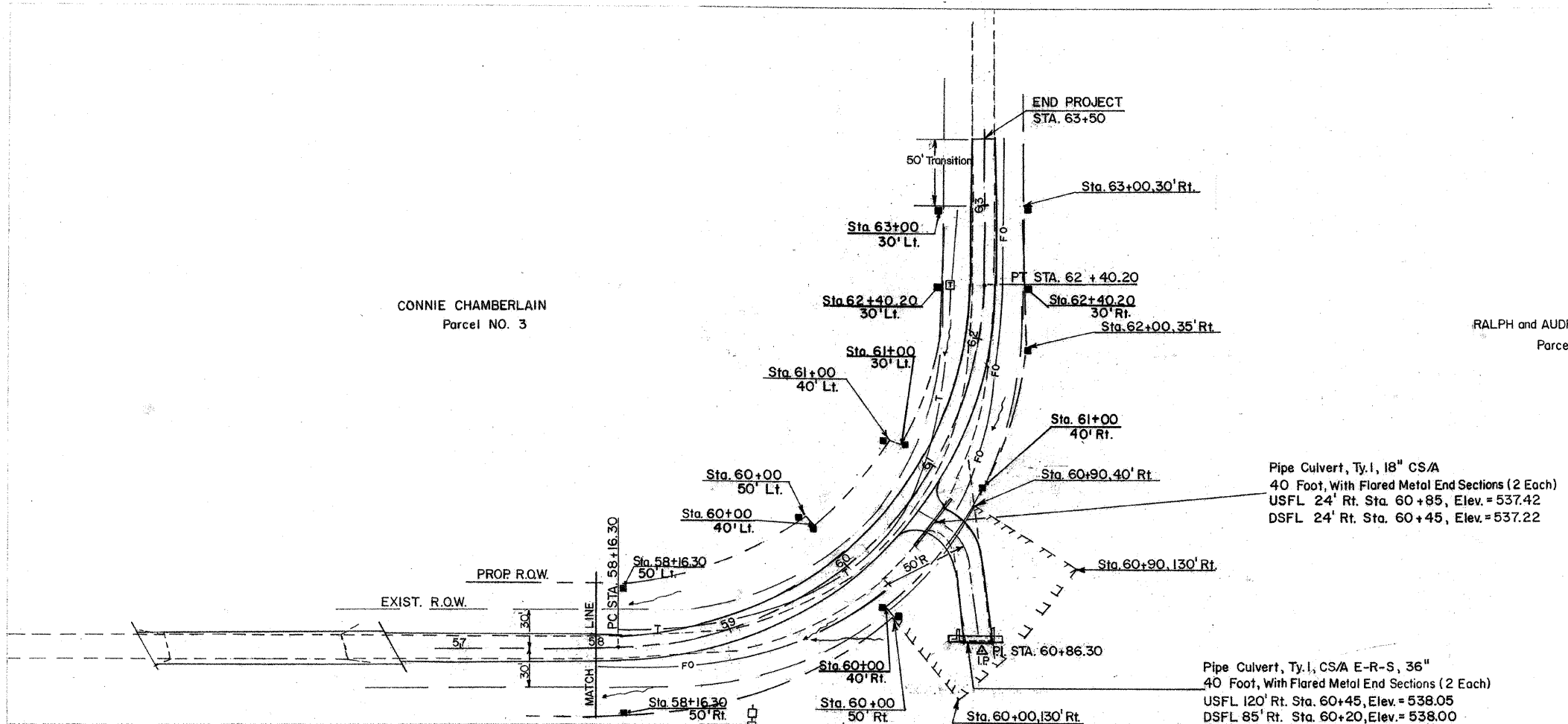


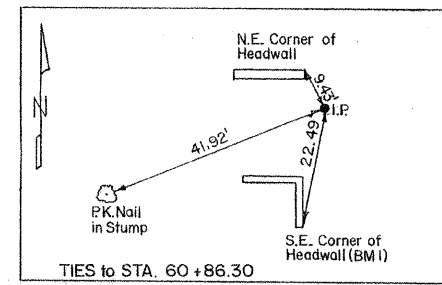
CURVE DATA
 $\Delta = 90^{\circ}-04'-40''$
 $T = 270.00'$
 $R = 269.63'$
 $L = 423.90'$
 $D = 12^{\circ}-15'-00''$
 $E = 111.95'$
 S.E. Transition Sta. 57+50 to 58+50
 Super Elev. 0.05'/ft. Sta. 58+50 to 62+07
 S.E. Transition Sta. 62+07 to 63+07



Pipe Culvert, Ty. I, 18" CS/A
 40 Foot, With Flared Metal End Sections (2 Each)
 USFL 24' Rt. Sta. 60+85, Elev. = 537.42
 DSFL 24' Rt. Sta. 60+45, Elev. = 537.22

Pipe Culvert, Ty. I, CS/A E-R-S, 36"
 40 Foot, With Flared Metal End Sections (2 Each)
 USFL 120' Rt. Sta. 60+45, Elev. = 538.05
 DSFL 85' Rt. Sta. 60+20, Elev. = 538.00

Note: Existing 4x2' concrete box culvert to be removed



BM 1 = Chiseled Square on S.E. Corner of S.E. Headwall
 Elev. = 542.54

