

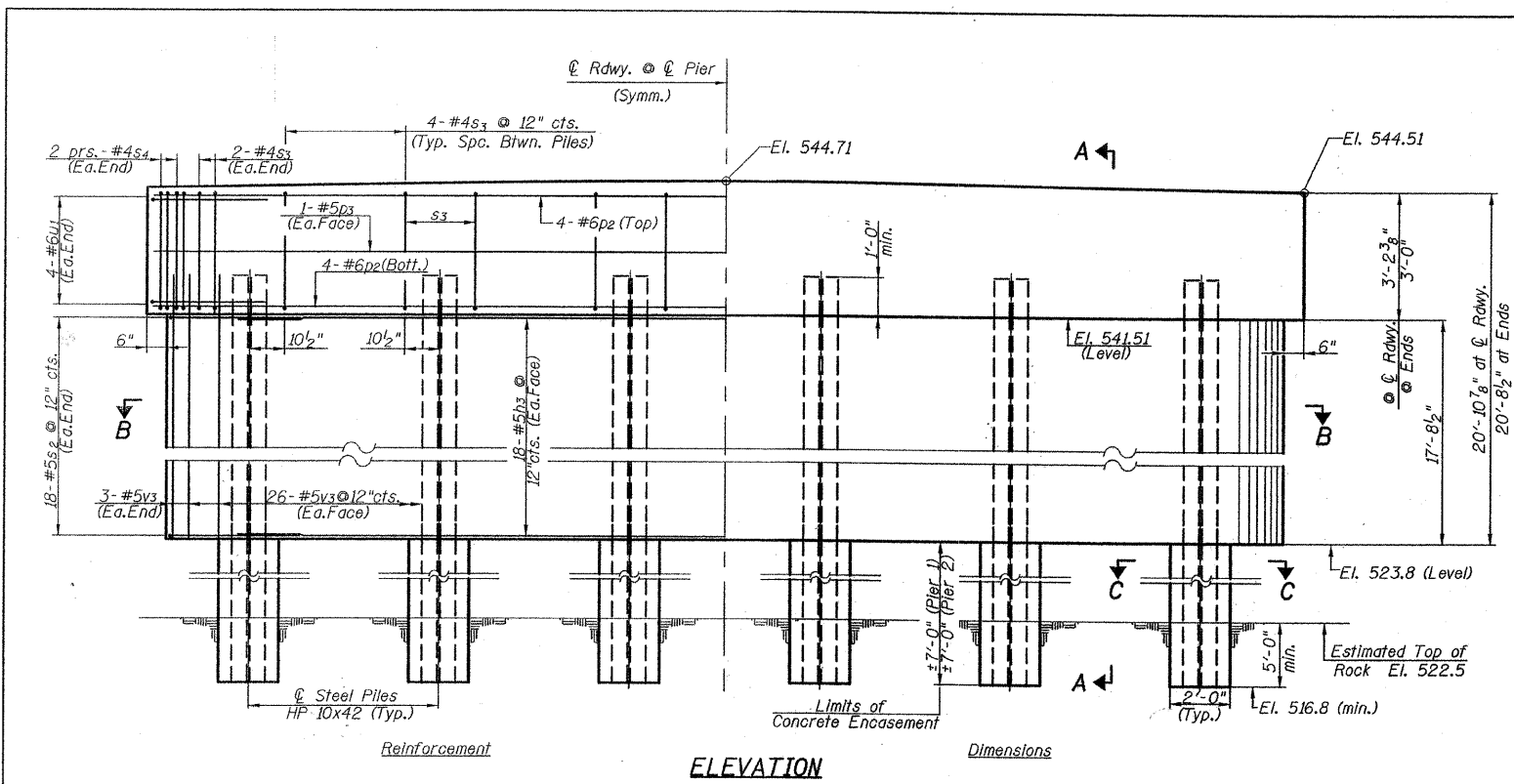
T.R. RTE.	SECTION	COUNTY	TOTAL SHEETS	SHEET NO.
437	04-07120-00-BR	SHELBY	17	16
STA. 51+10		TO STA. 63+50		
FED. ROAD DIST. NO. ILLINOIS		FED. AID PROJECT		

PILE DATA
PIER 1 PIER 2

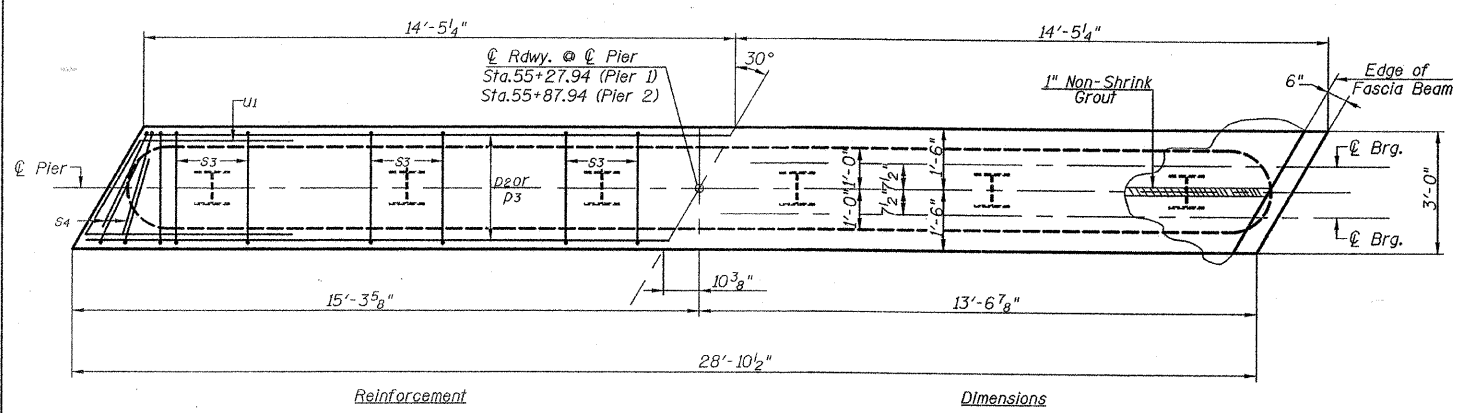
Pile Type & Size:	Steel HP 10x42	Steel HP 10x42
Nominal Required Bearing:	335 Kips	335 Kips
Allowable Resistance Available:	111 Kips	111 Kips
Estimated Pile Length:	27'	27'
Number of Piers:	6	6

The Steel H-Piles shall be according to AASHTO M270 Grade 50.

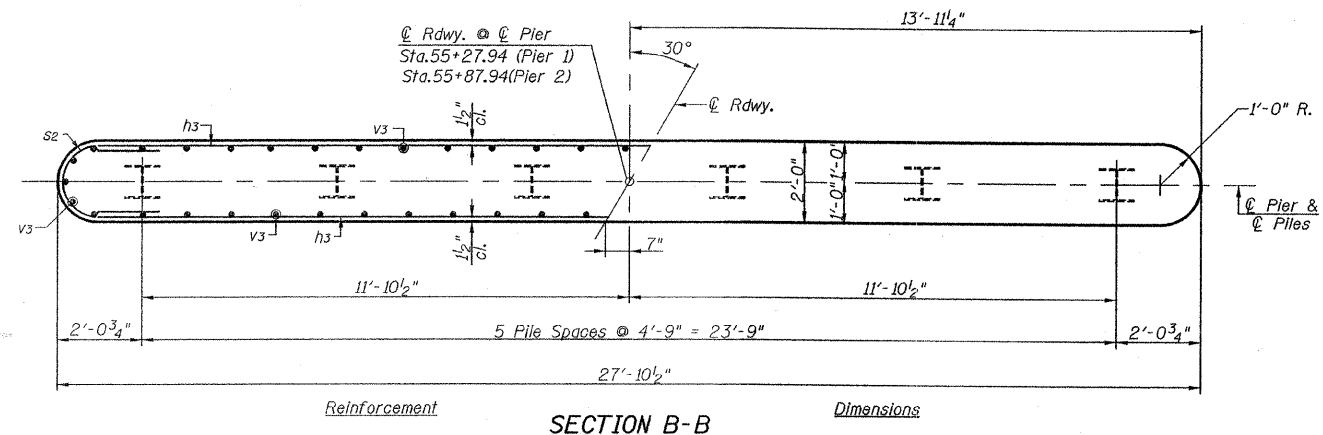
NOTES
 All exposed concrete edges shall have standard 3/4" chamfer except as noted.
 Space reinforcement in pier caps to miss beam anchor dowels.



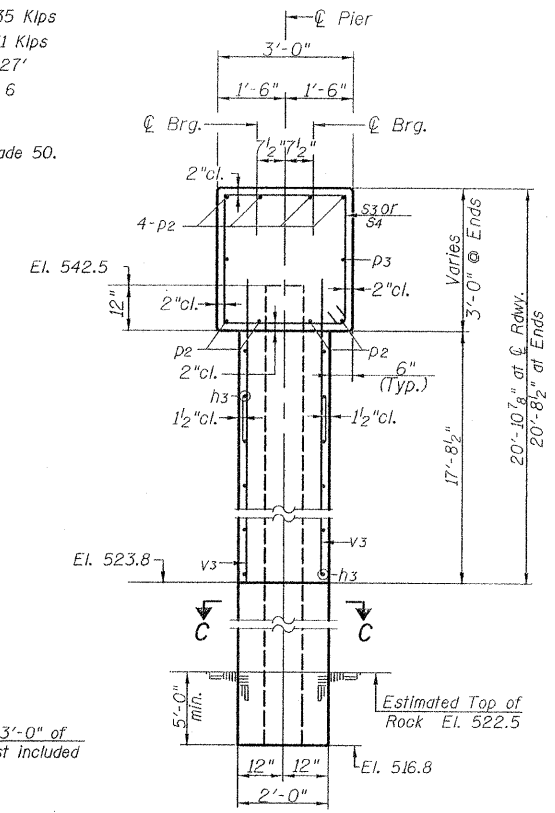
ELEVATION



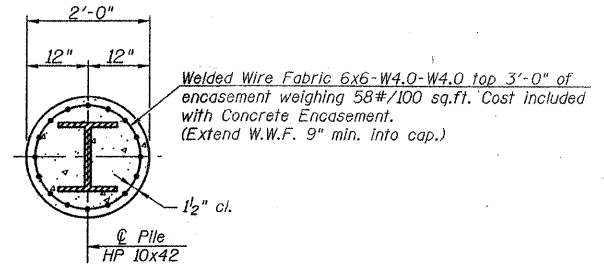
PLAN



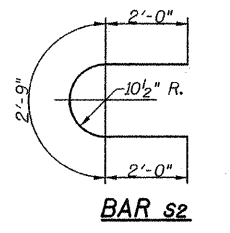
SECTION B-B



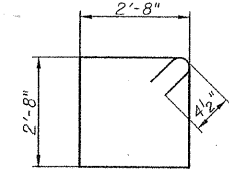
SECTION A-A



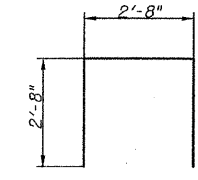
SECTION C-C



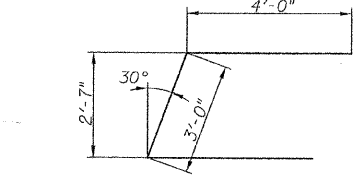
BAR S2



BAR S3



BAR S4



BAR U1

BILL OF MATERIAL - TWO PIERS

BAR	NO.	SIZE	LENGTH	SHAPE	
h3	72	#5	25'-9"	—	
p2	16	#6	28'-6"	—	
p3	4	#5	28'-6"	—	
s2	72	#5	6'-9"	C	
s3	48	#4	11'-5"	□	
s4	16	#4	8'-0"	□	
u1	16	#6	11'-0"	—	
v3	116	#5	19'-0"	—	
Concrete Structures				Cu. Yd.	92.0
Reinforcement Bars				Pound	6260
Furnishing Steel Piles HP 10x42				Foot	324
Setting Piles in Rock				Each	12
Underwater Structure Excavation Protection- Location 1 (Pier 1)				Each	1
Underwater Structure Excavation Protection- Location 2 (Pier 2)				Each	1
Structure Excavation				Cu. Yd.	43
Concrete Encasement				Cu. Yd.	1.8

PIERS
 T.R. 437 OVER BECKS CREEK
 SECTION 04-07120-00-BR
 SHELBY COUNTY

PLOT DATE = 8/17/88
 DRAWN BY = JHE
 MODEL NAME = BRIDGE.PIG