

INDEX OF SHEETS

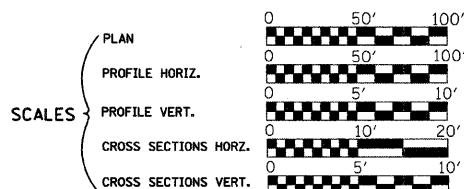
- 1 Cover Sheet
- 2 Summary of Quantities, General Notes, and Typical Sections
- 3 Plan and Profile
- 4 Horizontal Layout
- 5 Entrance Details
- 6-9 Station Cross Sections
- 10-14 Bridge Plans

STATE OF ILLINOIS  
DEPARTMENT OF TRANSPORTATION  
DIVISION OF HIGHWAYS  
PLANS FOR PROPOSED  
LOCAL AGENCY IMPROVEMENT

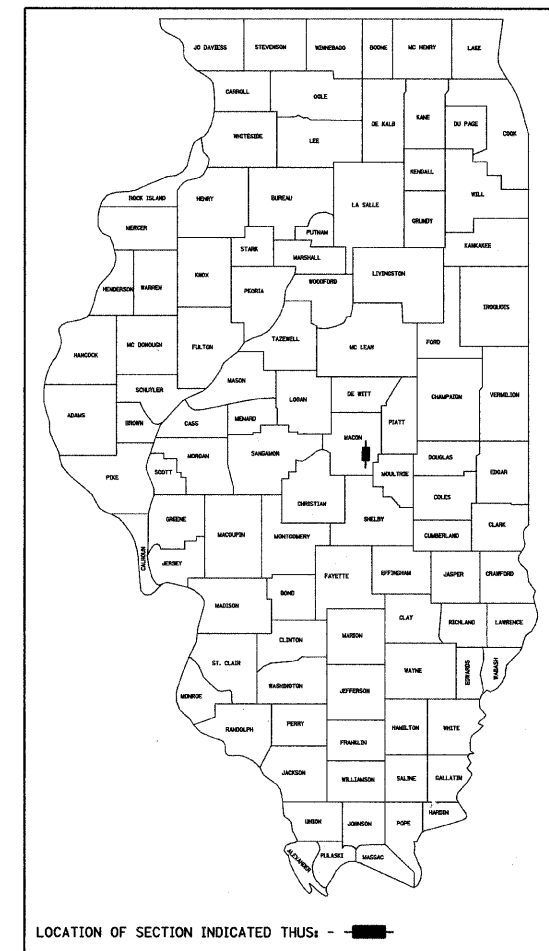
RTE. NO.	SECTION	COUNTY	TOTAL SHEETS	SHTS. NO.
T.R. 256	06-1116-00-BR	MACON	14	1
FED. ROAD DIST. NO.	ILLINOIS	PROJECT: BROS-115(63)		

CONTRACT NO. 95530

- LIST OF STANDARDS
- Standard 000001-05 Standard symbols, abbreviations and patterns
  - Standard 280001-04 Temporary erosion control systems
  - Standard 515001-02 Name plate for bridges
  - Standard 542306-01 Precast Reinforced Concrete Elliptical Flared End Section
  - \*Standard 542311 Grating For Concrete Flared End Section
  - ~~Standard 630001-07 Steel Plate Beam Guardrail Deleted 12.20.07~~
  - Standard 630301-04 Shoulder Widening For Type 1 (Special) Guardrail Terminals
  - Standard 631011-04 Traffic Barrier Terminal, Type 2
  - Standard 635006-02 Reflector and Terminal Marker Placement
  - Standard 665001-01 Woven Wire Fence
  - Standard 701011-01 Off-road moving operations, 2-l, 2-w, day only, for speeds > 45 mph
  - Standard 701301-02 Lane closure, 2-l, 2-w, short time operations
  - Standard 701901 Traffic control devices
  - Standard BLR-21-7 Typical application of traffic control devices for Construction on Rural Local Highways
  - Standard BLR-22-5 Typical application of traffic control devices 2-l, 2-w, rural, Road closed to Thru Traffic
  - Standard BLR-27 Traffic Barrier Terminal, Type 5A
  - \*Grating dimensions to be modified to fit "PRCF END S EL EQRS 60".
  - Standard BLR-26 Steel Plate Beam Guardrail



HIGHWAY BRIDGE PROGRAM  
T.R. 256 OVER BIG CREEK  
SECTION 06-1116-00-BR  
MACON COUNTY  
PROJECT BROS-115(63)  
C-97-021-08

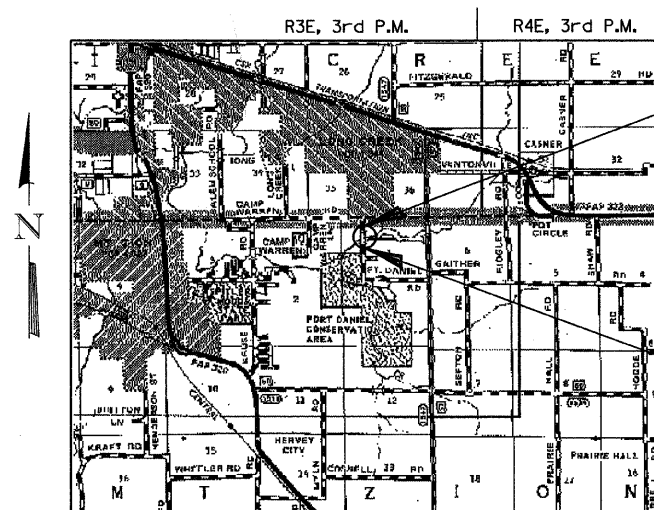


ROADWAY CLASSIFICATION: LOCAL STREET (URBAN)  
2005 ADT = 550 (2026 ADT = 750)  
DESIGN SPEED: 30 MPH

JOINT UTILITY LOCATING INFORMATION FOR EXCAVATORS  
J.U.L.I.E. Telephone No. Toll Free 1-800-892-0123

CONTRACT NO. : 95530

**URS**  
345 EAST ASH AVENUE, SUITE B  
DECATUR, ILLINOIS 62526  
PH. 217-875-4800



IMPROVEMENT ENDS  
STA. 17+15.00

EXIST. STR. NO. 058-3168  
PROP. STR. NO. 058-3389

IMPROVEMENT BEGINS  
STA. 12+85.00

LAYOUT

Approximate Scale: scale miles

Total and Net Length of Improvement 430.00 Feet = 0.081 Miles



*Keith W. Bentley*  
Illinois Professional No. 43789

APPROVED NOVEMBER 5 2007  
*[Signature]*  
COUNTY ENGINEER

PASSED 11-9-2007  
*[Signature]*  
DISTRICT SEVEN ENGINEER OF LOCAL ROADS & STREETS

Releasing For Bid Based on Limited Review 11-9-2007  
*[Signature]*  
DEPUTY DIRECTOR OF HIGHWAYS, REGIONAL ENGINEER

STATE OF ILLINOIS  
DEPARTMENT OF TRANSPORTATION

11/5/2007  
Date