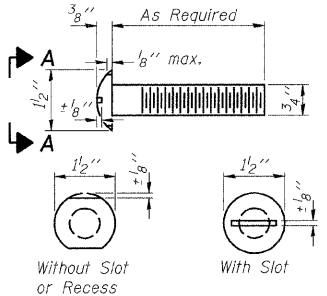
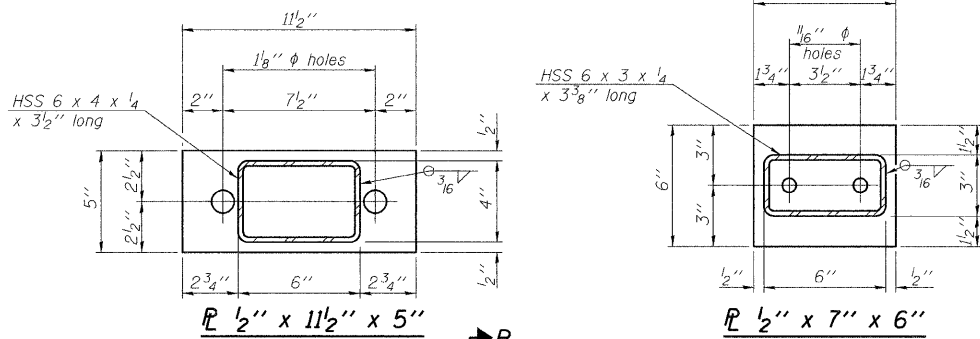


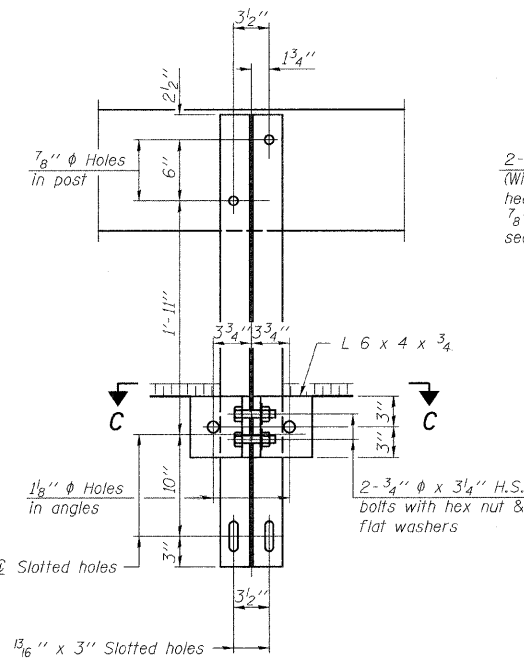
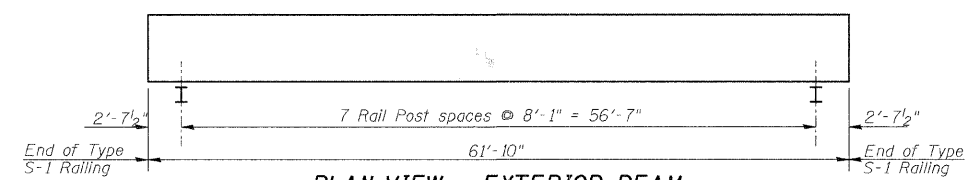
ROUTE NO.	SECTION	COUNTY	TOTAL SHEETS	SHEET NO.
T.R. 256	06-III16-00-BR	MACON	14	12
FED. ROAD DIST. NO.		ILLINOIS PROJECT: BROS-115(63)	CONTRACT NO. 95530	



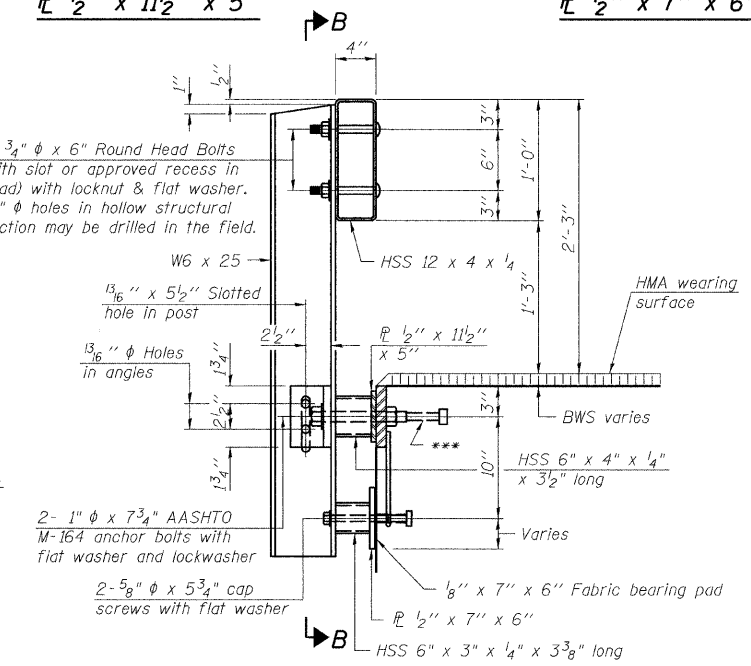
**VIEW A-A  
ROUND HEAD BOLT**



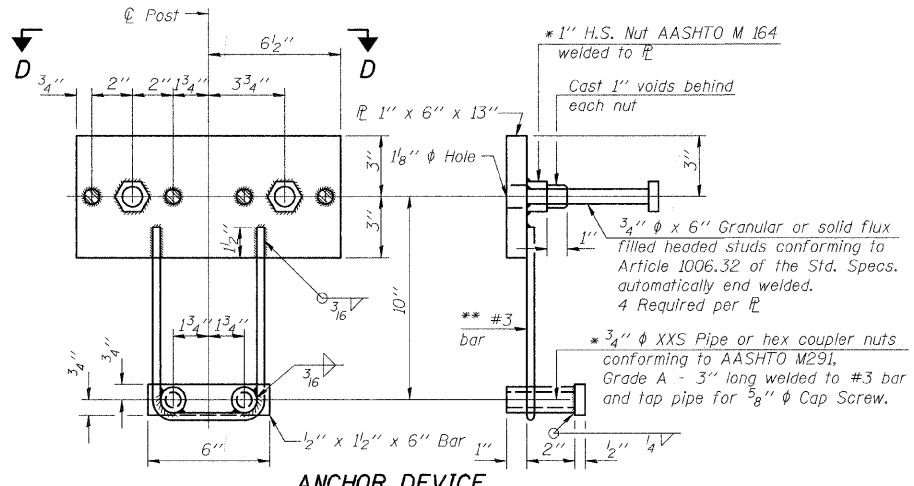
**PLAN VIEW - EXTERIOR BEAM**  
(Showing Rail Post Spacing)



**SECTION B-B**

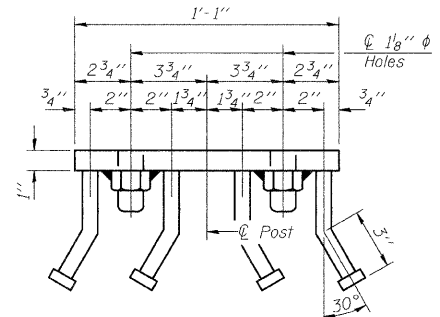


**SECTION AT RAILING POST**

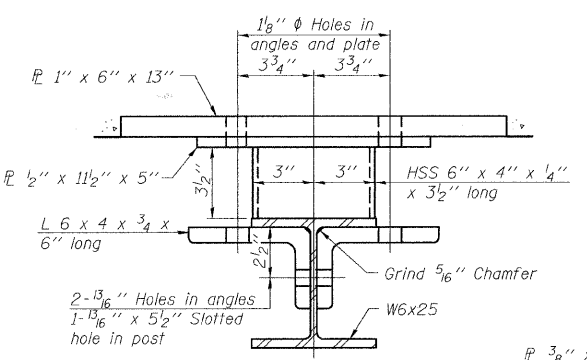


**ANCHOR DEVICE**  
\* Threaded areas shall be plugged or blocked off during casting of beam.

**Notes:**  
All field drilled holes shall be coated with an approved zinc rich paint before erection.  
For multi-span bridges, sufficient 1/4" x 6" x 1'-2" galvanized steel shims shall be provided to align rail between adjacent spans. Cost included with Steel Railing, Type S-1.  
All steel rail elements shall be galvanized according to Article 509.05 of the Standard Specifications.  
\*\*\* The studs of the anchor devices shall be placed below the top reinforcement bars and the outermost longitudinal reinforcement bar shall be placed directly above the studs of the rail post anchor device.

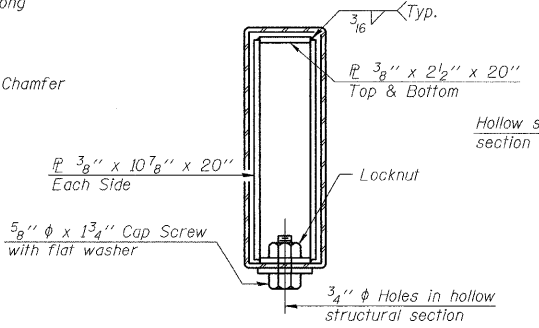


**VIEW D-D**

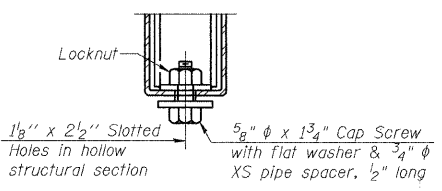


**SECTION C-C**

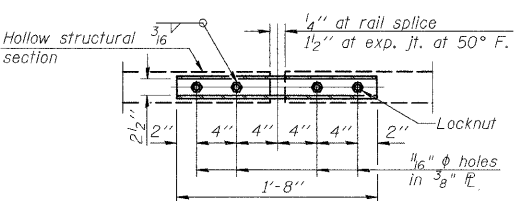
\*\*\* Whenever the lower insert assemblies interfere with strand locations, the #3 bars shall be cut and adjusted in order to allow raising or lowering of the lower inserts. Maximum adjustment not to exceed 1/2".



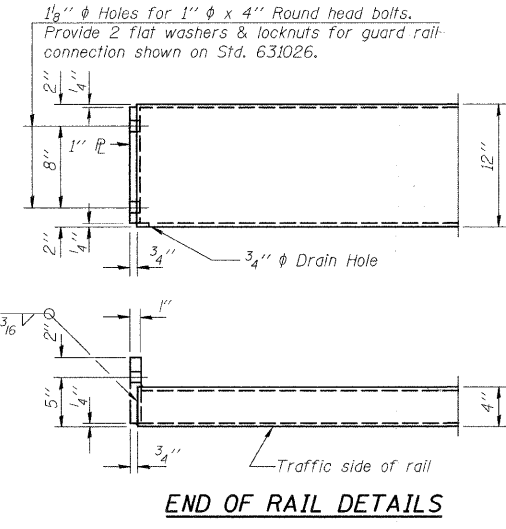
**SECTIONS AT RAIL SPLICE**



**RAIL SPLICE CONNECTION  
AT EXPANSION JT.**



**PLAN-BOTT. SPLICE TYPICAL**



**END OF RAIL DETAILS**

**BILL OF MATERIAL**

Item	Unit	Quantity
Steel Railing Type S-1	Foot	124

**STEEL RAILING**

Date	Designed MJP	T.R. 256 OVER BIG CREEK SECTION 06-III16-00-BR MACON COUNTY STA. 15+01.90 PROP. STR. NO. 058-3389	Sheet No.
Revisions	Drawn BKN		<b>3</b>
	Checked KWB		
	Approved KWB		
Prepared by:	<b>URS</b> 345 East Ash Avenue Decatur, Il. 62526		of 5 URS Job No. 36431783