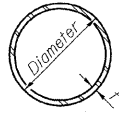


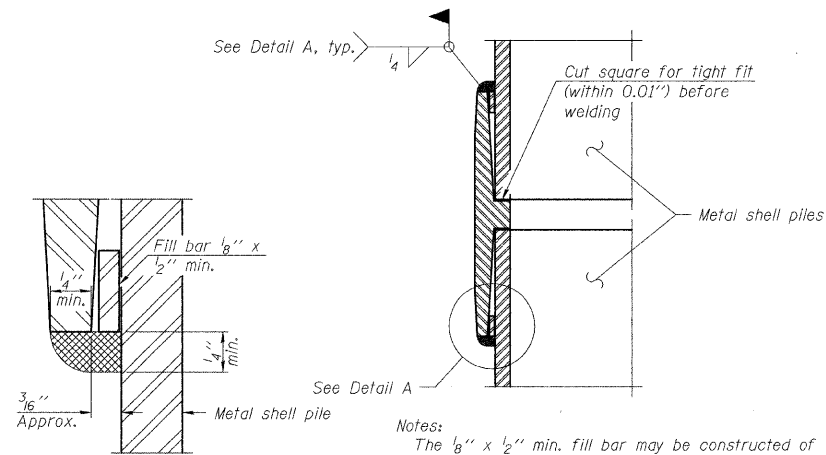
ROUTE NO.	SECTION	COUNTY	TOTAL SHEETS	SHEET NO.
T.R. 256	06-III16-00-BR	MACON	14	14
FED. ROAD DIST. NO.		ILLINOIS PROJECT: BROS-115(63)		

CONTRACT NO. 95530



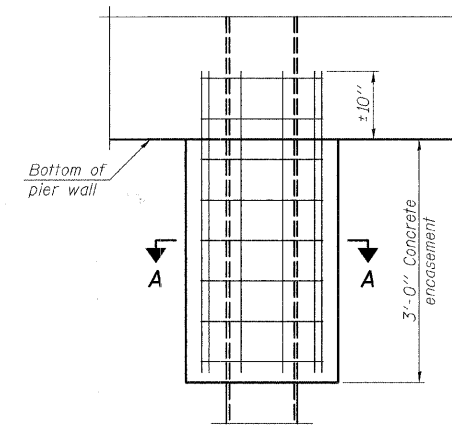
**METAL SHELL PILE TABLE**

Designation	Wall thickness t	Weight per foot (Lbs./ft.)	Inside volume (yd. <sup>3</sup> /ft.)	Encasement diameter A
PP12	0.250"	31.37	0.0267	30"
PP14	0.250"	36.71	0.0368	30"

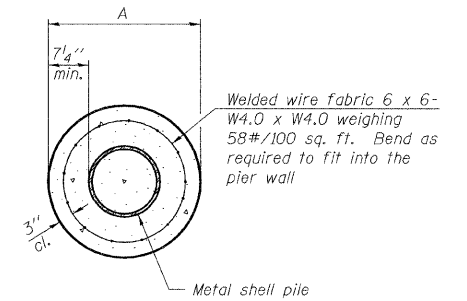


**Notes:**  
 The  $\frac{1}{8}$ " x  $\frac{1}{2}$ " min. fill bar may be constructed of 2 bars with a  $\frac{1}{8}$ " max. gap between them.  
 Pile segments shall be driven to solid contact with splicer before welding.

**WELDED COMMERCIAL SPLICE**



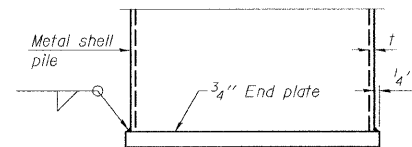
**ELEVATION**



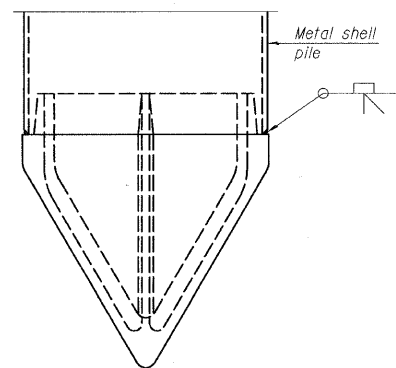
**SECTION A-A**

**Notes:**  
 See Metal Shell Pile Table for dimension "A".  
 Forms for encasement may be omitted when soil conditions permit.

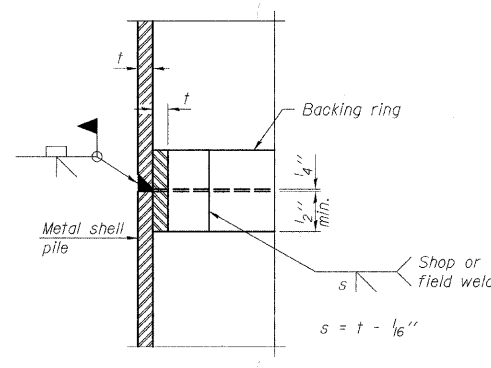
**CONCRETE ENCASEMENT AT PIERS**



**END PLATE ATTACHMENT**

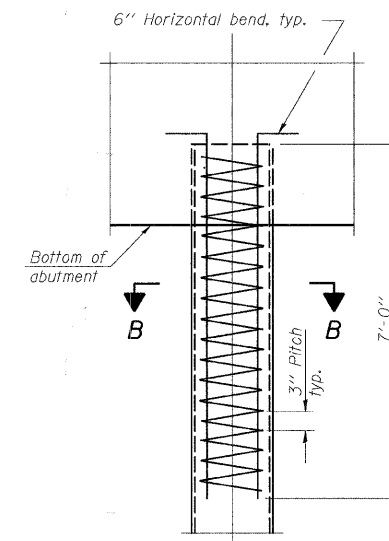


**METAL SHELL PILE SHOE ATTACHMENT**

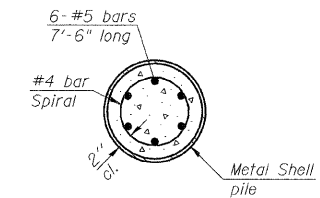


**COMPLETE PENETRATION WELD SPLICE**

Backing ring made from pile shell. Remove segment to allow reducing circumference and vertically rejoin with partial joint penetration weld.



**ELEVATION**



**SECTION B-B**

**METAL SHELL REINFORCEMENT AT ABUTMENTS**

**Note:**  
 The metal shell piles shall be according to ASTM A 252 Grade 3.

**PILE DETAILS**

Date	Designed MJP	T.R. 256 OVER BIG CREEK SECTION 06-III16-00-BR MACON COUNTY STA. 15+01.90 PROP. STR. NO. 058-3389	Sheet No.
Revisions	Drawn BKN		5
	Checked KWB		
	Approved KWB		
Prepared by:	<b>URS</b> 345 East Ash Avenue Decatur, IL 62526		of 5 URS Job No. 36431783