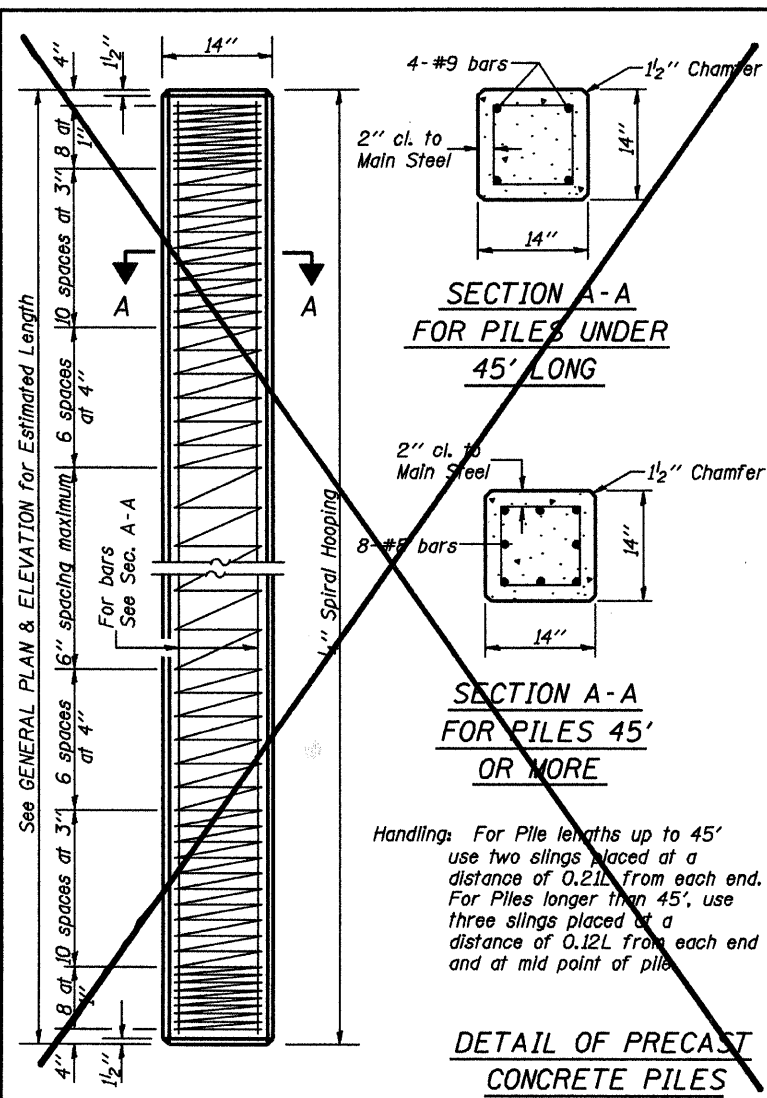


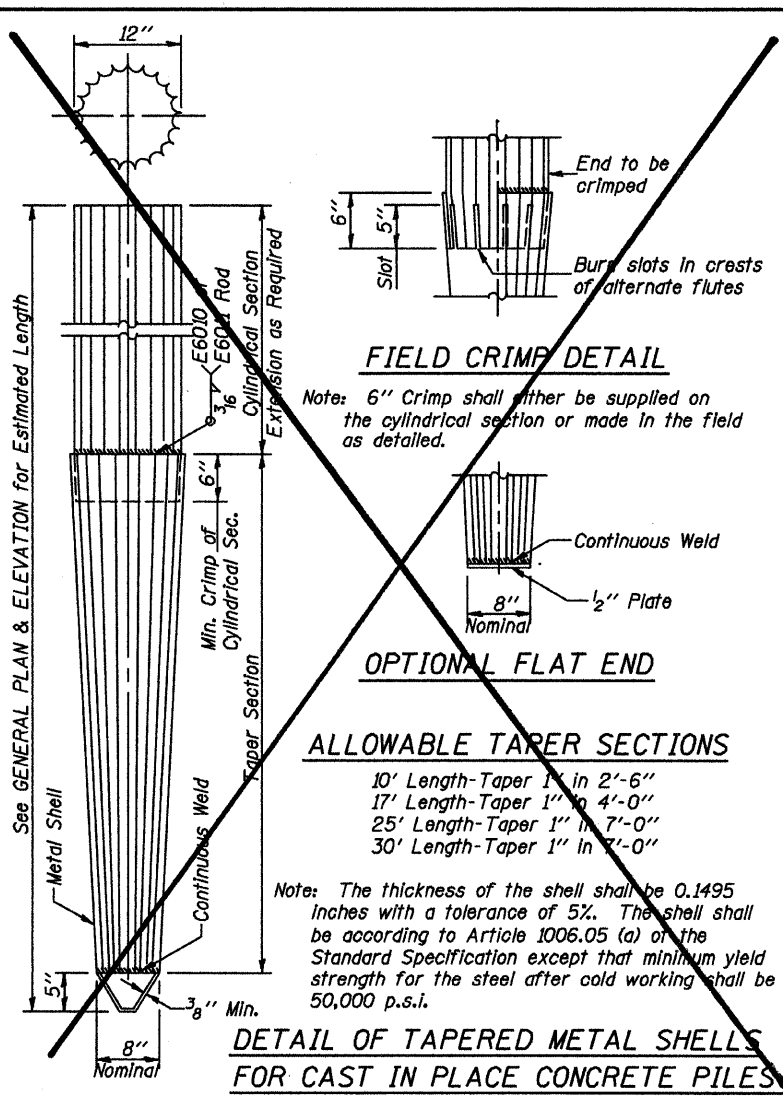
| | | | | |
|----------------------|------------------|---------|----------------|-----------|
| ROUTE NO. | SECTION | COUNTY | TOTAL SHEETS | SHEET NO. |
| T.R. 78 | 03-02125-00-BR | FAYETTE | 12 | 10 |
| FED. AID PROJECT NO. | ILLINOIS PROJECT | | CONTRACT 95540 | |

Reinforcement cage shall be omitted when Concrete Encasement is provided.

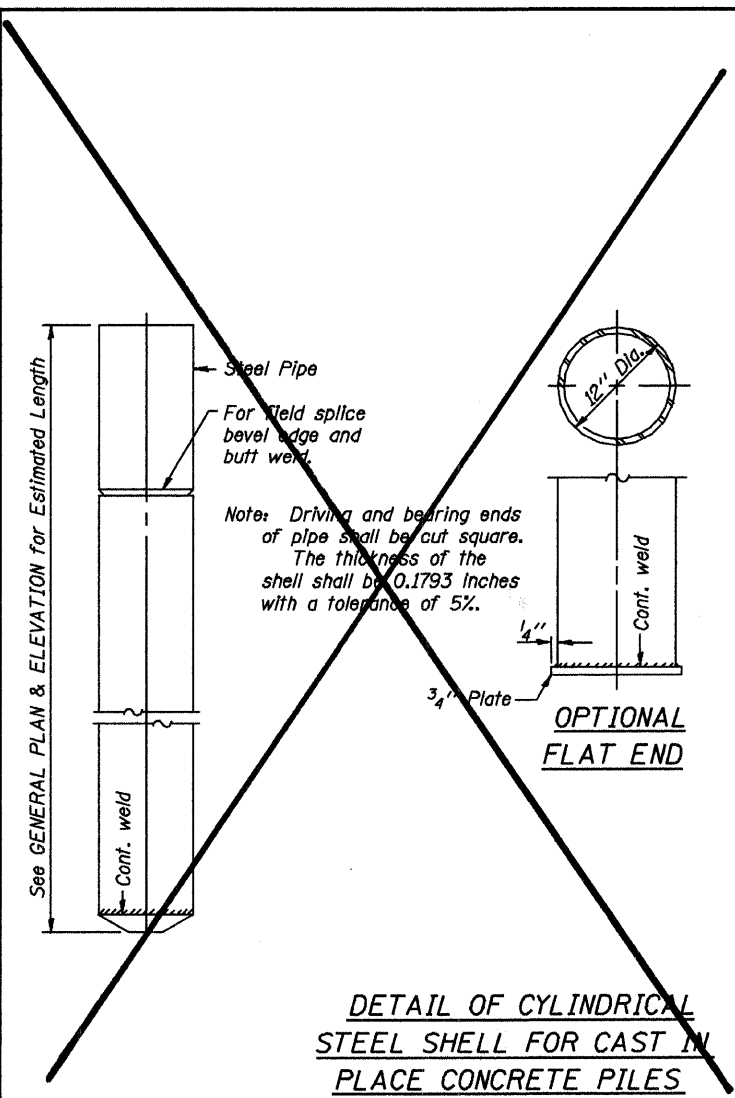
The cost of Reinforcement is included with the Cost of Furnishing Piles.



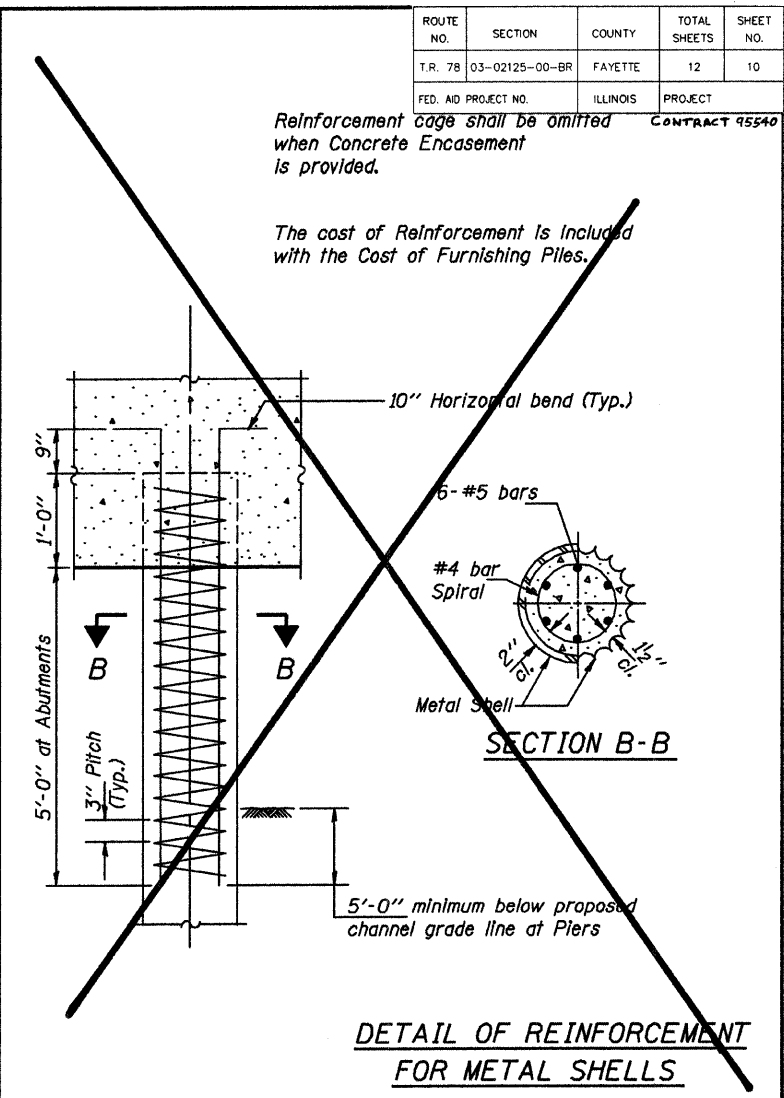
DETAIL OF PRECAST CONCRETE PILES



DETAIL OF TAPERED METAL SHELLS FOR CAST IN PLACE CONCRETE PILES



DETAIL OF CYLINDRICAL STEEL SHELL FOR CAST IN PLACE CONCRETE PILES



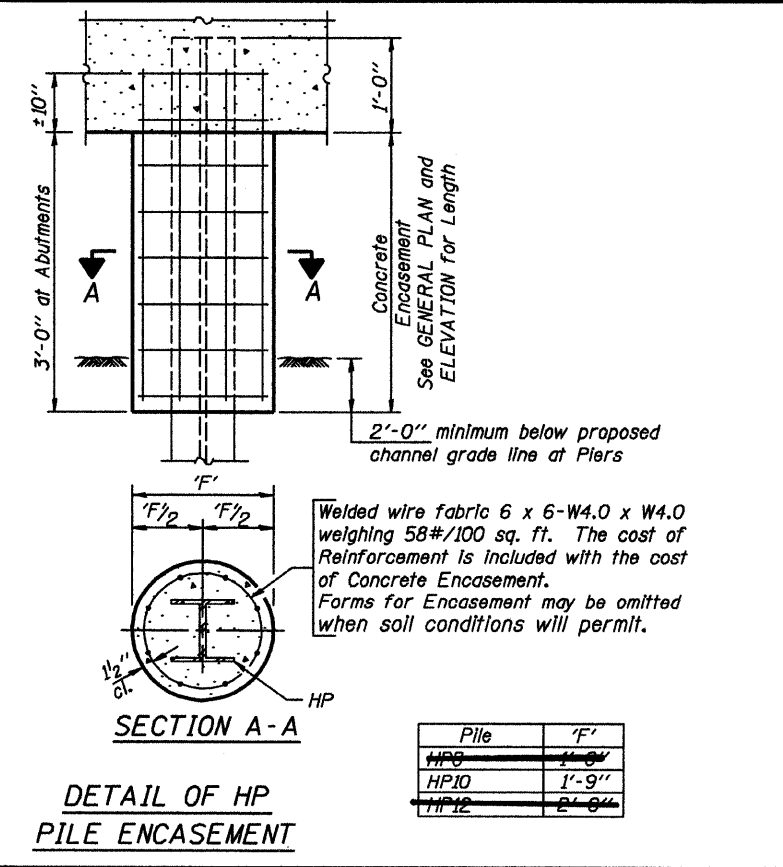
DETAIL OF REINFORCEMENT FOR METAL SHELLS

Illinois Department of Transportation

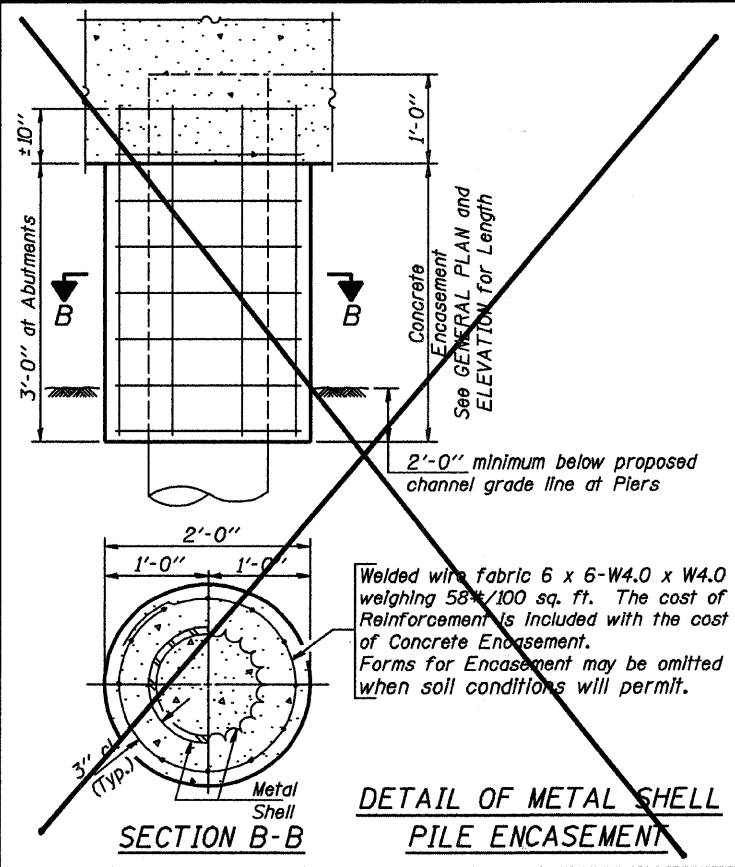
PASSED FEBRUARY 1, 2000
Thomas J. Demagala
 Engineer of Bridge Design

APPROVED FEBRUARY 1, 2000
Ralph E. Anderson
 Engineer of Bridges and Structures

1887-H (01/95)



DETAIL OF HP PILE ENCASEMENT



DETAIL OF METAL SHELL PILE ENCASEMENT

QUANTITIES/FT. OF ENCASEMENT (STEEL PILES)

| Pile Size | Item | Quantity |
|-----------|---------------------|------------|
| HP8 | Concrete Encasement | 0.067 C.Y. |
| HP10 | Concrete Encasement | 0.086 C.Y. |
| HP12 | Concrete Encasement | 0.140 C.Y. |

(METAL SHELL PILES)

| Pile Size | Item | Quantity |
|-----------|---------------------|------------|
| 12" Dia | Concrete Encasement | 0.087 C.Y. |

PILE DETAILS

STANDARD CX-1