

| | | | | |
|-----------|----------------------------------|---------|--------------|-----------|
| F.A. RTE. | SECTION | COUNTY | TOTAL SHEETS | SHEET NO. |
| | 03-00026-00-PK 06-00026-01-MS | MADISON | 51 | 6 |

T.B.M. #1 - IRON PIN 365.1' NORTH OF CENTER OF CUL-DE-SAC AND 21.2' WEST OF CENTER LINE. ELEV. 437.18



Call 48 hours before you dig!! (Excluding Sat., Sun. & Holidays)

Joint Utility Locating Information for Excavators
211 North Broadway
Suite 1900
St. Louis, Missouri 63102
Tel: 314-541-0125
Fax: 314-541-0125



LEWIS AND CLARK MEMORIAL TOWER
HARTFORD, ILLINOIS 62048

SHEET TITLE:
CONSTRUCTION PLAN

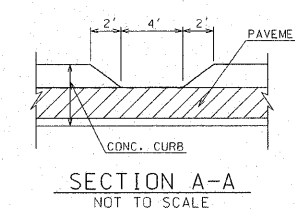
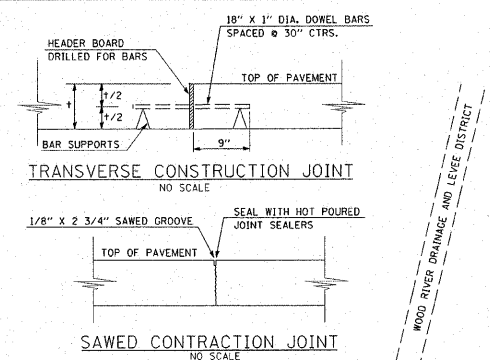
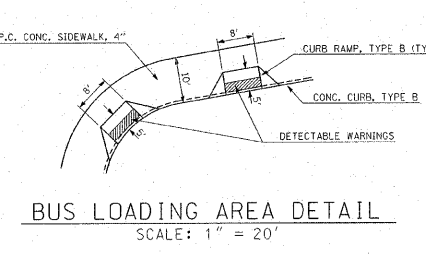
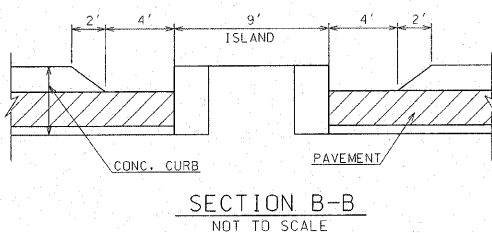
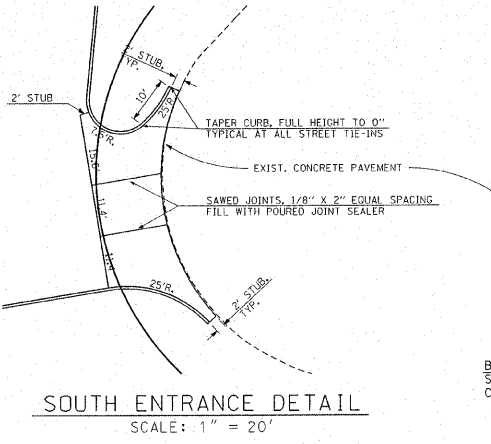
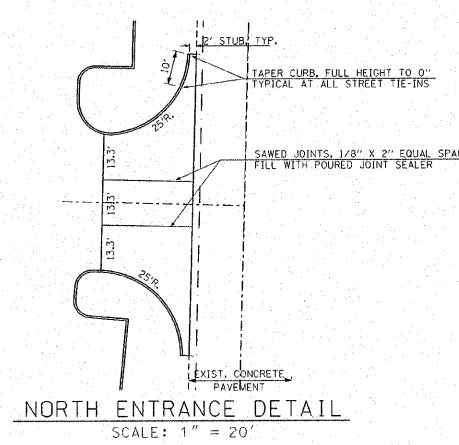
| DATE | REVISIONS |
|------|-----------|
| | |
| | |

KENNEDY PROJECT NO. 10-02048

ISSUE DATE

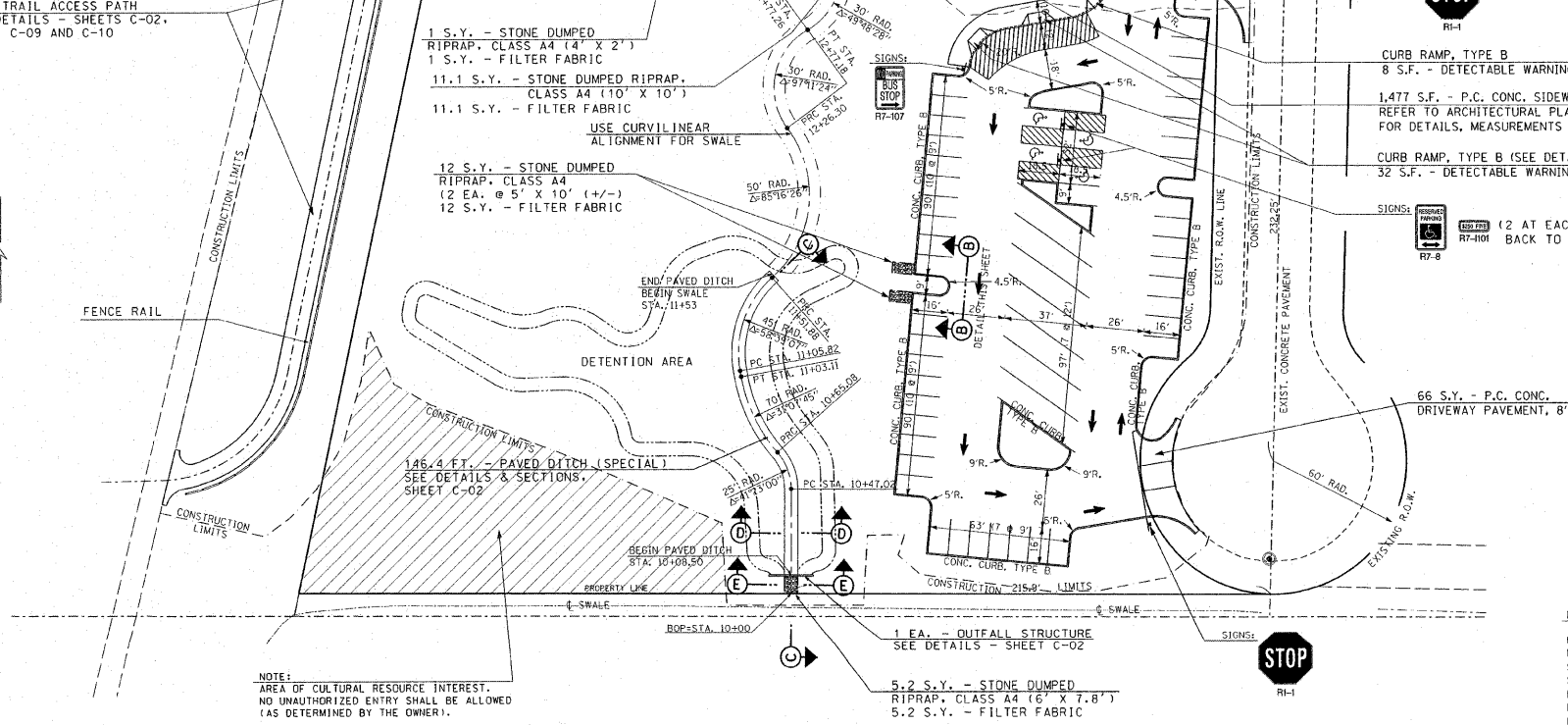
SHEET NO.

C-05



- 2 CULVERTS = EACH AS FOLLOWS:
81.7 FT. - PIPE CULVERTS, CLASS A,
T1, 24" @ 0.18%
F.L. - 430.43(N); F.L. - 430.29(S)
4 EA. - PRECAST REINFORCED CONCRETE
FLARED END SECTIONS, 2A"
- 1 L.S. - BUILDING
(FOR BUILDING - SEE
ARCHITECTURAL PLANS)
- EXIST. STRUCTURES
- 1 EA. - FLUSH INLET BOX FOR
MEDIAN, STANDARD 542546
TOP - 434.83; F.L. - 431.01
- 5,173 S.F. - P.C. CONC. SIDEWALK, 4"
(SEE PLAZA PAVING NOTE THIS SHEET)
REFER TO ARCHITECTURAL PLANS AND
SPECIFICATIONS FOR MEASUREMENTS
AND SLOPES OF PLAZA AREA
- 86.2 FT. - STORM SEWER, CLASS A,
TYPE 1, 15" @ 0.50%
1 EA. - PRECAST REINFORCED CONCRETE
FLARED END SECTIONS, 15"
(F.L. - 430.50)
- 24.3 C.Y. - TRENCH BACKFILL

BIKE TRAIL ACCESS PATH
SEE DETAILS - SHEETS C-02,
C-08, C-09 AND C-10



NOTE:
AREA OF CULTURAL RESOURCE INTEREST.
NO UNAUTHORIZED ENTRY SHALL BE ALLOWED
(AS DETERMINED BY THE OWNER).

GENERAL QUANTITIES:
(THIS SHEET ONLY - UNLESS OTHERWISE SPECIFICALLY CALLED OUT)

- PAVEMENT - SEE SHEET "C-02" FOR DETAIL
- 456 TONS - HOT-MIX ASPHALT SURFACE COURSE, MIX "C", N70
 - 456 TONS - HOT-MIX ASPHALT BINDER COURSE, IL-19.0, N70
 - 1,080 GAL. - BITUMINOUS MATERIALS (PRIME COAT)
 - 2,532 TONS - SUBBASE GRANULAR MATERIAL, TYPE A
 - 6,123 S.Y. - PROCESSING MODIFIED SOIL, 12"
 - 104 TONS - LIME
- 1,959 FT. - CONCRETE CURB, TYPE B
- 3,334 FT. - THERMOPLASTIC PAVEMENT MARKING - LINE 4"
- 98 S.F. - THERMOPLASTIC PAVEMENT MARKING - LETTERS & SYMBOLS

- 159 S.Y. - P.C. CONC. DRIVEWAY PAVEMENT, 8"
(SEE ENTRANCE DETAIL, THIS SHEET)
- 2,795 S.F. - P.C. CONC. SIDEWALK, 4"
- STOP
R1-1
- CURB RAMP, TYPE B
8 S.F. - DETECTABLE WARNINGS
- 1,477 S.F. - P.C. CONC. SIDEWALK, 4"
REFER TO ARCHITECTURAL PLANS AND SPECIFICATIONS
FOR DETAILS, MEASUREMENTS AND SLOPES IN THIS AREA
- CURB RAMP, TYPE B (SEE DETAIL, THIS SHEET)
32 S.F. - DETECTABLE WARNINGS (2 @ 16 S.F.)

SIGNING SCHEDULE (THIS SHEET ONLY)

| SIGN | TYPE | SIZE | LETTERS/BACKGROUND | QUAN. | S.F. | POST |
|---------|-------------|-----------|--------------------|-------|-------|------|
| R1-1 | STOP | 30" x 30" | WHITE ON RED | 2 | 12.50 | 24' |
| R7-B | RSRVD PRKNG | 12" x 18" | BLACK ON WHITE | 7 | 10.50 | 60' |
| R7-1101 | FINE | 12" x 6" | GREEN ON WHITE | 7 | 3.50 | - |
| R7-107 | NO PARKING | 12" x 18" | RED ON WHITE | 1 | 1.50 | 12' |
| TOTAL | | | | QUAN. | 18.00 | 96' |

PLAZA PAVING NOTE:
ELEVATIONS SHOWN IN THE PLAZA AREA ARE FINISHED ELEVATIONS. DUE TO THE RELATIVELY FLAT EXPANSE OF THE PLAZA, ALL REQUIRED ELEVATIONS CANNOT BE SHOWN OR DETAILED. CONTRACTOR SHALL INSURE THAT THE COMPLETED SURFACE SLOPES TO FLUSH INLET BOX. CONTRACTOR SHALL COORDINATE WITH ALL DISCIPLINES TO ELIMINATE UNDERGROUND CONFLICTS AND TO INSURE THAT THE FINAL FINISH OF THE SUBGRADE WILL BE CORRECT TO ACCEPT THE VARIOUS SURFACE MATERIALS AND CONTOURS OF THE FINISHED PLAZA AREA. PAVEMENT JOINTING SHALL BE AS SHOWN ON THE ARCHITECTURAL DRAWINGS AND AS DIRECTED BY THE RESIDENT ENGINEER. AT ANY CONSTRUCTION JOINT, PLACE #4 EPOXY COATED REINFORCEMENT BARS 2'-6" LONG AT 2'-6" CENTERS AT 2" DEPTH. ADDITIONAL WORK CREATED BY THIS COORDINATION SHALL BE INCLUDED IN THE CONTRACT UNIT PRICE FOR P.C. CONCRETE SIDEWALK, 4".

UNDERGROUND FACILITIES, STRUCTURES, AND UTILITIES HAVE BEEN PLOTTED FROM AVAILABLE SURVEYS AND RECORDS AND, THEREFORE, THEIR LOCATIONS MUST BE CONSIDERED APPROXIMATE ONLY. THERE MAY BE OTHERS THE EXISTENCE OF WHICH IS AT PRESENT NOT KNOWN. VERIFICATION OF THE LOCATIONS OF UNDERGROUND UTILITIES, SHOWN OR NOT SHOWN, WILL BE THE RESPONSIBILITY OF THE CONSTRUCTION CONTRACTOR.