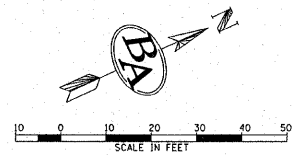


UNDERGROUND FACILITIES, STRUCTURES, AND UTILITIES HAVE BEEN PLOTTED FROM AVAILABLE SURVEYS AND RECORDS AND, THEREFORE, THEIR LOCATIONS MUST BE CONSIDERED APPROXIMATE ONLY. THERE MAY BE OTHERS THE EXISTENCE OF WHICH IS AT PRESENT NOT KNOWN. VERIFICATION OF THE LOCATIONS OF UNDERGROUND UTILITIES, SHOWN OR NOT SHOWN, WILL BE THE RESPONSIBILITY OF THE CONSTRUCTION CONTRACTOR.



Joint Utility Locating Information for Excavators

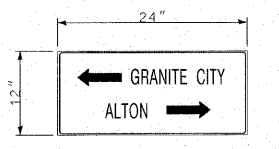
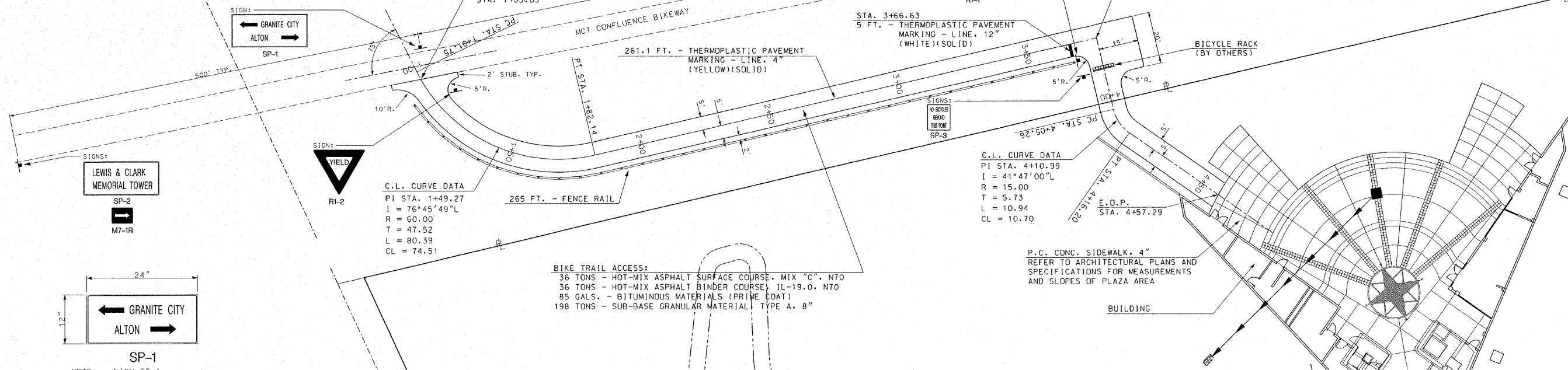
Call 48 hours before you dig!! (Excluding Sat., Sun. & Holidays)



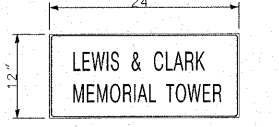
T.B.M. #1 - IRON PIN 365.1' NORTH OF CENTER OF CUL-DE-SAC AND 21.2' WEST OF CENTER LINE. ELEV. 437.18

F.A. RTE.	SECTION	COUNTY	TOTAL SHEETS	SHEET NO.
	03-00026-00-PK 06-00026-01-MS	MADISON	51	9

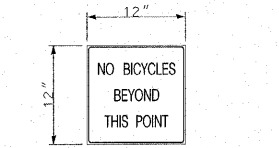
SIGN	TYPE	SIZE	LETTERS/BACKGROUND	QUAN.	S.F.	POST
M7-1L	DIRECTION	12" x 9"	WHITE ON GREEN	1	0.75	12'
M7-1R	DIRECTION	12" x 9"	WHITE ON GREEN	1	0.75	12'
R1-1	STOP	18" x 18"	WHITE ON RED	1	2.25	12'
R1-2	YIELD	18" x 18"	RED ON WHITE	1	2.25	12'
SP-1	INFORMATION	24" x 12"	WHITE ON GREEN	1	2.00	12'
SP-2	INFORMATION	24" x 12"	WHITE ON BROWN	2	4.00	24'
SP-3	INFORMATION	12" x 12"	BLACK ON WHITE	1	1.00	12'
SP-4	INFORMATION	24" x 12"	BLACK ON WHITE	1	2.00	12'
TOTAL				QUAN. 15.00		108'



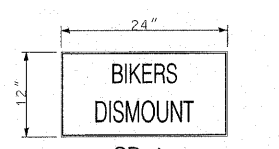
NOTE: SIGN SP-1 ALL LETTERS AND SYMBOLS TO BE 4" HIGH WHITE LETTERS ON GREEN BACKGROUND



NOTE: SIGN SP-2 ALL LETTERS AND SYMBOLS TO BE 4" HIGH WHITE LETTERS ON BROWN BACKGROUND



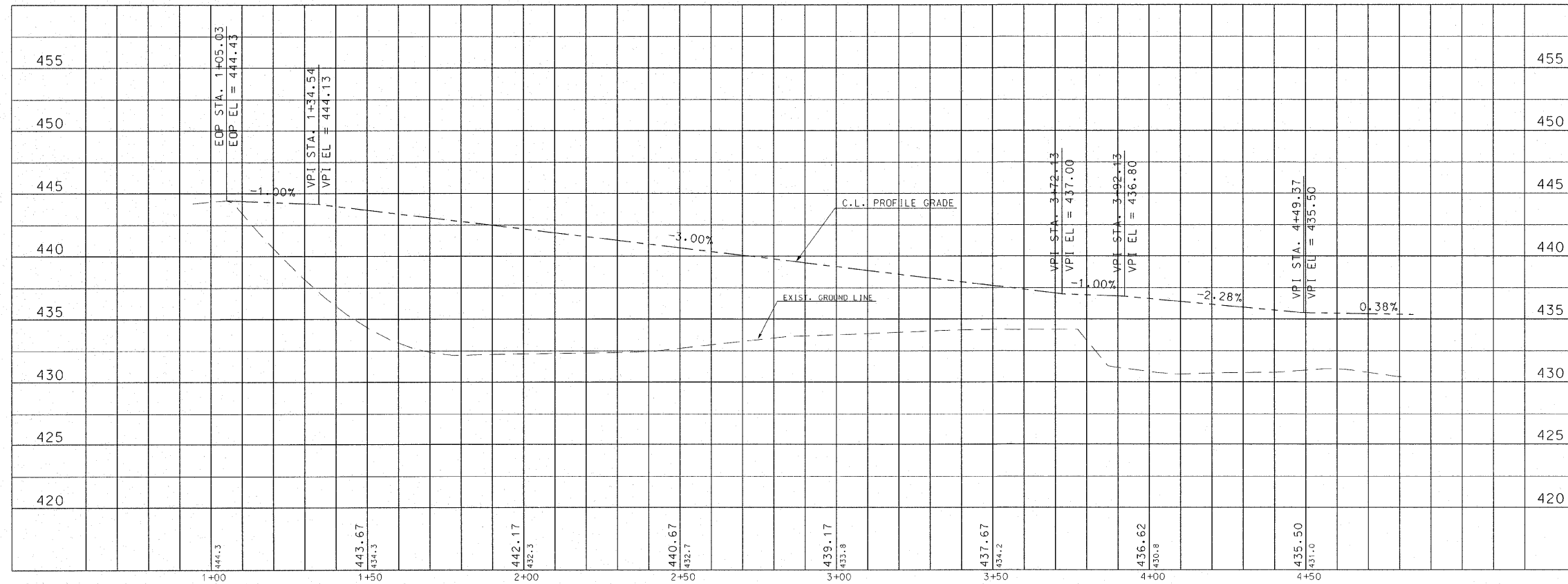
NOTE: SIGN SP-3 ALL LETTERS AND SYMBOLS TO BE 3" HIGH BLACK LETTERS ON WHITE BACKGROUND



NOTE: SIGN SP-4 ALL LETTERS AND SYMBOLS TO BE 4" HIGH BLACK LETTERS ON WHITE BACKGROUND

TRAFFIC CONTROL SIGNS, DETAILS NOT TO SCALE

BIKE TRAIL ACCESS:
 36 TONS - HOT-MIX ASPHALT SURFACE COURSE, MIX "C", N70
 36 TONS - HOT-MIX ASPHALT BINDER COURSE, IL-19.0, N70
 85 GALS. - BITUMINOUS MATERIALS (PRIME COAT)
 198 TONS - SUB-BASE GRANULAR MATERIAL, TYPE A, 8"



211 North Broadway
 Suite 1900
 St. Louis, Missouri 63102
 Phone: (314) 541-0125
 Fax: (314) 541-0125



LEWIS AND CLARK
 MEMORIAL TOWER
 HARTFORD, ILLINOIS 62048

SHEET TITLE:
 BIKE TRAIL ACCESS
 PLAN AND PROFILE

REV. NO.	DATE	REMARKS

KENNEDY PROJECT NO
 10-02048
 ISSUE DATE
 SHEET NO.
C-08