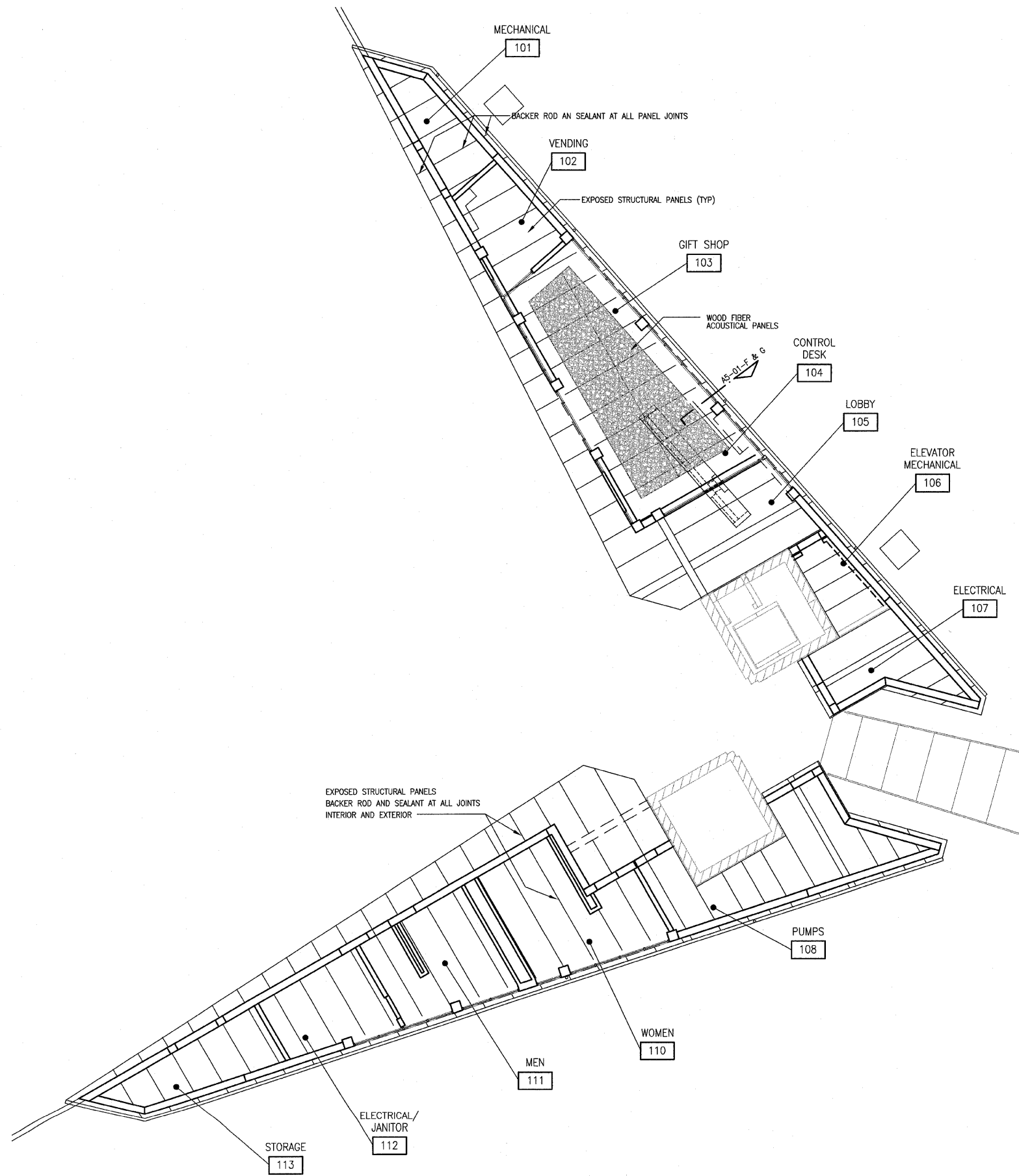
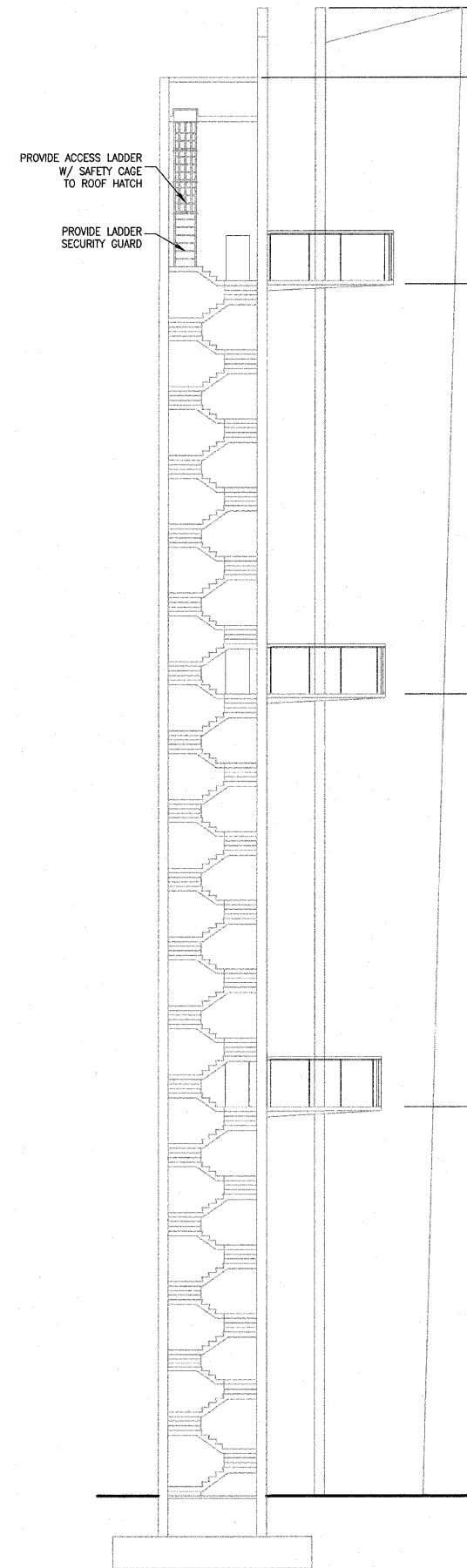


F.A. RTE.	SECTION	COUNTY	TOTAL SHEETS	SHEET NO.
	03-00026-00-PK	MADISON	51	25
	06-00026-01-MS	97331		

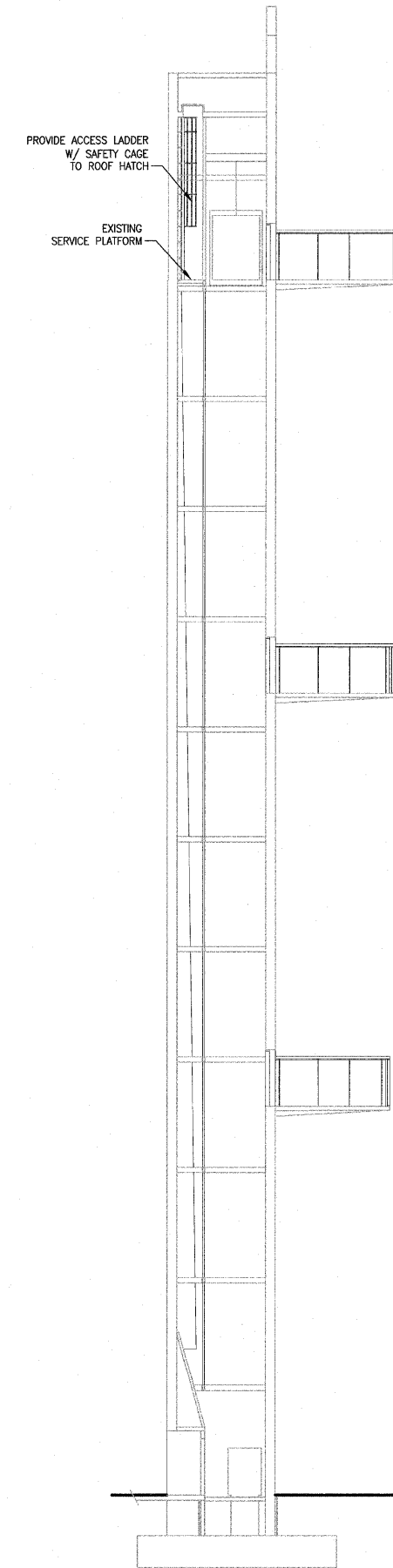
FEDERAL AID PROJECT



A REFLECTED CEILING PLAN
 1/8" = 1'-0"



C SECTION THRU SOUTH TOWER
 1" = 10'-0"



D SECTION THRU NORTH TOWER
 1" = 10'-0"

211 N. Broadway
 Suite 1900
 St. Louis, MO 63102
 (314) 241-8188
 FAX (314) 241-0125

KAI

LEWIS AND CLARK MEMORIAL TOWER
VILLAGE OF HARTFORD, ILLINOIS
 HARTFORD, ILLINOIS 62049

SHEET TITLE:
REFLECTED CEILING PLAN

REV. NO.	DATE	REMARKS
1	11/8/06	DOT REV.

KENNEDY PROJECT NO
KAI# 10-02048

ISSUE DATE
12-JULY-05

SHEET NO

A3-03