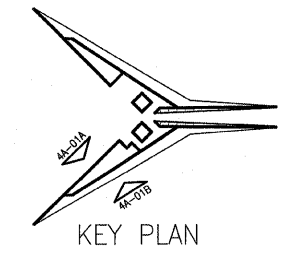
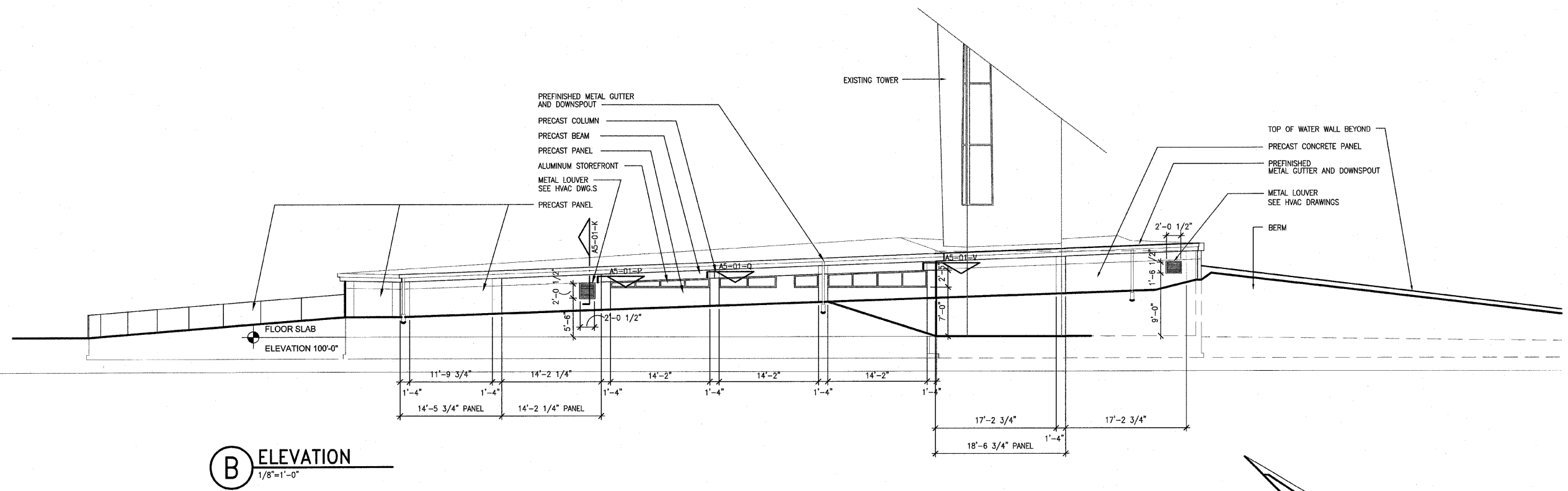
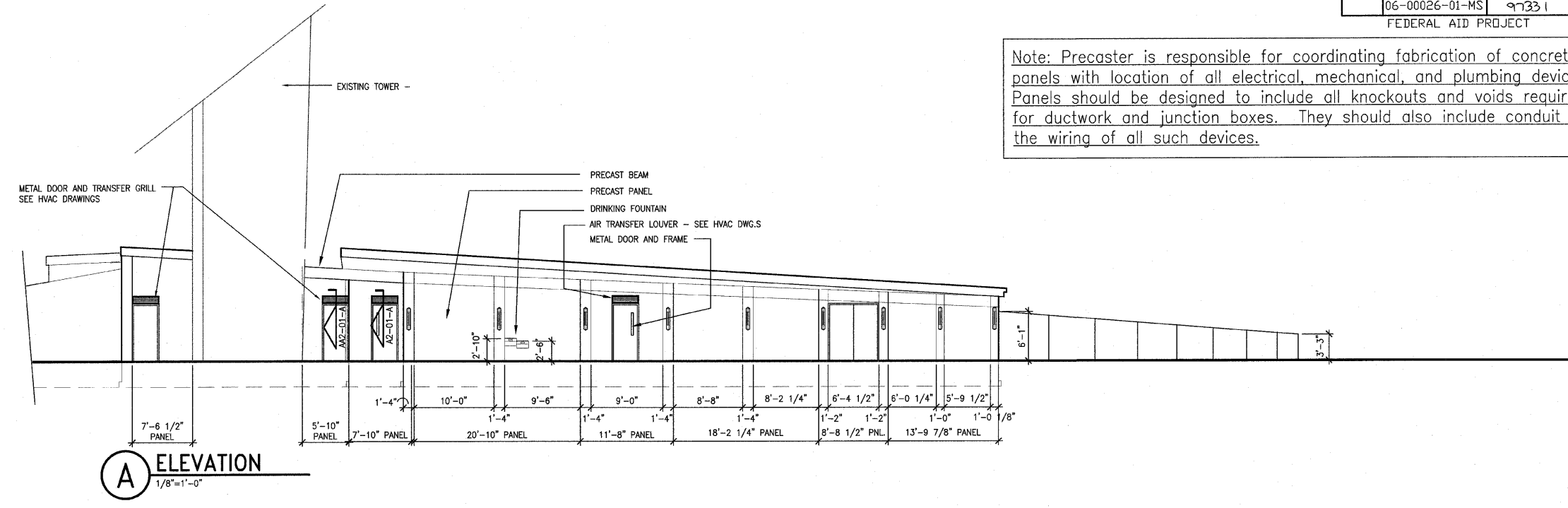


F.A. R.T.E.	SECTION	COUNTY	TOTAL SHEETS	SHEET NO.
	03-00026-00-PK 06-00026-01-MS	MADISON 97331	51	26

FEDERAL AID PROJECT

Note: Precaster is responsible for coordinating fabrication of concrete panels with location of all electrical, mechanical, and plumbing devices. Panels should be designed to include all knockouts and voids required for ductwork and junction boxes. They should also include conduit for the wiring of all such devices.



F:\2002\10-02048\6000SC\PHASE-2\25\A4-01.DWG | 12/27/2005 8:40:36 AM | Xref to: BS-ELEV TB243620L | Images: none

KAI	
211 N. Broadway Suite 1900 St. Louis, MO 63102 (314) 241-8188 FAX (314) 241-0125	
LEWIS AND CLARK MEMORIAL TOWER	
VILLAGE OF HARTFORD, ILLINOIS	
HARTFORD, ILLINOIS 62049	
EXTERIOR ELEVATIONS	
REV. NO.	DATE
REMARKS	
KENNEDY PROJECT NO KAI# 10-02048	
ISSUE DATE 12-JULY-05	
SHEET NO A4-01	

© 2005 KENNEDY ASSOCIATES INCORPORATED