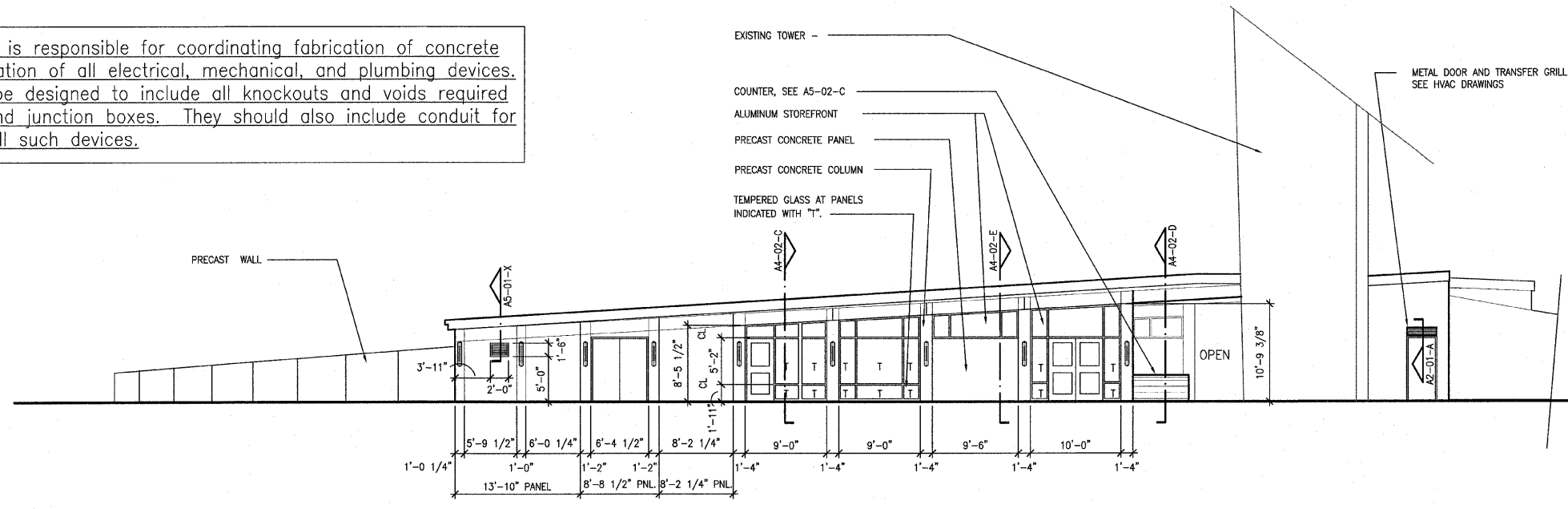


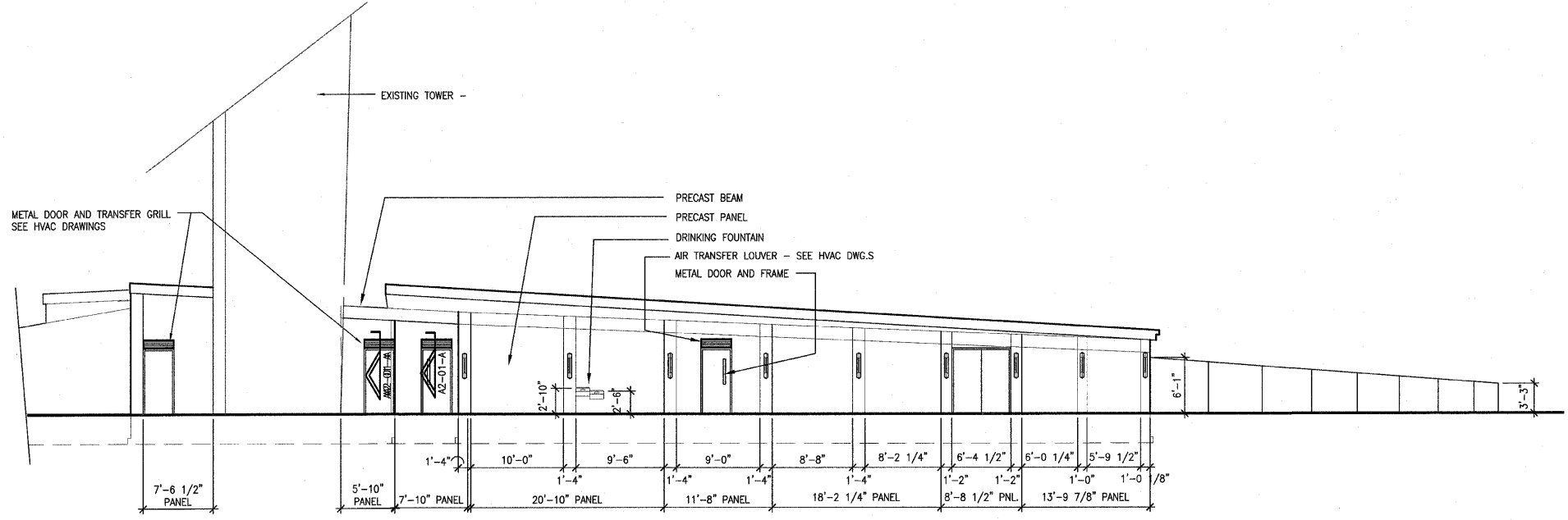
F.A. RTE.	SECTION	COUNTY	TOTAL SHEETS	SHEET NO.
	03-00026-00-PK 06-00026-01-MS	MADISON 97331	51	27

FEDERAL AID PROJECT

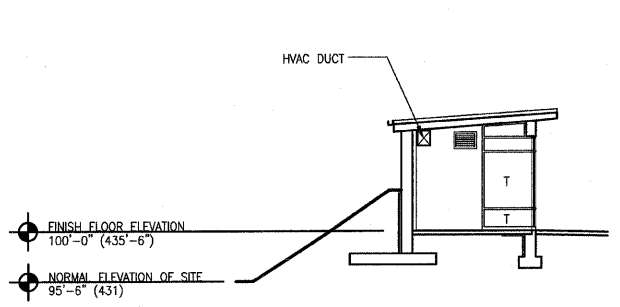
Note: Precaster is responsible for coordinating fabrication of concrete panels with location of all electrical, mechanical, and plumbing devices. Panels should be designed to include all knockouts and voids required for ductwork and junction boxes. They should also include conduit for the wiring of all such devices.



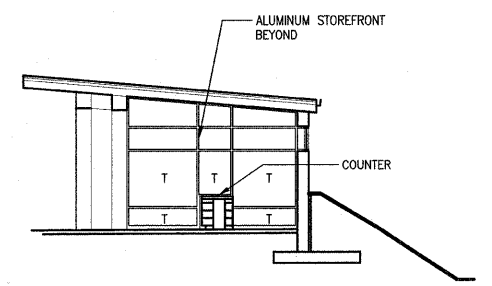
**A** NORTH BUILDING PLAZA ELEVATION  
1/8"=1'-0"



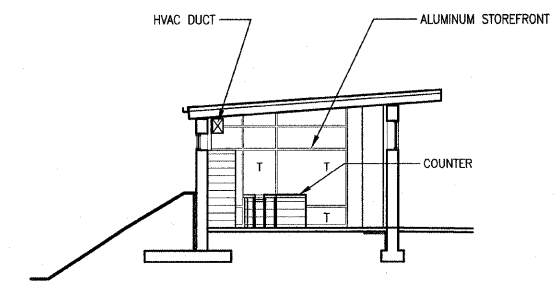
**B** SOUTH BUILDING PLAZA ELEVATION  
1/8"=1'-0"



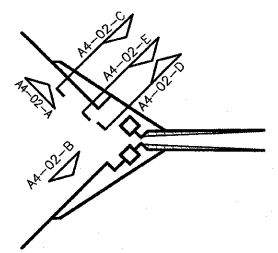
**C** SECTION AT NORTH BUILDING  
1/8"=1'-0"



**D** SECTION AT NORTH BUILDING  
1/8"=1'-0"



**E** SECTION AT NORTH BUILDING  
1/8"=1'-0"



KEY PLAN, N.T.S.

P:\2002\10-02048\600083\PHASE-2\2B\PHASE2A\A4-02.DWG | 5/1/2006 3:47:04 PM | Xref's: BS-ELEV TB24360DL BS-PLAN-2A | Images: none

211 N. Broadway  
Suite 1900  
St. Louis, MO  
63102  
(314) 241-8188  
FAX (314) 241-0125

**KAI**

**LEWIS AND CLARK MEMORIAL TOWER**  
**VILLAGE OF HARTFORD, ILLINOIS**  
HARTFORD, ILLINOIS 62049

SHEET TITLE  
**EXTERIOR BUILDING ELEVATIONS**

REV. NO.	REMARKS	DATE

KENNEDY PROJECT NO  
KAI# 10-02048

ISSUE DATE  
12-JULY-05

SHEET NO

**A4-02**

© 2005 KENNEDY ASSOCIATES INCORPORATED