

F.A. RTE.	SECTION	COUNTY	TOTAL SHEETS	SHEET NO.
	03-00026-00-PK	MADISON	51	28
	06-00026-01-MS	97331		

FEDERAL AID PROJECT

211 N. Broadway
Suite 1900
St. Louis, MO
63102
(314) 241-8188
FAX (314) 241-0125

KAI

LEWIS AND CLARK MEMORIAL TOWER
VILLAGE OF HARTFORD, ILLINOIS
HARTFORD, ILLINOIS 62049

SHEET TITLE:
EXTERIOR BUILDING ELEVATIONS

REV. NO.	DATE	REMARKS
1	11/8/06	DOT REV.

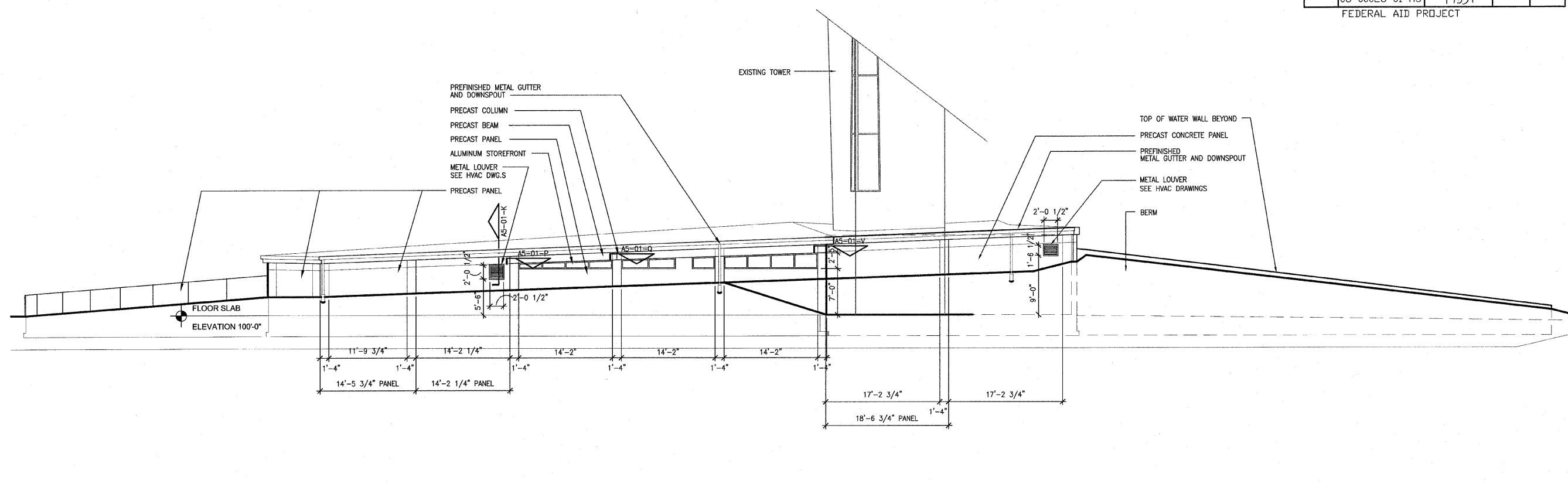
KENNEDY PROJECT NO
KAI# 10-02048

ISSUE DATE
12-JULY-05

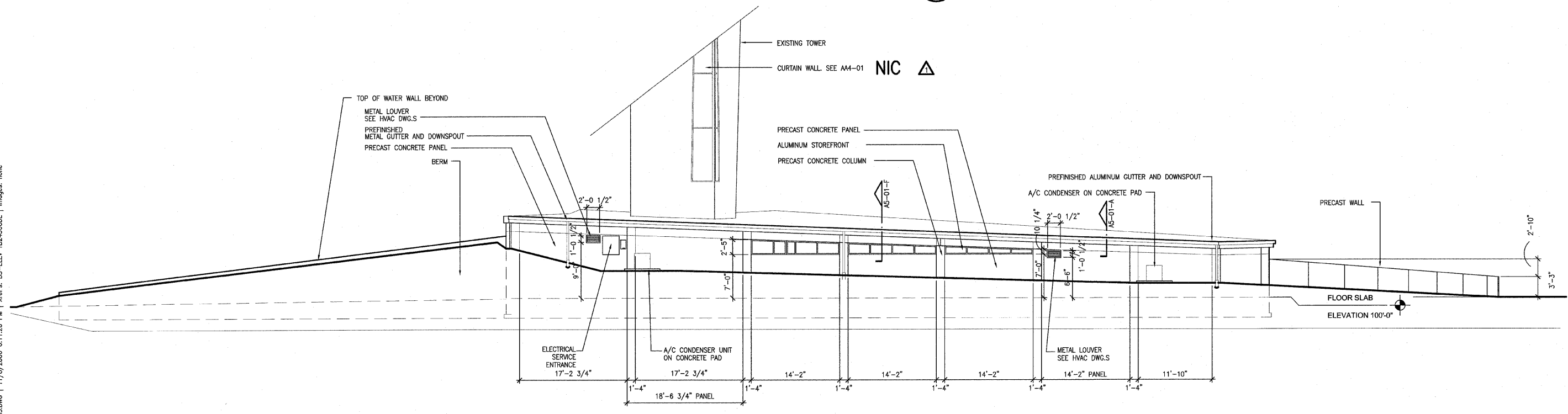
SHEET NO

A4-03

© 2005 KENNEDY ASSOCIATES INCORPORATED

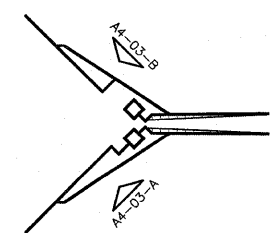


(A) SOUTH ELEVATION OF SOUTH BUILDING
1/8"=1'-0"



(B) NORTH ELEVATION OF NORTH BUILDING
1/8"=1'-0"

Note: Precaster is responsible for coordinating fabrication of concrete panels with location of all electrical, mechanical, and plumbing devices. Panels should be designed to include all knockouts and voids required for ductwork and junction boxes. They should also include conduit for the wiring of all such devices.



KEY PLAN, N.T.S.

P:\2002\10-02048\600DSC\PHASE-2\A3\PHASE2\A4-03.DWG | 11/8/2006 6:11:20 PM | Xref's: BS-ELEV TB2436CDL | Images: none