

F.A. RTE.	SECTION	COUNTY	TOTAL SHEETS	SHEET NO.
	03-00026-00-PK 06-00026-01-MS	MADISON	51	34

**REVISIONS AND NOTES:**

- 1 PROVIDE INSTANTANEOUS WATER FOR SK-1.
- 2 1 1/2" WATER TO MAIN SERVICE IN JANITOR'S ROOM OFF OF 2 1/2".
- 3 1HW HY-1 AND 1 CW HY-1, PROVIDE SHUT OFF VALVES ACCESSIBLE BY ACCESS PANEL TO SHUT OFF HY-1'S.
- 4 PROVIDE SHUT OFF VALVE ACCESSIBLE BY ACCESS PANEL TO SHUT OFF DF-1.

211 N. Broadway  
Suite 1900  
St. Louis, MO 63102  
(314) 241-8188  
FAX (314) 241-0125



**LEWIS AND CLARK MEMORIAL TOWER**  
**VILLAGE OF HARTFORD, ILLINOIS**  
HARTFORD, ILLINOIS 62049

SHEET TITLE  
**FIRST FLOOR PLAN-  
PLUMBING**

REV. NO.	REMARKS	DATE

KENNEDY PROJECT NO  
KAI# 10-02048

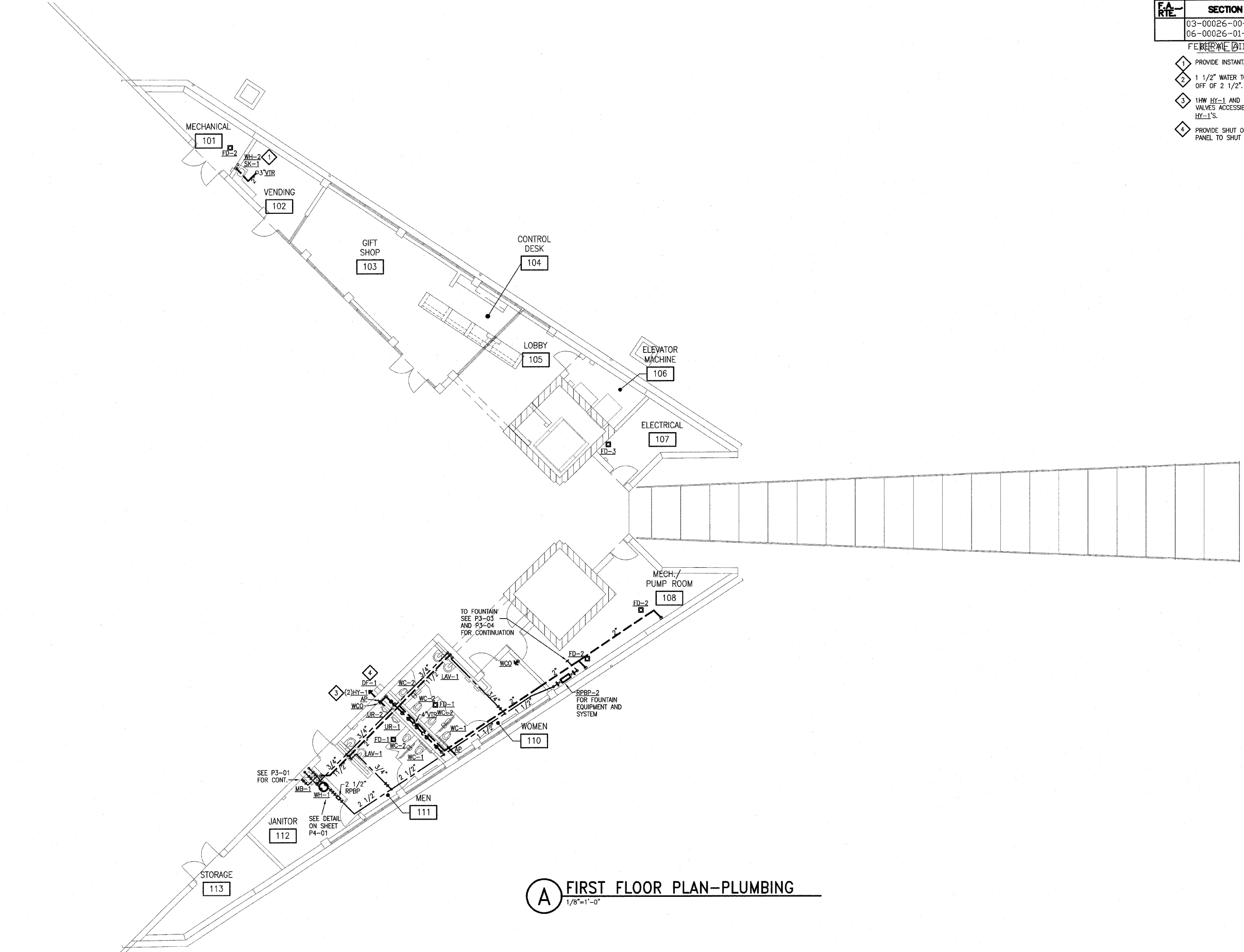
ISSUE DATE  
12-JULY-05

SHEET NO

**P3-02**

© 2005 KENNEDY ASSOCIATES INCORPORATED

U:\10-02048\CAD\PHASE-2\03\PHASE2\PA3-02.DWG | 7/11/2005 1:16:34 PM | Xref's: BS-PLAN-2A TB2A36CDL | Images: none



**A FIRST FLOOR PLAN-PLUMBING**  
1/8"=1'-0"