

F.A. RTE.	SECTION	COUNTY	TOTAL SHEETS	SHEET NO.
	03-00026-00-PK	MADISON	51	44
	06-00026-01-MS	97331		

FEDERAL AID PROJECT

211 N. Broadway
 Suite 1900
 St. Louis, MO 63102
 (314) 241-8188
 FAX (314) 241-0125

KAI

LEWIS AND CLARK MEMORIAL TOWER
VILLAGE OF HARTFORD, ILLINOIS
 HARTFORD, ILLINOIS 62049

SHEET TITLE:
LANDING ELECTRICAL PLANS

REV. NO.	REMARKS	DATE

KENNEDY PROJECT NO
KAI# 10-02048

ISSUE DATE
12-JULY-05

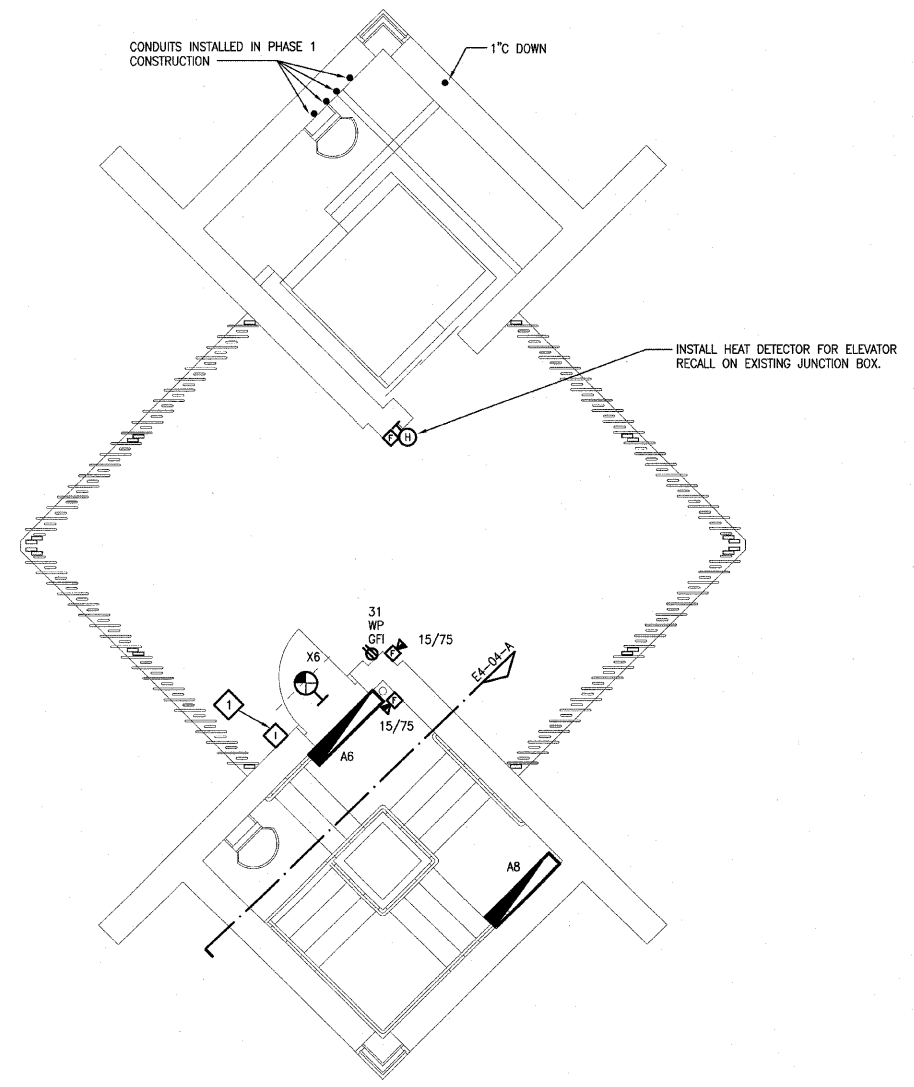
SHEET NO

E4-03

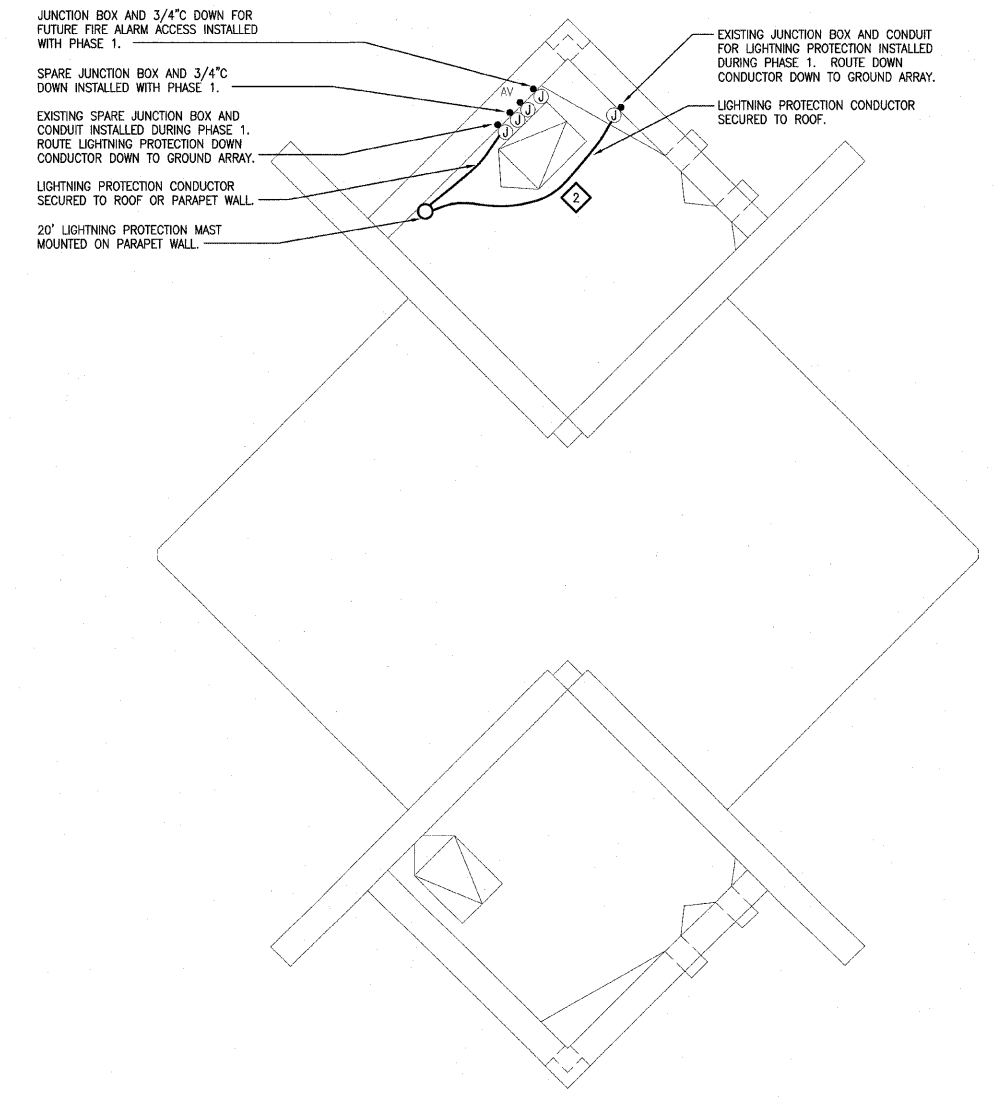
©2005 KENNEDY ASSOCIATES INCORPORATED

KEYED NOTES

- 1 E.C. SHALL FURNISH AND INSTALL ALPHON LE-DA OUTDOOR WEATHERPROOF INTERCOM STATION WITHIN EXISTING ROUGH-IN INSTALLED DURING PHASE 1 CONSTRUCTION.
- 2 SEE DETAILS F AND G ON SHEET E6-01.



D THIRD LANDING ELECTRICAL PLAN
 1/4"=1'-0"



C ROOF LANDING ELECTRICAL PLAN
 1/4"=1'-0"

