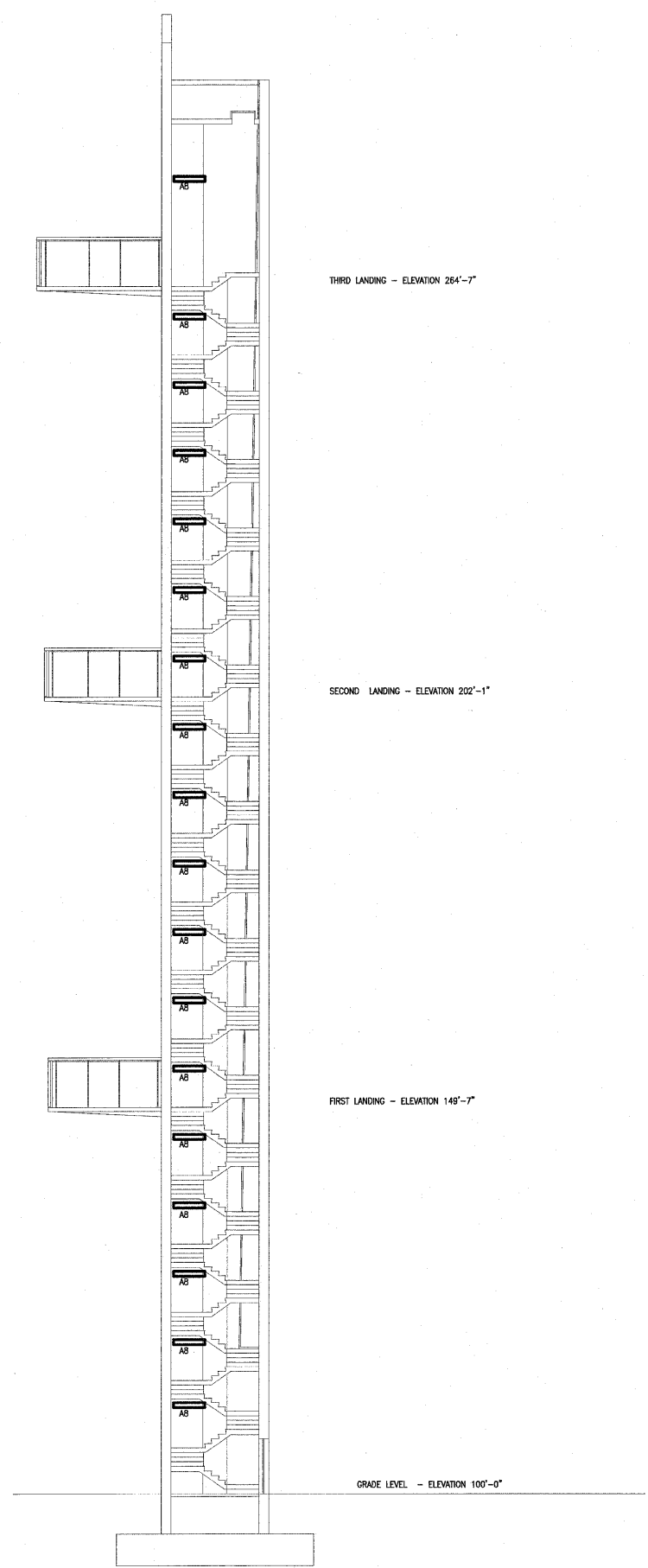
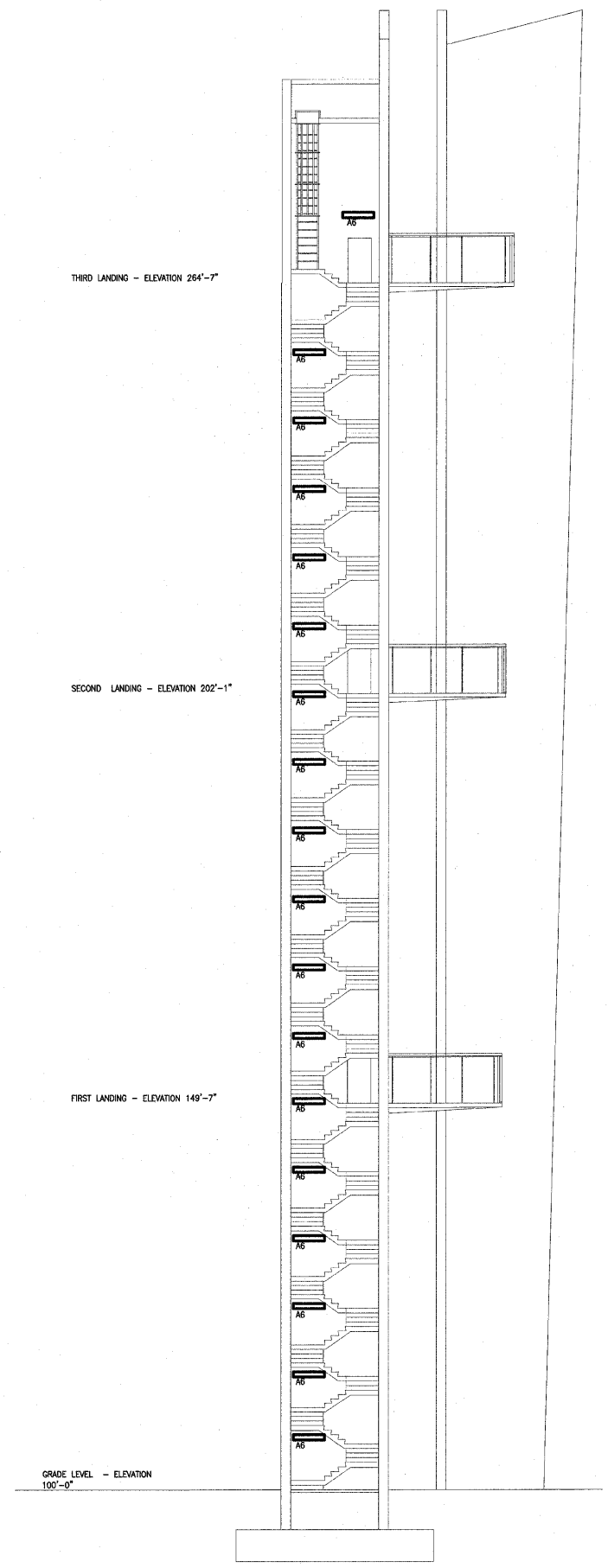


F.A. RTE.	SECTION	COUNTY	TOTAL SHEETS	SHEET NO.
	03-00026-00-PK 06-00026-01-MS	MADISON ꠆ꠇꠋꠌ	51	45
FEDERAL AID PROJECT				



**A** SECTION  
NOT TO SCALE



**B** SECTION  
NOT TO SCALE

**NOTE:**  
THIS SHEET IS NOT DRAWN TO SCALE, IT IS INTENDED TO SHOW QUANTITIES AND LOCATIONS ONLY.

211 N. Broadway  
Suite 1900  
St. Louis, MO 63102  
(314) 241-8188  
FAX (314) 241-0125



**LEWIS AND CLARK MEMORIAL TOWER**  
**VILLAGE OF HARTFORD, ILLINOIS**  
HARTFORD, ILLINOIS 62049

SHEET TITLE:  
**ELECTRICAL SECTIONS**

REV. NO.	REMARKS	DATE

KENNEDY PROJECT NO  
KAI# 10-02048

ISSUE DATE  
12-JULY-05

SHEET NO

**E4-04**