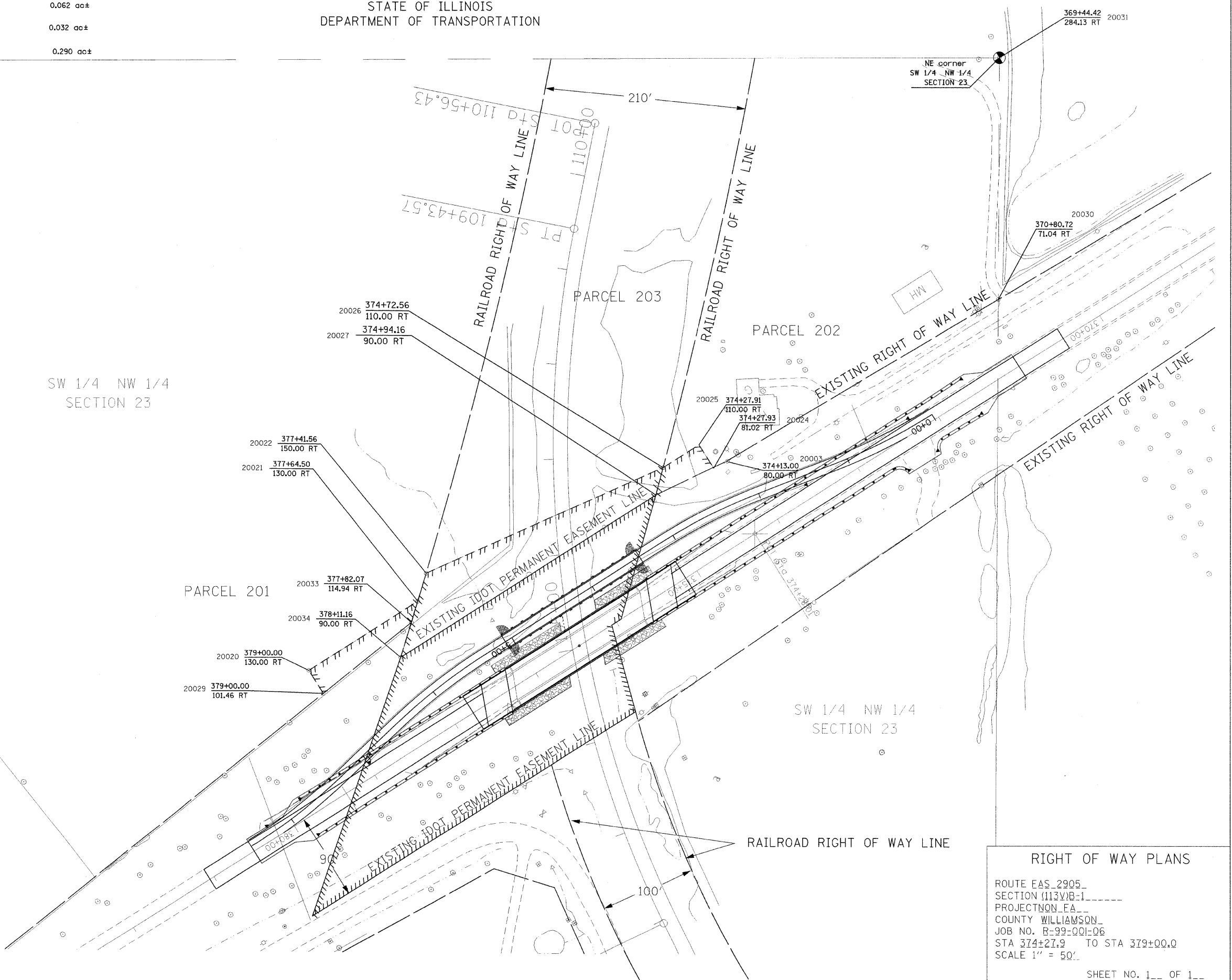


PARCEL NO.	NAME	ROW	TE
201	DONALD D. GANSKE	0.062 ac±	
202	JAMES & ANDREA MIDGETT	0.032 ac±	
203	BURLINGTON NORTHERN	0.290 ac±	

STATE OF ILLINOIS
DEPARTMENT OF TRANSPORTATION



- COORDINATE LIST
- Pt 20003 N 353383.5271 E 802230.6422
 - Pt 20020 N 353165.3335 E 801792.4816
 - Pt 20021 N 353237.8031 E 801906.9691
 - Pt 20022 N 353266.9752 E 801915.6611
 - Pt 20024 N 353376.3909 E 802217.4833
 - Pt 20025 N 353400.8754 E 802201.9848
 - Pt 20026 N 353377.0468 E 802164.3404
 - Pt 20027 N 353348.5962 E 802156.7880
 - Pt 20029 N 353141.2199 E 801807.7453
 - Pt 20030 N 353553.9501 E 802516.0290
 - Pt 20031 N 353806.8973 E 802516.9910
 - Pt 20033 N 353215.6811 E 801900.1877
 - Pt 20034 N 353179.0537 E 801888.9446



SW 1/4 NW 1/4
SECTION 23

SW 1/4 NW 1/4
SECTION 23

RIGHT OF WAY PLANS

ROUTE EAS_2905_

SECTION (113V)B-1

PROJECTNON_EA_

COUNTY WILLIAMSON_

JOB NO. R-99-001-06

STA 374+27.9 TO STA 379+00.0

SCALE 1" = 50'

SHEET NO. 1 OF 1