

F.A.S. RTE.	SECTION	COUNTY	TOTAL SHEETS	SHEET NO.
2905	113B-1	WILLIAMSON	87	32
STA. TO STA.		ILLINOIS FED. AID PROJECT		
FED. ROAD DIST. NO. 7		CONTRACT 98777		

SHEET 1 OF 18

BENCHMARK

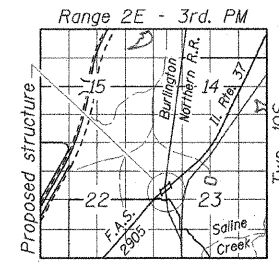
Square cut in S.E. wingwall of S.N. 100-0027, Elev. 540.51

EXISTING STRUCTURE

S.N. 100-0027 built in 1940 as S.B.I. Rt. 147, Sec. 113VBF at Sta. 376+46.87 as a 3-span WF structure 161'-6" Bk.- Bk. Abutments, supported on spread footings. Nearest mile post #324 is 2433 ft. southeast of \odot structure.

PROPOSED STRUCTURE

Existing bridge to be removed and replaced with a three span wide flange beam and concrete deck bridge on integral abutments and concrete encased pile bent piers. Traffic to be maintained utilizing temporary runaround. No Salvage



LOCATION SKETCH

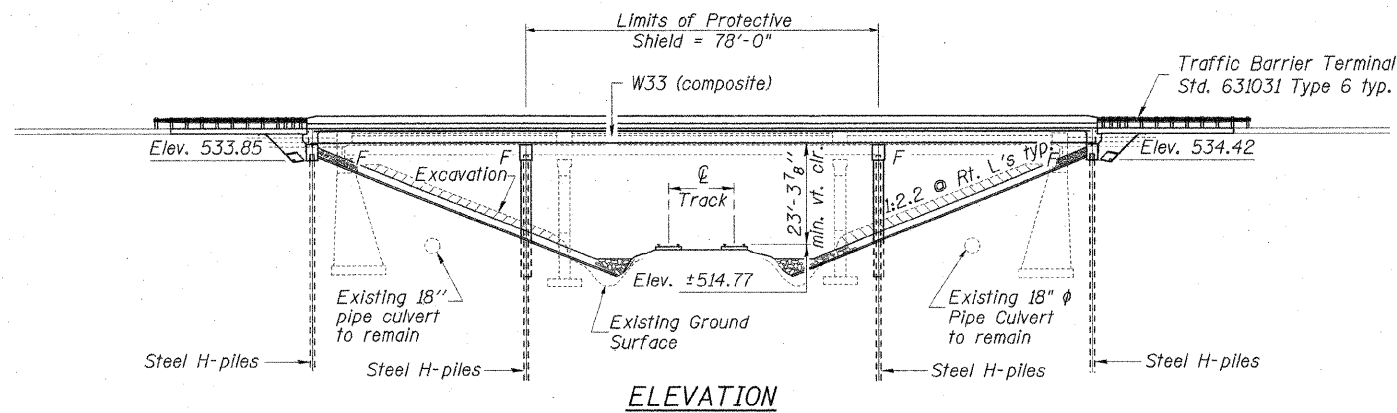
STATION 376+46.00
BUILT 200_ BY
STATE OF ILLINOIS
F.A.S. RT 2905 SEC. 113B-1
LOADING HL-93
STR. NO. 100-0090

NAME PLATE

See Std. 515001

INDEX OF SHEETS

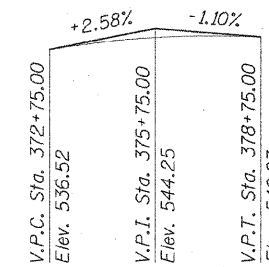
SHEET NO.	TITLE
1.	General Plan
2.	Notes and Bill of Material
3.	Deck Elevations 1
4.	Deck Elevations 2
5.	Approach Pavement Elevations
6.	Superstructure
7.	Parapet Details
8.	Abutment Diaphragm Details
9.	Framing Plan & Elevation
10.	Framing Details & Tables
11.	East Abutment
12.	West Abutment
13.	Pier 1
14.	Pier 2
15.	Bar Splicer Assembly Details
16.	Steel H-Pile Details
17.	Boring Logs 1
18.	Boring Logs 2



ELEVATION

BORING DATA

Boring No.	Station	Offset
1-S	375+38	11' Lt.
2-S	376+09	10' Rt.
3-S	376+85	9' Lt.
4-S	377+56	12' Rt.



PROFILE GRADE

(along \odot roadway)

LOADING HL-93
Allow 50#/sq. ft. for future wearing surface.

DESIGN SPECIFICATIONS
AASHTO LRFD Bridge Design Specifications
US, 3rd. Edition-2004 w/2005 Interims

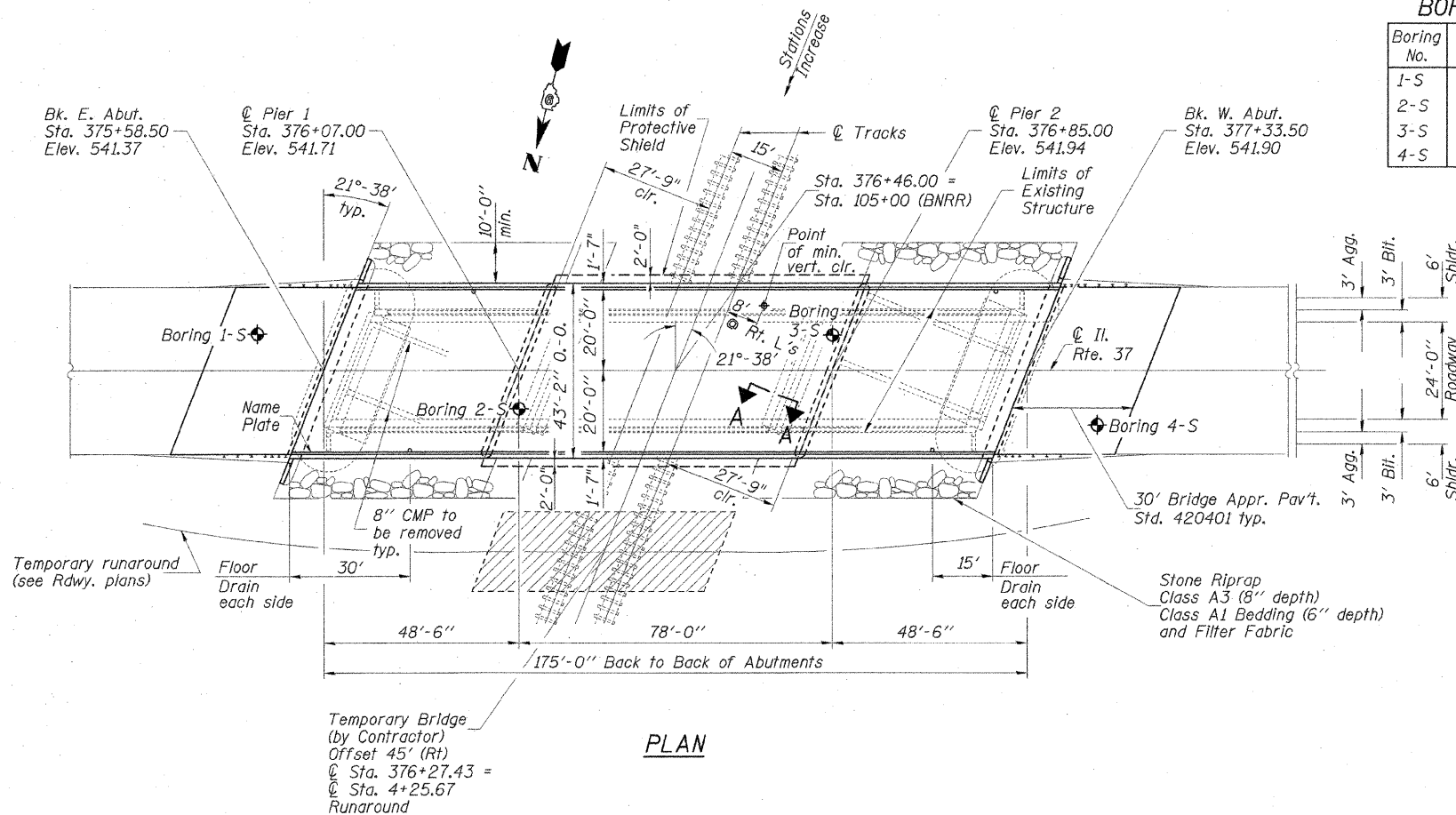
DESIGN STRESSES

FIELD UNITS

$f_c = 3,500$ psi
 $f_y = 60,000$ psi (reinforcement)
 $f_y = 50,000$ psi (structural steel)

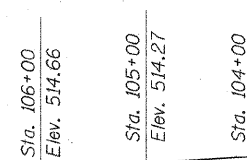
SEISMIC DATA

Seismic Performance Zone (SPZ) = 2
Bedrock Acceleration Coefficient (A) = 0.13g
Site Coefficient (S) = 1.5

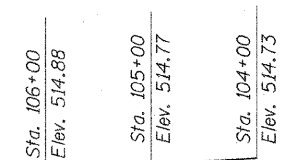


PLAN

TOP OF EAST RAIL ELEVATION

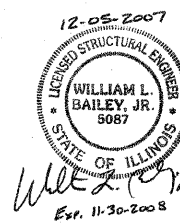


TOP OF WEST RAIL ELEVATION



APPROVED
FOR STRUCTURAL ADEQUACY ONLY

Ralph E. Anderson
ENGINEER OF BRIDGES AND STRUCTURES



NOTES:

1. See Sheet 2 of 18 for Section A-A.

REVISIONS	
NAME	DATE

ILLINOIS DEPARTMENT OF TRANSPORTATION
GENERAL PLAN
F.A.S. ROUTE 2905 (IL. RTE. 37)
ILLINOIS ROUTE 37 OVER
BN/SF RAILROAD
SECTION 113B-1 STA. 376+46.00
STR. NO. 100-0090 - WILLIAMSON COUNTY
SCALE: NONE DRAWN BY: GLD
DATE: 12/14/07 CHECKED BY: WLB

CMT
CRAWFORD MURPHY & TILLY, INC.
CONSULTING ENGINEERS
SPRINGFIELD, IL ■ AURORA, IL ■ ST. LOUIS, MO
ROCKFORD, IL ■ PEORIA, IL ■ CHICAGO, IL