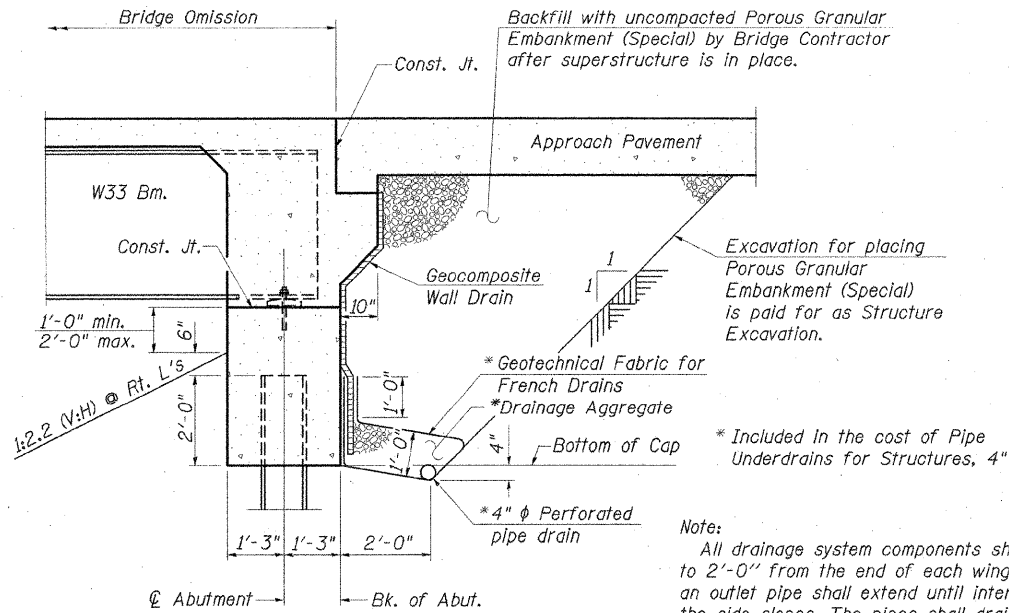
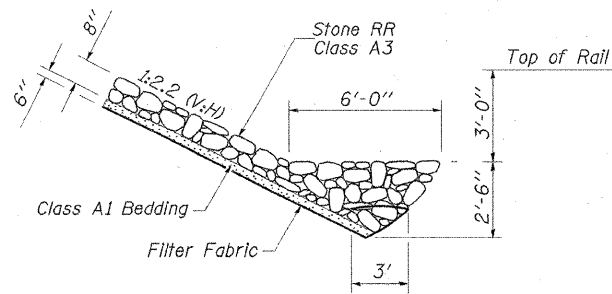


### GENERAL NOTES

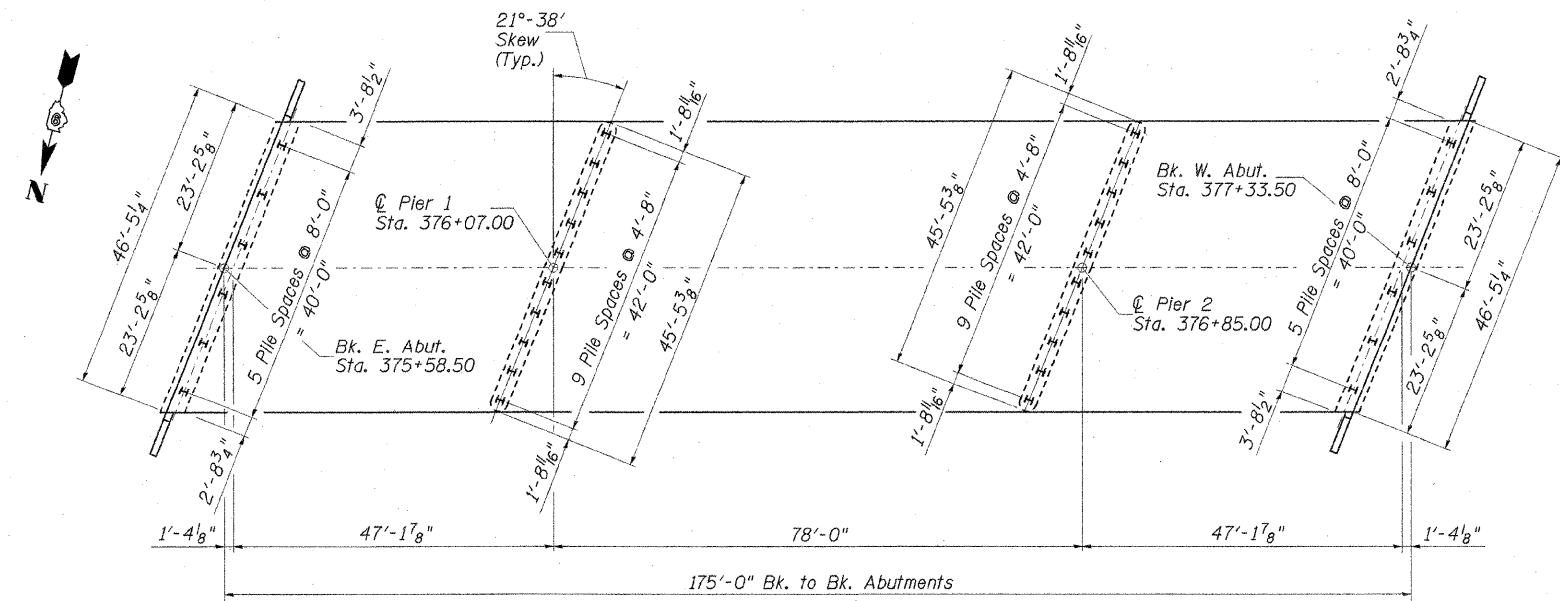
- Fasteners shall be AASHTO M164 Type 1, mechanically galvanized bolts. Bolts  $\frac{7}{8}$  in.  $\phi$ , holes  $\frac{15}{16}$  in.  $\phi$ , unless otherwise noted.
- Calculated weight of Structural Steel = 143,820 (AASHTO M270 Grade 50)  
14,920 (AASHTO M270 Grade 36)
- No field welding is permitted except as specified in the contract documents.
- Reinforcement bars shall conform to the requirements of ASTM A 706 Gr 60 (IL Modified). See Special Provisions.
- Reinforcement bars designated (E) shall be epoxy coated.
- Bearing seat surfaces shall be constructed or adjusted to their designated elevations within a tolerance of  $\frac{1}{8}$  inch (0.01 ft.). Adjustment shall be made either by grinding the surface or by shimming the bearings.
- The existing structural steel coating contains lead. The Contractor shall take appropriate precautions to deal with the presence of lead on this project.
- The Inorganic Zinc Rich Primer / Acrylic / Acrylic Paint System shall be used for shop and field painting of new structural steel except where otherwise noted. The color of the final finish coat for all interior steel surfaces shall be gray, Munsell No. 5B 7/1. The color of the final finish coat for the exterior and bottom flange of the fascia beams shall be Interstate Green, Munsell No. 7.5G 4/8. See Special Provision for "Cleaning and Painting New Metal Structures".
- The Contractor shall drive test piles to 110% of the nominal required bearing specified in production locations at substructures specified or approved by the Engineer before ordering the remainder of piles.
- Slipforming of parapets shall not be permitted.



**SECTION THRU INTEGRAL ABUTMENT**  
(Horiz. dim. @ Rt. L's)



**SECTION A-A**



**FOOTING LAYOUT**

### TOTAL BILL OF MATERIAL

ITEM	UNIT	SUPER	SUB	TOTAL
Porous Granular Embankment (Special)	Cu. Yd.		144	144
Stone Riprap, Class A3	Sq. Yd.		1202	1202
Filter Fabric	Sq. Yd.		1174	1174
Removal of Existing Structures	Each			1
Protective Shield	Sq. Yd.	409		409
Structure Excavation	Cu. Yd.		644	644
Floor Drains	Each	4		4
Concrete Structures	Cu. Yd.		268.3	268.3
Concrete Superstructure	Cu. Yd.	258.8		258.8
Concrete Encasement	Cu. Yd.		11.2	11.2
Bridge Deck Grooving	Sq. Yd.	1124		1124
Protective Coat	Sq. Yd.	925		925
Furnishing and Erecting Structural Steel	L. Sum	0.5		0.5
Stud Shear Connectors	Each	3780		3780
Reinforcement Bars, Epoxy Coated	Pound	67,970	26,180	94,150
Furnishing Steel Piles HP 10x42	Foot		393	393
Furnishing Steel Piles HP 12x63	Foot		658	658
Driving Piles	Foot		1051	1051
Test Pile Steel HP 10x42	Each		2	2
Test Pile Steel HP 12x63	Each		2	2
Pile Shoes	Each		32	32
Temporary Bridge Complete	Each			1
Name Plates	Each	1		1
Anchor Bolts, 1"	Each	48		48
Geocomposite Wall Drain	Sq. Yd.		79	79
Pipe Underdrains for Structures, 4"	Foot		153	153
Bar Splicers	Each	82		82

REVISIONS	
NAME	DATE

ILLINOIS DEPARTMENT OF TRANSPORTATION  
**NOTES AND BILL OF MATERIAL**  
 F.A.S. ROUTE 2905 (IL. RTE. 37)  
 ILLINOIS ROUTE 37 OVER  
 BN/SF RAILROAD  
 SECTION 113B-1 STA. 376+46.00  
 STR. NO. 100-0090 - WILLIAMSON COUNTY  
 SCALE: NONE DRAWN BY: GLD  
 DATE: 12/14/07 CHECKED BY: WLB

**CMT**  
 CRAWFORD MURPHY & TILLY, INC.  
 CONSULTING ENGINEERS  
 SPRINGFIELD, IL ■ AURORA, IL ■ ST. LOUIS, MO  
 ROCKFORD, IL ■ PEORIA, IL ■ CHICAGO, IL

I:\DDT\066660\SNL\000090\dr-01\sheet\NOTES-BILL.dgn  
 12/16/2007