

SOUTH CURB LINE

LOCATION	STATION	OFFSET	THEORETICAL GRADE ELEVATION
End E. Appr. Pav't.	375+36.60	-20.417	540.808
A	375+46.60	-20.417	540.902
B	375+56.60	-20.417	540.991
Bk. E. Abut.	375+66.60	-20.417	541.073

SOUTH EDGE OF PAVEMENT

LOCATION	STATION	OFFSET	THEORETICAL GRADE ELEVATION
End E. Appr. Pav't.	375+33.26	-12.000	540.950
A	375+43.26	-12.000	541.047
B	375+53.26	-12.000	541.137
Bk. E. Abut.	375+63.26	-12.000	541.221

ROADWAY & P.G.L.

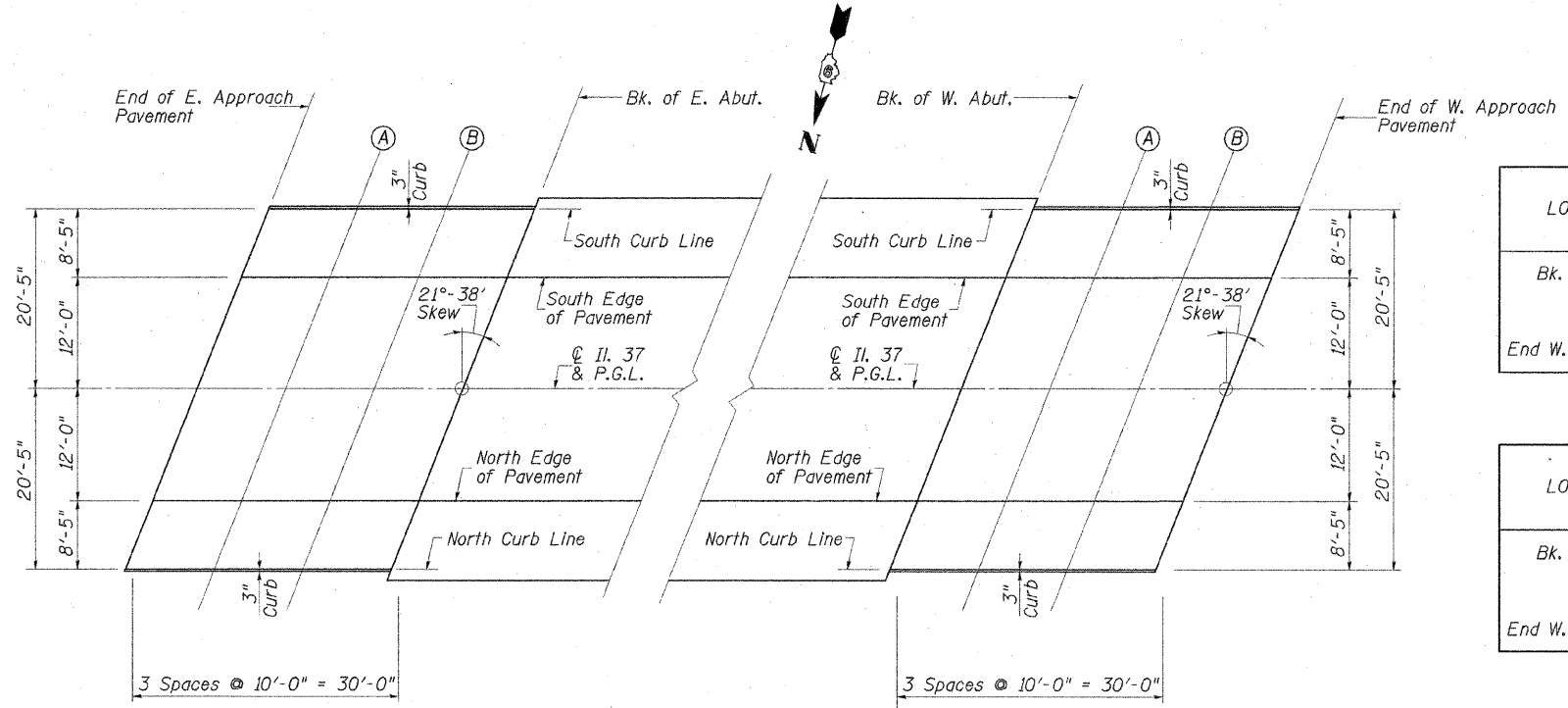
LOCATION	STATION	OFFSET	THEORETICAL GRADE ELEVATION
End E. Appr. Pav't.	375+28.50	0.000	541.090
A	375+38.50	0.000	541.189
B	375+48.50	0.000	541.282
Bk. E. Abut.	375+58.50	0.000	541.370

NORTH EDGE OF PAVEMENT

LOCATION	STATION	OFFSET	THEORETICAL GRADE ELEVATION
End E. Appr. Pav't.	375+23.74	+12.000	540.853
A	375+33.74	+12.000	540.955
B	375+43.74	+12.000	541.051
Bk. E. Abut.	375+53.74	+12.000	541.141

NORTH CURB LINE

LOCATION	STATION	OFFSET	THEORETICAL GRADE ELEVATION
End E. Appr. Pav't.	375+20.40	+20.417	540.642
A	375+30.40	+20.417	540.746
B	375+40.40	+20.417	540.844
Bk. E. Abut.	375+50.40	+20.417	540.937



LAYOUT PLAN EAST APPROACH PAVEMENT

LAYOUT PLAN WEST APPROACH PAVEMENT

SOUTH CURB LINE

LOCATION	STATION	OFFSET	THEORETICAL GRADE ELEVATION
Bk. W. Abut.	377+41.60	-20.417	541.519
A	377+51.60	-20.417	541.488
B	377+61.60	-20.417	541.450
End W. Appr. Pav't.	377+71.60	-20.417	541.407

SOUTH EDGE OF PAVEMENT

LOCATION	STATION	OFFSET	THEORETICAL GRADE ELEVATION
Bk. W. Abut.	377+38.26	-12.000	541.703
A	377+48.26	-12.000	541.674
B	377+58.26	-12.000	541.639
End W. Appr. Pav't.	377+68.26	-12.000	541.597

ROADWAY & P.G.L.

LOCATION	STATION	OFFSET	THEORETICAL GRADE ELEVATION
Bk. W. Abut.	377+33.50	0.000	541.902
A	377+43.50	0.000	541.876
B	377+53.50	0.000	541.844
End W. Appr. Pav't.	377+63.50	0.000	541.805

NORTH EDGE OF PAVEMENT

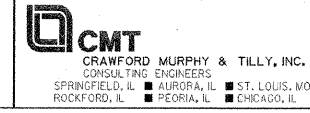
LOCATION	STATION	OFFSET	THEORETICAL GRADE ELEVATION
Bk. W. Abut.	377+28.74	+12.000	541.725
A	377+38.74	+12.000	541.702
B	377+48.74	+12.000	541.672
End W. Appr. Pav't.	377+58.74	+12.000	541.637

NORTH CURB LINE

LOCATION	STATION	OFFSET	THEORETICAL GRADE ELEVATION
Bk. W. Abut.	377+25.40	+20.417	541.556
A	377+35.40	+20.417	541.535
B	377+45.40	+20.417	541.508
End W. Appr. Pav't.	377+55.40	+20.417	541.474

REVISIONS	
NAME	DATE

ILLINOIS DEPARTMENT OF TRANSPORTATION
APPROACH PAVEMENT ELEVATIONS
 F.A.S. ROUTE 2905 (IL. RTE. 37)
 ILLINOIS ROUTE 37 OVER
 BN/SF RAILROAD
 SECTION 113B-1 STA. 376+46.00
 STR. NO. 100-0090 - WILLIAMSON COUNTY
 SCALE: NONE DRAWN BY: GLD
 DATE: 12/14/07 CHECKED BY: WLB



I:\DOT\060660\SNL\000000\Drawings\Approach Pavem Elev.dgn 12/15/2007