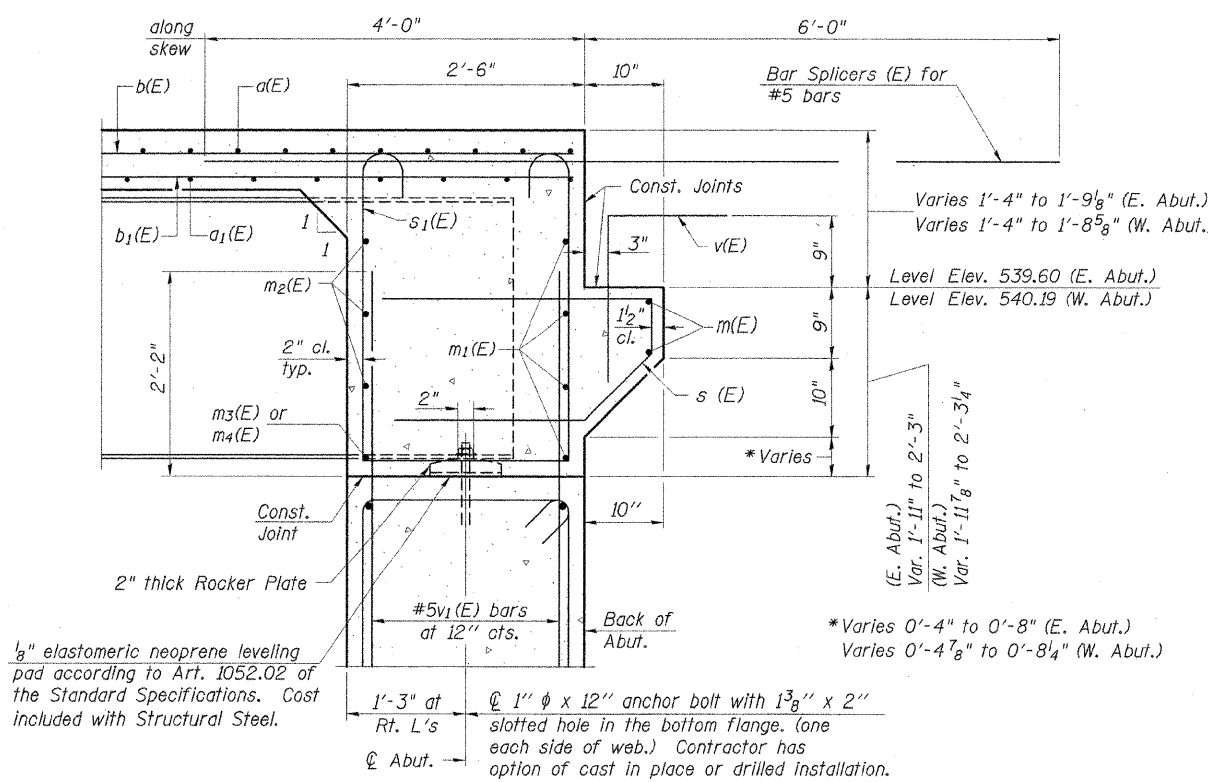


**DIAPHRAGM ELEVATION AT ABUTMENT**  
(Looking East at East Abut., West Abut. similar)



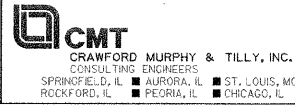
**SECTION A-A**  
Dimensions at right angles to abutment, except as shown.

**MIN. BAR LAP**  
#6 bar = 2'-9"

- NOTES:**
1. Reinforcement bars in diaphragm are billed with superstructure on Sheet 7 of 18.
  2. Concrete in diaphragm is included with Concrete Superstructure on Sheet 7 of 18.
  3. For details of bars s(E) & s1(E) see Sheet 7 of 18.
  4. The s(E) and s1(E) bars shall be placed parallel to the beams. Spacing for these bars shall be at right angles to the beams.
  5. For location of holes in web see Sheet 10 of 18.
  6. For bar splicer details see Sheet 15 of 18.

REVISIONS		DATE
NAME		

ILLINOIS DEPARTMENT OF TRANSPORTATION  
**ABUTMENT DIAPHRAGM DETAILS**  
F.A.S. ROUTE 2905 (IL. RTE. 37)  
ILLINOIS ROUTE 37 OVER  
BN/SF RAILROAD  
SECTION 113B-1 STA. 376+46.00  
STR. NO. 100-0090 - WILLIAMSON COUNTY  
SCALE: NONE DRAWN BY: GLD  
DATE: 12/14/07 CHECKED BY: WLB



L:\DOT\060666\1\SL\000090\draw\sheet8\ABUTMENT DETAILS.dgn 12/25/2007