

F.A.P. RTE.	SECTION	COUNTY	TOTAL SHEETS	SHEET NO.
726	113B-2	WILLIAMSON	87	53
FED. ROAD DIST. NO.	ILLINOIS	FED. AID PROJECT		

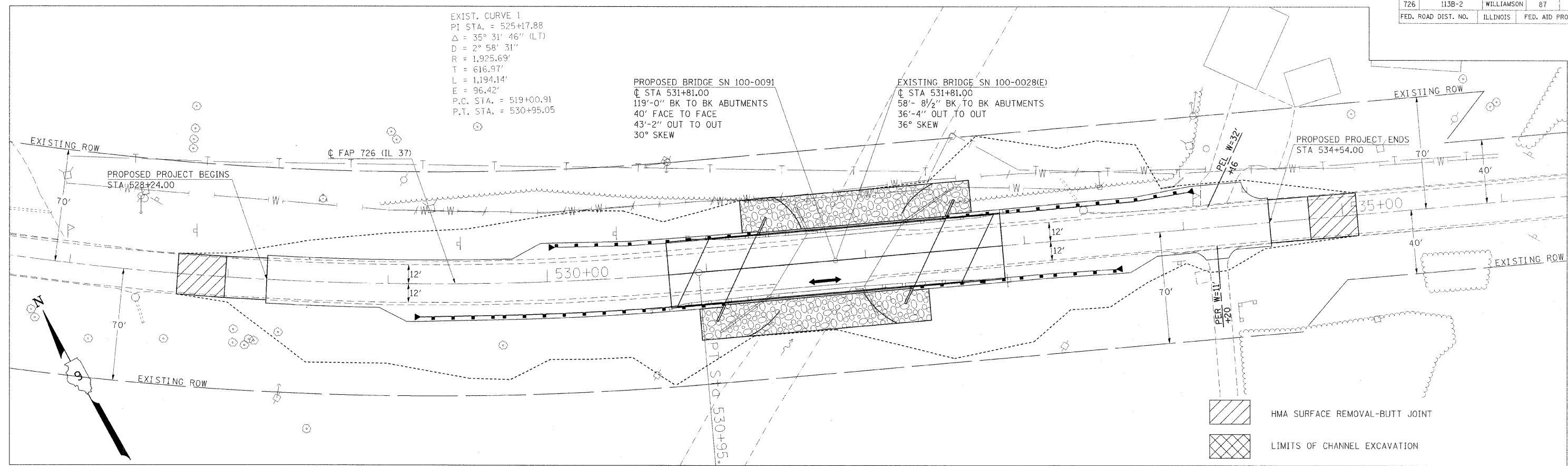
PLAN	SURVEYED	DATE
	BY	
	NO.	
	DATE	
	BY	
	NO.	
	DATE	
	BY	
	NO.	
	DATE	

PROFILE	REVIEWED	DATE
	BY	
	NO.	
	DATE	
	BY	
	NO.	
	DATE	
	BY	
	NO.	
	DATE	

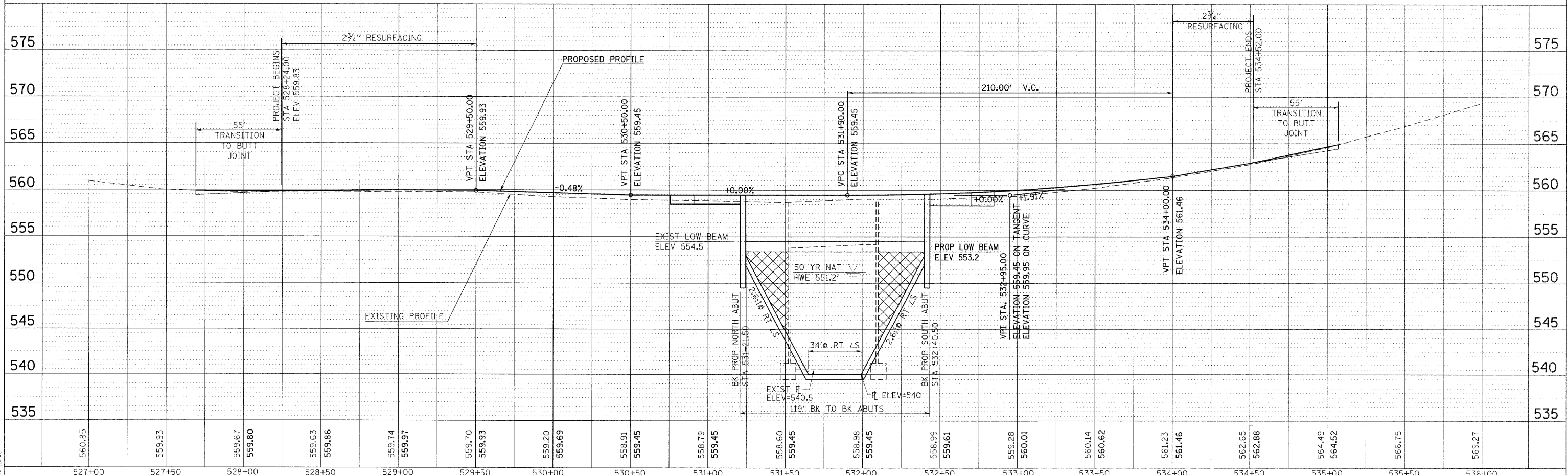
EXIST. CURVE 1
 P1 STA. = 525+17.88
 $\Delta = 35^\circ 31' 46''$ (LT)
 $D = 2^\circ 58' 31''$
 $R = 1,925.69'$
 $T = 616.97'$
 $L = 1,194.14'$
 $E = 96.42'$
 P.C. STA. = 519+00.91
 P.T. STA. = 530+95.05

PROPOSED BRIDGE SN 100-0091
 \bar{C} STA 531+81.00
 119'-0" BK TO BK ABUTMENTS
 40' FACE TO FACE
 43'-2" OUT TO OUT
 30° SKEW

EXISTING BRIDGE SN 100-0028(E)
 \bar{C} STA 531+81.00
 58'- 8 1/2" BK TO BK ABUTMENTS
 36'-4" OUT TO OUT
 36° SKEW



HMA SURFACE REMOVAL-BUTT JOINT
 LIMITS OF CHANNEL EXCAVATION



12/1/2007
 36/00000 7' IN.
 36/00000 7' IN.

PLANPROFILE - IL 37 OVER LITTLE SALINE CREEK