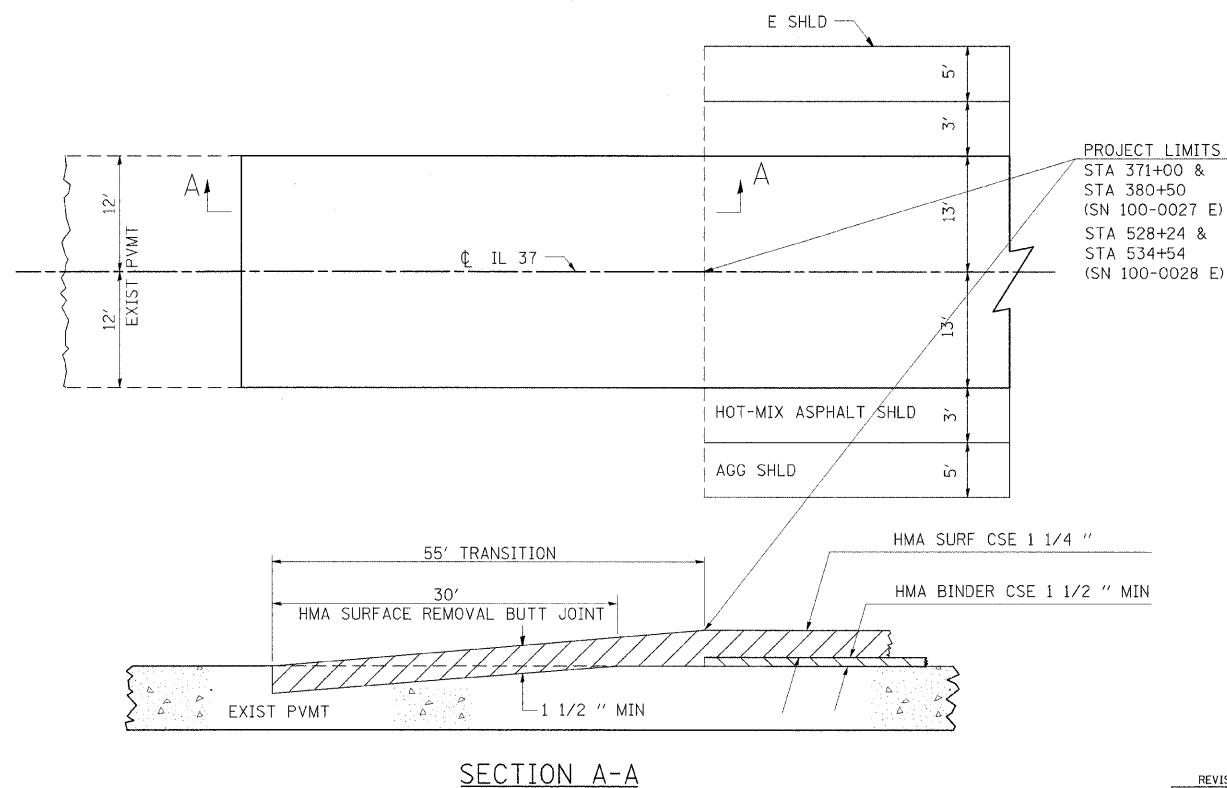


F.A.S. F.A.P. RTE.	SECTION	COUNTY	TOTAL SHEETS	SHEET NO
2905 726	113B-1, 113B-2	WILLIAMSON	87	66
STA.		TO STA.		
FED. ROAD DIST. NO.		ILLINOIS	FED. AID PROJECT	
CONTRACT NO. 98777				

BUTT JOINT



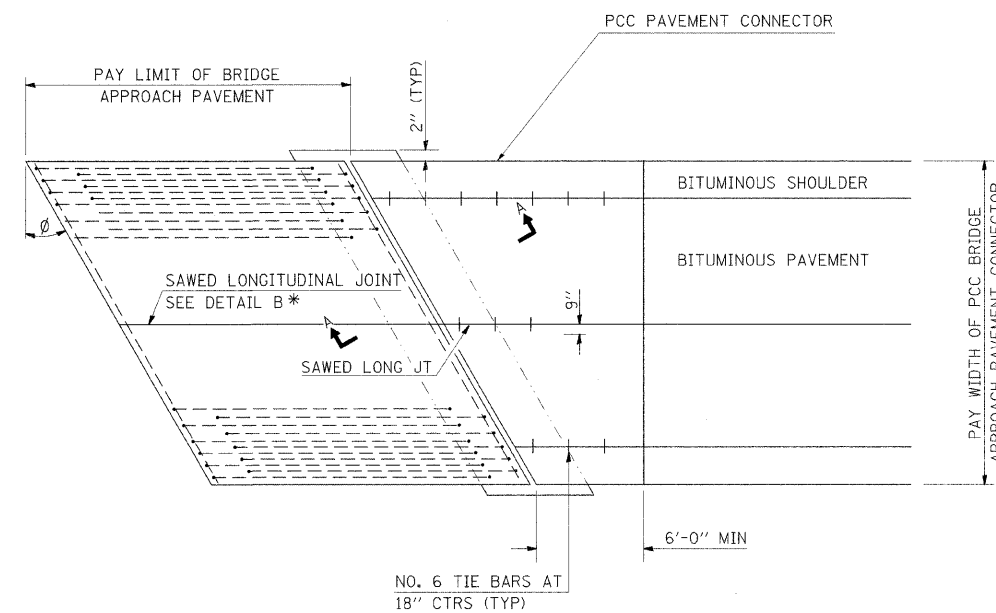
PROJECT LIMITS
 STA 371+00 &
 STA 380+50
 (SN 100-0027 E)
 STA 528+24 &
 STA 534+54
 (SN 100-0028 E)

REVISIONS

DRAWN	10-17-90
REVISED	01-11-07
REVISED	
REVISED	

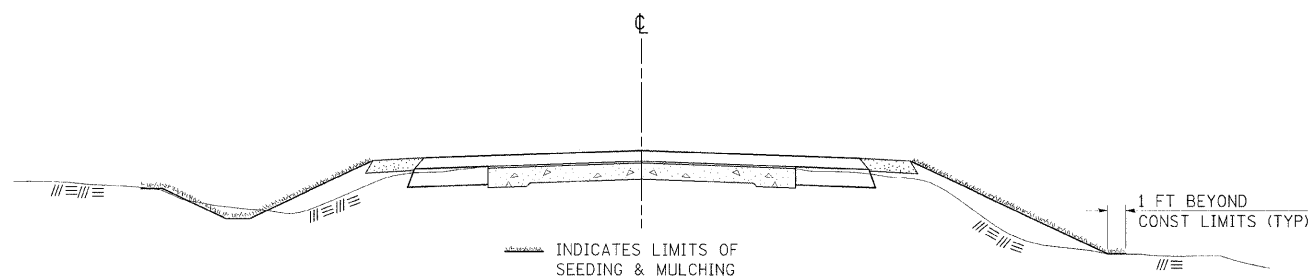
STD. 9-86

PCC PAVEMENT CONNECTOR



BRIDGE APPROACH PAVEMENT CONNECTOR (PCC) SPECIAL
 (MODIFICATION TO STD 420401)

SEEDING & MULCHING



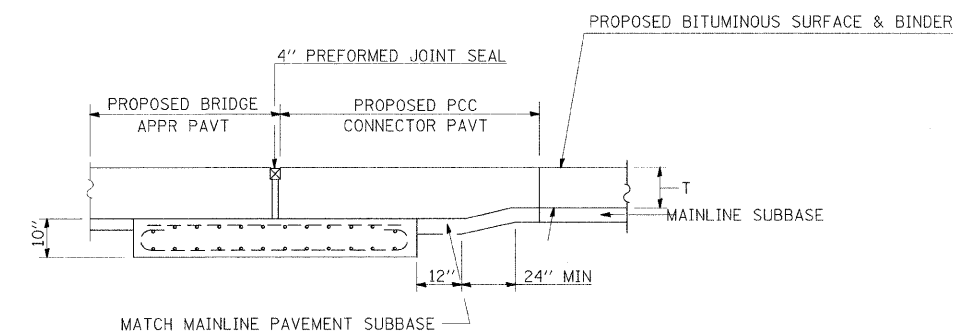
GENERAL NOTES

IN GENERAL, ALL EARTH SURFACES DISTURBED DURING CONSTRUCTION OPERATIONS SHALL BE SEEDED AND MULCHED UPON COMPLETION OF ALL GRADING OPERATIONS.

FERTILIZER NUTRIENTS AND LIMESTONE SHALL BE APPLIED TO ALL SEEDED AREAS.

THE RATES OF APPLICATION OF FERTILIZER, MULCH AND LIMESTONE SHALL BE AS SPECIFIED IN THE SPECIAL PROVISIONS.

SECTIONS 250 AND 251 OF THE STANDARD SPECIFICATIONS SHALL GOVERN THIS WORK EXCEPT AS SPECIFIED HEREIN OR AS NOTED IN THE SPECIAL PROVISIONS.



SECTION A-A

12/3/2007
 c:\p\projects\98777\98777.dwg
 500,0000 / IN
 holstebach